

水のうき
はらりや

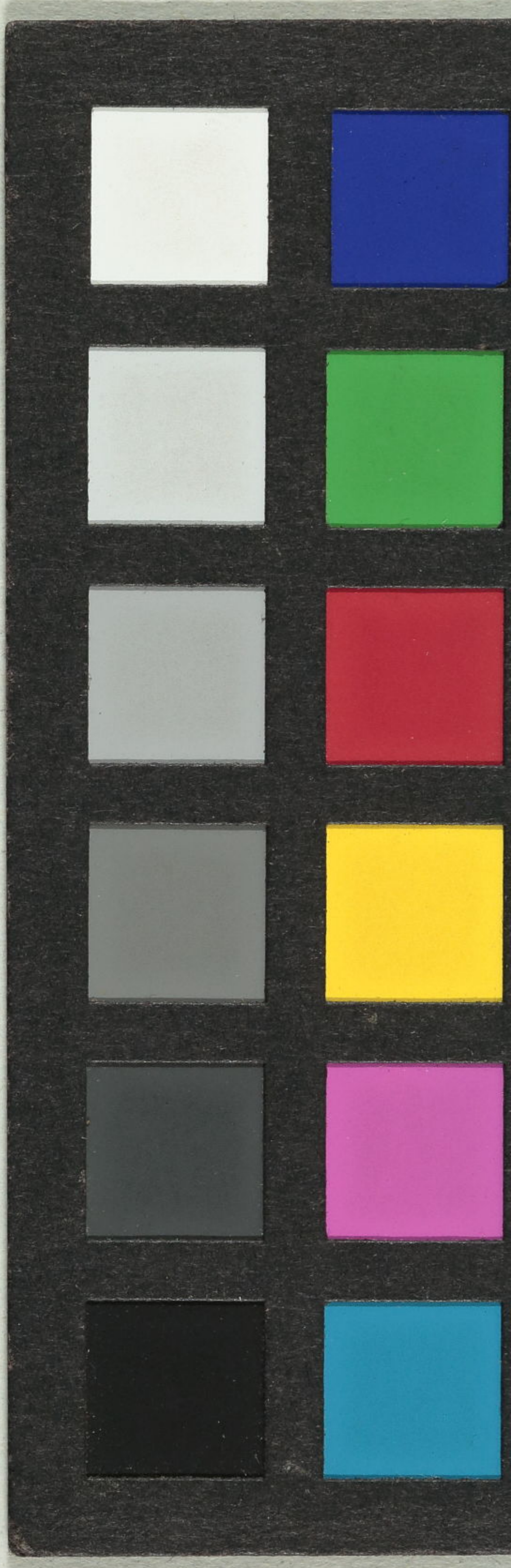
三羽の
一羽
夕
[Red Seal]

夕
[Red Seal]



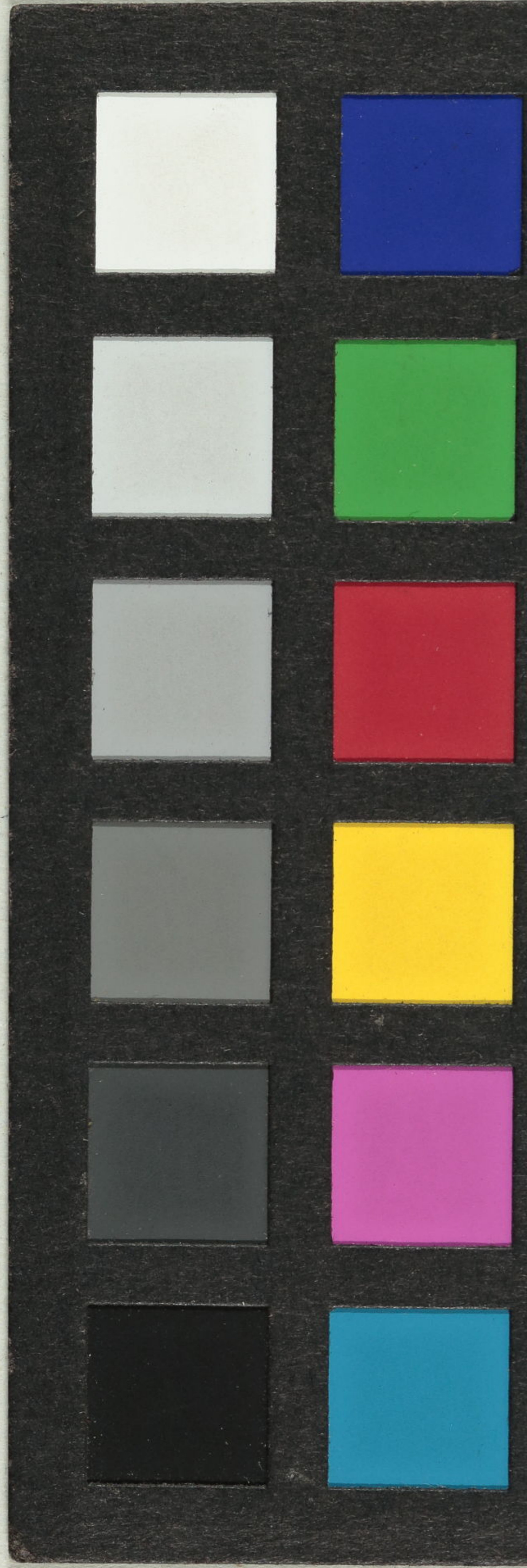


子





Handwritten calligraphy in black ink, consisting of several characters in a cursive style. The characters appear to be '子' (Shi) and '心' (Shin), which together mean 'heart' or 'mind'.





横井也省先生
踏馬俳句

昭和五二
一一二

