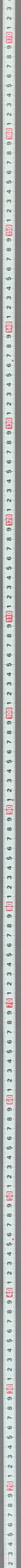
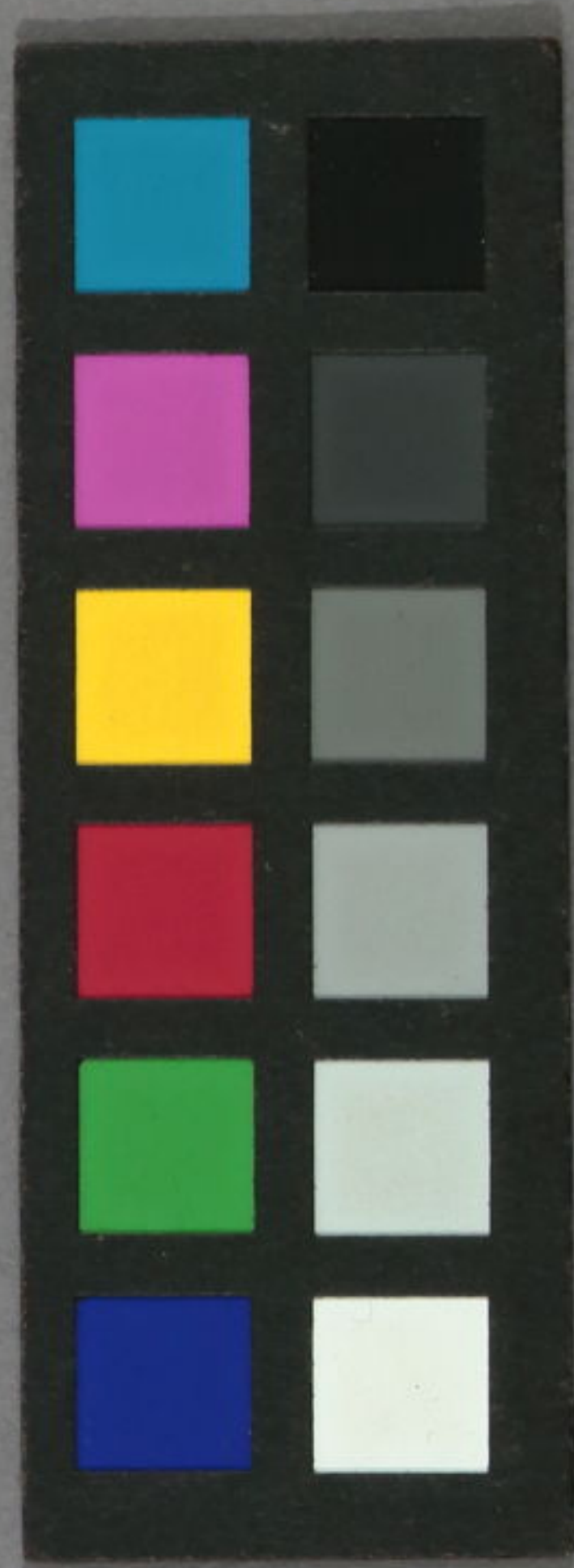
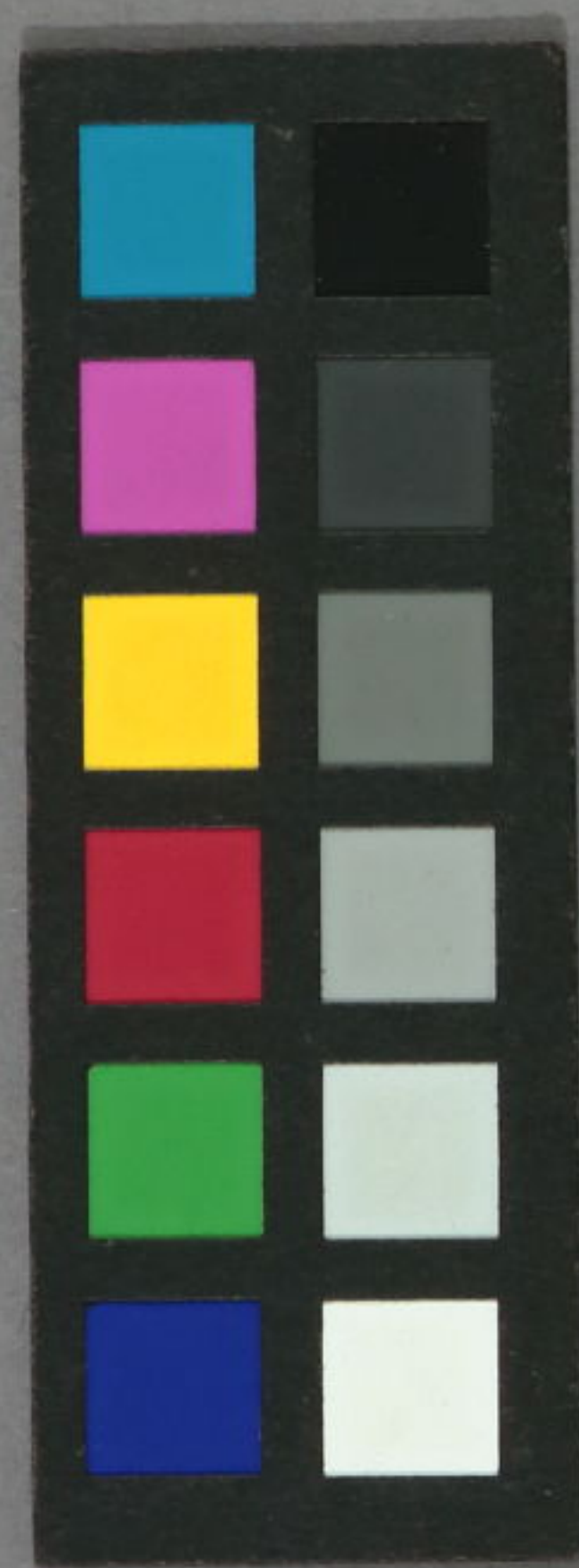


Handwritten Japanese calligraphy on a vertical slip of paper. The text is written in cursive (sōsho) style. The characters are: 金鶴堂 (Kinkurōdō) followed by a signature and a seal. At the top of the slip, there are two smaller characters: 清 (Shizune) and 之 (no particle).



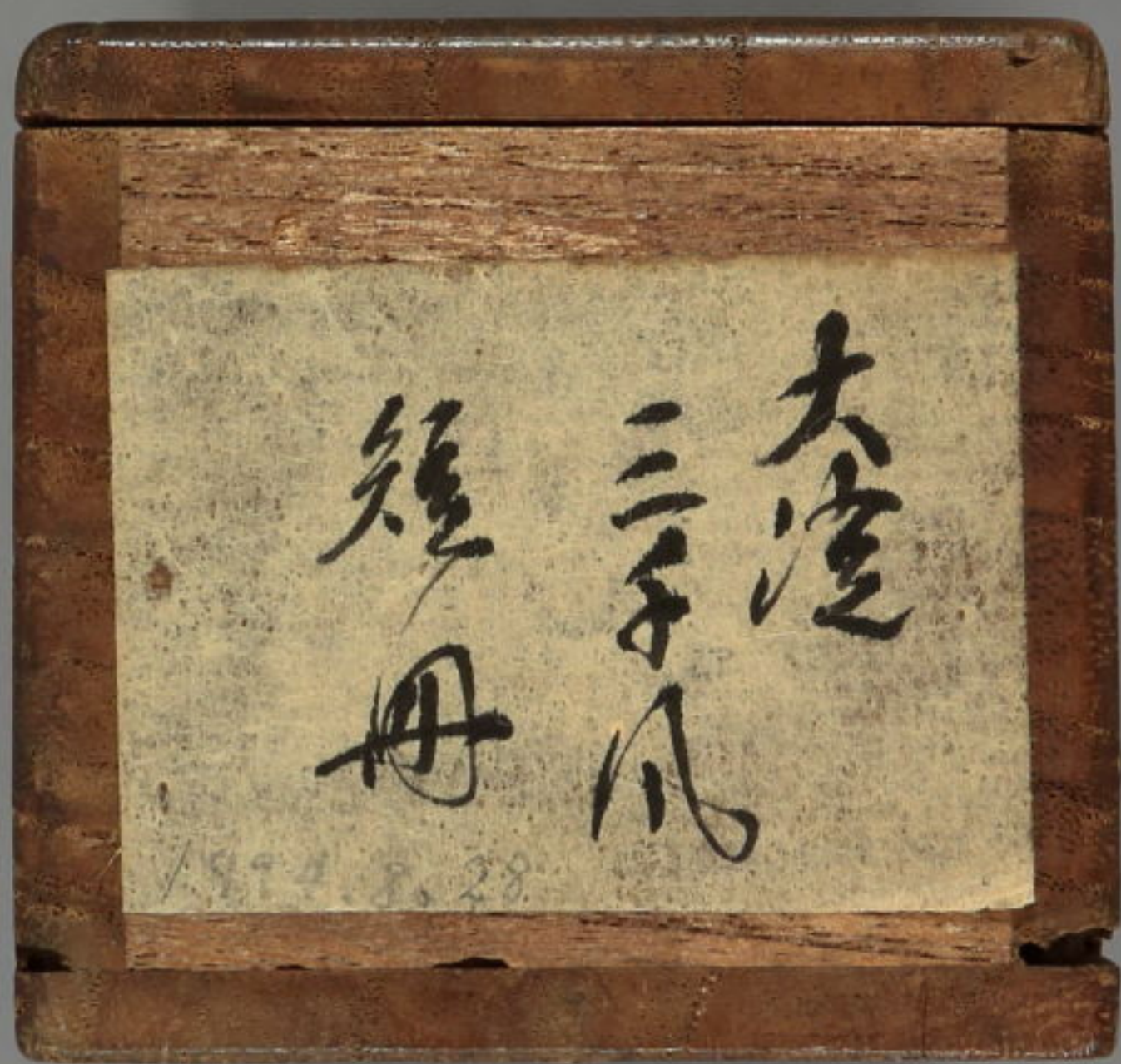






第四百九番





大造
三子
短冊

1874. 8. 28