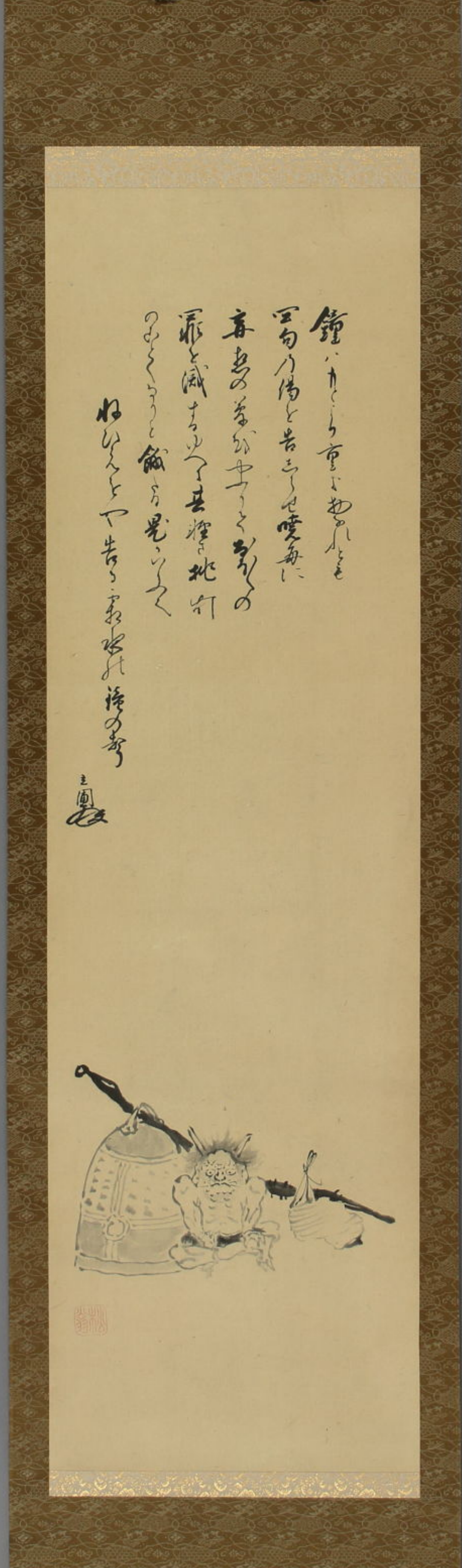


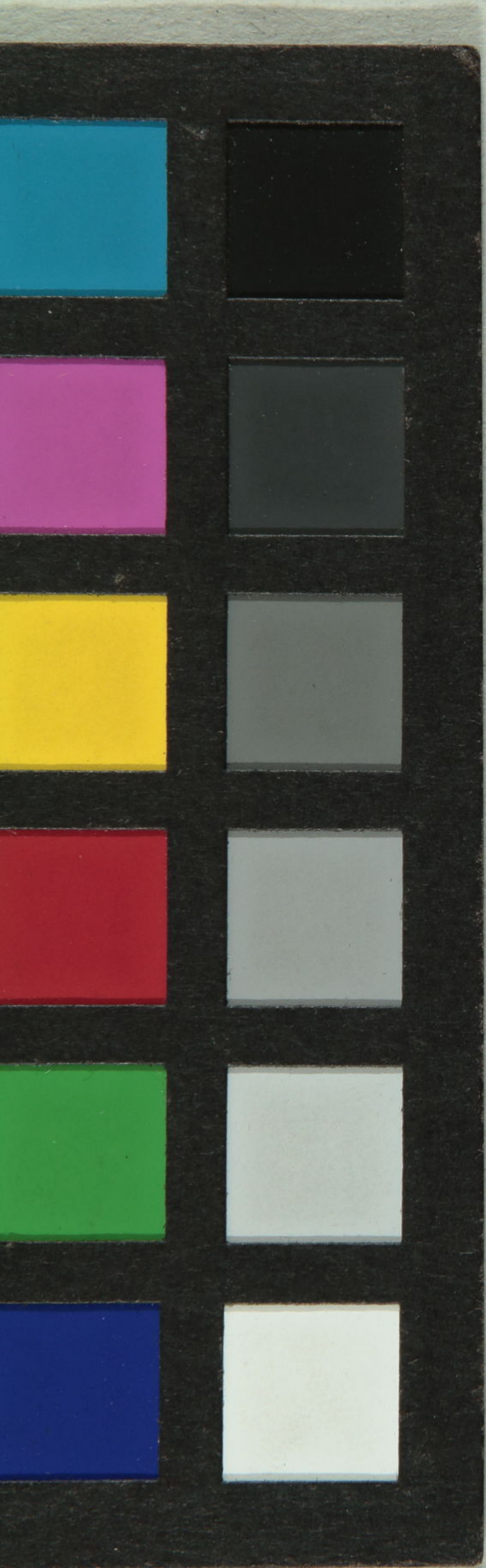
三圃

鐘はたけりて首は物しるも
回向の場を告ぐるは愛毎に
真実の善外中へくちの
罪と滅するはく其輝の地打
のひらきとて敵を是くく
ねひらきとて告ぐるおそれ後の事

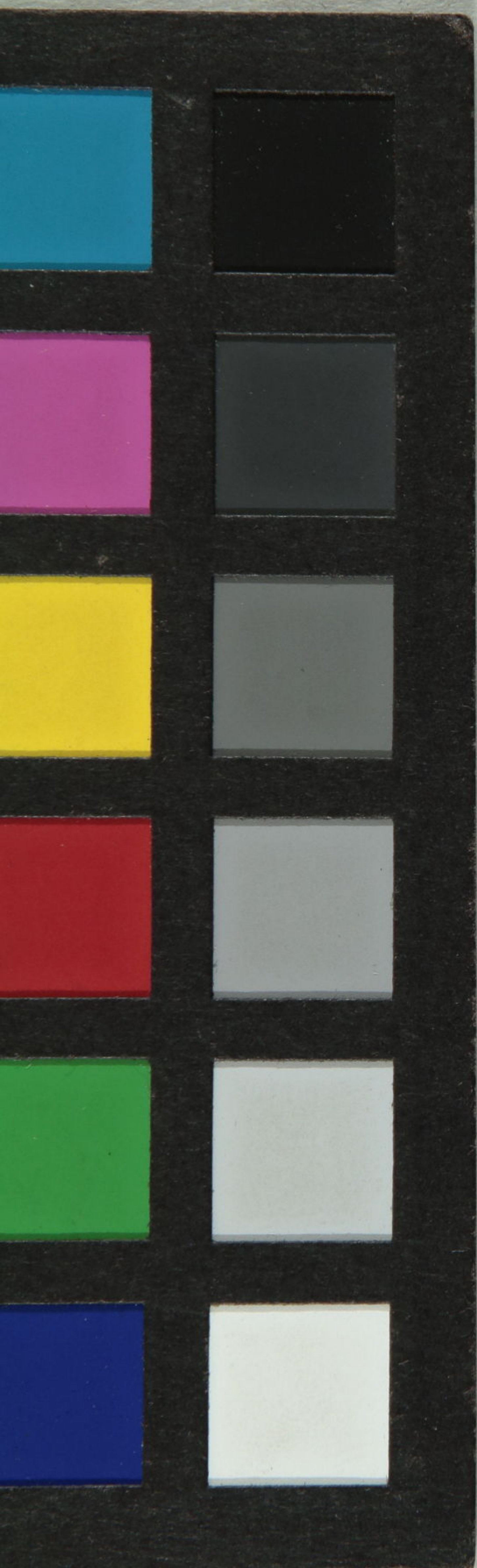


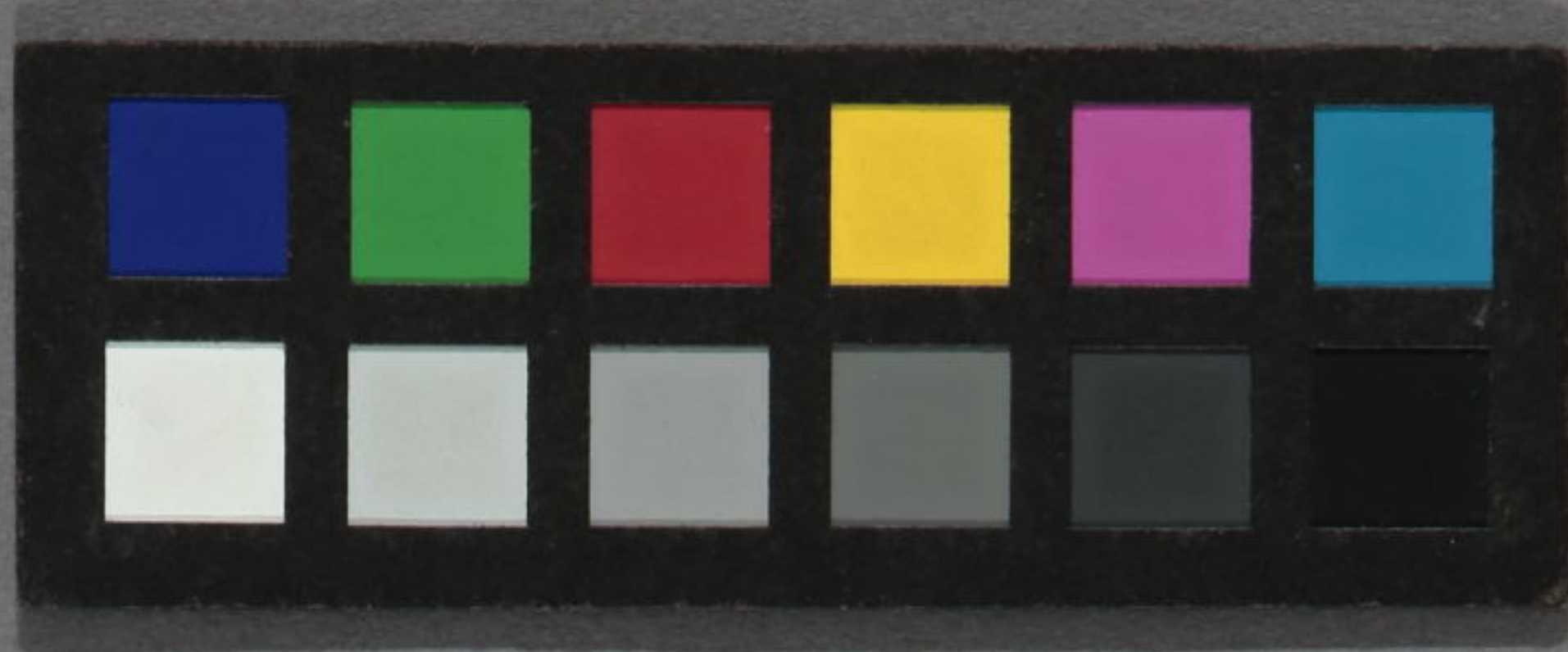


芝圃



Handwritten Japanese characters in black ink, likely a signature or title, located at the top of the page.





一三五

立圃 鬼
五七〇

立圃

維屋立圃 鬼越贊
角持燈



