

新編 文系



新編御行ノ集抄

流中

四一室

東本堂

Handwritten text in a cursive script, likely a form of shorthand or a specific dialect. The text is arranged in approximately 10 horizontal lines across the page.

姨 於 心 娘

標 記

Handwritten text in a cursive script, continuing from the previous page. The text is arranged in approximately 10 horizontal lines across the page.

Handwritten text at the top left of the left page.

Handwritten text at the top right of the left page.

Main body of handwritten text on the left page, consisting of approximately 10 lines of cursive script.

Main body of handwritten text on the right page, continuing the cursive script from the left page.

Handwritten text in Arabic script, consisting of approximately 12 lines of dense cursive script.

بسم الله الرحمن الرحيم
الحمد لله رب العالمين
والصلاة والسلام على سيدنا محمد وآله
الطاهرين

Handwritten text in Arabic script, continuing from the previous page with approximately 10 lines of dense cursive script.

Handwritten text in a cursive script, likely a historical document or letter. The text is written in a fluid, connected style across approximately 10 lines. The ink is dark, and the paper shows signs of age and staining.

Handwritten text in a cursive script, continuing from the previous page. The text is written in a fluid, connected style across approximately 10 lines. The ink is dark, and the paper shows signs of age and staining.

Handwritten text in a cursive script, likely a historical document or manuscript. The text is written in a dark ink on aged, yellowish paper. It consists of approximately 15 lines of text, with some lines starting with a small circular symbol. The script is dense and flowing, characteristic of a cursive hand. The text is arranged in a single column on each page, with some lines extending across the gutter. The overall appearance is that of a well-preserved historical document.

Handwritten text in a cursive script, likely a historical document or manuscript. The text is written in a dark ink on aged, yellowed paper. The script is dense and continuous across the page, with some variations in line height and spacing. The text is arranged in a single column, filling most of the page area. The ink shows some signs of fading and bleed-through from the reverse side of the page.

Handwritten text in a cursive script, consisting of approximately 10 lines of text.

高 雄

高 雄

Handwritten text in a cursive script, consisting of approximately 10 lines of text.

Handwritten text in a cursive script, likely a title or introductory line.

Handwritten text in a cursive script, continuing the narrative or list.

Handwritten text in a cursive script, continuing the narrative or list.

Handwritten text in a cursive script, continuing the narrative or list.

Handwritten text in a cursive script, continuing the narrative or list.

Handwritten text in a cursive script, continuing the narrative or list.

Handwritten text in a cursive script, continuing the narrative or list.

Handwritten text in a cursive script, continuing the narrative or list.

Handwritten text in a cursive script, continuing the narrative or list.

Handwritten text in a cursive script, continuing the narrative or list.

Handwritten text in a cursive script, continuing the narrative or list.

Handwritten text in a cursive script, continuing the narrative or list.

Handwritten text in a cursive script, continuing the narrative or list.

Handwritten text in a cursive script, continuing the narrative or list.

Handwritten text in a cursive script, continuing the narrative or list.

Handwritten text in a cursive script, continuing the narrative or list.

Handwritten text in a cursive script, likely Persian or Urdu, spanning two pages of a manuscript. The text is arranged in approximately 15 horizontal lines across the pages. The script is highly stylized and fluid, characteristic of the 'Nasta'liq' style. The ink is dark, and the paper shows signs of age and wear, including some staining and discoloration. The text appears to be a continuous passage, possibly a letter or a section of a larger work.

Handwritten text in a cursive script, likely a historical document or manuscript. The text is written in a fluid, connected style across the page.

Handwritten text, possibly a signature or a specific section header, located in the middle of the page.

Handwritten text, possibly a signature or a specific section header, located at the bottom of the page.

Handwritten text in a cursive script, continuing the document or manuscript. The text is written in a fluid, connected style across the page.

Handwritten text in Urdu script, consisting of approximately 12 lines of dense, cursive writing.

Handwritten text in Urdu script, appearing as a short phrase or signature.

Handwritten text in Urdu script, appearing as a short phrase or signature.

Handwritten text in Urdu script, consisting of approximately 4 lines of dense, cursive writing.

佈 瞻

Handwritten cursive script, likely a religious or philosophical text, consisting of approximately 12 lines of text.

佛 經

法 華 經

Handwritten cursive script, likely a religious or philosophical text, consisting of approximately 4 lines of text.

Handwritten text in a cursive script, likely a form of shorthand or a specific dialect. The text is arranged in approximately 15 horizontal lines across the page. The script is dense and fluid, with many loops and flourishes. The ink is dark, and the paper shows signs of age and wear.

Handwritten text in Arabic script, consisting of approximately 10 lines of cursive script.

١٤٤٤

١٤٤٤

Handwritten text in Arabic script, consisting of approximately 10 lines of cursive script.

Handwritten text in Arabic script, consisting of approximately 10 lines of cursive script.

Handwritten text in a cursive script, likely a historical document or manuscript, spanning across the gutter of the open book. The text is written in dark ink on aged, yellowish paper. The script is highly stylized and continuous across the two pages, with some variations in line thickness and spacing. The text appears to be a single paragraph or a series of connected lines of prose. The right page has a small number '7' written near the top edge. The left page has a small number '1' written near the top edge.

Handwritten text in a cursive script, likely a historical document or manuscript. The text is written in a dark ink on aged, yellowish paper. The script is dense and continuous across the page, with some variations in line thickness and spacing. The text is arranged in a single column, starting from the top left and moving downwards. The overall appearance is that of a well-preserved but slightly worn historical record.

Handwritten text in a cursive script, likely a historical document or manuscript, spanning two pages. The text is written in a fluid, connected style characteristic of early modern European cursive. The script is dense and fills most of the page area. The ink is dark, and the paper shows signs of age, including some staining and discoloration. The text is arranged in approximately 15-20 lines per page, with some variations in line length and spacing. The overall appearance is that of a well-used, possibly legal or administrative, document from the 16th or 17th century.

Handwritten text in a cursive script, consisting of two lines.

Handwritten characters, possibly a signature or a specific word.

Handwritten characters, possibly a signature or a specific word.

Handwritten text in a cursive script, consisting of four lines.

Handwritten text in a cursive script, consisting of eight lines.

Handwritten text in a cursive script, likely a personal note or entry.

植 桔 小 庭 記

Handwritten signature or name.

Main body of handwritten text in a cursive script, consisting of approximately 15 lines of text.


~~~~~

~~~~~

~~~~~

~~~~~

~~~~~

~~~~~

~~~~~

~~~~~

~~~~~

~~~~~

~~~~~

~~~~~

~~~~~

~~~~~

~~~~~

~~~~~


Handwritten text in a cursive script, likely a historical document or manuscript. The text is written in a dark ink on aged, yellowish paper. It consists of approximately 15 lines of text, with some lines starting with a large initial letter. The script is highly stylized and difficult to decipher without a key or context. The text is arranged in a single column on each page, with a clear margin on the left side. The overall appearance is that of a well-preserved but aged manuscript.

Handwritten text in a cursive script, likely a form of shorthand or a specific dialect. The text is arranged in approximately 12 horizontal lines across the page. The characters are fluid and interconnected, typical of cursive handwriting. The lines are roughly parallel and fill most of the page area.

Handwritten text in a cursive script, continuing from the previous page. It consists of about 6 horizontal lines. The script is consistent with the one on the left page, showing a high degree of fluidity and connection between letters.

Handwritten text in Urdu script, consisting of approximately 15 lines of calligraphy across two pages. The script is a cursive style, likely Nasta'liq, and is written in black ink on aged, yellowish paper. The text is arranged in a single column on each page, with some lines starting with a small decorative flourish or 'shamsa'.

بِسْمِ اللَّهِ الرَّحْمَنِ الرَّحِيمِ
مَنْ كَانَ يَوْمَ الْقِيَامَةِ
مَعَهُ كِتَابٌ يَشَاءُ
بِشَيْءٍ مِنْهُ يَتْلُوهُ
يُحِبُّهُ وَيُحِبُّهُ عَلَيْهِ
الْحَقُّ وَالْحَقُّ عَلَيْهِ
الْحَقُّ وَالْحَقُّ عَلَيْهِ
الْحَقُّ وَالْحَقُّ عَلَيْهِ
الْحَقُّ وَالْحَقُّ عَلَيْهِ

مَنْ كَانَ يَوْمَ الْقِيَامَةِ
مَعَهُ كِتَابٌ يَشَاءُ
بِشَيْءٍ مِنْهُ يَتْلُوهُ
يُحِبُّهُ وَيُحِبُّهُ عَلَيْهِ
الْحَقُّ وَالْحَقُّ عَلَيْهِ
الْحَقُّ وَالْحَقُّ عَلَيْهِ
الْحَقُّ وَالْحَقُّ عَلَيْهِ
الْحَقُّ وَالْحَقُّ عَلَيْهِ

مَنْ كَانَ يَوْمَ الْقِيَامَةِ
مَعَهُ كِتَابٌ يَشَاءُ
بِشَيْءٍ مِنْهُ يَتْلُوهُ
يُحِبُّهُ وَيُحِبُّهُ عَلَيْهِ
الْحَقُّ وَالْحَقُّ عَلَيْهِ
الْحَقُّ وَالْحَقُّ عَلَيْهِ
الْحَقُّ وَالْحَقُّ عَلَيْهِ
الْحَقُّ وَالْحَقُّ عَلَيْهِ

Handwritten text in Arabic script, consisting of approximately 10 lines of cursive script.

Handwritten text in Arabic script, consisting of approximately 10 lines of cursive script.

Handwritten text in Arabic script, consisting of approximately 10 lines of cursive script.

Handwritten word or phrase in Arabic script, possibly a section header.

Handwritten word or phrase in Arabic script, possibly a section header.

Handwritten text in Arabic script, consisting of approximately 10 lines of cursive script.

Handwritten text in a cursive script, likely a form of shorthand or a specific dialect. The text is arranged in approximately 15 horizontal lines across the page. The script is highly stylized and difficult to decipher without a key. The lines are roughly parallel and fill most of the page area.

Handwritten text in a cursive script, likely a form of Arabic or Persian. The text is written across approximately 12 lines on the left page. The script is fluid and connected, with some characters appearing to be ligatures. The ink is dark and the paper shows signs of age and wear.

Handwritten text in a cursive script, likely a form of Arabic or Persian. This block appears to be a section header or a specific line of text, possibly a date or a title, written in a slightly larger or more distinct hand than the surrounding text.

Handwritten text in a cursive script, likely a form of Arabic or Persian. This block appears to be a section header or a specific line of text, possibly a date or a title, written in a slightly larger or more distinct hand than the surrounding text.

Handwritten text in a cursive script, likely a form of Arabic or Persian. The text is written across approximately 5 lines on the right page. The script is consistent with the left page, showing a continuous flow of writing across the gutter of the book.

Handwritten text in a cursive script, likely a form of shorthand or a specific dialect. The text is arranged in approximately 15 horizontal lines across the page. The script is highly stylized, with many loops and flourishes. The ink is dark, and the paper shows signs of age and wear, particularly at the top edge where the binding is visible. The text is written in a consistent, flowing manner, suggesting a continuous piece of writing or a specific set of instructions.

Handwritten text in a cursive script, likely a personal letter or a short story. The text is written in a fluid, connected style across several lines.

Handwritten text, possibly a signature or a specific phrase, located in the middle of the page.

Handwritten text, continuing the narrative or the letter from the previous lines.

Handwritten text, showing a continuation of the script across the page.

Handwritten text, with some characters appearing to be in a different script or dialect.

Handwritten text, maintaining the cursive style throughout.

Handwritten text, showing the flow of the writing across the page.

Handwritten text, concluding the section or the letter.

Handwritten text in a cursive script, likely Persian or Urdu, spanning two pages of a notebook. The text is written in black ink on aged, yellowish paper. The script is highly stylized and continuous across the lines. The right page contains approximately 12 lines of text, while the left page contains approximately 11 lines. The text appears to be a single, flowing passage, possibly a letter or a piece of poetry. The ink is dark and the lines are well-defined, though there are some faint smudges and variations in line thickness, characteristic of handwritten cursive. The overall appearance is that of a personal or historical document.

Handwritten text in a cursive script, likely a form of shorthand or a specific dialect. The text is arranged in approximately 15 horizontal lines across the page. The script is dense and fluid, with many loops and flourishes. The ink is dark, and the paper shows signs of age and wear, including some staining and discoloration. The text is written in a consistent style throughout the page.

Handwritten text in a cursive script, likely a historical document or letter, spanning the right page of the open book. The text is written in a fluid, connected style with some ink bleed-through from the reverse side.

目錄

Handwritten text below the section header, possibly a page number or a reference mark.

Handwritten text in a cursive script, likely a historical document or letter, spanning the left page of the open book. The text is written in a fluid, connected style with some ink bleed-through from the reverse side.

Handwritten text in a cursive script, likely a historical document or manuscript. The text is written in a dark ink on aged, yellowed paper. The script is highly stylized and difficult to decipher. The text is arranged in approximately 12 horizontal lines across the page. There are some faint markings and bleed-through visible on the page.

Handwritten text in a cursive script, likely a historical document or manuscript. The text is written in a dark ink on aged, yellowish paper. The script is dense and continuous across the page, with some variations in line thickness and spacing. The text is arranged in a single column, running from top to bottom. The paper shows signs of wear, including some staining and discoloration, particularly near the center fold and the edges. The overall appearance is that of an old, well-used manuscript.

Handwritten text in a cursive script, likely a historical document or manuscript. The text is written in a dark ink on aged, yellowish paper. The script is dense and flowing, characteristic of early modern cursive. The text is arranged in approximately 15 lines across the page. The first line begins with a large, decorative initial letter, possibly 'S'. The text continues down the page, with some lines showing signs of fading or ink bleed-through from the reverse side. The overall appearance is that of a well-preserved but aged historical document.

Handwritten text in a cursive script, likely a historical document or manuscript. The text is written in a dark ink on aged, yellowish paper. It consists of approximately 15 lines of text, with some lines starting with a small decorative flourish or initial. The script is dense and flowing, characteristic of early modern cursive. The text is arranged in a single column on the page, with some lines extending towards the right margin. The overall appearance is that of a well-preserved historical document.

Handwritten text in a cursive script, likely a historical document or manuscript, spanning two pages. The text is written in dark ink on aged, yellowish paper. The script is highly stylized and appears to be a form of shorthand or a specific dialect of a historical language. The text is arranged in approximately 15 horizontal lines across both pages, with some lines starting with a small decorative flourish or initial letter. The ink is dark and the paper shows signs of age, including some staining and discoloration. The handwriting is consistent throughout, suggesting a single scribe. The overall appearance is that of a well-preserved but aged historical document.

Handwritten text in a cursive script, likely a form of Urdu or Persian, spanning two pages of a manuscript. The text is arranged in approximately 15 horizontal lines across the pages. The script is highly stylized and fluid, characteristic of the 'Nasta'liq' style. The ink is dark, and the paper shows signs of age and wear.

Handwritten text in a cursive script, likely a form of shorthand or a specific dialect. The text is arranged in approximately 15 lines across the page. The script is highly stylized and difficult to decipher without a key. The lines are roughly parallel and fill most of the page area.

Handwritten text in cursive script, likely a continuation from the previous page.

折 并 説

Handwritten text, possibly a signature or a specific note.

Main body of handwritten text in cursive script on the right page.

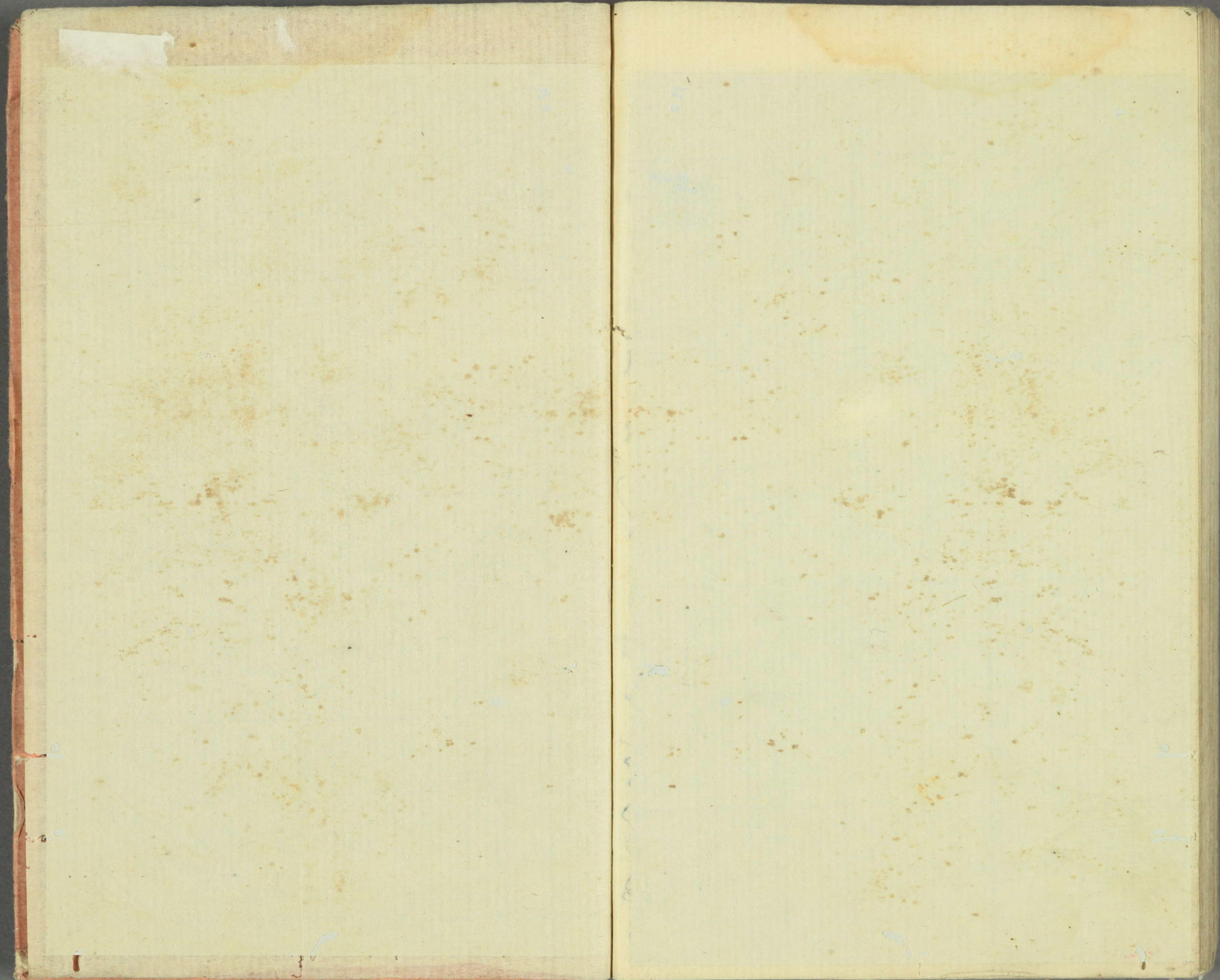
Handwritten text, possibly a signature or a specific note.

Main body of handwritten text in cursive script on the left page.



Handwritten characters in seal script, likely a signature or name.

Main body of handwritten text in seal script, consisting of approximately 15 lines of characters.



中國新
張從年六月
川村宿

