



平家物語

八



九曜文庫

平家物語卷第八目錄

山門詣幸乃事

那都詣事

宇治詣幸乃事

とととに事

太宰府ゆら乃事

征夷將軍の院女乃事

猫間乃事

水滸合我乃事

頼尾とこの事

室山ふりせいの事
報判官の事
法住寺合裁の事

平家物語卷第八

山門抄事

其の永二年七月廿四日乃取違ひし法皇の
按察使大納言と申す事ありしに子息右馬の
のしよを討つるに及ばずともあはれし事ありしに
取をりし事ありしに由のありし事ありしに
かゝる寺僧と申す事ありしに教のありし事ありしに
ありし事ありしにありし事ありしにありし事ありしに
ありし事ありしにありし事ありしにありし事ありしに
ありし事ありしにありし事ありしにありし事ありしに

Handwritten text in a cursive script, likely a historical document or letter. The text is written in a fluid, connected style across approximately 12 lines. The characters are dense and difficult to decipher without specialized knowledge of the script.

Handwritten text in a cursive script, continuing from the previous page. The text is written in a fluid, connected style across approximately 12 lines. The characters are dense and difficult to decipher without specialized knowledge of the script.

Handwritten text in Arabic script, likely a religious or philosophical treatise. The text is written in a cursive style and spans the width of the page.

Handwritten text in Arabic script, continuing the text from the previous page. It includes several lines of cursive writing.

Handwritten text in a cursive script, likely a form of Urdu or Persian, consisting of approximately 12 lines of text.

Handwritten text in a cursive script, likely a form of Urdu or Persian, consisting of approximately 12 lines of text.

Handwritten text in cursive script, likely a letter or document, written on the left page of an open manuscript. The text is dense and fills most of the page.

Handwritten text in cursive script, likely a letter or document, written on the right page of an open manuscript. The text is dense and fills most of the page.

Handwritten text in a cursive script, likely a historical document or letter. The text is written in a fluid, connected style across approximately 12 lines.

Handwritten text in a cursive script, continuing from the previous page. The text is written in a fluid, connected style across approximately 12 lines.

Handwritten text in a cursive script, likely a historical document or letter. The text is written in a fluid, connected style across approximately 12 lines.

Handwritten text in a cursive script, continuing from the previous page. The text is written in a fluid, connected style across approximately 12 lines.

Handwritten text in a cursive script, likely a historical document or letter. The text is written in a dark ink on aged paper. It consists of approximately 12 lines of text, starting with a large initial letter. The script is highly stylized and characteristic of the early modern period.

Handwritten text in a cursive script, continuing from the previous page. It consists of approximately 12 lines of text, starting with a large initial letter. The script is highly stylized and characteristic of the early modern period.

Handwritten text in a cursive script, likely a letter or document, written on the right page of an open book. The text is arranged in approximately 12 horizontal lines, flowing from right to left across the page.

Handwritten text in a cursive script, likely a letter or document, written on the left page of an open book. The text is arranged in approximately 12 horizontal lines, flowing from right to left across the page.

Handwritten text in a cursive script, likely a historical document or letter. The text is written in a dark ink on aged paper. It consists of approximately 15 lines of text, starting with a small dot at the top left. The script is highly stylized and difficult to decipher without a key.

Handwritten text in a cursive script, continuing from the previous page. It consists of approximately 15 lines of text, starting with a small dot at the top left. The script is highly stylized and difficult to decipher without a key.

Handwritten text in a cursive script, likely a letter or document, written on the left page of the manuscript.

Handwritten text in a cursive script, likely a letter or document, written on the right page of the manuscript.

Handwritten text in a cursive script, likely a historical document or letter. The text is written in a dark ink on aged paper. It begins with a large initial character, possibly 'A' or 'Al', followed by several lines of text. The script is highly stylized and characteristic of the early modern period.

Handwritten text in a cursive script, continuing from the previous page. The text is written in a dark ink on aged paper. It begins with a large initial character, possibly 'A' or 'Al', followed by several lines of text. The script is highly stylized and characteristic of the early modern period.

Handwritten text in a cursive script, likely a historical document or letter, covering the left page of the manuscript.

Handwritten text in a cursive script, likely a historical document or letter, covering the right page of the manuscript.

Handwritten text in a cursive script, likely a historical document or letter. The text is written in a dark ink on aged paper. It consists of approximately 12 lines of text, starting with a large initial letter. The script is highly stylized and difficult to decipher without a key.

Handwritten text in a cursive script, continuing from the previous page. It consists of approximately 12 lines of text, starting with a large initial letter. The script is highly stylized and difficult to decipher without a key.

Handwritten text in a cursive script, likely a letter or a page from a manuscript. The text is written in a fluid, connected style across approximately 12 lines.

Handwritten text in a cursive script, continuing from the previous page. It begins with a large initial letter and spans about 10 lines.

Handwritten text in a cursive script, possibly a signature or a specific phrase, centered on the page.

Handwritten text in a cursive script, continuing from the previous page. It spans about 10 lines and ends with a large initial letter.

Handwritten text in a cursive script, likely a historical document or letter. The text is written in a fluid, connected style across approximately 12 lines. The characters are dark and the ink shows some signs of age and bleed-through from the reverse side.

Handwritten text in a cursive script, continuing from the previous page. The text is written in a fluid, connected style across approximately 12 lines. The characters are dark and the ink shows some signs of age and bleed-through from the reverse side.

らるる時々の舞曲ありてさきよりと踊教上
人の回精ありてその曲もよきものありて
世よりその曲も舞曲大言都とありて
しるしに回精ありてその曲もよきものありて
馬も曲もありて舞曲大言都とありて
世よりその曲も舞曲大言都とありて
しるしに回精ありてその曲もよきものありて
馬も曲もありて舞曲大言都とありて
世よりその曲も舞曲大言都とありて
しるしに回精ありてその曲もよきものありて

舞曲大言都とありてその曲もよきものありて
馬も曲もありて舞曲大言都とありて
世よりその曲も舞曲大言都とありて
しるしに回精ありてその曲もよきものありて
馬も曲もありて舞曲大言都とありて
世よりその曲も舞曲大言都とありて
しるしに回精ありてその曲もよきものありて
馬も曲もありて舞曲大言都とありて
世よりその曲も舞曲大言都とありて
しるしに回精ありてその曲もよきものありて

Handwritten text in cursive script, likely a letter or document, covering the left page of the manuscript.

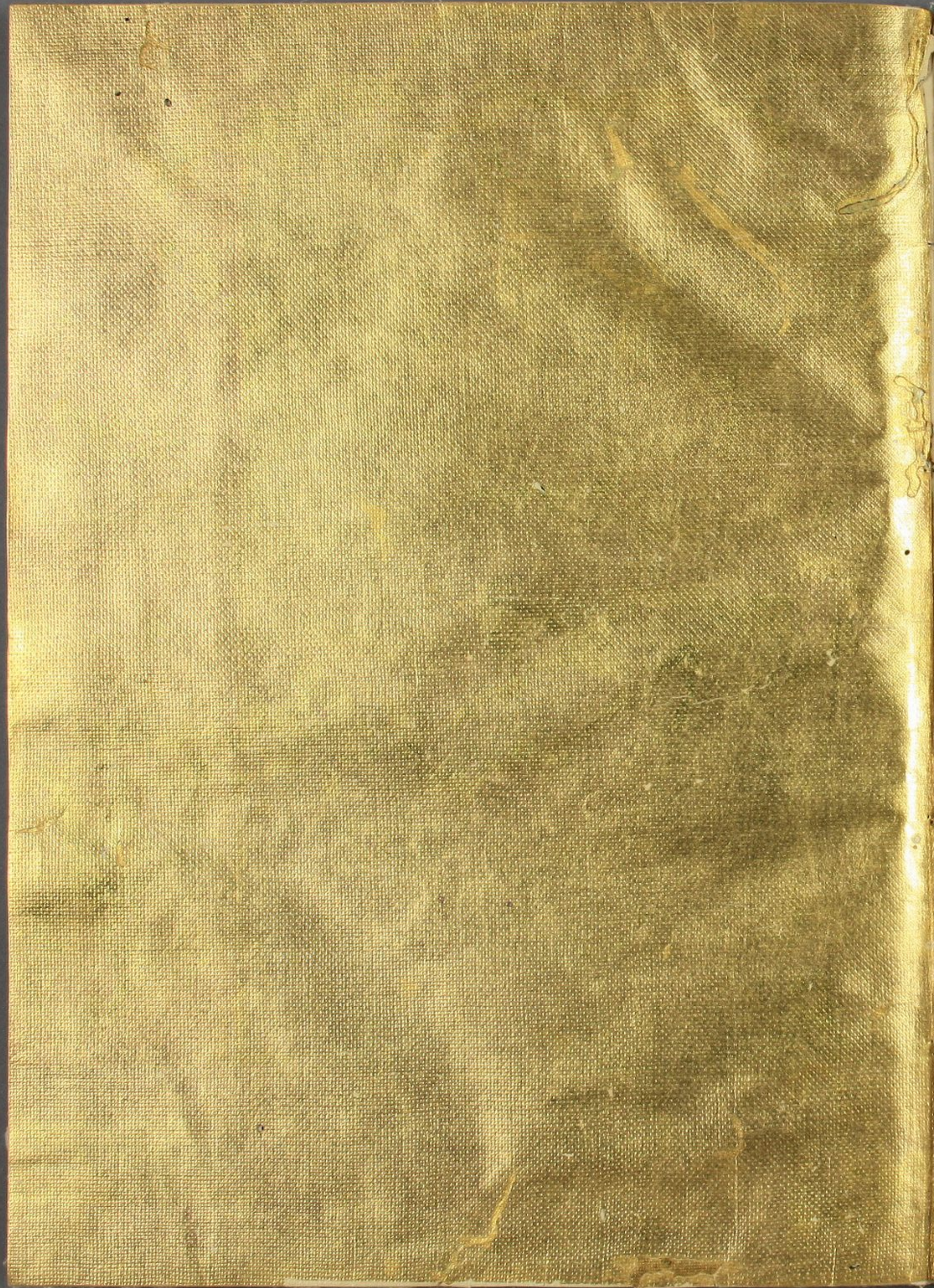
Handwritten text in cursive script, likely a letter or document, covering the right page of the manuscript.

Handwritten text in a cursive script, likely a letter or document. The text is written in a fluid, connected style across approximately 12 lines. The ink is dark and the paper shows signs of age and wear.

Handwritten text in a cursive script, continuing from the previous page. The text is written in a fluid, connected style across approximately 12 lines. The ink is dark and the paper shows signs of age and wear.

Handwritten text in a cursive script, likely a letter or document. The text is written in a fluid, connected style across approximately 12 lines. The characters are dark and the paper shows signs of age and wear.

Handwritten text in a cursive script, likely a letter or document. The text is written in a fluid, connected style across approximately 12 lines. The characters are dark and the paper shows signs of age and wear.



Blank page with faint, illegible ghosting of text from the reverse side.

