



平治物語巻七第一目錄

信賴信西不悛の事

のふりつとせんせいとありけりとの事

三條殿(教向)付信西(富所)焼押

信西の子息(剛官)の事 付(陰目)の事 并

惠源(大上)の事

信西の首(多)拵(大)の事

の事

唐僧(其)朝(乃)の事

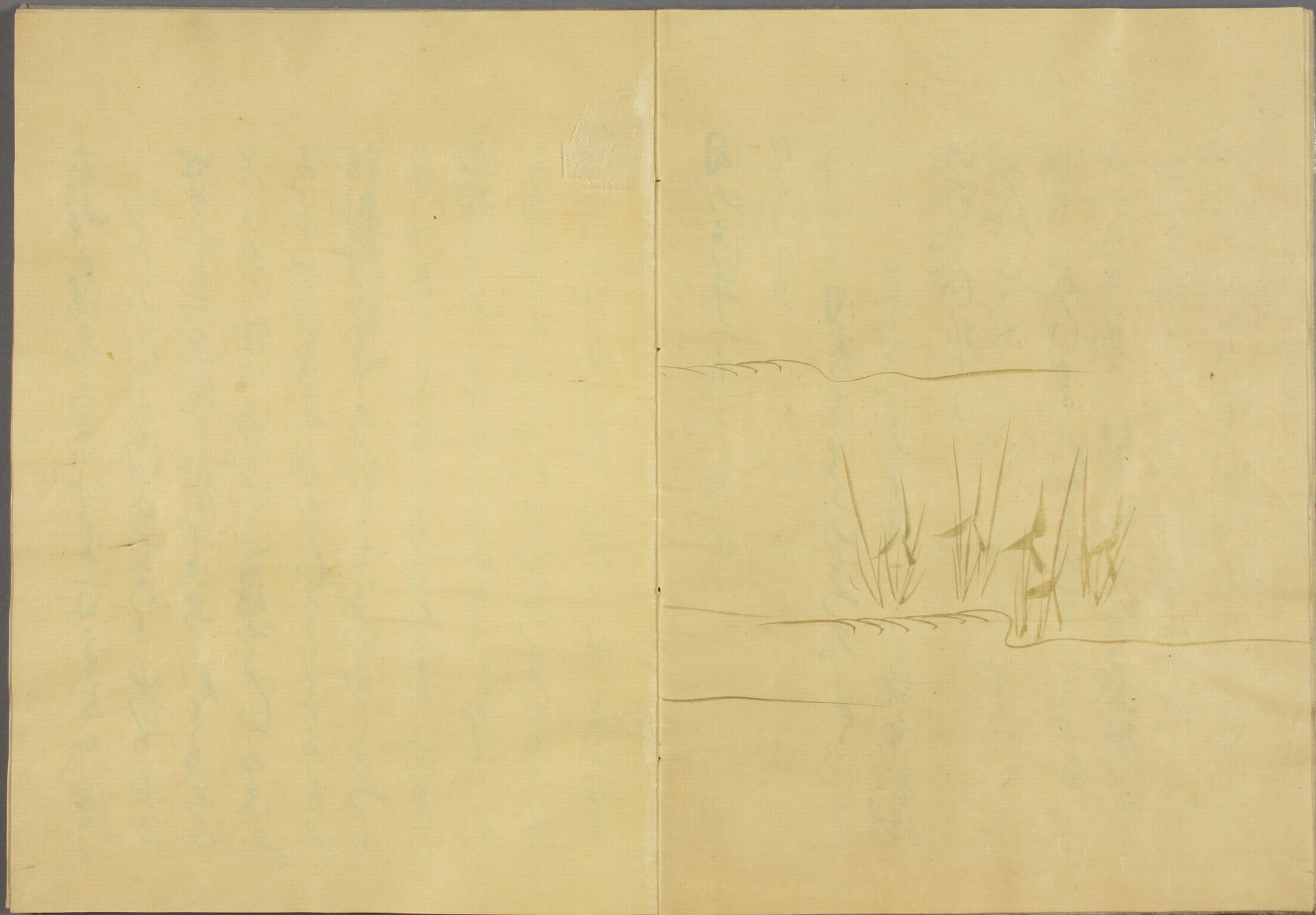


平治物語結巻第一

信賴とんせいの不快の事

いとうよねもくしんつんせいのと皇五帝の國と
ねもく四岳八元れ民とわりのふとれと
ふのいものてつんせいの官の何れも
つんせいの君はつんせいの
も官とつんせいの
織とつんせいの
ふつんせいの
ゆゑ舟航の永海とつんせいの





決つぎの... 國... 時... 天... 信... 決

去ぬ。保元三年八月十日... 信... 西雄... 信... 信...

信賴彌信西のちりりちりちりとびるほろこまの事

らふふたよのふらふけい息新侍はの

らふと大氣たいきとびるひいよあたら

つとよ平家へいけのま威まゐとびるあてと

とびるあてとびるあてとびるあてと

とびるあてとびるあてとびるあてと

とびるあてとびるあてとびるあてと

とびるあてとびるあてとびるあてと

とびるあてとびるあてとびるあてと

とびるあてとびるあてとびるあてと

Faint bleed-through text from the reverse side of the page, including characters like '信賴' and '彌信'.

信西の信西
紀伊二領の事
天下の事
天下の事
天下の事
天下の事
天下の事
天下の事
天下の事
天下の事

古来清
天下の事
天下の事
天下の事
天下の事
天下の事
天下の事
天下の事
天下の事
天下の事

Handwritten text in a cursive script, likely a historical document or manuscript. The text is written in a dark ink on aged, yellowish paper. It consists of approximately 15 lines of text, with some lines starting with a small symbol or initial. The script is highly stylized and difficult to decipher without a key.

Handwritten text in a cursive script, likely a historical document or manuscript. The text is written in a dark ink on aged, yellowish paper. It consists of approximately 15 lines of text, with some lines starting with a small symbol or initial. The script is highly stylized and difficult to decipher without a key.



Handwritten text in a cursive script, possibly a signature or a name.

Handwritten text in a cursive script, possibly a name or a title.

Handwritten text in a cursive script, possibly a name or a title.

Handwritten text in a cursive script, possibly a name or a title.

Main body of handwritten text in a cursive script, consisting of several lines of text.

Handwritten text in a cursive script, likely a personal letter or diary entry. The text is written in a fluid, connected style across approximately 12 lines.

Handwritten text in a cursive script, continuing from the previous page. It includes several lines of text, with some characters appearing to be in a different script or dialect. The text is written in a fluid, connected style across approximately 12 lines.

Handwritten text in cursive script, likely a letter or document, spanning the right page of the manuscript. The text is written in a fluid, connected style.

Handwritten text at the top of the left page, possibly a header or a specific address.

Handwritten text in the middle of the left page, continuing the script.

Handwritten text at the bottom of the left page, possibly a signature or a closing.

Handwritten text at the very bottom of the left page.

Handwritten text in the lower middle of the left page.

Handwritten text in the upper middle of the left page.

Handwritten text in the lower middle of the left page.

Handwritten text in the lower middle of the left page.

Handwritten text in the lower middle of the left page.

Handwritten text at the bottom of the left page.

Handwritten text in a cursive script, likely a letter or document. The text is written in a fluid, connected style across approximately 12 lines.

Handwritten text in a cursive script, likely a letter or document. The text is written in a fluid, connected style across approximately 12 lines. There are some faint markings or bleed-through visible in the background.

Handwritten text in a cursive script, likely a historical document or letter. The text is written in a fluid, connected style across approximately 12 lines. The characters are dark and the paper shows signs of age and wear.

Handwritten text in a cursive script, continuing from the previous page. The text is written in a fluid, connected style across approximately 12 lines. The characters are dark and the paper shows signs of age and wear.

Handwritten text in cursive script, likely a letter or document. The text is written in a fluid, connected style across approximately 12 lines.

Handwritten text in cursive script, likely a letter or document. The text is written in a fluid, connected style across approximately 12 lines. The word "御手紙" (letter) is visible at the top right.

Handwritten text in a cursive script, likely representing the katakana syllabary. The text consists of approximately 18 lines of continuous, flowing characters.

あいうえお
かきくけこ
さしすせそ
たちてと
なにぬねの
ひふひふほ
まみもめむ

あいう

えおかき

くけこさし

すせそ

たちてと

なにぬねの

あいうえお

あいう

Handwritten Japanese text, possibly a signature or name, written in cursive style. The text is partially obscured by a large, dark ink blot or stain.

Handwritten Japanese text, possibly a signature or name, written in cursive style.

Handwritten Japanese text, possibly a signature or name, written in cursive style.

Handwritten Japanese text, possibly a signature or name, written in cursive style.

Handwritten Japanese text, possibly a signature or name, written in cursive style.

Handwritten Japanese text, possibly a signature or name, written in cursive style.

Handwritten Japanese text, possibly a signature or name, written in cursive style.

Handwritten text in cursive script, likely a letter or document. The text is written in a fluid, connected style. The word "諸道" (Shudo) is clearly visible in the middle section.

Handwritten text in cursive script, continuing from the previous page. The text is dense and written in a consistent style.

信西 しんせい 南都 なんと 南都落 なんとらく の の 村 むら

Handwritten cursive script on the left page of an open book. The text is written in a fluid, continuous style, typical of the 'sōsho' (草書) style. The ink is dark and the paper is aged and yellowed. The characters are closely packed together, forming a dense line of text. The overall appearance is that of a personal or literary manuscript.

Handwritten cursive script on the right page of an open book. The text continues from the left page, maintaining the same fluid, continuous style. The ink is dark and the paper is aged and yellowed. The characters are closely packed together, forming a dense line of text. The overall appearance is that of a personal or literary manuscript.

此等之書所記之書名及卷數
 均與正史所載無異其間
 所載之書名多係古書且
 有已佚之書亦復見於此
 故可知此書之價值實非
 尋常之書可比也其書之
 體裁亦極其整齊且其書
 之內容亦極其豐富其書
 之體裁亦極其整齊且其書
 之內容亦極其豐富其書
 之體裁亦極其整齊且其書
 之內容亦極其豐富其書

信西

此等之書所記之書名及卷數
 均與正史所載無異其間
 所載之書名多係古書且
 有已佚之書亦復見於此
 故可知此書之價值實非
 尋常之書可比也其書之
 體裁亦極其整齊且其書
 之內容亦極其豐富其書
 之體裁亦極其整齊且其書
 之內容亦極其豐富其書

Handwritten text in a cursive script, likely a historical document or letter. The text is written in a fluid, connected style across approximately 12 lines.

Handwritten text in a cursive script, continuing from the previous page. The text is written in a fluid, connected style across approximately 12 lines.

Handwritten text in a cursive script, likely a historical document or manuscript. The text is written in a fluid, connected style across approximately 12 lines. The characters are dark and the paper shows signs of age.

Handwritten text in a cursive script, continuing from the previous page. The text is written in a fluid, connected style across approximately 12 lines. The characters are dark and the paper shows signs of age.

くわいふあひ

あひふくわい

あひあひあひ

あひあひあひ

あひあひあひ

あひあひあひ

あひあひあひ

あひあひあひ

あひあひあひ

あひあひあひ



Handwritten text in a cursive script, likely a historical document or manuscript. The text is written in a fluid, connected style across approximately 12 lines. Some characters are written in a slightly larger or bolder hand, possibly indicating emphasis or specific terminology. The ink is dark and the paper shows signs of age.

Handwritten text in a cursive script, continuing from the previous page. The text is written in a fluid, connected style across approximately 12 lines. The ink is dark and the paper shows signs of age.

西
...
...

...

...

...

...

...

...

...

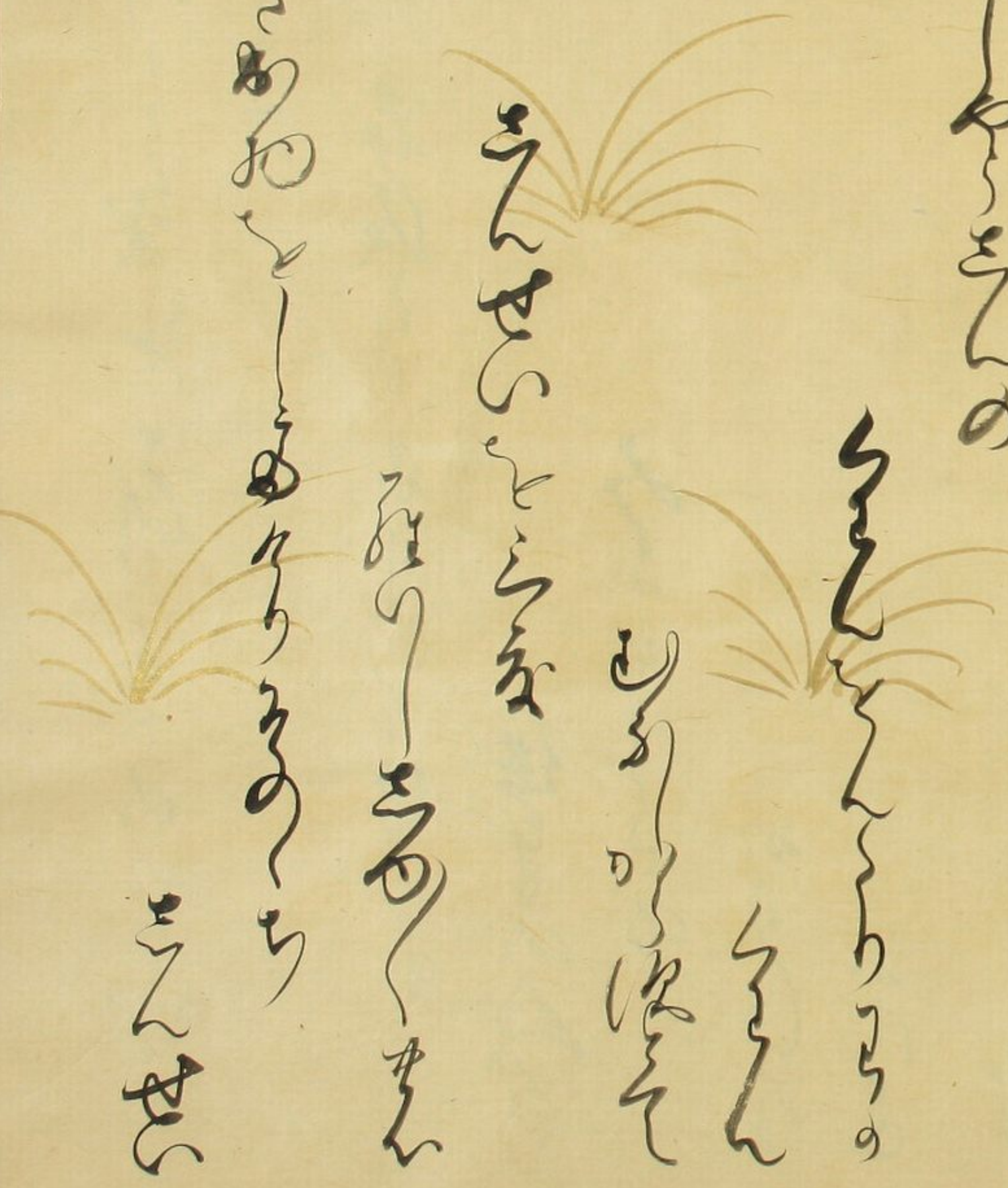
...

天下一統を天下にわたるは先相あり
 べきは唐僧の傳へたるを
 僧の傳へたるを僧の傳へたるを
 僧の傳へたるを僧の傳へたるを
 僧の傳へたるを僧の傳へたるを
 僧の傳へたるを僧の傳へたるを
 僧の傳へたるを僧の傳へたるを
 僧の傳へたるを僧の傳へたるを
 僧の傳へたるを僧の傳へたるを
 僧の傳へたるを僧の傳へたるを

ねえわあまきょくくくくくくく
 のあかりくくくくくくくくくく
 せんせいのくくくくくくくくくく

せんせいのくくくくくくくくくく

せんせいのくくくくくくくくくく
 せんせいのくくくくくくくくくく
 せんせいのくくくくくくくくくく



わ

せ

あ

い

う

え

お

か

き

