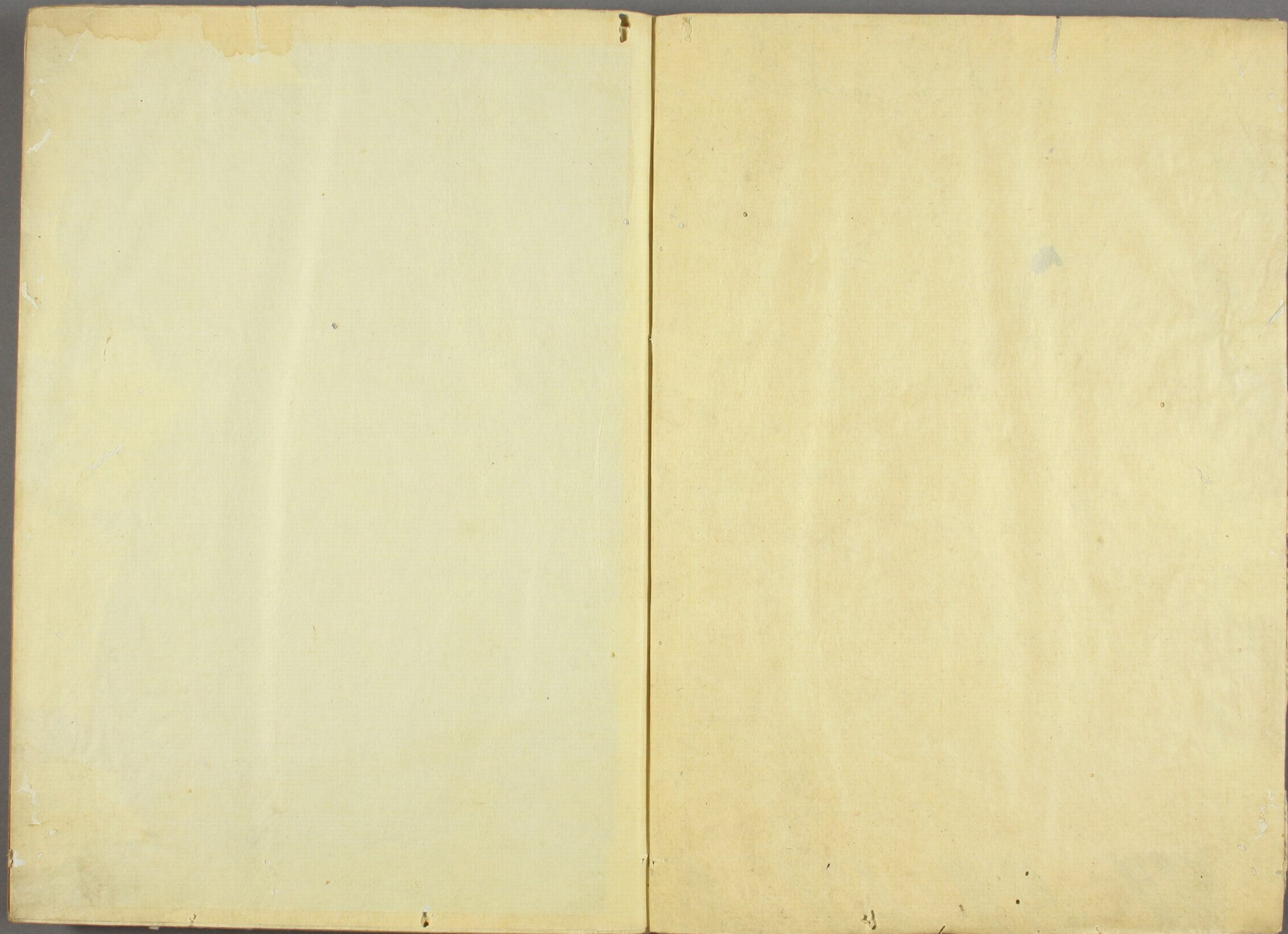




紫式部日記

上





Handwritten text in a cursive script, likely a letter or document. The text is written in a fluid, connected style across approximately 12 lines. A small vertical mark is visible near the top right of the page.

Handwritten text in a cursive script, likely a letter or document. The text is written in a fluid, connected style across approximately 12 lines. A small vertical mark is visible near the top right of the page.

Handwritten text in cursive script, likely a list or account of items, including the word "Purpur" and "Purpura".

Handwritten text in cursive script, including the word "Purpur" and "Purpura".

Handwritten text in cursive script, including the words "Purpur" and "Purpura".

Handwritten text in a cursive script, likely a letter or a page from a manuscript. The text is written in a fluid, connected style across several lines.

Handwritten text in a cursive script, continuing from the previous page. The text is written in a fluid, connected style across several lines.

Handwritten text in a cursive script, likely a letter or a page from a diary. The text is written in a fluid, connected style across approximately 12 lines.

Handwritten text in a cursive script, likely a letter or a page from a diary. The text is written in a fluid, connected style across approximately 12 lines.

Handwritten text in a cursive script, likely a letter or document, written on the right page of the open book. The text is dense and fills most of the page.

Handwritten text in a cursive script, likely a letter or document, written on the left page of the open book. The text is dense and fills most of the page.

Handwritten text in Arabic script, likely a religious or historical document, written in a cursive style. The text is arranged in approximately 12 horizontal lines across the page.

Handwritten text in Arabic script, continuing from the previous page. The text is arranged in approximately 12 horizontal lines across the page.

Handwritten text in a cursive script, likely a letter or document. The text is written in a fluid, connected style across approximately 12 lines.

Handwritten text in a cursive script, likely a letter or document. The text is written in a fluid, connected style across approximately 12 lines.

Handwritten text in cursive script, likely a letter or document, written on the right page of the open book. The text is dense and fills most of the page.

Handwritten text in cursive script, likely a letter or document, written on the left page of the open book. The text is dense and fills most of the page.

Handwritten text in a cursive script, likely a historical document or letter. The text is written in a dark ink on aged paper. It begins with a long horizontal line, followed by several lines of text. The script is highly stylized and difficult to decipher without a key. There are some small annotations or corrections in the middle of the text.

Handwritten text in a cursive script, likely a historical document or letter. The text is written in a dark ink on aged paper. It begins with a long horizontal line, followed by several lines of text. The script is highly stylized and difficult to decipher without a key. There are some small annotations or corrections in the middle of the text.

Handwritten text in a cursive script, likely a letter or document, written on the right page of the open book. The text is written in a dark ink and is arranged in approximately 12 horizontal lines. The script is highly stylized and difficult to decipher without a key.

Handwritten text in a cursive script, likely a letter or document, written on the left page of the open book. The text is written in a dark ink and is arranged in approximately 12 horizontal lines. The script is highly stylized and difficult to decipher without a key.

Handwritten text in a cursive script, likely a letter or a page from a manuscript. The text is written in a fluid, connected style across several lines.

Handwritten text in a cursive script, likely a letter or a page from a manuscript. The text is written in a fluid, connected style across several lines.

Handwritten text in a cursive script, likely a historical document or letter. The text is written in a dark ink on aged, yellowish paper. It consists of approximately 12 lines of text, starting with a capital letter that appears to be 'L'. The script is highly stylized and characteristic of the 17th or 18th century.

Handwritten text in a cursive script, continuing from the previous page. The text is written in a dark ink on aged, yellowish paper. It consists of approximately 12 lines of text, starting with a capital letter that appears to be 'L'. The script is highly stylized and characteristic of the 17th or 18th century.

Handwritten text in Arabic script, likely a religious or philosophical treatise. The text is written in a cursive style and spans the width of the page.

Handwritten text in Arabic script, continuing the text from the previous page. The script is dense and fills most of the page.

Handwritten text in Arabic script, likely a religious or historical document. The text is written in a cursive style and spans the width of the page.

Handwritten text in Arabic script, likely a religious or historical document. The text is written in a cursive style and spans the width of the page.

Handwritten text in Arabic script, consisting of approximately 12 lines of dense, cursive writing.

Handwritten text in Arabic script, consisting of approximately 12 lines of dense, cursive writing.

Handwritten text in a cursive script, likely a letter or a page from a diary. The text is written in a fluid, connected style across approximately 12 lines.

Handwritten text in a cursive script, likely a letter or a page from a diary. The text is written in a fluid, connected style across approximately 12 lines.

Handwritten text in a cursive script, likely a historical document or letter. The text is written in dark ink on aged, yellowish paper. It begins with a large initial letter, possibly 'D', and continues with several lines of text. The script is highly stylized and characteristic of the 17th or 18th century.

Handwritten text in a cursive script, continuing from the previous page. The text is written in dark ink on aged, yellowish paper. It begins with a large initial letter, possibly 'D', and continues with several lines of text. The script is highly stylized and characteristic of the 17th or 18th century.

Handwritten text in a cursive script, likely a letter or document, written on the right page of the manuscript.

Handwritten text in a cursive script, likely a letter or document, written on the left page of the manuscript.

Handwritten text in a cursive script, likely a letter or document, written on the right page of the manuscript.

Handwritten text in a cursive script, likely a letter or document, written on the left page of the manuscript.

Handwritten text in a cursive script, likely a letter or a page from a manuscript. The text is written in a fluid, connected style across approximately 12 lines.

Handwritten text in a cursive script, likely a letter or a page from a manuscript. The text is written in a fluid, connected style across approximately 12 lines.

Handwritten text in cursive script, likely a letter or journal entry, covering the right page of the open book.

Handwritten text in cursive script, likely a letter or journal entry, covering the left page of the open book.

Handwritten text in a cursive script, likely a historical document or letter. The text is written in a dark ink on aged, yellowish paper. It consists of approximately 12 lines of text, starting with a large initial letter 'A' and ending with a period. The script is highly stylized and characteristic of the early modern period.

Handwritten text in a cursive script, likely a historical document or letter. The text is written in a dark ink on aged, yellowish paper. It consists of approximately 12 lines of text, starting with a large initial letter 'A' and ending with a period. The script is highly stylized and characteristic of the early modern period.

Handwritten text in a cursive script, likely a letter or a page from a manuscript. The text is written in a fluid, connected style across approximately 12 lines.

Handwritten text in a cursive script, likely a letter or a page from a manuscript. The text is written in a fluid, connected style across approximately 12 lines.

Handwritten text in a cursive script, likely a continuation of the text on the left page. The script is dense and fills most of the page.

Handwritten text in a cursive script, likely a continuation of the text on the right page. The script is dense and fills most of the page.

後撰集拾遺抄行保正持大平中納言延繁

寛弘五年

寛弘五年

左大臣

大納言道徳博

大納言懷忠氏上

右大臣顯光

權大納言實資右大将将察

權中納言補信中宮大夫右衛門将
十月十六日正二位

内大臣公季左大将

中納言公任

權中納言俊賢

權中納言忠補

矢多議有國

懷平

兼隆

經之房

前帥伊周

正三位頼通

後三位兼定

皇太后宮大夫
左衛門

治部中宮大夫
十月正二位

兵部

勘解由長官
播磨權守

春宮權大夫
左兵衛督伊予權守

右近中納言

左近中納言江權守

准大臣給封戸

春宮權大夫

右兵衛督

權中納言隆家

中納言時光

行成

補正

正光

實成

彈正尹

左大弁侍從

皇太后宮權大夫
式部大権
八十五

大藏口

右中納言

Handwritten text in a cursive script, likely a historical document or letter. The text is written in a dark ink on aged paper. It consists of approximately 12 lines of text, starting with a large initial letter 'C' and ending with a period. The script is highly stylized and characteristic of the 17th or 18th century.

Handwritten text in a cursive script, likely a historical document or letter. The text is written in a dark ink on aged paper. It consists of approximately 12 lines of text, starting with a large initial letter 'C' and ending with a period. The script is highly stylized and characteristic of the 17th or 18th century.

Handwritten text in a cursive script, likely a historical document or letter. The text is written in a dark ink on aged, yellowish paper. It consists of approximately 15 lines of text, starting with a large initial letter. The script is highly stylized and characteristic of the Ottoman or Persian calligraphic tradition.

Handwritten text in a cursive script, likely a historical document or letter. The text is written in a dark ink on aged, yellowish paper. It consists of approximately 15 lines of text, starting with a large initial letter. The script is highly stylized and characteristic of the Ottoman or Persian calligraphic tradition.

Handwritten text in a cursive script, likely a letter or a page from a manuscript. The text is written in a fluid, connected style with many loops and flourishes. It appears to be a personal communication or a formal document from the 17th or 18th century.

Handwritten text in a cursive script, continuing from the previous page. The handwriting is consistent with the first page, showing a high level of skill and a specific regional or personal style. The text is dense and fills most of the page.

Handwritten text in a cursive script, likely a personal letter or diary entry. The text is written in dark ink on aged, yellowed paper. It consists of approximately 12 lines of text, starting with a salutation and ending with a signature. The handwriting is fluid and characteristic of the 18th or 19th century.

Handwritten text in a cursive script, likely a personal letter or diary entry. The text is written in dark ink on aged, yellowed paper. It consists of approximately 12 lines of text, starting with a salutation and ending with a signature. The handwriting is fluid and characteristic of the 18th or 19th century.

Handwritten text in Arabic script, likely a religious or historical document. The text is written in a cursive style and spans the entire page.

Handwritten text in Arabic script, likely a religious or historical document. The text is written in a cursive style and spans the entire page.

Handwritten text in Arabic script, consisting of approximately 12 lines of dense cursive writing.

Handwritten text in Arabic script, consisting of approximately 12 lines of dense cursive writing.

Handwritten text in a cursive script, likely a letter or a page from a manuscript. The text is written in a fluid, connected style across approximately 12 lines.

Handwritten text in a cursive script, likely a letter or a page from a manuscript. The text is written in a fluid, connected style across approximately 12 lines. A small vertical mark or signature is visible near the bottom right of the page.

Handwritten text in Urdu script, consisting of approximately 12 lines of cursive writing.

Handwritten text in Urdu script, consisting of approximately 12 lines of cursive writing.

وہاں سے پہلے ہی کہیں سے آئے ہوں
میں نے یہاں پہنچنے سے پہلے ہی
اپنے دل میں یہ سوچا تھا کہ
میں نے یہاں پہنچنے سے پہلے ہی
اپنے دل میں یہ سوچا تھا کہ
میں نے یہاں پہنچنے سے پہلے ہی
اپنے دل میں یہ سوچا تھا کہ
میں نے یہاں پہنچنے سے پہلے ہی
اپنے دل میں یہ سوچا تھا کہ

میں نے یہاں پہنچنے سے پہلے ہی
اپنے دل میں یہ سوچا تھا کہ
میں نے یہاں پہنچنے سے پہلے ہی
اپنے دل میں یہ سوچا تھا کہ
میں نے یہاں پہنچنے سے پہلے ہی
اپنے دل میں یہ سوچا تھا کہ
میں نے یہاں پہنچنے سے پہلے ہی
اپنے دل میں یہ سوچا تھا کہ
میں نے یہاں پہنچنے سے پہلے ہی
اپنے دل میں یہ سوچا تھا کہ

Handwritten text in Arabic script, consisting of approximately 12 lines of cursive script.

Handwritten text in Arabic script, consisting of approximately 12 lines of cursive script.

Handwritten text in Arabic script, likely a religious or philosophical treatise. The text is written in a cursive style and spans the entire page.

Handwritten text in Arabic script, likely a religious or philosophical treatise. The text is written in a cursive style and spans the entire page.

Handwritten text in Arabic script, likely a continuation from the previous page. The text is written in a cursive style and appears to be a religious or philosophical treatise. It begins with a large initial letter, possibly 'ب' (Ba), and continues with several lines of text. The script is dense and fills most of the page.

Handwritten text in Arabic script, likely a continuation from the previous page. The text is written in a cursive style and appears to be a religious or philosophical treatise. It begins with a large initial letter, possibly 'ب' (Ba), and continues with several lines of text. The script is dense and fills most of the page.

Handwritten text in Arabic script, likely a religious or philosophical treatise. The text is written in a cursive style and spans the width of the page. It begins with a large initial letter, possibly 'ب' (Ba), and continues with several lines of text. The script is dense and well-proportioned, characteristic of classical Arabic calligraphy. The text appears to be a continuation of a discourse, with various words and phrases connected by fluid lines. The overall appearance is that of a well-preserved manuscript page.

Handwritten text in Arabic script, continuing the text from the previous page. The script is consistent with the previous page, showing a high level of calligraphic skill. The text is arranged in a single column, with clear margins. The ink is dark and the paper shows signs of age, with some slight discoloration and wear at the edges. The text is a continuation of the same subject matter, maintaining the same cursive style and structure. The overall impression is one of a carefully written and preserved historical document.

Handwritten text in a cursive script, likely a letter or document, written on the left page of an open manuscript. The text is arranged in approximately 12 horizontal lines, flowing from right to left across the page. The ink is dark and the script is highly stylized and connected.

Handwritten text in a cursive script, likely a letter or document, written on the right page of an open manuscript. The text is arranged in approximately 12 horizontal lines, flowing from right to left across the page. The ink is dark and the script is highly stylized and connected.

Handwritten text in a cursive script, likely a historical document or letter. The text is written in a fluid, connected style across approximately 12 lines. Some characters appear to be in a different script or dialect, possibly including some Latin or Greek characters interspersed with the main script.

Handwritten text in a cursive script, likely a historical document or letter. The text is written in a fluid, connected style across approximately 12 lines. Some characters appear to be in a different script or dialect, possibly including some Latin or Greek characters interspersed with the main script.

乃心之... 寛弘七年十月廿八日遷新造一乘院

中宮同行啓

寛弘七年

左大臣通一 右大臣顯光 内大臣云季

前内大臣伊周正月廿八日薨世七

大納言通總 實資 梅察 檢大納言麻信

云任 皇太后宮大夫

權中納言俊賢 中納言隆家

權中納言行成 賴通

中納言時光 權中忠補

審議有國 懐平

兼高 正光 大藏 經房

實成 大七拾拾

賴定

左中將經房 奉

公信 經人位位內

友通

辰巳位上
十月廿八日辰三位
行幸元

少將海政 十一月廿五日
右中弁

兼經 辰巳位下

忠經

經人位位下
三月廿七日辰巳下

定賴

二月十六日卯元
三月廿日辰巳下

胡任

經人位位下
十一月廿五日

賴憲

十一月廿日
辰巳下

少將雅通

二月廿日
本工頭

通雅

辰巳下

好親

三月七日辰巳上

定賴

辰巳下

胡任

二月廿日卯元
辰巳下

經親

二月廿五日
元左馬頭

邦高親王

御在判

右以伏見殿邦高親王御筆之本書寫一授
畢

右此日記上下以有寫有純所持本書寫訖但
歸城出駕無餘日故倉卒令書寫也迨而
令校合可改廢字誤者也

寛文八年卯月下旬

安宣

右以戸川氏土佐守本令書寫者也尤謬誤
亦多之

寛文十一年陽月下旬

宗川



