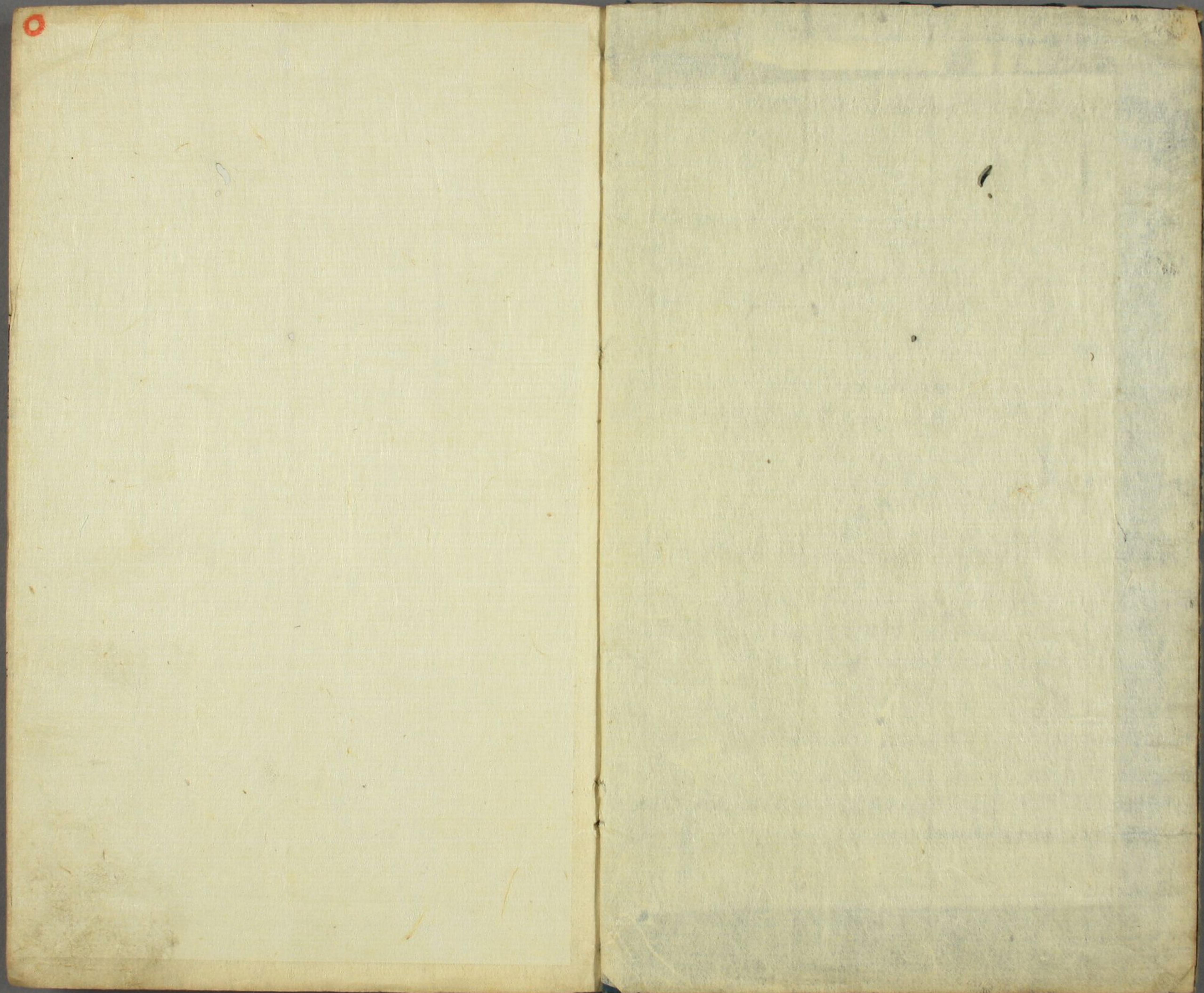




H. 5. 1  
H. 5. 1











































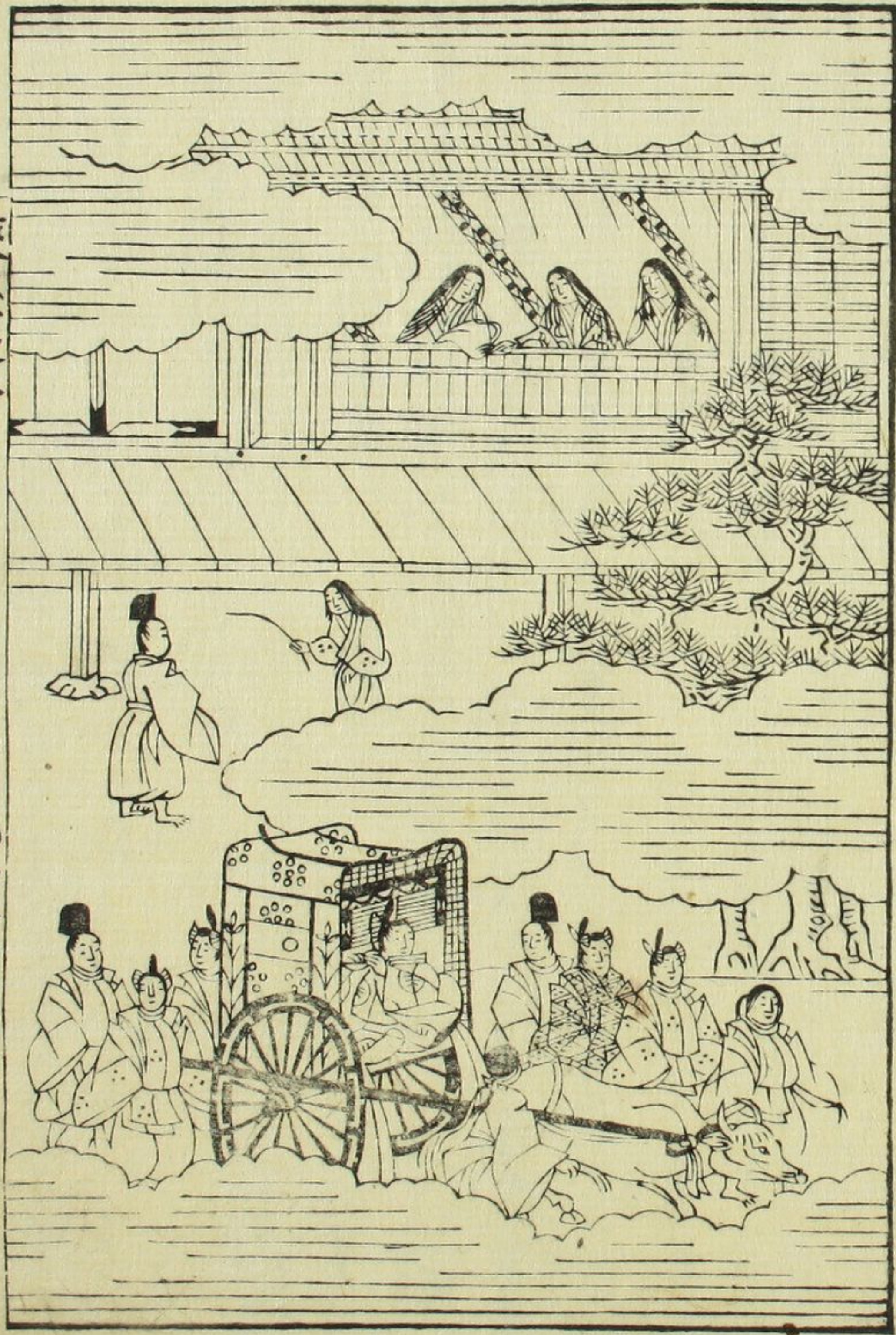












狭衣三三

〇十二

ちり好まざるはまの法をいふんちぞいといとことう  
 けり女房おふまゝいふちりたみゆる銭あまされ何事う車あま  
はまのていにおふまゝいふちりたみゆる銭あまされ何事う車あま  
 でいふちりたみゆる銭あまされ何事う車あま  
 ぢりたみゆる銭あまされ何事う車あま  
 ぢりたみゆる銭あまされ何事う車あま

柳三三

〇十二



Handwritten text in a cursive script, possibly a letter or a page from a manuscript. The text is written in a single column and includes several lines of dense, flowing characters. There are some small annotations or corrections in the text, such as "換本" (replacement copy) and "新" (new).

Handwritten text in a cursive script, similar to the page on the right. The text is written in a single column and includes several lines of dense, flowing characters. There are some small annotations or corrections in the text, such as "換本" (replacement copy) and "新" (new).





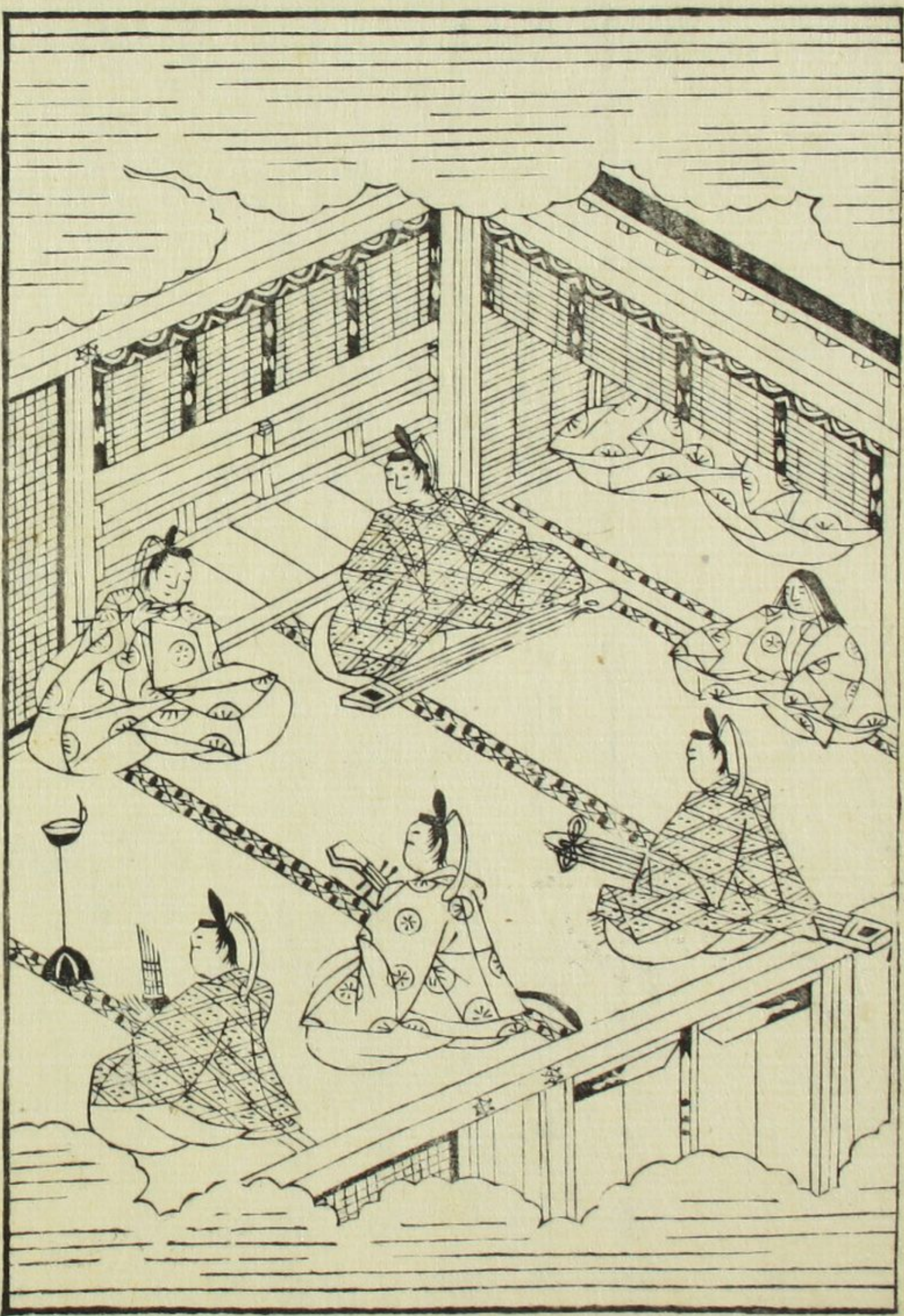












初定  
 乃終りぬる候に  
 色もたぬらうと  
 うあつらふま  
 海乃のまゝに  
 ぬののまゝに  
 候もひまに  
 ぬんぶに  
 そまのく  
 一先ゆらん  
 たるもゆるん

初定

初定



























































Handwritten text in a cursive script, likely a form of Japanese calligraphy. The text is arranged in approximately 15 horizontal lines. The characters are fluid and connected, characteristic of the 'sōsho' style. There are some faint markings and bleed-through from the reverse side of the page.

Handwritten text in a cursive script, likely a form of Japanese calligraphy. The text is arranged in approximately 15 horizontal lines. The characters are fluid and connected. There are several small annotations in the text, including the characters '源氏' (Genji) and '中' (Naka), which appear to be identifying specific parts of the text or providing commentary. The text is contained within a rectangular border.















































































あゝ海ぐるもあまのりきりあまのりきりあまのりきり  
あまのりきりあまのりきりあまのりきりあまのりきり  
あまのりきりあまのりきりあまのりきりあまのりきり  
あまのりきりあまのりきりあまのりきりあまのりきり  
あまのりきりあまのりきりあまのりきりあまのりきり  
あまのりきりあまのりきりあまのりきりあまのりきり  
あまのりきりあまのりきりあまのりきりあまのりきり  
あまのりきりあまのりきりあまのりきりあまのりきり  
あまのりきりあまのりきりあまのりきりあまのりきり  
あまのりきりあまのりきりあまのりきりあまのりきり

てきりあまのりきりあまのりきり  
あまのりきりあまのりきりあまのりきりあまのりきり  
あまのりきりあまのりきりあまのりきりあまのりきり  
あまのりきりあまのりきりあまのりきりあまのりきり  
あまのりきりあまのりきりあまのりきりあまのりきり  
あまのりきりあまのりきりあまのりきりあまのりきり  
あまのりきりあまのりきりあまのりきりあまのりきり  
あまのりきりあまのりきりあまのりきりあまのりきり  
あまのりきりあまのりきりあまのりきりあまのりきり  
あまのりきりあまのりきりあまのりきりあまのりきり

狹衣卷第一 上終

八二二

八二二



一  
卷  
之  
上

五  
十  
一





