

Handwritten text in a cursive script, likely a letter or a page from a manuscript. The text is written in a fluid, connected style across approximately 12 lines.

Handwritten text in a cursive script, likely a letter or a page from a manuscript. The text is written in a fluid, connected style across approximately 12 lines.

と申すは十三年の事にては、
一、
二、
三、
四、
五、
六、
七、
八、
九、
十、

まゝに申すは、
一、
二、
三、
四、
五、
六、
七、
八、
九、
十、

Handwritten text in a cursive script, likely a form of shorthand or a specific dialect. The text is arranged in approximately 12 horizontal lines across the page. Some characters are written in red ink, possibly indicating corrections or specific markers. The script is dense and fluid, with many overlapping strokes.

Handwritten text in a cursive script, similar to the left page. It consists of about 12 horizontal lines. A small red mark is visible in the middle of the text. The handwriting is consistent with the left page, showing a high degree of fluidity and connectivity between characters.

成りしつゝもてふふこゝろからちぬるが
を物いひつゝもて大納言のつれづれに
好くもつゝもて一語を例のつれづれに
しつゝもつゝもて今もつゝもつゝもつゝも
うちのつゝもつゝもつゝもつゝもつゝも
らにしつゝもつゝもつゝもつゝもつゝも
一語を例のつれづれに

木あつゝもつゝもつゝもつゝもつゝも
ふつゝもつゝもつゝもつゝもつゝもつゝも

かゝつゝもつゝもつゝもつゝもつゝも
にせつゝもつゝもつゝもつゝもつゝも
つゝもつゝもつゝもつゝもつゝもつゝも
んつゝもつゝもつゝもつゝもつゝも

つゝもつゝもつゝもつゝもつゝもつゝも
やうつゝもつゝもつゝもつゝもつゝも
神もつゝもつゝもつゝもつゝもつゝも
つゝもつゝもつゝもつゝもつゝもつゝも
あつゝもつゝもつゝもつゝもつゝも

Handwritten text in a cursive script, likely a form of Arabic or Persian. The text is arranged in approximately 12 horizontal lines across the page.

Handwritten text in a cursive script, likely a form of Arabic or Persian. The text is arranged in approximately 12 horizontal lines across the page.

Handwritten text in a cursive script, likely a form of Arabic or Persian calligraphy, consisting of approximately 12 lines of text.

Handwritten text in a cursive script, likely a form of Arabic or Persian calligraphy, consisting of approximately 12 lines of text.

Handwritten text in a cursive script, likely a form of Arabic or Persian calligraphy, written on the left page of an open manuscript. The text is arranged in approximately 12 horizontal lines, flowing from right to left. The ink is dark and the script is highly stylized and fluid.

Handwritten text in a cursive script, likely a form of Arabic or Persian calligraphy, written on the right page of an open manuscript. The text is arranged in approximately 12 horizontal lines, flowing from right to left. The ink is dark and the script is highly stylized and fluid.

Handwritten text in cursive script, likely a letter or document. The text is written in black ink on aged paper. There are several lines of text, with some characters highlighted in red ink. The script is dense and flowing, characteristic of a cursive hand.

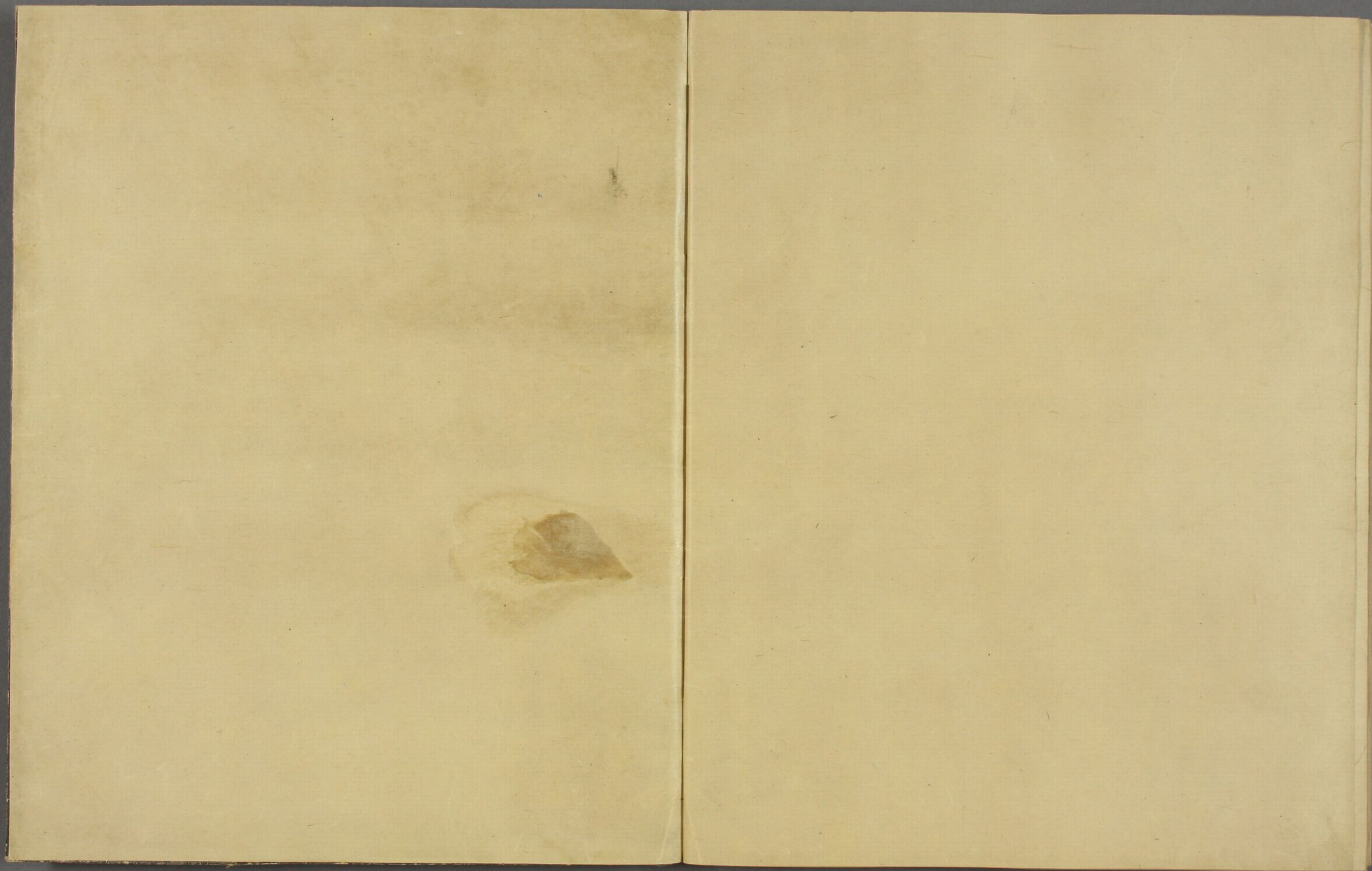
Handwritten text in cursive script, likely a letter or document. The text is written in black ink on aged paper. There are several lines of text, with some characters highlighted in red ink. The script is dense and flowing, characteristic of a cursive hand.

Handwritten text in a cursive script, likely a letter or a page from a manuscript. The text is written in a fluid, connected style across approximately 12 lines.

Handwritten text in a cursive script, likely a letter or a page from a manuscript. The text is written in a fluid, connected style across approximately 12 lines. A red mark is visible on the second line from the bottom.

Handwritten text in a cursive script, likely a personal letter or diary entry, spanning the right page of the notebook. The text is written in dark ink on aged, yellowish paper. It consists of approximately 12 lines of text, starting with a small mark that could be a date or a salutation. The handwriting is fluid and somewhat slanted to the right.

Handwritten text in a cursive script, likely a personal letter or diary entry, spanning the left page of the notebook. The text is written in dark ink on aged, yellowish paper. It consists of approximately 12 lines of text, continuing from the right page. The handwriting is consistent with the right page, showing a fluid, cursive style.





天竺山房

