

松

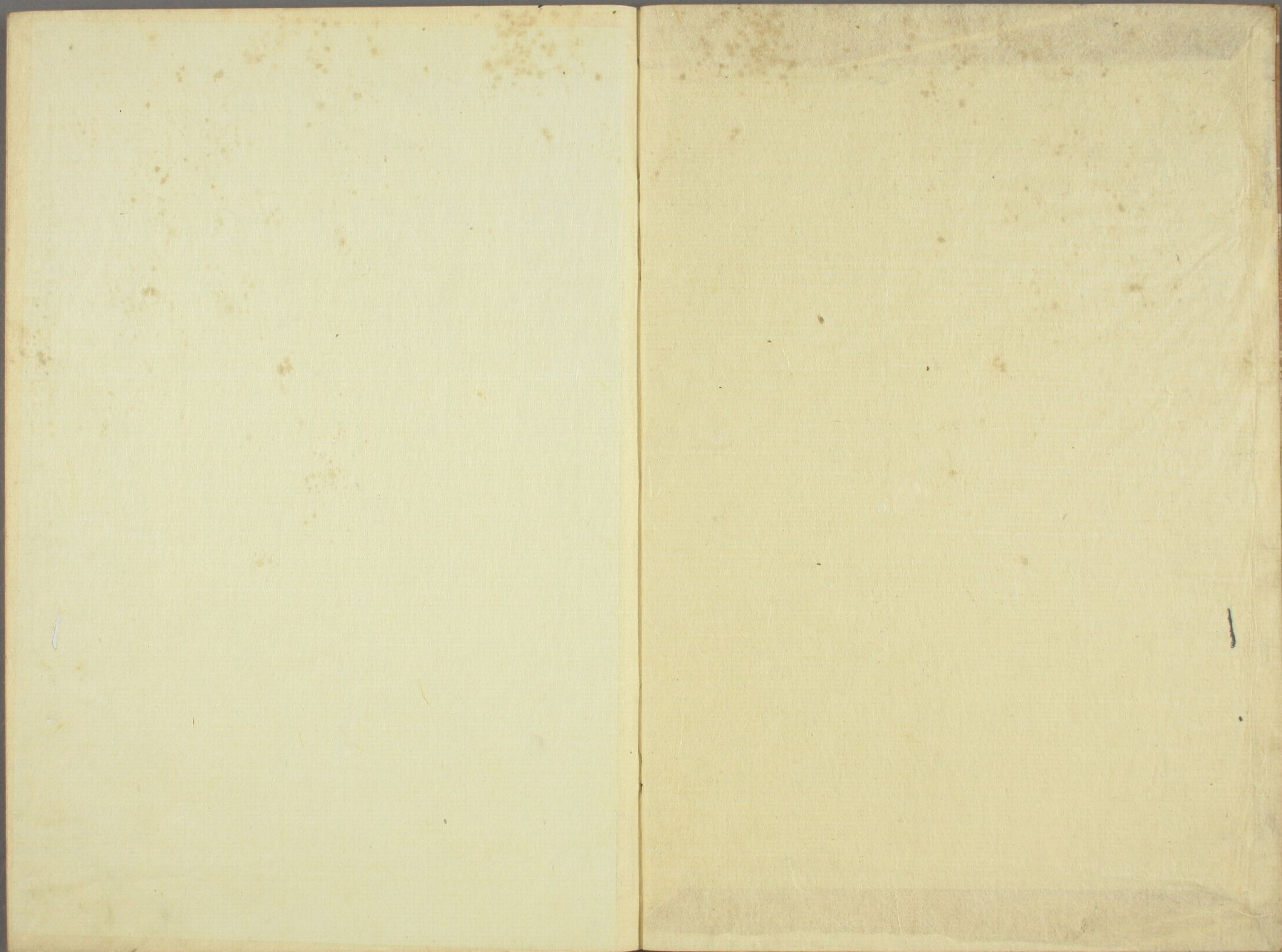
子

く

原

三  
回



























Handwritten text in cursive script, likely a letter or document. The text is written in black ink on aged paper. There are several red ink annotations, including small characters and lines, scattered throughout the text. The script is dense and flowing, characteristic of traditional East Asian calligraphy.

Handwritten text in cursive script, continuing from the previous page. The text is written in black ink on aged paper. There are several red ink annotations, including small characters and lines, scattered throughout the text. The script is dense and flowing, characteristic of traditional East Asian calligraphy.



































































まいたのん  
きんさん人ノ  
スルニコハラ  
子トタイカン  
シラストス

あてあんとくしーきんさんていしん

乃きんしーきんさんていしん

風あてしーきんさんていしん

りの初杖を一口上ひら

あてあんとくしーきんさんていしん

乃きんしーきんさんていしん

桜あてしーきんさんていしん

乃きんしーきんさんていしん

あてあんとくしーきんさんていしん

四月

部云まらりしーきんさんていしん

乃きんしーきんさんていしん

あてあんとくしーきんさんていしん

五月

あてあんとくしーきんさんていしん

乃きんしーきんさんていしん

あてあんとくしーきんさんていしん

乃きんしーきんさんていしん

あてあんとくしーきんさんていしん

乃きんしーきんさんていしん

あてあんとくしーきんさんていしん

乃きんしーきんさんていしん















Handwritten text in a cursive script, likely Arabic or Persian, with red ink used for decorative elements and some characters. The text is arranged in approximately 12 horizontal lines across the page.

Handwritten text in a cursive script, likely Arabic or Persian, with red ink used for decorative elements and some characters. The text is arranged in approximately 12 horizontal lines across the page.

西ノ  
定ノ  
サトイフ  
サタノ  
内波ト  
此ル  
思

Handwritten text in a cursive script, likely a form of Japanese calligraphy (Sōsho). The text is written across multiple lines on both pages of the notebook. Red ink annotations are scattered throughout, including small characters and symbols. The script is dense and fluid, characteristic of the Sōsho style.

ほ  
推ッ  
東ノ  
カタニ  
テオ  
アリ

Handwritten text in a cursive script, likely a form of shorthand or a specific dialect. The text is written in black ink on aged paper. Several characters are highlighted in red ink, possibly indicating specific phonetic or grammatical markers. The text is arranged in approximately 15 horizontal lines across the page.

Handwritten text in a cursive script, continuing from the previous page. The text is written in black ink on aged paper. Several characters are highlighted in red ink. The text is arranged in approximately 15 horizontal lines across the page.

Handwritten text in red ink, possibly a signature or a specific note, located at the bottom of the page.

Handwritten text in black ink, possibly a title or a specific note, located at the bottom of the page.

— 1 —  
— 2 —  
— 3 —  
— 4 —  
— 5 —  
— 6 —  
— 7 —  
— 8 —  
— 9 —  
— 10 —  
— 11 —  
— 12 —  
— 13 —  
— 14 —  
— 15 —  
— 16 —  
— 17 —  
— 18 —  
— 19 —  
— 20 —  
— 21 —  
— 22 —  
— 23 —  
— 24 —  
— 25 —  
— 26 —  
— 27 —  
— 28 —  
— 29 —  
— 30 —  
— 31 —  
— 32 —  
— 33 —  
— 34 —  
— 35 —  
— 36 —  
— 37 —  
— 38 —  
— 39 —  
— 40 —  
— 41 —  
— 42 —  
— 43 —  
— 44 —  
— 45 —  
— 46 —  
— 47 —  
— 48 —  
— 49 —  
— 50 —  
— 51 —  
— 52 —  
— 53 —  
— 54 —  
— 55 —  
— 56 —  
— 57 —  
— 58 —  
— 59 —  
— 60 —  
— 61 —  
— 62 —  
— 63 —  
— 64 —  
— 65 —  
— 66 —  
— 67 —  
— 68 —  
— 69 —  
— 70 —  
— 71 —  
— 72 —  
— 73 —  
— 74 —  
— 75 —  
— 76 —  
— 77 —  
— 78 —  
— 79 —  
— 80 —  
— 81 —  
— 82 —  
— 83 —  
— 84 —  
— 85 —  
— 86 —  
— 87 —  
— 88 —  
— 89 —  
— 90 —  
— 91 —  
— 92 —  
— 93 —  
— 94 —  
— 95 —  
— 96 —  
— 97 —  
— 98 —  
— 99 —  
— 100 —

イフ可也ヘシ  
イフ可也ヘシ

イフ可也

— 101 —  
— 102 —  
— 103 —  
— 104 —  
— 105 —  
— 106 —  
— 107 —  
— 108 —  
— 109 —  
— 110 —  
— 111 —  
— 112 —  
— 113 —  
— 114 —  
— 115 —  
— 116 —  
— 117 —  
— 118 —  
— 119 —  
— 120 —  
— 121 —  
— 122 —  
— 123 —  
— 124 —  
— 125 —  
— 126 —  
— 127 —  
— 128 —  
— 129 —  
— 130 —  
— 131 —  
— 132 —  
— 133 —  
— 134 —  
— 135 —  
— 136 —  
— 137 —  
— 138 —  
— 139 —  
— 140 —  
— 141 —  
— 142 —  
— 143 —  
— 144 —  
— 145 —  
— 146 —  
— 147 —  
— 148 —  
— 149 —  
— 150 —  
— 151 —  
— 152 —  
— 153 —  
— 154 —  
— 155 —  
— 156 —  
— 157 —  
— 158 —  
— 159 —  
— 160 —  
— 161 —  
— 162 —  
— 163 —  
— 164 —  
— 165 —  
— 166 —  
— 167 —  
— 168 —  
— 169 —  
— 170 —  
— 171 —  
— 172 —  
— 173 —  
— 174 —  
— 175 —  
— 176 —  
— 177 —  
— 178 —  
— 179 —  
— 180 —  
— 181 —  
— 182 —  
— 183 —  
— 184 —  
— 185 —  
— 186 —  
— 187 —  
— 188 —  
— 189 —  
— 190 —  
— 191 —  
— 192 —  
— 193 —  
— 194 —  
— 195 —  
— 196 —  
— 197 —  
— 198 —  
— 199 —  
— 200 —















Handwritten Japanese text in cursive style (sōsho) on the left page. The text is written in black ink with several red ink annotations (kuzushiji) interspersed throughout the lines. The characters are fluid and connected, typical of the cursive style.

Handwritten Japanese text in cursive style (sōsho) on the right page. The text continues from the left page. It features black ink characters with red ink annotations. A small red vertical stamp or mark is visible near the top of the page, and another red mark is present near the bottom left of the page.

Handwritten Japanese text in cursive style (sōsho) with red ink accents. The text is arranged in approximately 18 horizontal lines across the page. The characters are fluid and connected, typical of the cursive style. Red ink is used for accents, including small circles and dots, and for some characters. The text appears to be a form of calligraphy or a specific dialect of Japanese.

十  
九  
八  
七  
六  
五  
四  
三  
二  
一

Handwritten musical notation on two pages of a manuscript. The notation consists of a single melodic line on a four-line staff. The notes are written in a cursive, shorthand style characteristic of early manuscript notation. Red ink is used for various markings, including accents, slurs, and specific note heads. The notation is dense and fills most of the page area.

Handwritten text in a cursive script, likely a form of shorthand or a specific dialect. The text is written across two pages, with red ink used for accents and corrections. The script is dense and fluid, with many characters connected together. There are several red annotations, including small characters and arrows, scattered throughout the text. The overall appearance is that of a personal or working manuscript.





Handwritten text in a cursive script, likely a form of Arabic or Persian calligraphy. The text is written in black ink on aged paper, with several words or characters highlighted in red ink. The script is dense and flowing, characteristic of historical Islamic manuscripts. The text is arranged in approximately 15 horizontal lines across the page. Some red markings appear to be initials or specific characters used for emphasis or identification.

Handwritten text in a cursive script, likely a form of Arabic or Persian calligraphy. The text is written across two pages, with red ink used for decorative accents and some characters. The script is dense and flowing, characteristic of historical Islamic manuscripts. The text is arranged in approximately 15 horizontal lines across the page.

Handwritten text in a cursive script, likely Persian or Urdu, spanning two pages. The text is written in black ink with red ink used for decorative accents and some specific characters. The script is dense and flows across the lines of the manuscript.





Handwritten text in cursive script, likely a letter or document. The text is written in black ink on aged paper. It consists of approximately 15 lines of text. There are several small red markings or characters interspersed throughout the text, possibly indicating specific words or corrections. The script is fluid and characteristic of the Edo or Meiji periods.

Handwritten text in cursive script, continuing from the previous page. The text is written in black ink on aged paper. It consists of approximately 15 lines of text. There are several small red markings or characters interspersed throughout the text, possibly indicating specific words or corrections. The script is fluid and characteristic of the Edo or Meiji periods.



Handwritten text in cursive script, likely a letter or document. The text is written in black ink on aged paper. There are several red ink annotations, including small characters and lines, scattered throughout the text.

Handwritten text in cursive script, continuing from the previous page. The text is written in black ink on aged paper. There are several red ink annotations, including small characters and lines, scattered throughout the text.

Handwritten red text annotation, possibly a signature or a note, located at the bottom of the page.





Handwritten text in a cursive script, likely a form of Japanese calligraphy (Shodō). The text is written in black ink on aged paper, with several characters marked in red ink. The script is dense and flowing, characteristic of cursive styles. The text is arranged in approximately 20 horizontal lines across the page. The red markings appear to be accents or specific character indicators, possibly related to pronunciation or emphasis. The overall appearance is that of a historical manuscript or a practice piece.

Handwritten text in Arabic script, likely a religious or philosophical treatise. The text is written in a cursive style with some red ink used for emphasis or correction. The lines are arranged vertically on the page.

Handwritten text in Arabic script, continuing from the previous page. The text is written in a cursive style with some red ink used for emphasis or correction. The lines are arranged vertically on the page.



Handwritten text in Arabic script, likely a religious or philosophical treatise. The text is written in black ink on aged paper. It begins with a large initial letter 'ب' (Ba) and continues with several lines of dense script. There are several red ink annotations, including small letters and symbols, scattered throughout the text, possibly indicating specific words or phrases of interest.

Handwritten text in Arabic script, continuing from the previous page. The text is written in black ink on aged paper. It begins with a large initial letter 'ب' (Ba) and continues with several lines of dense script. There are several red ink annotations, including small letters and symbols, scattered throughout the text, possibly indicating specific words or phrases of interest.

Handwritten text in a cursive script, likely a form of Japanese calligraphy (Shodō). The text is written on two pages of aged paper. The characters are black ink with some red ink used for accents or corrections. The writing is dense and fills most of the page area. The script is highly stylized and fluid, characteristic of cursive calligraphy. The text is arranged in vertical columns, reading from right to left on each page. There are approximately 25 columns of text across both pages. The paper shows signs of age, including slight discoloration and some wear at the edges.

















Handwritten musical notation on the left page, consisting of a single melodic line with various rhythmic values and accidentals. The notation is written in a cursive style with some red ink markings.

Handwritten musical notation on the right page, continuing the single melodic line from the left page. It includes various rhythmic values and accidentals, with some red ink markings.









