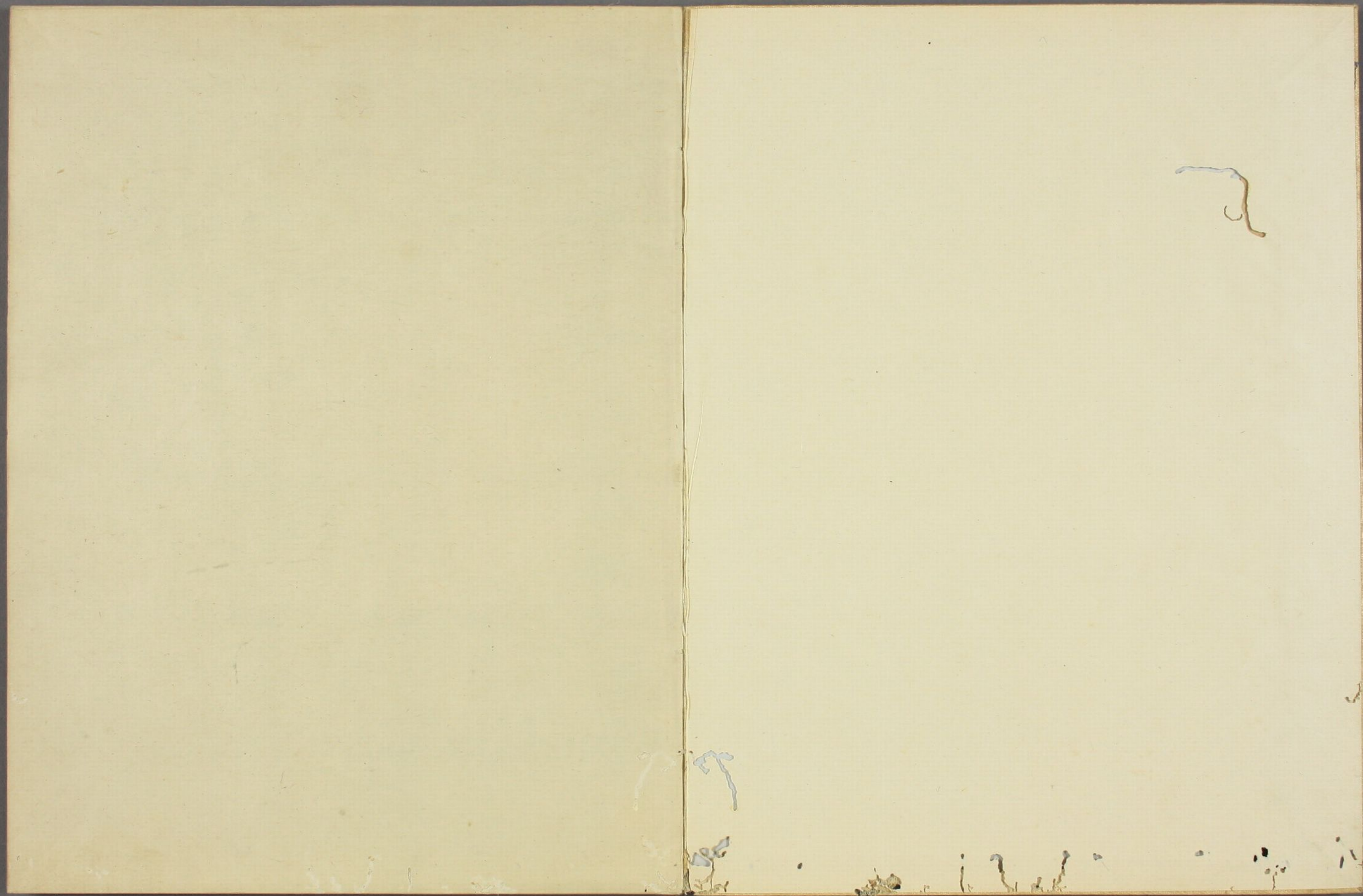




うたふた物語

上
下





Handwritten text in a cursive script, likely a form of Arabic or Persian calligraphy, consisting of approximately 12 lines of text.



Handwritten text in a cursive script, likely a letter or document, written on the left page of an open manuscript. The text is arranged in approximately 12 horizontal lines, starting from the top left and moving towards the bottom right. The script is highly stylized and fluid, characteristic of historical cursive handwriting.

Handwritten text in a cursive script, likely a letter or document, written on the right page of an open manuscript. The text is arranged in approximately 12 horizontal lines, starting from the top left and moving towards the bottom right. The script is highly stylized and fluid, characteristic of historical cursive handwriting.

بسم الله الرحمن الرحيم
الحمد لله رب العالمين
والصلاة والسلام على
سيدنا محمد وآله الطيبين
الطاهرين أجمعين
اللهم صل على محمد
وعلى آل محمد
الذين هم خير خلق
أبدى خلقك
صلى الله عليهم
وآلهم
وسلم

اللهم صل على محمد
وعلى آل محمد
الذين هم خير خلق
أبدى خلقك
صلى الله عليهم
وآلهم
وسلم
اللهم صل على محمد
وعلى آل محمد
الذين هم خير خلق
أبدى خلقك
صلى الله عليهم
وآلهم
وسلم

Handwritten text in a cursive script, likely a letter or document, consisting of approximately 12 lines of text.

Handwritten text in a cursive script, likely a letter or document, consisting of approximately 12 lines of text.

Handwritten text in a cursive script, likely a form of shorthand or a specific dialect. The text is arranged in approximately 12 horizontal lines across the page.

Handwritten text in a cursive script, likely a form of shorthand or a specific dialect. The text is arranged in approximately 12 horizontal lines across the page.

Handwritten text in a cursive script, likely a letter or document, consisting of approximately 10 lines of text.

Handwritten text in a cursive script, likely a letter or document, consisting of approximately 10 lines of text.

Handwritten text in Arabic script, consisting of approximately 12 lines of cursive script.

Handwritten text in Arabic script, consisting of approximately 12 lines of cursive script.

Handwritten text in a cursive script, likely a form of shorthand or a specific dialect. The text is arranged in approximately 12 horizontal lines across the page.

Handwritten text in a cursive script, likely a form of shorthand or a specific dialect. The text is arranged in approximately 12 horizontal lines across the page.

Handwritten text in a cursive script, likely a musical score or a list of notes, spanning the right page of the manuscript.

Handwritten text in a cursive script, likely a musical score or a list of notes, spanning the left page of the manuscript.

Handwritten text in a cursive script, likely a letter or document, written on aged paper. The text is arranged in approximately 15 lines across the page. The script is highly stylized and difficult to decipher without a key. The paper shows signs of age, including yellowing and some staining. The text is written in dark ink.

Handwritten text in a cursive script, likely a letter or a page from a manuscript. The text is written in a fluid, connected style across ten lines.

Handwritten text in a cursive script, likely a letter or a page from a manuscript. The text is written in a fluid, connected style across ten lines.

Handwritten text in a cursive script, likely a historical document or manuscript. The text is written in a dark ink on aged, yellowish paper. It consists of approximately 12 lines of text, starting with a large initial letter. The script is highly stylized and characteristic of the early modern period.

Handwritten text in a cursive script, likely a historical document or manuscript. The text is written in a dark ink on aged, yellowish paper. It consists of approximately 12 lines of text, starting with a large initial letter. The script is highly stylized and characteristic of the early modern period.

Handwritten text in a cursive script, likely a personal letter or diary entry. The text is written in a fluid, connected style across approximately 12 lines. The ink is dark and the paper shows signs of age.

Handwritten text in a cursive script, continuing from the previous page. The text is written in a fluid, connected style across approximately 12 lines. The ink is dark and the paper shows signs of age.

Handwritten text in Arabic script, consisting of approximately 12 lines of cursive script.

Handwritten text in Arabic script, consisting of approximately 12 lines of cursive script.

Handwritten text in a cursive script, likely a personal letter or diary entry, spanning the left page of the notebook.

Handwritten text in a cursive script, continuing from the left page or as a separate entry, spanning the right page of the notebook.

Handwritten text in a cursive script, likely a letter or document, written on the left page of an open manuscript. The text is arranged in approximately 12 horizontal lines, flowing from right to left across the page. The ink is dark and the script is highly stylized and connected.

Handwritten text in a cursive script, likely a letter or document, written on the right page of an open manuscript. The text is arranged in approximately 12 horizontal lines, flowing from right to left across the page. The ink is dark and the script is highly stylized and connected.

Handwritten text in a cursive script, likely a letter or a page from a manuscript. The text is written in a single column and appears to be a personal or official communication. The script is highly stylized and difficult to decipher without a key.

