

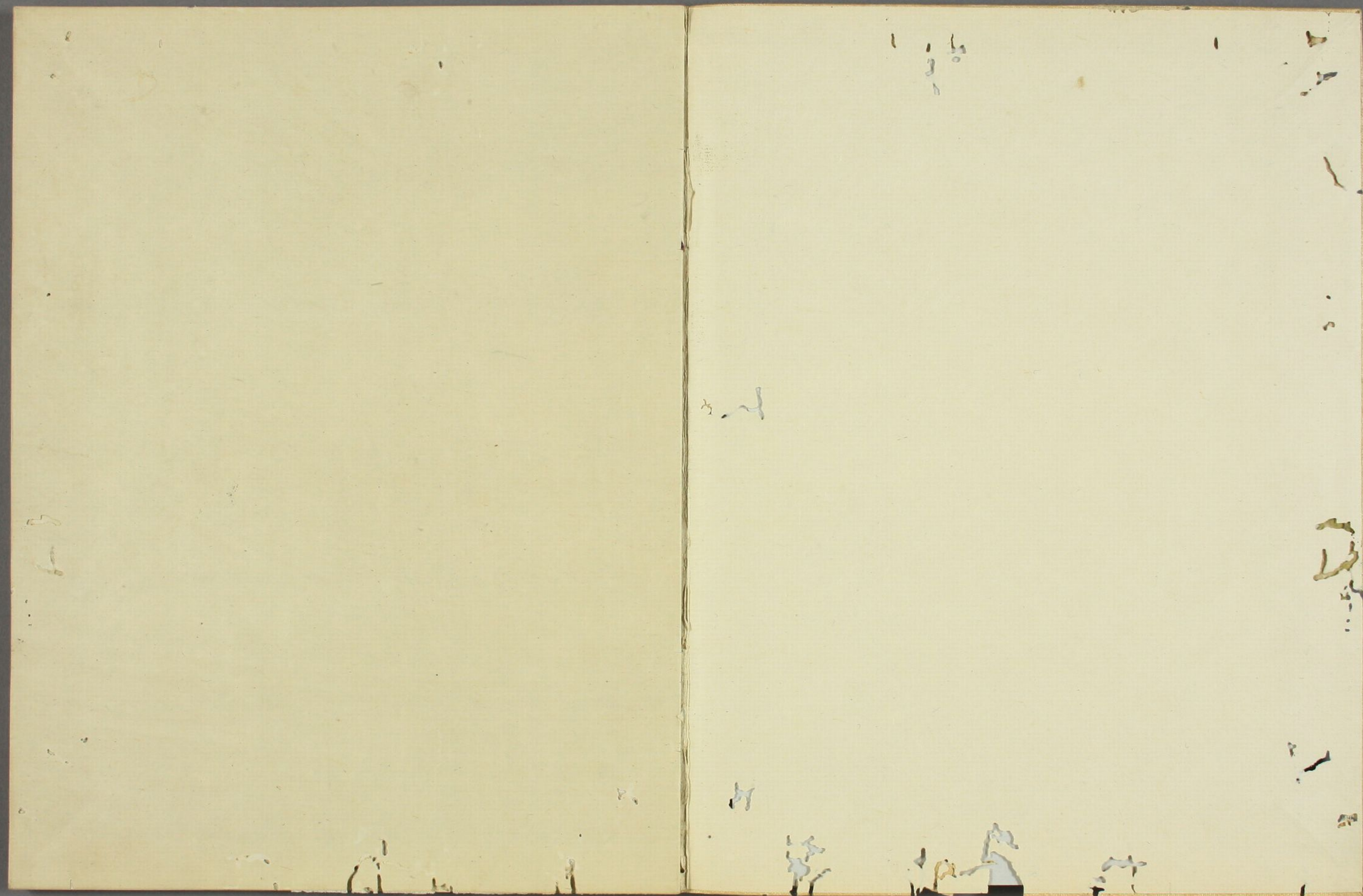


うはな物簿

世の













Handwritten text in a cursive script, likely a historical document or letter. The text is written in a dark ink on aged paper. It consists of approximately 12 lines of text, starting with a small initial mark on the left. The script is highly stylized and difficult to decipher without a key.

Handwritten text in a cursive script, continuing from the previous page. It consists of approximately 12 lines of text, starting with a small initial mark on the left. The script is highly stylized and difficult to decipher without a key.



Handwritten text in a cursive script, likely a letter or document, written on the left page of an open book. The text is arranged in approximately 12 horizontal lines, starting from the top left and moving towards the bottom right. The ink is dark, and the paper shows signs of age and wear.

Handwritten text in a cursive script, likely a letter or document, written on the right page of an open book. The text is arranged in approximately 12 horizontal lines, starting from the top left and moving towards the bottom right. The ink is dark, and the paper shows signs of age and wear.



بسم الله الرحمن الرحيم  
الحمد لله رب العالمين  
والصلاة والسلام على  
سيدنا محمد وآله الطيبين  
الطاهرين أجمعين  
اللهم صل على محمد  
وعلى آل محمد  
الذين هم خير البرية  
اللهم صل على محمد  
وعلى آل محمد  
الذين هم خير البرية  
اللهم صل على محمد  
وعلى آل محمد  
الذين هم خير البرية

اللهم صل على محمد  
وعلى آل محمد  
الذين هم خير البرية  
اللهم صل على محمد  
وعلى آل محمد  
الذين هم خير البرية  
اللهم صل على محمد  
وعلى آل محمد  
الذين هم خير البرية  
اللهم صل على محمد  
وعلى آل محمد  
الذين هم خير البرية  
اللهم صل على محمد  
وعلى آل محمد  
الذين هم خير البرية







Handwritten text in a cursive script, likely a letter or document, written on the left page of an open book. The text is arranged in approximately 10 horizontal lines, starting from the top left and moving towards the bottom right. The ink is dark and the paper shows signs of age.

Handwritten text in a cursive script, likely a letter or document, written on the right page of an open book. The text is arranged in approximately 10 horizontal lines, starting from the top left and moving towards the bottom right. The ink is dark and the paper shows signs of age.



Handwritten text in a cursive script, likely a letter or a page from a manuscript. The text is written in a fluid, connected style across ten lines.

Handwritten text in a cursive script, likely a letter or a page from a manuscript. The text is written in a fluid, connected style across ten lines.



Handwritten text in a cursive script, likely a letter or document. The text is written in a fluid, connected style across approximately 12 lines.

Handwritten text in a cursive script, likely a letter or document. The text is written in a fluid, connected style across approximately 12 lines.



Handwritten text in a cursive script, likely a letter or a page from a manuscript. The text is written in a fluid, connected style across approximately 12 lines.

Handwritten text in a cursive script, likely a letter or a page from a manuscript. The text is written in a fluid, connected style across approximately 12 lines.



























Handwritten text in a cursive script, likely a form of shorthand or a specific dialect. The text is arranged in approximately 12 horizontal lines across the page.

Handwritten text in a cursive script, likely a form of shorthand or a specific dialect. The text is arranged in approximately 12 horizontal lines across the page.



بسم الله الرحمن الرحيم  
الحمد لله رب العالمين  
والصلاة والسلام على  
سيدنا محمد وآله الطيبين  
الطاهرين أجمعين  
اللهم صل على محمد  
وعلى آل محمد  
الذين هم خير البرية  
اللهم صل على محمد  
وعلى آل محمد  
الذين هم خير البرية  
اللهم صل على محمد  
وعلى آل محمد  
الذين هم خير البرية

اللهم صل على محمد  
وعلى آل محمد  
الذين هم خير البرية  
اللهم صل على محمد  
وعلى آل محمد  
الذين هم خير البرية  
اللهم صل على محمد  
وعلى آل محمد  
الذين هم خير البرية  
اللهم صل على محمد  
وعلى آل محمد  
الذين هم خير البرية  
اللهم صل على محمد  
وعلى آل محمد  
الذين هم خير البرية















Handwritten text in a cursive script, likely a form of Urdu or Persian, consisting of approximately 12 lines of text.

Handwritten text in a cursive script, likely a form of Urdu or Persian, consisting of approximately 12 lines of text.



Handwritten text in a cursive script, likely a historical document or manuscript. The text is written in a dark ink on aged, yellowish paper. It consists of approximately 12 lines of text, with some lines starting with a large, decorative initial letter. The script is highly stylized and difficult to decipher without a key.

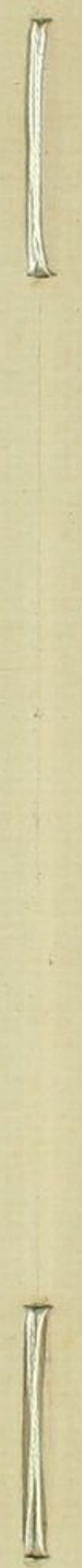
Handwritten text in a cursive script, likely a historical document or manuscript. The text is written in a dark ink on aged, yellowish paper. It consists of approximately 12 lines of text, with some lines starting with a large, decorative initial letter. The script is highly stylized and difficult to decipher without a key.







Handwritten text in a cursive script, likely a list or account. The text is written in a dark ink on aged paper. It begins with a long horizontal line, followed by several lines of text. The script is highly stylized and difficult to decipher. The text appears to be organized into several lines, with some lines starting with a small vertical mark or symbol. The overall appearance is that of a handwritten ledger or list.



Handwritten text in a cursive script, continuing from the top section. The text is written in a dark ink on aged paper. It begins with a long horizontal line, followed by several lines of text. The script is highly stylized and difficult to decipher. The text appears to be organized into several lines, with some lines starting with a small vertical mark or symbol. The overall appearance is that of a handwritten ledger or list.



قوله في قوله تعالى  
يا ايها الذين آمنوا  
انزلوا من كل ثوب  
عظيم اذا قمتم الي  
الصلوة فكلوا وشاربوا  
واشربوا وابتغوا  
الزينة وادخلوا  
الجامع من قبل  
الباب الا للذين  
اتوا من غير  
الباب فليدخلوا  
من حيث يريدون  
ولم يفتوا في  
الصلوة فكلوا وشاربوا  
واشربوا وابتغوا  
الزينة وادخلوا  
الجامع من قبل  
الباب الا للذين  
اتوا من غير  
الباب فليدخلوا  
من حيث يريدون  
ولم يفتوا في

الصلوة فكلوا وشاربوا  
واشربوا وابتغوا  
الزينة وادخلوا  
الجامع من قبل  
الباب الا للذين  
اتوا من غير  
الباب فليدخلوا  
من حيث يريدون  
ولم يفتوا في  
الصلوة فكلوا وشاربوا  
واشربوا وابتغوا  
الزينة وادخلوا  
الجامع من قبل  
الباب الا للذين  
اتوا من غير  
الباب فليدخلوا  
من حيث يريدون  
ولم يفتوا في  
الصلوة فكلوا وشاربوا  
واشربوا وابتغوا  
الزينة وادخلوا  
الجامع من قبل  
الباب الا للذين  
اتوا من غير  
الباب فليدخلوا  
من حيث يريدون  
ولم يفتوا في



Handwritten musical notation on the left page, consisting of a single staff with a treble clef and a key signature of one flat. The notation includes various rhythmic values and rests, with some notes marked with 'x' or 'y' above them. The piece concludes with a double bar line.

Handwritten musical notation on the right page, consisting of a single staff with a treble clef and a key signature of one flat. The notation includes various rhythmic values and rests, with some notes marked with 'x' or 'y' above them. The piece concludes with a double bar line.



Handwritten text in a cursive script, likely a letter or document, written on the left page of an open notebook. The text is arranged in approximately 12 horizontal lines, starting from the top left and moving towards the bottom right. The ink is dark, and the paper shows some signs of age and wear.

Handwritten text in a cursive script, likely a letter or document, written on the right page of an open notebook. The text is arranged in approximately 12 horizontal lines, starting from the top left and moving towards the bottom right. The ink is dark, and the paper shows some signs of age and wear.







Handwritten text in a cursive script, likely a letter or a page from a manuscript. The text is written in a fluid, connected style across several lines.

Handwritten text in a cursive script, continuing from the previous page. The text is written in a fluid, connected style across several lines.



Handwritten text in a cursive script, likely a historical document or manuscript. The text is written in a dark ink on aged, yellowish paper. It consists of approximately 14 lines of text, starting with a large initial letter 'S' and ending with a period. The script is highly stylized and characteristic of the 17th or 18th century.

Handwritten text in a cursive script, likely a historical document or manuscript. The text is written in a dark ink on aged, yellowish paper. It consists of approximately 14 lines of text, starting with a large initial letter 'S' and ending with a period. The script is highly stylized and characteristic of the 17th or 18th century.



Handwritten text in Arabic script, consisting of approximately 12 lines of cursive writing.

Handwritten text in Arabic script, consisting of approximately 12 lines of cursive writing.



Handwritten text in a cursive script, likely a letter or a page from a manuscript. The text is written in a fluid, connected style across several lines.

Handwritten text in a cursive script, likely a letter or a page from a manuscript. The text is written in a fluid, connected style across several lines.



Handwritten text in a cursive script, likely a letter or a page from a manuscript. The text is written in a fluid, connected style across several lines.

Handwritten text in a cursive script, continuing from the previous page. The text is written in a fluid, connected style across several lines.



Handwritten text in a cursive script, likely a letter or a page from a manuscript. The text is written in a fluid, connected style across approximately 12 lines.

Handwritten text in a cursive script, continuing from the previous page. The text is written in a fluid, connected style across approximately 12 lines.



Handwritten text in a cursive script, likely a letter or a page from a manuscript. The text is written in a fluid, connected style across approximately 12 lines.

Handwritten text in a cursive script, continuing from the previous page. The text is written in a fluid, connected style across approximately 12 lines.



Handwritten text in a cursive script, likely a historical document or letter. The text is written in a dark ink on aged paper. The script is highly stylized and difficult to decipher without a key. The text appears to be a single paragraph or a short letter.

Handwritten text in a cursive script, likely a historical document or letter. The text is written in a dark ink on aged paper. The script is highly stylized and difficult to decipher without a key. The text appears to be a single paragraph or a short letter.



Handwritten text in a cursive script, likely a form of Urdu or Persian, consisting of approximately 12 lines of text.

Handwritten text in a cursive script, likely a form of Urdu or Persian, consisting of approximately 12 lines of text.











Handwritten text in a cursive script, likely a form of Urdu or Persian, consisting of approximately 12 lines of text.

Handwritten text in a cursive script, likely a form of Urdu or Persian, consisting of approximately 12 lines of text.



Handwritten text in a cursive script, likely a form of shorthand or a specific dialect. The text is arranged in approximately 12 horizontal lines across the page.

Handwritten text in a cursive script, likely a form of shorthand or a specific dialect. The text is arranged in approximately 12 horizontal lines across the page.







Handwritten text in a cursive script, likely a letter or document, written on the left page of an open manuscript. The text is arranged in approximately 10 horizontal lines, starting from the top left and moving downwards. The script is highly stylized and fluid, characteristic of historical cursive handwriting.

Handwritten text in a cursive script, likely a letter or document, written on the right page of an open manuscript. The text is arranged in approximately 10 horizontal lines, starting from the top left of the page and moving downwards. The script is highly stylized and fluid, characteristic of historical cursive handwriting.



















Handwritten text in a cursive script, likely a letter or a page from a manuscript. The text is written in a dark ink on aged, yellowish paper. The script is highly stylized and difficult to decipher, but it appears to be a continuous block of text. The lines are somewhat irregular, suggesting a handwritten style. The text is arranged in approximately 10 lines across the page.

Handwritten text in a cursive script, continuing from the previous page. The text is written in a dark ink on aged, yellowish paper. The script is highly stylized and difficult to decipher, but it appears to be a continuous block of text. The lines are somewhat irregular, suggesting a handwritten style. The text is arranged in approximately 10 lines across the page.



Handwritten text in a cursive script, likely a historical document or manuscript. The text is written on a single page of aged paper and is arranged in approximately 11 lines. The script is highly stylized and difficult to decipher without a key, but it appears to be a form of shorthand or a specific dialect of a historical language. The ink is dark and the paper shows signs of age, including some staining and wear at the top edge.



