

尊海  
真光院  
仁初寺  
啟

























Handwritten text in cursive script, likely a letter or document. The text is dense and fills most of the page.

Handwritten text in cursive script, likely a letter or document. The text is dense and fills most of the page.







Handwritten text in Arabic script, likely a religious or historical document. The text is written in a cursive style and spans the entire width of the page.

Handwritten text in Arabic script, continuing from the previous page. The text is written in a cursive style and spans the entire width of the page.



Handwritten text in Arabic script, likely a religious or philosophical treatise. The text is written in a cursive style and spans the entire page.

Handwritten text in Arabic script, continuing the text from the previous page. The text is written in a cursive style and spans the entire page.



Handwritten text in a cursive script, likely a letter or document, covering the left page of the manuscript.

Handwritten text in a cursive script, likely a letter or document, covering the right page of the manuscript.



Handwritten text in Arabic script, likely a religious or historical document. The text is written in a cursive style and spans the entire page.

Handwritten text in Arabic script, likely a religious or historical document. The text is written in a cursive style and spans the entire page.



Handwritten text in a cursive script, likely a historical document or letter. The text is written in a dark ink on aged, yellowish paper. It consists of approximately 15 lines of text, starting with a large initial letter 'S' and ending with a period. The script is highly stylized and difficult to decipher without a key.

Handwritten text in a cursive script, continuing from the previous page. It consists of approximately 15 lines of text, starting with a large initial letter 'S' and ending with a period. The script is highly stylized and difficult to decipher without a key.



Handwritten text in a cursive script, likely a personal letter or diary entry. The text is written in a fluid, connected style across approximately 12 lines. The ink is dark and the paper shows signs of age.

Handwritten text in a cursive script, continuing from the previous page. The text is written in a fluid, connected style across approximately 12 lines. The ink is dark and the paper shows signs of age.



Handwritten text in cursive script, likely a letter or document, written vertically on the left page.

Handwritten text in cursive script, likely a letter or document, written vertically on the right page.



Handwritten text in a cursive script, likely a letter or document, covering the left page.

Handwritten text in a cursive script, likely a letter or document, covering the right page.



Handwritten text in a cursive script, likely a letter or document, written on the left page of an open manuscript. The text is dense and fills most of the page.

Handwritten text in a cursive script, likely a letter or document, written on the right page of an open manuscript. The text is dense and fills most of the page.







Handwritten text in Arabic script, likely a religious or historical document. The text is written in a cursive style and spans the width of the page.

Handwritten text in Arabic script, continuing from the previous page. The text is written in a cursive style and spans the width of the page.



此間  
一枚脱漏

Handwritten text in cursive script, likely a list or account, written vertically on the left page. The text is dense and fills most of the page area.

Handwritten text in cursive script, continuing from the left page, written vertically on the right page. The text is dense and fills most of the page area.



Handwritten text in Arabic script, likely a religious or philosophical treatise. The text is written in a cursive style and spans the entire page.

Handwritten text in Arabic script, continuing the text from the previous page. The text is written in a cursive style and spans the entire page.



Handwritten text in a cursive script, likely a letter or document. The text is written in a fluid, connected style across approximately 15 lines. The ink is dark and the paper shows signs of age.

Handwritten text in a cursive script, continuing from the previous page. The text is written in a fluid, connected style across approximately 15 lines. The ink is dark and the paper shows signs of age.



Handwritten text in a cursive script, likely a historical document or letter. The text is written in a dark ink on aged, yellowish paper. It consists of approximately 15 lines of text, starting with a large initial letter 'D' and ending with a large '2' at the bottom right. The script is highly stylized and difficult to decipher without a key.

Handwritten text in a cursive script, continuing from the previous page. It consists of approximately 15 lines of text, starting with a large initial letter 'D' and ending with a large '2' at the bottom right. The script is highly stylized and difficult to decipher without a key.



Handwritten text in cursive script, likely a letter or document. The text is dense and fills most of the page.

Handwritten text in cursive script, likely a letter or document. The text is dense and fills most of the page.







Handwritten text in cursive script, likely a letter or document, written on the left page of an open book. The text is dense and fills most of the page.

Handwritten text in cursive script, likely a letter or document, written on the right page of an open book. The text is dense and fills most of the page.



Handwritten text in a cursive script, likely a personal letter or diary entry. The text is written in a fluid, connected style across approximately 12 lines. The ink is dark and the paper shows signs of age.

Handwritten text in a cursive script, continuing from the previous page. The text is written in a fluid, connected style across approximately 12 lines. The ink is dark and the paper shows signs of age.



Handwritten text in Arabic script, likely a religious or philosophical treatise. The text is written in a cursive style and spans the width of the page. It begins with a large initial letter, possibly 'Bismillah' or a similar invocation. The script is dense and fills most of the page.

Handwritten text in Arabic script, continuing the text from the previous page. The script is consistent in style and density. It also begins with a large initial letter. The text is written in a cursive style and spans the width of the page.



Handwritten text in a cursive script, likely a personal letter or diary entry. The text is written in a fluid, connected style across approximately 12 lines. The ink is dark, and the paper shows signs of age and wear, including some staining and a small tear near the bottom center.

Handwritten text in a cursive script, continuing from the previous page. The text is written in a fluid, connected style across approximately 12 lines. The ink is dark, and the paper shows signs of age and wear, including some staining and a small tear near the bottom center.



Handwritten text in a cursive script, likely a letter or a personal note. The text is written in a fluid, connected style across approximately 12 lines. The characters are dense and difficult to decipher without a key, but they appear to be a form of shorthand or a highly stylized cursive.

Handwritten text in a cursive script, continuing from the previous page. The text is written in a fluid, connected style across approximately 12 lines. The characters are dense and difficult to decipher without a key, but they appear to be a form of shorthand or a highly stylized cursive.



Handwritten text in a cursive script, likely a letter or a page from a manuscript. The text is written in a fluid, connected style across approximately 12 lines.

Handwritten text in a cursive script, continuing from the previous page. The text is written in a fluid, connected style across approximately 12 lines.







Handwritten text in a cursive script, likely a letter or document. The text is written in a fluid, connected style across approximately 12 lines. The characters are dark and the paper shows signs of age.

Handwritten text in a cursive script, continuing from the previous page. The text is written in a fluid, connected style across approximately 12 lines. The characters are dark and the paper shows signs of age.



Handwritten text in Arabic script, likely a religious or philosophical treatise. The text is written in a cursive style and spans the width of the page.

Handwritten text in Arabic script, continuing the text from the previous page. It features similar cursive handwriting and covers the entire width of the page.



Handwritten text in Arabic script, likely a religious or philosophical treatise. The text is written in a cursive style and spans the entire page.

Handwritten text in Arabic script, continuing the text from the previous page. The text is written in a cursive style and spans the entire page.



Handwritten text in Arabic script, likely a religious or philosophical treatise. The text is written in a cursive style and spans the entire page.

Handwritten text in Arabic script, continuing the treatise from the previous page. The text is written in a cursive style and spans the entire page.















Handwritten text in a cursive script, likely a letter or document, written on the left page of an open manuscript. The text is dense and fills most of the page.

Handwritten text in a cursive script, likely a letter or document, written on the right page of an open manuscript. The text is dense and fills most of the page.



Handwritten text in a cursive script, likely a letter or a page from a manuscript. The text is written in a fluid, connected style across approximately 12 lines.

Handwritten text in a cursive script, continuing from the previous page. The text is written in a fluid, connected style across approximately 12 lines.



Handwritten text in cursive script, likely a letter or document, written on the right page of the manuscript.

此間一枚脱漏

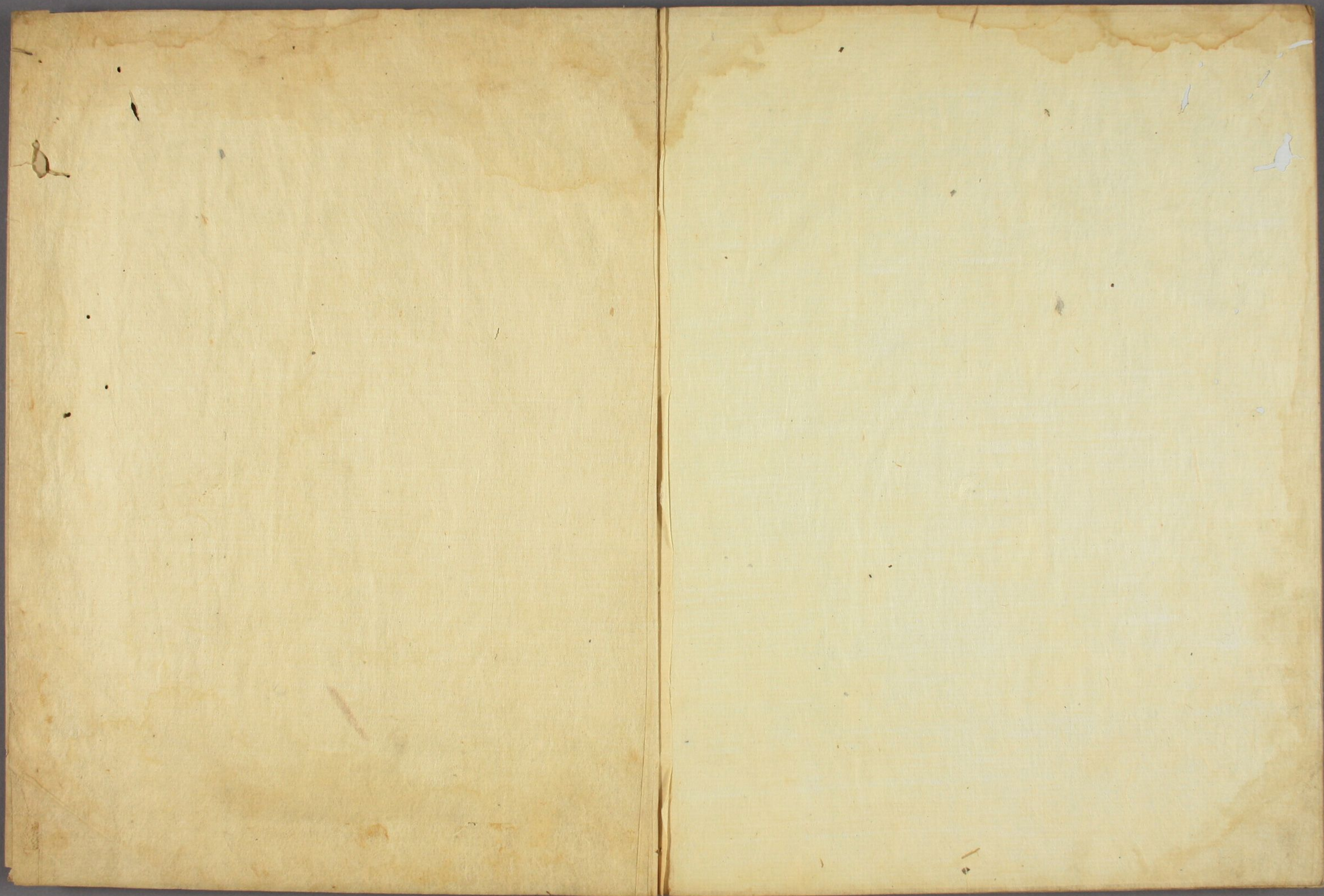
Handwritten text in cursive script, likely a letter or document, written on the left page of the manuscript.



1. The first part of the  
 manuscript is a list of  
 names and titles, written  
 in a cursive hand. The  
 names are arranged in  
 several columns, and the  
 titles are written below  
 them. The handwriting is  
 very fluid and elegant.

2. The second part of the  
 manuscript is a list of  
 names and titles, written  
 in a cursive hand. The  
 names are arranged in  
 several columns, and the  
 titles are written below  
 them. The handwriting is  
 very fluid and elegant.











仁壽寺古堂後身圖

正德八年信公撰

十志一圖