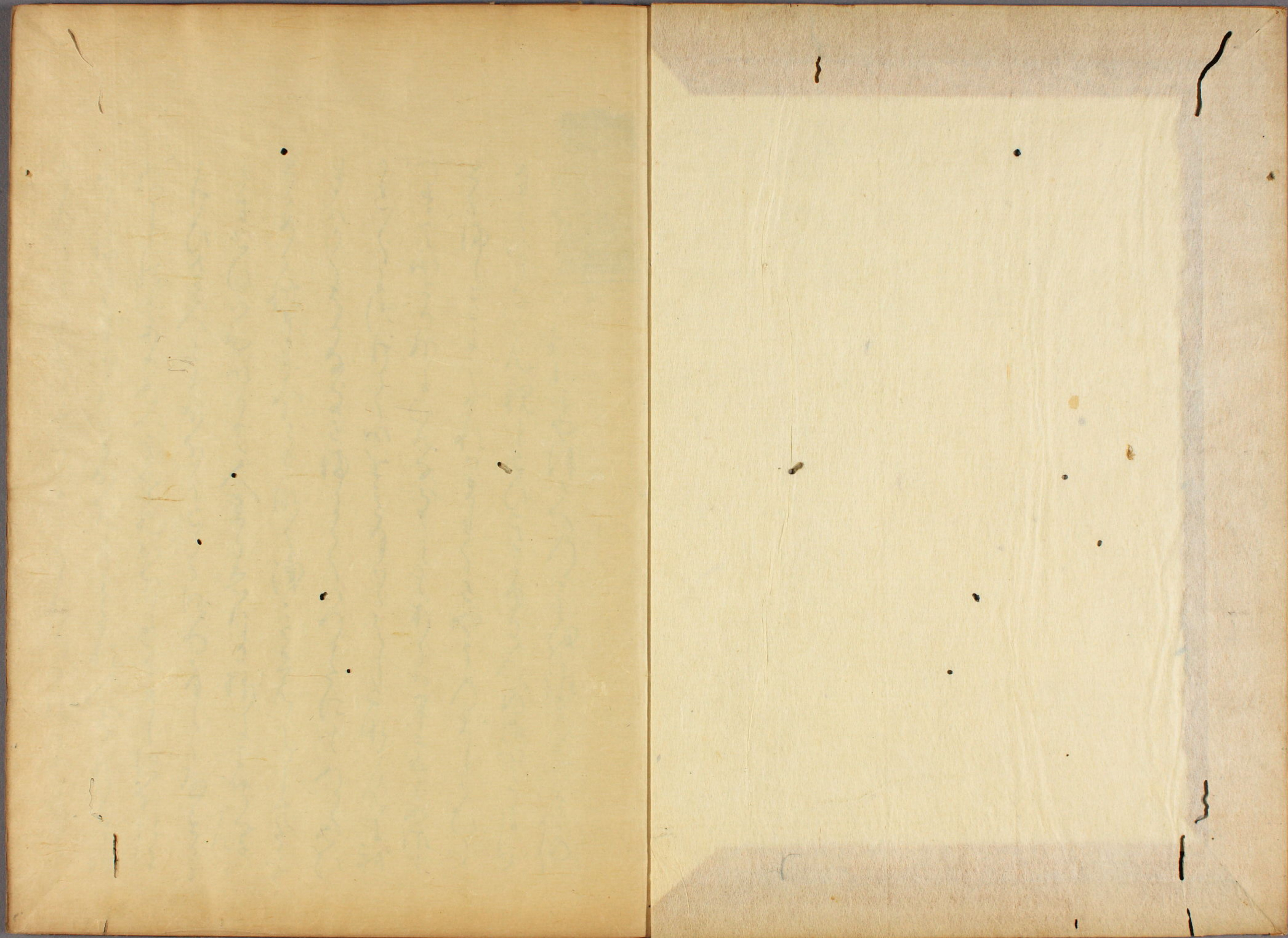


春
 げ
 の
 本
 玉
 子
 并
 心
 千
 代
 詞
 を
 名
 と
 せ
 り

伊地知文庫
 文庫20
 396
 11





伊地知氏吉冊

Handwritten text in a cursive script, likely a record or ledger, spanning multiple lines across the page.

Handwritten musical notation on the left page, consisting of a single staff with notes and rests. The notation is in a cursive style, typical of early manuscript notation. There are several red ink markings, possibly indicating specific notes or rests. The page is numbered '3' at the top right.

Handwritten musical notation on the right page, consisting of a single staff with notes and rests. The notation is in a cursive style, typical of early manuscript notation. There are several red ink markings, possibly indicating specific notes or rests. The page is numbered '4' at the top right.

Handwritten text in a cursive script, likely Persian or Urdu, spanning the left page of the manuscript. The text is written in black ink on aged, yellowish paper. It consists of approximately 14 lines of text, with some red ink used for decorative purposes, such as highlighting certain letters or words. The script is highly fluid and connected, characteristic of the Nasta'liq style.

Handwritten text in a cursive script, likely Persian or Urdu, spanning the right page of the manuscript. The text is written in black ink on aged, yellowish paper. It consists of approximately 14 lines of text, with some red ink used for decorative purposes, such as highlighting certain letters or words. The script is highly fluid and connected, characteristic of the Nasta'liq style.

Handwritten text in a cursive script, likely a historical document or manuscript. The text is written in a dark ink on aged, yellowish paper. It consists of approximately 15 lines of text, with some red ink used for initials or corrections. The script is highly stylized and difficult to decipher without a key.

Handwritten text in a cursive script, continuing from the previous page. The text is written in a dark ink on aged, yellowish paper. It consists of approximately 15 lines of text, with some red ink used for initials or corrections. The script is highly stylized and difficult to decipher without a key.

Handwritten text in a cursive script, likely a historical document or manuscript. The text is written in black ink on aged, yellowish paper. It consists of approximately 15 lines of text, with some red ink used for initials or corrections. The script is highly stylized and difficult to decipher without a key.

Handwritten text in a cursive script, likely a historical document or manuscript. The text is written in black ink on aged, yellowish paper. It consists of approximately 15 lines of text, with some red ink used for initials or corrections. The script is highly stylized and difficult to decipher without a key.

Handwritten text in a cursive script, likely Arabic or Persian, covering the left page of the manuscript. The text is arranged in approximately 12 horizontal lines, written from right to left. The script is highly stylized and fluid, with some red ink used for decorative purposes or to highlight specific characters. The paper shows signs of age and wear.

Handwritten text in a cursive script, likely Arabic or Persian, covering the right page of the manuscript. The text is arranged in approximately 12 horizontal lines, written from right to left. The script is highly stylized and fluid, with some red ink used for decorative purposes or to highlight specific characters. The paper shows signs of age and wear.

Handwritten text in a cursive script, likely a historical document or letter. The text is written in black ink on aged, yellowish paper. It consists of approximately 12 lines of text, with some red ink used for initials or corrections. The script is highly stylized and difficult to decipher without a key.

Handwritten text in a cursive script, likely a historical document or letter. The text is written in black ink on aged, yellowish paper. It consists of approximately 12 lines of text, with some red ink used for initials or corrections. The script is highly stylized and difficult to decipher without a key.

Handwritten text in a cursive script, likely a form of Arabic or Persian. The text is arranged in approximately 12 horizontal lines. Several characters are highlighted in red ink, possibly indicating specific words or initials. The script is dense and fluid, with many loops and flourishes.

Handwritten text in a cursive script, likely a form of Arabic or Persian. The text is arranged in approximately 12 horizontal lines. Several characters are highlighted in red ink, possibly indicating specific words or initials. The script is dense and fluid, with many loops and flourishes.

Handwritten text in a cursive script, likely a historical document or manuscript. The text is written in black ink on aged, yellowish paper. It consists of approximately 15 lines of text, with some red ink used for initials or corrections. The script is dense and flowing, characteristic of early modern cursive.

Handwritten text in a cursive script, continuing from the previous page. The text is written in black ink on aged, yellowish paper. It consists of approximately 15 lines of text, with some red ink used for initials or corrections. The script is dense and flowing, characteristic of early modern cursive.

Handwritten text in a cursive script, likely a historical document or letter. The text is written in black ink on aged paper and includes several red ink markings, possibly initials or corrections. The script is dense and fills most of the page.

Handwritten text in a cursive script, continuing from the previous page. The text is written in black ink on aged paper and includes several red ink markings, possibly initials or corrections. The script is dense and fills most of the page.

Handwritten text in a cursive script, likely a historical document or letter. The text is written in black ink on aged, yellowish paper. It consists of approximately 12 lines of text, with some red ink used for initials or corrections. The script is highly stylized and difficult to decipher without a key.

Handwritten text in a cursive script, continuing from the previous page. The text is written in black ink on aged, yellowish paper. It consists of approximately 12 lines of text, with some red ink used for initials or corrections. The script is highly stylized and difficult to decipher without a key.

Handwritten text in a cursive script, possibly a list or account, written on the right page of an open book. The text is written in black ink on aged, yellowish paper. It consists of several lines of text, with some words appearing to be in a different script or language than the others, possibly indicating a specific dialect or a mix of languages. The text is somewhat faded and difficult to read precisely, but appears to be organized into a list-like structure.



