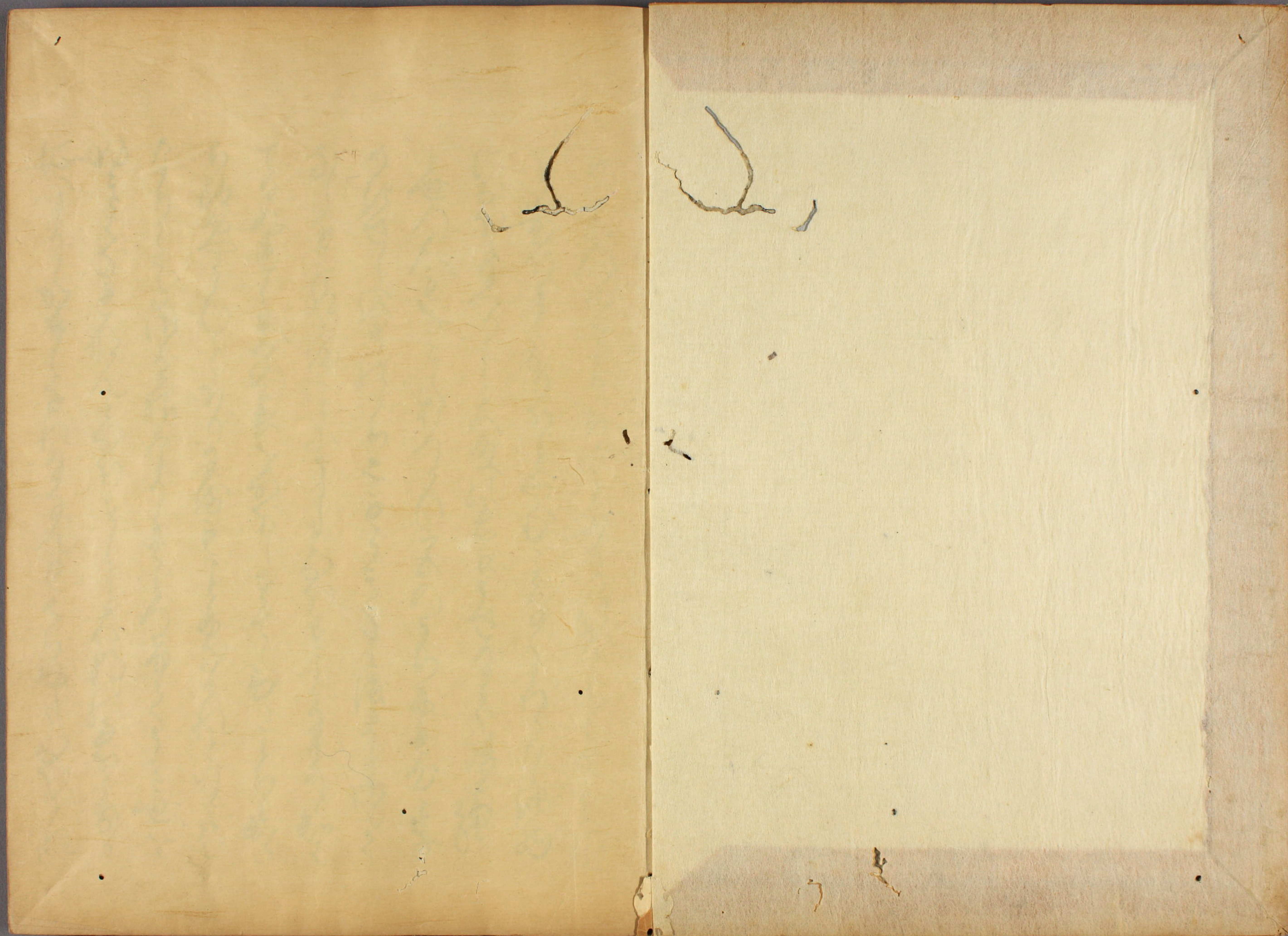




心
 本
 奇
 詞
 名
 考
 考
 考

伊地知文庫
 文庫20
 396
 4





伊地知氏書冊

Handwritten text in a cursive script, likely a form of Kuzushiji, written on a single page of aged paper. The text is arranged in approximately 12 horizontal lines, starting from the top left and moving towards the right. The characters are dark and fluid, with some red ink used for decorative accents or corrections. The paper shows signs of age, including slight discoloration and a small tear near the top edge.

Handwritten text in a cursive script, likely a historical document or manuscript. The text is written in black ink on aged paper and includes several lines of text, some with red ink markings (possibly initials or corrections). The script is dense and characteristic of early modern European handwriting.

Handwritten text in a cursive script, likely a historical document or manuscript. The text is written in black ink on aged paper and includes several lines of text, some with red ink markings (possibly initials or corrections). The script is dense and characteristic of early modern European handwriting.

Handwritten text in a cursive script, likely a historical document or manuscript. The text is written in black ink on aged paper and includes several lines of dense, flowing handwriting. There are some red ink markings or initials interspersed within the text.

Handwritten text in a cursive script, continuing from the previous page. The text is written in black ink on aged paper and includes several lines of dense, flowing handwriting. There are some red ink markings or initials interspersed within the text.

Handwritten text in a cursive script, likely a historical document or manuscript. The text is written in black ink on aged, yellowish paper. It consists of approximately 12 lines of text, with some lines starting with a red initial or marker. The script is highly stylized and difficult to decipher without a key.

Handwritten text in a cursive script, continuing from the previous page. The text is written in black ink on aged, yellowish paper. It consists of approximately 12 lines of text, with some lines starting with a red initial or marker. The script is highly stylized and difficult to decipher without a key.

Handwritten text in a cursive script, likely a historical document or manuscript. The text is written in black ink on aged, yellowish paper. It consists of approximately 12 lines of text, with some words or initials highlighted in red ink. The script is highly stylized and difficult to decipher without a key.

Handwritten text in a cursive script, likely a historical document or manuscript. The text is written in black ink on aged, yellowish paper. It consists of approximately 12 lines of text, with some words or initials highlighted in red ink. The script is highly stylized and difficult to decipher without a key.

Handwritten text in Arabic script, likely a religious or philosophical treatise. The text is written in a cursive style with some red ink used for emphasis or correction. The lines are arranged vertically on the page.

Handwritten text in Arabic script, continuing from the previous page. The text is written in a cursive style with some red ink used for emphasis or correction. The lines are arranged vertically on the page.

Handwritten text in a cursive script, likely a musical score or a list of names, spanning the left page. The text is written in black ink on aged paper. It consists of several lines of flowing, connected characters. There are some red markings, possibly indicating specific notes or corrections. The script is dense and fills most of the page.

Handwritten text in a cursive script, likely a musical score or a list of names, spanning the right page. The text is written in black ink on aged paper. It consists of several lines of flowing, connected characters. There are some red markings, possibly indicating specific notes or corrections. The script is dense and fills most of the page.

Handwritten text in a cursive script, likely a historical document or manuscript. The text is written in black ink on aged, yellowish paper. It consists of approximately 12 lines of text, with some red ink used for initials or corrections. The script is highly stylized and difficult to decipher without a key.

Handwritten text in a cursive script, continuing from the previous page. The text is written in black ink on aged, yellowish paper. It consists of approximately 12 lines of text, with some red ink used for initials or corrections. The script is highly stylized and difficult to decipher without a key.

Handwritten text in a cursive script, likely a historical document or manuscript. The text is written in black ink on aged paper. It begins with a large initial 'P' and contains several lines of text, including the word 'Purs' and 'Purs'.

Handwritten text in a cursive script, likely a historical document or manuscript. The text is written in black ink on aged paper. It begins with a large initial 'S' and contains several lines of text, including the word 'Sanc' and 'Sanc'.

Handwritten text in a cursive script, likely a historical document or manuscript. The text is written in black ink on aged, yellowish paper. It consists of approximately 15 lines of text, with some red ink used for initials or corrections. The script is highly stylized and difficult to decipher without a key.

Handwritten text in a cursive script, likely a historical document or manuscript. The text is written in black ink on aged, yellowish paper. It consists of approximately 15 lines of text, with some red ink used for initials or corrections. The script is highly stylized and difficult to decipher without a key.

Handwritten text in a cursive script, likely a historical document or manuscript. The text is written in black ink on aged paper and is organized into approximately 12 horizontal lines. Red ink is used for decorative initials and some specific characters throughout the text.

Handwritten text in a cursive script, continuing from the previous page. The text is written in black ink on aged paper and is organized into approximately 12 horizontal lines. Red ink is used for decorative initials and some specific characters throughout the text.

Handwritten text in a cursive script, likely a historical document or letter. The text is written in black ink on aged, yellowish paper. It begins with a decorative flourish on the left side. The script is dense and flowing, with some red ink used for initials or corrections. The text is arranged in approximately 12 lines across the page.

Handwritten text in a cursive script, continuing from the previous page. The text is written in black ink on aged, yellowish paper. It begins with a decorative flourish on the left side. The script is dense and flowing, with some red ink used for initials or corrections. The text is arranged in approximately 12 lines across the page.

Handwritten text in a cursive script, likely a historical document or letter. The text is written in black ink on aged paper and is organized into approximately 12 horizontal lines. Several characters are marked with red dots, possibly indicating specific points of interest or corrections. The script is dense and fluid, characteristic of historical cursive writing.

Handwritten text in a cursive script, continuing from the previous page. The text is written in black ink on aged paper and is organized into approximately 12 horizontal lines. Several characters are marked with red dots. The script is dense and fluid, characteristic of historical cursive writing. The text appears to be a continuation of the document on the left page.

Handwritten text in a cursive script, likely a musical score or a list of names. The text is written in black ink on aged paper. It consists of approximately 15 lines of text, with some red ink used for initials or accents. The script is highly stylized and difficult to decipher without a key.

Handwritten text in a cursive script, continuing from the previous page. It consists of approximately 15 lines of text, with some red ink used for initials or accents. The script is highly stylized and difficult to decipher without a key.

Handwritten text in a cursive script, likely a historical document or manuscript. The text is written in black ink on aged paper and is organized into approximately 12 horizontal lines. Several words are written in red ink, possibly indicating specific names, titles, or important terms. The script is highly stylized and characteristic of early modern European handwriting.

Handwritten text in a cursive script, continuing from the previous page. The text is written in black ink on aged paper and is organized into approximately 12 horizontal lines. Several words are written in red ink, possibly indicating specific names, titles, or important terms. The script is highly stylized and characteristic of early modern European handwriting.

Handwritten text in a cursive script, likely a historical document or letter. The text is written in black ink on aged paper and features several red ink markings, possibly initials or corrections. The script is dense and flowing, characteristic of early modern handwriting.

Handwritten text in a cursive script, continuing from the previous page. The text is written in black ink on aged paper and features several red ink markings, possibly initials or corrections. The script is dense and flowing, characteristic of early modern handwriting.

Handwritten text in a cursive script, likely a historical document or manuscript. The text is written in dark ink on aged, yellowish paper. It consists of approximately 12 lines of text, starting with a large initial letter 'S' on the first line. The script is highly stylized and characteristic of the 17th or 18th century.

Handwritten text in a cursive script, continuing from the previous page. The text is written in dark ink on aged, yellowish paper. It consists of approximately 12 lines of text, starting with a large initial letter 'S' on the first line. The script is highly stylized and characteristic of the 17th or 18th century.

In nomine dei Amen
Incipit liber primus
et in nomine dei Amen
Incipit liber secundus
et in nomine dei Amen
Incipit liber tertius
et in nomine dei Amen
Incipit liber quartus
et in nomine dei Amen
Incipit liber quintus
et in nomine dei Amen
Incipit liber sextus
et in nomine dei Amen
Incipit liber septimus
et in nomine dei Amen
Incipit liber octavus
et in nomine dei Amen
Incipit liber nonus
et in nomine dei Amen
Incipit liber decimus
et in nomine dei Amen

In nomine dei Amen
Incipit liber primus
et in nomine dei Amen
Incipit liber secundus
et in nomine dei Amen
Incipit liber tertius
et in nomine dei Amen
Incipit liber quartus
et in nomine dei Amen
Incipit liber quintus
et in nomine dei Amen
Incipit liber sextus
et in nomine dei Amen
Incipit liber septimus
et in nomine dei Amen
Incipit liber octavus
et in nomine dei Amen
Incipit liber nonus
et in nomine dei Amen
Incipit liber decimus
et in nomine dei Amen

Handwritten text in a cursive script, likely a historical document or manuscript. The text is written in black ink on aged, yellowish paper. It consists of approximately 12 lines of text, with some red ink used for initials or corrections. The script is highly stylized and difficult to decipher without a key.

Handwritten text in a cursive script, continuing from the previous page. The text is written in black ink on aged, yellowish paper. It consists of approximately 12 lines of text, with some red ink used for initials or corrections. The script is highly stylized and difficult to decipher without a key.

Handwritten text in a cursive script, likely a historical document or manuscript. The text is written in black ink on aged, yellowish paper. It consists of approximately 12 lines of text, with some red ink used for initials or corrections. The script is highly stylized and difficult to decipher without a key.

Handwritten text in a cursive script, likely a historical document or manuscript. The text is written in black ink on aged, yellowish paper. It consists of approximately 12 lines of text, with some red ink used for initials or corrections. The script is highly stylized and difficult to decipher without a key.

Handwritten text in a cursive script, likely a historical document or manuscript. The text is written in black ink on aged paper and is organized into several lines. The script is highly stylized and characteristic of the early modern period. The text is written in a cursive script, likely a historical document or manuscript. The text is written in black ink on aged paper and is organized into several lines. The script is highly stylized and characteristic of the early modern period.

Handwritten text in a cursive script, likely a historical document or manuscript. The text is written in black ink on aged paper and is organized into several lines. The script is highly stylized and characteristic of the early modern period. The text is written in a cursive script, likely a historical document or manuscript. The text is written in black ink on aged paper and is organized into several lines. The script is highly stylized and characteristic of the early modern period.

Handwritten text in a cursive script, likely a historical document or manuscript. The text is written in black ink on aged, yellowish paper. It consists of approximately 12 lines of text, with some red ink used for initials or corrections. The script is highly stylized and difficult to decipher without a key.

Handwritten text in a cursive script, continuing from the previous page. The text is written in black ink on aged, yellowish paper. It consists of approximately 12 lines of text, with some red ink used for initials or corrections. The script is highly stylized and difficult to decipher without a key.

Handwritten text in a cursive script, likely a historical document or manuscript. The text is written in black ink on aged paper and features several red ink initials or markers. The script is dense and flowing, characteristic of early modern handwriting.

Handwritten text in a cursive script, continuing from the previous page. The text is written in black ink on aged paper and features several red ink initials or markers. The script is dense and flowing, characteristic of early modern handwriting.

Handwritten text in a cursive script, likely a historical document or manuscript. The text is written in black ink on aged paper and includes several lines of text, some of which are underlined. The script is highly stylized and characteristic of the early modern period.

Handwritten text in a cursive script, likely a historical document or manuscript. The text is written in black ink on aged paper and includes several lines of text, some of which are underlined. The script is highly stylized and characteristic of the early modern period.

Handwritten text in a cursive script, likely a historical document or letter. The text is written in black ink on aged paper and includes several lines of text, some with red ink markings or initials.

Handwritten text in a cursive script, likely a historical document or letter. The text is written in black ink on aged paper and includes several lines of text, some with red ink markings or initials.

Handwritten text in a cursive script, likely a historical document or letter. The text is written in black ink on aged paper and is organized into approximately 12 lines. Several words are written in red ink, possibly indicating emphasis or specific names. The script is highly stylized and characteristic of the early modern period.

Handwritten text in a cursive script, continuing from the previous page. The text is written in black ink on aged paper and is organized into approximately 12 lines. Several words are written in red ink, possibly indicating emphasis or specific names. The script is highly stylized and characteristic of the early modern period.

Handwritten text in a cursive script, likely a historical document or manuscript. The text is written in black ink on aged paper and features several red ink initials or markers. The script is dense and fills most of the page.

Handwritten text in a cursive script, likely a historical document or manuscript. The text is written in black ink on aged paper and features several red ink initials or markers. The script is dense and fills most of the page.

Handwritten text in a cursive script, likely a historical document or manuscript. The text is written in black ink on aged, yellowish paper. It consists of approximately 12 lines of text, with some red ink used for initials or decorative elements. The script is highly stylized and difficult to decipher without a key.

Handwritten text in a cursive script, continuing from the previous page. The text is written in black ink on aged, yellowish paper. It consists of approximately 12 lines of text, with some red ink used for initials or decorative elements. The script is highly stylized and difficult to decipher without a key.

Handwritten text in a cursive script, likely a historical document or manuscript. The text is written in black ink on aged, yellowed paper. It consists of approximately 15 lines of text, with some red ink used for initials or corrections. The script is highly stylized and difficult to decipher without a key.

Handwritten text in a cursive script, continuing from the previous page. The text is written in black ink on aged, yellowed paper. It consists of approximately 15 lines of text, with some red ink used for initials or corrections. The script is highly stylized and difficult to decipher without a key.

Handwritten text in a cursive script, likely a historical document or manuscript. The text is written in black ink on aged, yellowish paper. It consists of approximately 12 lines of text, with some red ink used for initials or decorative elements. The script is highly stylized and difficult to decipher without a key.

Handwritten text in a cursive script, continuing from the previous page. The text is written in black ink on aged, yellowish paper. It consists of approximately 12 lines of text, with some red ink used for initials or decorative elements. The script is highly stylized and difficult to decipher without a key.

Handwritten text in a cursive script, likely a historical document or manuscript. The text is written in black ink on aged paper and includes several lines of text. Some characters are highlighted in red ink, possibly indicating specific names or dates. The script is dense and characteristic of early modern European handwriting.

Handwritten text in a cursive script, likely a historical document or manuscript. The text is written in black ink on aged paper and includes several lines of text. Some characters are highlighted in red ink, possibly indicating specific names or dates. The script is dense and characteristic of early modern European handwriting.

Handwritten text in a cursive script, likely a historical document or letter. The text is written in black ink on aged, yellowed paper. It consists of approximately 12 lines of text, with some words underlined in red ink. The script is highly stylized and difficult to decipher without a key.

Handwritten text in a cursive script, continuing from the previous page. The text is written in black ink on aged, yellowed paper. It consists of approximately 12 lines of text, with some words underlined in red ink. The script is highly stylized and difficult to decipher without a key.

Handwritten text in a cursive script, likely a historical document or manuscript. The text is written in black ink on aged paper and is organized into approximately 12 horizontal lines. Several characters are highlighted with red ink, possibly indicating specific names, dates, or important terms. The script is dense and characteristic of early modern European handwriting.

Handwritten text in a cursive script, continuing from the previous page. The text is written in black ink on aged paper and is organized into approximately 12 horizontal lines. Several characters are highlighted with red ink, possibly indicating specific names, dates, or important terms. The script is dense and characteristic of early modern European handwriting.

Handwritten text in a cursive script, likely a historical document or manuscript. The text is written in black ink on aged, yellowish paper. It consists of approximately 12 lines of text, with some red ink used for initials or decorative elements. The script is highly stylized and difficult to decipher without a key.

Handwritten text in a cursive script, continuing from the previous page. The text is written in black ink on aged, yellowish paper. It consists of approximately 12 lines of text, with some red ink used for initials or decorative elements. The script is highly stylized and difficult to decipher without a key.

Handwritten text in cursive script, likely a list or account. The text is written in black ink on aged paper. The first line begins with a large initial 'D'. The text is somewhat difficult to decipher due to the cursive style and some fading.

Handwritten text in cursive script, continuing from the previous page. It features several lines of text with some red ink markings, possibly indicating corrections or specific items. The script is consistent with the previous page.

Handwritten text in cursive script, continuing from the previous page. This section contains several lines of text, including what appears to be a signature or a final entry at the bottom right. The ink is black, and the paper shows signs of age.

Handwritten text in a cursive script, likely a historical document or manuscript. The text is written in black ink on aged paper and includes several lines of text. Some letters are written in red ink, possibly indicating initials or specific words. The script is highly stylized and characteristic of the early modern period.

Handwritten text in a cursive script, likely a historical document or manuscript. The text is written in black ink on aged paper and includes several lines of text. Some letters are written in red ink, possibly indicating initials or specific words. The script is highly stylized and characteristic of the early modern period.

Handwritten text in a cursive script, likely a historical document or letter. The text is written in black ink on aged paper. It begins with a red horizontal line. The script is dense and flowing, with many loops and flourishes. There are several red ink marks, possibly initials or corrections, scattered throughout the text. The text is arranged in approximately 12 lines.

Handwritten text in a cursive script, continuing from the previous page. The text is written in black ink on aged paper. It begins with a red horizontal line. The script is dense and flowing, with many loops and flourishes. There are several red ink marks, possibly initials or corrections, scattered throughout the text. The text is arranged in approximately 12 lines.

Handwritten text in a cursive script, likely a historical document or manuscript. The text is written in black ink on aged paper and features several red initials or markers. The script is dense and fills most of the page.

Handwritten text in a cursive script, likely a historical document or manuscript. The text is written in black ink on aged paper and features several red initials or markers. The script is dense and fills most of the page.

Handwritten text in a cursive script, likely a historical document or manuscript. The text is written in black ink on aged paper and includes several lines of text. There are some red markings or initials interspersed within the script.

Handwritten text in a cursive script, likely a historical document or manuscript. The text is written in black ink on aged paper and includes several lines of text. There are some red markings or initials interspersed within the script.

Handwritten text in a cursive script, likely a historical document or manuscript. The text is written in black ink on aged paper. There are several red ink annotations, including small characters and dots, scattered throughout the text. The script is dense and flowing, characteristic of early modern European cursive.

Handwritten text in a cursive script, continuing from the previous page. The text is written in black ink on aged paper. There are several red ink annotations, including small characters and dots, scattered throughout the text. The script is dense and flowing, characteristic of early modern European cursive.

Handwritten text in a cursive script, likely a historical document or manuscript. The text is written in black ink on aged paper and features several red ink markings, possibly initials or corrections. The script is dense and fills most of the page.

Handwritten text in a cursive script, continuing from the previous page. The text is written in black ink on aged paper and features several red ink markings, possibly initials or corrections. The script is dense and fills most of the page.

Handwritten text in a cursive script, likely a historical document or letter. The text is written in black ink on aged paper and includes several lines of text. Some words are written in red ink, possibly indicating emphasis or specific names. The script is highly stylized and difficult to decipher without a key.

Handwritten text in a cursive script, continuing from the previous page. The text is written in black ink on aged paper and includes several lines of text. Some words are written in red ink, possibly indicating emphasis or specific names. The script is highly stylized and difficult to decipher without a key.

Handwritten text in a cursive script, likely a historical document or letter. The text is written in black ink on aged paper and includes several lines of text. The script is highly stylized and difficult to decipher, but it appears to be a formal or official communication. The text is written in a cursive script, likely a historical document or letter. The text is written in black ink on aged paper and includes several lines of text. The script is highly stylized and difficult to decipher, but it appears to be a formal or official communication. The text is written in a cursive script, likely a historical document or letter. The text is written in black ink on aged paper and includes several lines of text. The script is highly stylized and difficult to decipher, but it appears to be a formal or official communication.

Handwritten text in a cursive script, likely a historical document or letter. The text is written in black ink on aged paper and includes several lines of text. The script is highly stylized and difficult to decipher, but it appears to be a formal or official communication. The text is written in a cursive script, likely a historical document or letter. The text is written in black ink on aged paper and includes several lines of text. The script is highly stylized and difficult to decipher, but it appears to be a formal or official communication. The text is written in a cursive script, likely a historical document or letter. The text is written in black ink on aged paper and includes several lines of text. The script is highly stylized and difficult to decipher, but it appears to be a formal or official communication.

Handwritten text in a cursive script, likely a musical score or a list of names. The text is written in black ink on aged paper. Several characters are marked with red dots, possibly indicating specific notes or corrections. The text is arranged in a single column, flowing from top to bottom.

Handwritten text in a cursive script, likely a musical score or a list of names. The text is written in black ink on aged paper. Several characters are marked with red dots, possibly indicating specific notes or corrections. The text is arranged in a single column, flowing from top to bottom.

Handwritten text in a cursive script, likely a musical score or a list of names. The text is written in black ink on aged paper. The script is highly stylized and difficult to decipher. There are several red ink markings, possibly initials or corrections, scattered throughout the text. The text is arranged in a single column on the page.

Handwritten text in a cursive script, likely a musical score or a list of names. The text is written in black ink on aged paper. The script is highly stylized and difficult to decipher. There are several red ink markings, possibly initials or corrections, scattered throughout the text. The text is arranged in a single column on the page.

Handwritten text in a cursive script, likely a musical score or a list of names. The text is written in black ink on aged paper. The script is highly stylized and difficult to decipher. There are several red ink markings, possibly initials or corrections, scattered throughout the text. The text is arranged in approximately 12 horizontal lines across the page.

Handwritten text in a cursive script, continuing from the previous page. The text is written in black ink on aged paper. The script is highly stylized and difficult to decipher. There are several red ink markings, possibly initials or corrections, scattered throughout the text. The text is arranged in approximately 12 horizontal lines across the page.

Handwritten text in a cursive script, likely a historical document or manuscript. The text is written in black ink on aged, yellowish paper. Several words are written in red ink, possibly indicating specific names or titles. The text is arranged in approximately 12 lines, starting from the top right and moving downwards. The script is highly stylized and difficult to decipher without a key.



