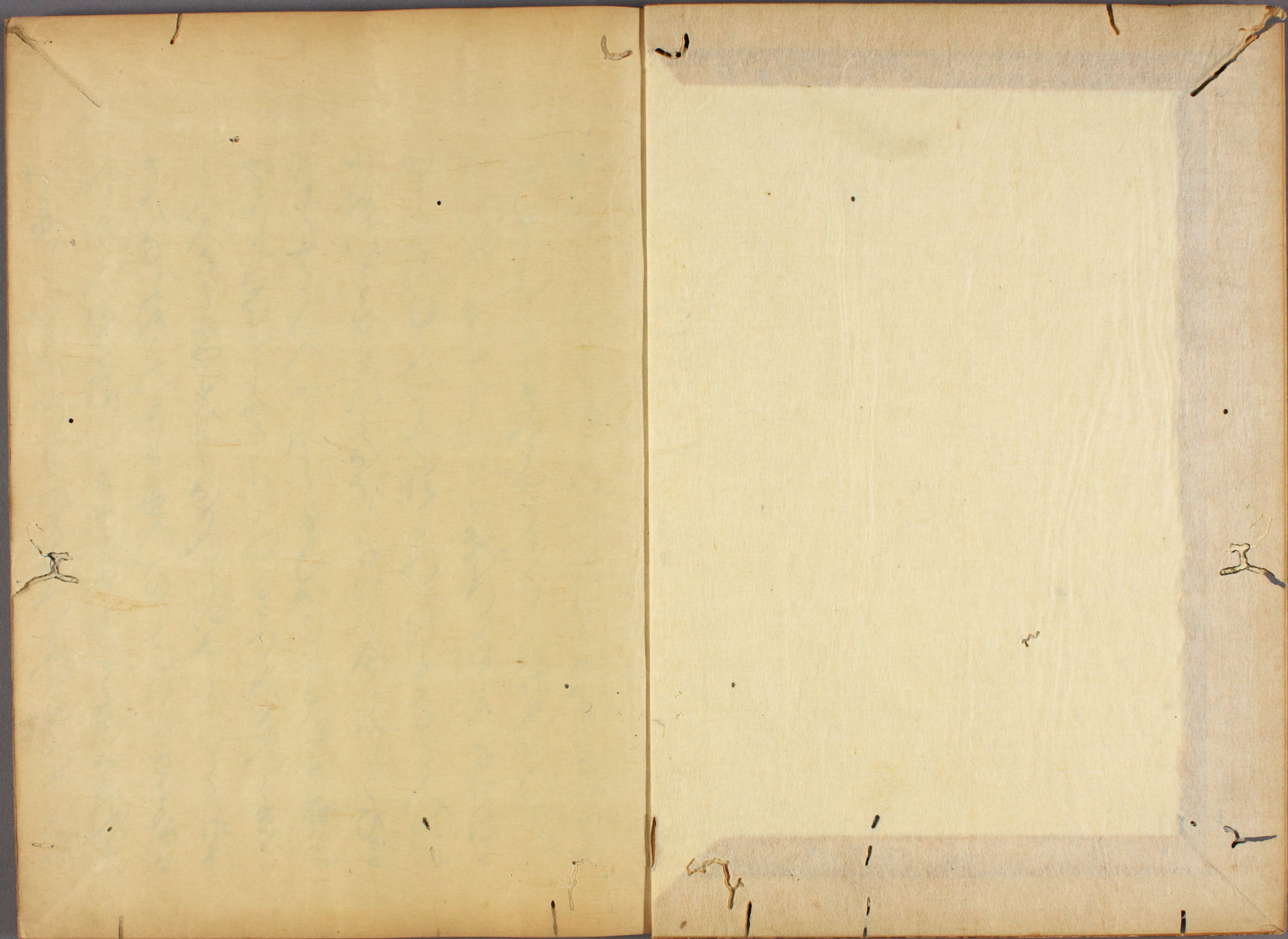


あまの
歌を名とせり

伊地知文庫
文庫20
396
3





伊地知氏書冊

Handwritten text in cursive script, likely a family record or genealogy, written in black ink on aged paper. The text is arranged in approximately 12 horizontal lines. Several characters are highlighted in red ink, possibly indicating specific names or dates. The script is dense and characteristic of Edo-period Japanese calligraphy.

Handwritten text in a cursive script, likely a historical document or manuscript. The text is written in black ink on aged, yellowish paper. It consists of approximately 12 lines of text, with some red ink used for initials or corrections. The script is highly stylized and difficult to decipher without a key.

Handwritten text in a cursive script, continuing from the previous page. The text is written in black ink on aged, yellowish paper. It consists of approximately 12 lines of text, with some red ink used for initials or corrections. The script is highly stylized and difficult to decipher without a key.

Handwritten text in a cursive script, likely a historical document or manuscript. The text is written in black ink on aged paper and includes several lines of text. Some characters are highlighted in red ink, possibly indicating specific names or dates. The script is dense and characteristic of early modern European handwriting.

Handwritten text in a cursive script, likely a historical document or manuscript. The text is written in black ink on aged paper and includes several lines of text. Some characters are highlighted in red ink, possibly indicating specific names or dates. The script is dense and characteristic of early modern European handwriting.

Handwritten text in a cursive script, likely a historical document or manuscript. The text is written in black ink on aged, yellowish paper. It consists of approximately 12 lines of text, with some red ink used for initials or corrections. The script is highly stylized and difficult to decipher without a key.

Handwritten text in a cursive script, likely a historical document or manuscript. The text is written in black ink on aged, yellowish paper. It consists of approximately 12 lines of text, with some red ink used for initials or corrections. The script is highly stylized and difficult to decipher without a key.

Handwritten text in a cursive script, likely a musical score or a list of names. The text is written in black ink on aged paper. There are several red ink markings, possibly initials or corrections, scattered throughout the lines. The script is dense and flowing, characteristic of 18th or 19th-century handwriting.

Handwritten text in a cursive script, continuing from the previous page. The text is written in black ink on aged paper. There are several red ink markings, possibly initials or corrections, scattered throughout the lines. The script is dense and flowing, characteristic of 18th or 19th-century handwriting.

Handwritten text in a cursive script, likely a historical document or manuscript. The text is written in black ink on aged paper and includes several lines of text, some of which are highlighted in red. The script is highly stylized and difficult to decipher without a key.

Handwritten text in a cursive script, likely a historical document or manuscript. The text is written in black ink on aged paper and includes several lines of text, some of which are highlighted in red. The script is highly stylized and difficult to decipher without a key.

Handwritten text in a cursive script, likely Arabic or Persian, spanning the left page of the manuscript. The text is written in black ink with some red ink used for decorative elements or corrections. The script is dense and fills most of the page.

Handwritten text in a cursive script, likely Arabic or Persian, spanning the right page of the manuscript. The text is written in black ink with some red ink used for decorative elements or corrections. The script is dense and fills most of the page.

Handwritten text in a cursive script, likely a historical document or manuscript. The text is written in black ink on aged paper and is organized into approximately 12 horizontal lines. Several characters are highlighted in red ink, possibly indicating specific names, dates, or important words. The script is dense and characteristic of early modern European handwriting.

Handwritten text in a cursive script, continuing from the previous page. The text is written in black ink on aged paper and is organized into approximately 12 horizontal lines. Several characters are highlighted in red ink. The script is dense and characteristic of early modern European handwriting.

物に事はるるは事多し
人招きては事多し
物に事はるるは事多し
人招きては事多し
物に事はるるは事多し
人招きては事多し
物に事はるるは事多し
人招きては事多し
物に事はるるは事多し
人招きては事多し

物に事はるるは事多し
人招きては事多し
物に事はるるは事多し
人招きては事多し
物に事はるるは事多し
人招きては事多し
物に事はるるは事多し
人招きては事多し
物に事はるるは事多し
人招きては事多し

Handwritten text in a cursive script, likely a historical document or letter. The text is written in black ink on aged, yellowed paper. It consists of approximately 15 lines of text, with some words or initials highlighted in red ink. The script is dense and flowing, characteristic of 17th or 18th-century cursive handwriting.

Handwritten text in a cursive script, continuing from the previous page. The text is written in black ink on aged, yellowed paper. It consists of approximately 15 lines of text, with some words or initials highlighted in red ink. The script is dense and flowing, characteristic of 17th or 18th-century cursive handwriting.

Handwritten text in a cursive script, likely a historical document or manuscript. The text is written in black ink on aged, yellowish paper. It consists of approximately 12 lines of text, with some red ink used for initials or corrections. The script is highly stylized and difficult to decipher without a key.

Handwritten text in a cursive script, likely a historical document or manuscript. The text is written in black ink on aged, yellowish paper. It consists of approximately 12 lines of text, with some red ink used for initials or corrections. The script is highly stylized and difficult to decipher without a key.

Handwritten text in a cursive script, likely a historical document or manuscript. The text is written in black ink on aged, yellowish paper. It consists of approximately 12 lines of text, with some red ink used for initials or corrections. The script is highly stylized and difficult to decipher without a key.

Handwritten text in a cursive script, continuing from the previous page. The text is written in black ink on aged, yellowish paper. It consists of approximately 12 lines of text, with some red ink used for initials or corrections. The script is highly stylized and difficult to decipher without a key.

Handwritten text in cursive script, likely a list or account. The text is written in black ink on aged paper. It begins with a long horizontal line, followed by several lines of text. The script is highly stylized and difficult to decipher. There are some red markings or initials interspersed throughout the text.

Handwritten text in cursive script, continuing from the previous page. The text is written in black ink on aged paper. It begins with a long horizontal line, followed by several lines of text. The script is highly stylized and difficult to decipher. There are some red markings or initials interspersed throughout the text.

Handwritten text in a cursive script, likely a historical document or manuscript. The text is written in black ink on aged, yellowed paper. It consists of approximately 12 lines of text, with some red ink used for initials or corrections. The script is highly stylized and difficult to decipher without a key.

Handwritten text in a cursive script, continuing from the previous page. The text is written in black ink on aged, yellowed paper. It consists of approximately 12 lines of text, with some red ink used for initials or corrections. The script is highly stylized and difficult to decipher without a key.

Handwritten text in a cursive script, likely a historical document or manuscript. The text is written in black ink on aged, yellowish paper. It consists of approximately 12 lines of text, with some red ink used for initials or corrections. The script is highly stylized and difficult to decipher without a key.

Handwritten text in a cursive script, continuing from the previous page. The text is written in black ink on aged, yellowish paper. It consists of approximately 12 lines of text, with some red ink used for initials or corrections. The script is highly stylized and difficult to decipher without a key.

Handwritten text in a cursive script, likely a historical document or manuscript. The text is written in black ink on aged, yellowish paper. It consists of approximately 15 lines of text, with some words or initials highlighted in red ink. The script is dense and characteristic of early modern handwriting.

Handwritten text in a cursive script, continuing from the previous page. The text is written in black ink on aged, yellowish paper. It consists of approximately 15 lines of text, with some words or initials highlighted in red ink. The script is dense and characteristic of early modern handwriting.

Handwritten text in a cursive script, likely a historical document or letter. The text is written in black ink on aged, yellowish paper. It consists of approximately 12 lines of text, with some words written in red ink (rubrics). The script is highly stylized and characteristic of the late 15th or early 16th century.

Handwritten text in a cursive script, continuing from the previous page. The text is written in black ink on aged, yellowish paper. It consists of approximately 12 lines of text, with some words written in red ink (rubrics). The script is highly stylized and characteristic of the late 15th or early 16th century.

Handwritten text in a cursive script, likely a historical document or manuscript. The text is written in black ink on aged, yellowish paper. It consists of approximately 12 lines of text, with some red ink used for initials or corrections. The script is highly stylized and difficult to decipher without a key.

Handwritten text in a cursive script, continuing from the previous page. The text is written in black ink on aged, yellowish paper. It consists of approximately 12 lines of text, with some red ink used for initials or corrections. The script is highly stylized and difficult to decipher without a key.

Handwritten text in a cursive script, likely a historical document or letter. The text is written in black ink on aged, yellowish paper. It consists of approximately 15 lines of text, with some words or initials highlighted in red ink. The script is dense and flowing, characteristic of 17th or 18th-century handwriting.

Handwritten text in a cursive script, continuing from the previous page. The text is written in black ink on aged, yellowish paper. It consists of approximately 15 lines of text, with some words or initials highlighted in red ink. The script is dense and flowing, characteristic of 17th or 18th-century handwriting.

Handwritten text in a cursive script, likely a historical document or manuscript. The text is written in black ink on aged, yellowish paper. It consists of approximately 12 lines of text, with some red ink used for initials or corrections. The script is highly stylized and difficult to decipher without a key.

Handwritten text in a cursive script, continuing from the previous page. The text is written in black ink on aged, yellowish paper. It consists of approximately 12 lines of text, with some red ink used for initials or corrections. The script is highly stylized and difficult to decipher without a key.

Handwritten text in a cursive script, likely a historical document or letter. The text is written in black ink on aged, yellowish paper. It consists of approximately 12 lines of text, with some red ink used for initials or corrections. The script is highly stylized and difficult to decipher without a key.

Handwritten text in a cursive script, continuing from the previous page. The text is written in black ink on aged, yellowish paper. It consists of approximately 12 lines of text, with some red ink used for initials or corrections. The script is highly stylized and difficult to decipher without a key.

Handwritten text in cursive script, likely a list or account. The text is written in black ink on aged paper. The first line begins with a large, decorative initial 'S'. The text continues across several lines, with some words appearing to be 'S...'. There are some red ink markings or corrections throughout the text.

Handwritten text in cursive script, continuing from the previous page. It begins with a large, decorative initial 'S'. The text is written in black ink on aged paper. There are some red ink markings or corrections throughout the text.

Handwritten text in cursive script, continuing from the previous page. It begins with a large, decorative initial 'S'. The text is written in black ink on aged paper. There are some red ink markings or corrections throughout the text.

Handwritten text in a cursive script, likely a historical document or manuscript. The text is written in black ink on aged paper and features several red initials or markers. The script is dense and fills most of the page.

Handwritten text in a cursive script, likely a historical document or manuscript. The text is written in black ink on aged paper and features several red initials or markers. The script is dense and fills most of the page.

Handwritten text in a cursive script, likely a historical document or manuscript. The text is written in black ink on aged paper and includes several lines of text, some of which are underlined. The script is dense and characteristic of early modern handwriting.

Handwritten text in a cursive script, likely a historical document or manuscript. The text is written in black ink on aged paper and includes several lines of text, some of which are underlined. The script is dense and characteristic of early modern handwriting.

Handwritten text in a cursive script, likely a historical document or manuscript. The text is written in black ink on aged, yellowish paper. It consists of approximately 12 lines of text, with some red ink used for initials or corrections. The script is highly stylized and difficult to decipher without a key.

Handwritten text in a cursive script, likely a historical document or manuscript. The text is written in black ink on aged, yellowish paper. It consists of approximately 12 lines of text, with some red ink used for initials or corrections. The script is highly stylized and difficult to decipher without a key.

Handwritten text in a cursive script, likely a historical document or manuscript. The text is written in black ink on aged, yellowish paper. It consists of approximately 15 lines of text, with some words highlighted in red ink. The script is highly stylized and difficult to decipher without a key.

Handwritten text in a cursive script, likely a historical document or manuscript. The text is written in black ink on aged, yellowish paper. It consists of approximately 15 lines of text, with some words highlighted in red ink. The script is highly stylized and difficult to decipher without a key.

Handwritten text in a cursive script, likely a historical document or manuscript. The text is written in black ink on aged, yellowish paper. It consists of several lines of text, with some words or initials highlighted in red ink. The script is dense and flowing, characteristic of early modern cursive.

Handwritten text in a cursive script, continuing from the previous page. The text is written in black ink on aged, yellowish paper. It consists of several lines of text, with some words or initials highlighted in red ink. The script is dense and flowing, characteristic of early modern cursive.

Handwritten text in a cursive script, likely a historical document or letter. The text is written in black ink on aged, yellowish paper. It begins with a large initial 'H' and contains several lines of text, including the word 'Herr' and 'Herrn'. The script is highly decorative and characteristic of the 16th or 17th century.

Handwritten text in a cursive script, likely a historical document or letter. The text is written in black ink on aged, yellowish paper. It begins with a large initial 'H' and contains several lines of text, including the word 'Herr' and 'Herrn'. The script is highly decorative and characteristic of the 16th or 17th century.

Handwritten text in a cursive script, likely a historical document or manuscript. The text is written in black ink on aged paper and features several red initials or markers. The script is dense and fills most of the page.

Handwritten text in a cursive script, continuing from the previous page. The text is written in black ink on aged paper and features several red initials or markers. The script is dense and fills most of the page.

Handwritten text in a cursive script, likely a historical document or letter. The text is written in black ink on aged paper and includes several lines of text, with some words or initials highlighted in red ink.

Handwritten text in a cursive script, likely a historical document or letter. The text is written in black ink on aged paper and includes several lines of text, with some words or initials highlighted in red ink.

Handwritten text in a cursive script, likely a historical document or manuscript. The text is written in black ink on aged, yellowish paper. It consists of approximately 12 lines of text, with some red ink used for initials or corrections. The script is highly stylized and difficult to decipher without a key.

Handwritten text in a cursive script, continuing from the previous page. The text is written in black ink on aged, yellowish paper. It consists of approximately 12 lines of text, with some red ink used for initials or corrections. The script is highly stylized and difficult to decipher without a key.

Handwritten text in a cursive script, likely a religious or historical document. The text is written in black ink on aged paper.

Handwritten text in a cursive script, likely a religious or historical document. The text is written in black ink on aged paper.

Handwritten text in a cursive script, likely a religious or historical document. The text is written in black ink on aged paper.

Handwritten text in a cursive script, likely a historical document or letter. The text is written in black ink on aged paper. It begins with a large initial 'P' and contains several lines of text, including the word 'Præsent' and 'Præsentatione'. The script is highly decorative and characteristic of the late 15th or early 16th century.

Handwritten text in a cursive script, continuing from the previous page. The text is written in black ink on aged paper. It begins with a large initial 'P' and contains several lines of text, including the word 'Præsentatione'. The script is highly decorative and characteristic of the late 15th or early 16th century.

Handwritten text in a cursive script, likely a historical document or manuscript. The text is written in black ink on aged, yellowish paper. It consists of approximately 12 lines of text, with some words or initials highlighted in red ink. The script is dense and characteristic of the early modern period.

Handwritten text in a cursive script, continuing from the previous page. The text is written in black ink on aged, yellowish paper. It consists of approximately 12 lines of text, with some words or initials highlighted in red ink. The script is dense and characteristic of the early modern period.

Handwritten text in a cursive script, likely a historical document or manuscript. The text is written in black ink on aged, yellowish paper. It consists of approximately 12 lines of text, with some red ink used for initials or corrections. The script is highly stylized and difficult to decipher without a key.

Handwritten text in a cursive script, continuing from the previous page. The text is written in black ink on aged, yellowish paper. It consists of approximately 12 lines of text, with some red ink used for initials or corrections. The script is highly stylized and difficult to decipher without a key.

Handwritten text in a cursive script, likely a historical document or manuscript. The text is written in black ink on aged paper and is organized into several lines. Some letters are highlighted in red ink, possibly indicating initials or specific words. The script is dense and characteristic of early modern European handwriting.

Handwritten text in a cursive script, likely a historical document or manuscript. The text is written in black ink on aged paper and is organized into several lines. Some letters are highlighted in red ink, possibly indicating initials or specific words. The script is dense and characteristic of early modern European handwriting.

Handwritten text in a cursive script, likely a form of shorthand or a specific dialect. The text is written in black ink on aged paper. It begins with a small symbol resembling a cross or a four-pointed star. The characters are highly stylized and interconnected, with some red ink used for emphasis or correction. The text is arranged in approximately 12 horizontal lines across the page.

Handwritten text in a cursive script, continuing from the previous page. The text is written in black ink on aged paper. It begins with a small symbol resembling a cross or a four-pointed star. The characters are highly stylized and interconnected, with some red ink used for emphasis or correction. The text is arranged in approximately 12 horizontal lines across the page.

Handwritten text in a cursive script, likely a historical document or manuscript. The text is written in black ink on aged, yellowish paper. It consists of approximately 15 lines of text, with some red ink used for initials or corrections. The script is dense and characteristic of the early modern period.

Handwritten text in a cursive script, continuing from the previous page. The text is written in black ink on aged, yellowish paper. It consists of approximately 15 lines of text, with some red ink used for initials or corrections. The script is dense and characteristic of the early modern period.

Handwritten text in a cursive script, likely Arabic or Persian, spanning the left page of the manuscript. The text is written in black ink with some red ink used for decorative elements or corrections. The script is dense and fills most of the page.

Handwritten text in a cursive script, likely Arabic or Persian, spanning the right page of the manuscript. The text is written in black ink with some red ink used for decorative elements or corrections. The script is dense and fills most of the page.

Handwritten text in a cursive script, likely a historical document or manuscript. The text is written in black ink on aged, yellowish paper. It consists of approximately 15 lines of text, with some red ink used for initials or corrections. The script is highly stylized and difficult to decipher without a key.

Handwritten text in a cursive script, continuing from the previous page. The text is written in black ink on aged, yellowish paper. It consists of approximately 15 lines of text, with some red ink used for initials or corrections. The script is highly stylized and difficult to decipher without a key.

Handwritten text in a cursive script, likely a title or heading, starting with a large initial letter.

Handwritten text, possibly a small note or correction, located at the top of the page.

Main body of handwritten text in a cursive script, consisting of several lines of text.

Main body of handwritten text in a cursive script, continuing from the previous page, consisting of several lines of text.

Handwritten text in a cursive script, likely a signature or a name, written vertically on the right page.

Faint, illegible handwritten text, possibly bleed-through from the reverse side of the page, covering the majority of the right page.



