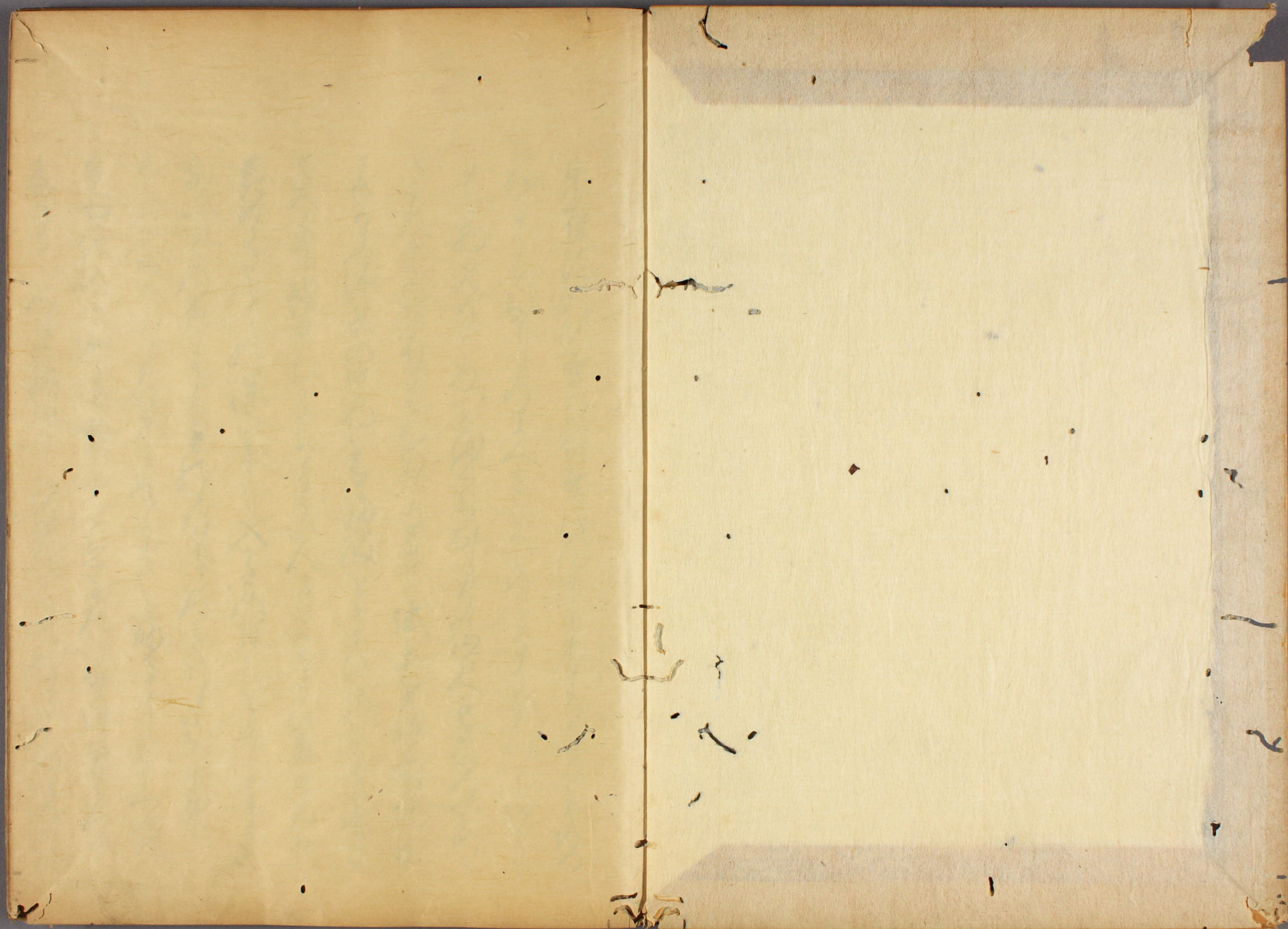


のみらの歌  
 詞を名にせしむ

伊地知文庫  
 文庫20  
 396  
 2













Handwritten text in cursive script on the left page of an open manuscript. The text is written in black ink on aged, yellowish paper. It consists of approximately 12 lines of dense, flowing script. There are several red ink markings, including small dots and short horizontal strokes, interspersed throughout the text, likely serving as accents or markers. The script is highly stylized and characteristic of a specific historical or regional handwriting style.

Handwritten text in cursive script on the right page of an open manuscript. The text is written in black ink on aged, yellowish paper. It consists of approximately 12 lines of dense, flowing script, mirroring the style of the left page. There are several red ink markings, including small dots and short horizontal strokes, interspersed throughout the text. The script is highly stylized and characteristic of a specific historical or regional handwriting style.



此の書は、  
 徳川幕府の  
 御用書生  
 松平定信  
 公の御筆  
 である。

此の書は、  
 徳川幕府の  
 御用書生  
 松平定信  
 公の御筆  
 である。



Handwritten text in a cursive script, likely a historical document or manuscript. The text is written in black ink on aged paper and is organized into approximately 12 horizontal lines. Several characters are highlighted in red ink, possibly indicating specific names, dates, or important terms. The script is dense and characteristic of early modern European handwriting.

Handwritten text in a cursive script, continuing from the previous page. The text is written in black ink on aged paper and is organized into approximately 12 horizontal lines. Several characters are highlighted in red ink, possibly indicating specific names, dates, or important terms. The script is dense and characteristic of early modern European handwriting.



Handwritten text in a cursive script, likely a historical document or manuscript. The text is written in dark ink on aged, yellowish paper. It consists of approximately 15 lines of text, with some red ink used for initials or corrections. The script is highly stylized and difficult to decipher without a key.

Handwritten text in a cursive script, likely a historical document or manuscript. The text is written in dark ink on aged, yellowish paper. It consists of approximately 15 lines of text, with some red ink used for initials or corrections. The script is highly stylized and difficult to decipher without a key.



Handwritten text in a cursive script, likely a historical document or letter. The text is written in a dark ink on aged, yellowish paper. It consists of approximately 12 lines of text, with some words or initials highlighted in red ink. The script is dense and flowing, characteristic of a cursive hand.

Handwritten text in a cursive script, continuing from the previous page. The text is written in a dark ink on aged, yellowish paper. It consists of approximately 12 lines of text, with some words or initials highlighted in red ink. The script is dense and flowing, characteristic of a cursive hand.



Handwritten text in a cursive script, likely a historical document or manuscript. The text is written in black ink on aged, yellowish paper. It consists of approximately 12 lines of text, with some red ink used for initials or corrections. The script is highly stylized and difficult to decipher without a key.

Handwritten text in a cursive script, likely a historical document or manuscript. The text is written in black ink on aged, yellowish paper. It consists of approximately 12 lines of text, with some red ink used for initials or corrections. The script is highly stylized and difficult to decipher without a key.



Handwritten text in a cursive script, likely a historical document or manuscript. The text is written in black ink on aged, yellowish paper. It consists of approximately 15 lines of text, with some words or initials highlighted in red ink. The script is dense and characteristic of early modern European handwriting.

Handwritten text in a cursive script, likely a historical document or manuscript. The text is written in black ink on aged, yellowish paper. It consists of approximately 15 lines of text, with some words or initials highlighted in red ink. The script is dense and characteristic of early modern European handwriting.



Handwritten text in a cursive script, likely a historical document or manuscript. The text is written in black ink on aged, yellowish paper. It consists of approximately 14 lines of text, with some red ink used for initials or corrections. The script is highly stylized and difficult to decipher without a key.

Handwritten text in a cursive script, continuing from the previous page. The text is written in black ink on aged, yellowish paper. It consists of approximately 14 lines of text, with some red ink used for initials or corrections. The script is highly stylized and difficult to decipher without a key.



Handwritten text in a cursive script, likely a historical document or manuscript. The text is written in black ink on aged paper and includes several lines of text, some with red ink markings or initials.

Handwritten text in a cursive script, likely a historical document or manuscript. The text is written in black ink on aged paper and includes several lines of text, some with red ink markings or initials.



مَنْ يَكْفُرْ بِآيَاتِ اللَّهِ وَرَسُولِهِ  
فَعَسَىٰ أَن يَكُونَ مِنَ الْخٰسِرِينَ  
إِن يَكْفُرْ بِاللَّهِ وَرَسُولِهِ  
فَعَسَىٰ أَن يَكُونَ مِنَ الْخٰسِرِينَ  
مَنْ يَكْفُرْ بِاللَّهِ وَرَسُولِهِ  
فَعَسَىٰ أَن يَكُونَ مِنَ الْخٰسِرِينَ

مَنْ يَكْفُرْ بِاللَّهِ وَرَسُولِهِ  
فَعَسَىٰ أَن يَكُونَ مِنَ الْخٰسِرِينَ  
مَنْ يَكْفُرْ بِاللَّهِ وَرَسُولِهِ  
فَعَسَىٰ أَن يَكُونَ مِنَ الْخٰسِرِينَ

مَنْ يَكْفُرْ بِاللَّهِ وَرَسُولِهِ  
فَعَسَىٰ أَن يَكُونَ مِنَ الْخٰسِرِينَ  
مَنْ يَكْفُرْ بِاللَّهِ وَرَسُولِهِ  
فَعَسَىٰ أَن يَكُونَ مِنَ الْخٰسِرِينَ  
مَنْ يَكْفُرْ بِاللَّهِ وَرَسُولِهِ  
فَعَسَىٰ أَن يَكُونَ مِنَ الْخٰسِرِينَ  
مَنْ يَكْفُرْ بِاللَّهِ وَرَسُولِهِ  
فَعَسَىٰ أَن يَكُونَ مِنَ الْخٰسِرِينَ  
مَنْ يَكْفُرْ بِاللَّهِ وَرَسُولِهِ  
فَعَسَىٰ أَن يَكُونَ مِنَ الْخٰسِرِينَ



Handwritten text in Arabic script, likely a religious or historical document. The text is written in a cursive style with some red ink used for emphasis or correction. The lines are arranged horizontally across the page.

Handwritten text in Arabic script, continuing from the previous page. The text is written in a cursive style with some red ink used for emphasis or correction. The lines are arranged horizontally across the page.



Handwritten text in Arabic script, likely a religious or philosophical treatise. The text is written in a cursive style with some red ink used for emphasis or correction. The lines are arranged vertically from right to left.

Handwritten text in Arabic script, continuing the text from the previous page. The script is consistent with the first page, featuring cursive letters and occasional red ink markings. The lines are arranged vertically from right to left.



Handwritten text in a cursive script, likely a historical document or manuscript. The text is written in black ink on aged, yellowish paper. It consists of approximately 15 lines of text, with some words or initials highlighted in red ink. The script is dense and characteristic of early modern European handwriting.

Handwritten text in a cursive script, continuing from the previous page. The text is written in black ink on aged, yellowish paper. It consists of approximately 15 lines of text, with some words or initials highlighted in red ink. The script is dense and characteristic of early modern European handwriting.



بسم الله الرحمن الرحيم  
الحمد لله رب العالمين  
والصلاة والسلام على  
سيدنا محمد وآله الطيبين  
الطاهرين  
الذين هم خاتم النبيين  
مبشرين ونذيرين  
والله اعلم بالصواب  
فمن قرأ هذا الكتاب  
فليكن له من الله  
جنتان  
والله اعلم بالصواب  
والصلاة والسلام على  
سيدنا محمد وآله الطيبين  
الطاهرين  
الذين هم خاتم النبيين  
مبشرين ونذيرين  
والله اعلم بالصواب  
فمن قرأ هذا الكتاب  
فليكن له من الله  
جنتان  
والله اعلم بالصواب

بسم الله الرحمن الرحيم  
الحمد لله رب العالمين  
والصلاة والسلام على  
سيدنا محمد وآله الطيبين  
الطاهرين  
الذين هم خاتم النبيين  
مبشرين ونذيرين  
والله اعلم بالصواب  
فمن قرأ هذا الكتاب  
فليكن له من الله  
جنتان  
والله اعلم بالصواب  
والصلاة والسلام على  
سيدنا محمد وآله الطيبين  
الطاهرين  
الذين هم خاتم النبيين  
مبشرين ونذيرين  
والله اعلم بالصواب  
فمن قرأ هذا الكتاب  
فليكن له من الله  
جنتان  
والله اعلم بالصواب



Handwritten text in a cursive script, likely a historical document or manuscript. The text is written in black ink on aged, yellowish paper. It consists of approximately 12 lines of text, with some red ink used for initials or corrections. The script is dense and flowing, characteristic of early modern cursive.

Handwritten text in a cursive script, continuing from the previous page. The text is written in black ink on aged, yellowish paper. It consists of approximately 12 lines of text, with some red ink used for initials or corrections. The script is dense and flowing, characteristic of early modern cursive.



Handwritten text in a cursive script, likely a historical document or letter. The text is written in black ink on aged, yellowish paper. It begins with a red initial 'W' and contains several lines of text, including the word 'Gentil' and 'Gentil'.

Handwritten text in a cursive script, likely a historical document or letter. The text is written in black ink on aged, yellowish paper. It begins with a red initial 'W' and contains several lines of text, including the word 'Gentil' and 'Gentil'.



unvollständigen  
aus dem Jahr 1781  
aus dem Jahr 1782  
aus dem Jahr 1783  
aus dem Jahr 1784  
aus dem Jahr 1785  
aus dem Jahr 1786  
aus dem Jahr 1787  
aus dem Jahr 1788  
aus dem Jahr 1789  
aus dem Jahr 1790  
aus dem Jahr 1791  
aus dem Jahr 1792  
aus dem Jahr 1793  
aus dem Jahr 1794  
aus dem Jahr 1795  
aus dem Jahr 1796  
aus dem Jahr 1797  
aus dem Jahr 1798  
aus dem Jahr 1799  
aus dem Jahr 1800

Verzeichnis

aus dem Jahr 1801  
aus dem Jahr 1802  
aus dem Jahr 1803  
aus dem Jahr 1804  
aus dem Jahr 1805  
aus dem Jahr 1806  
aus dem Jahr 1807  
aus dem Jahr 1808  
aus dem Jahr 1809  
aus dem Jahr 1810  
aus dem Jahr 1811  
aus dem Jahr 1812  
aus dem Jahr 1813  
aus dem Jahr 1814  
aus dem Jahr 1815  
aus dem Jahr 1816  
aus dem Jahr 1817  
aus dem Jahr 1818  
aus dem Jahr 1819  
aus dem Jahr 1820



Handwritten text in a cursive script, likely a historical document or manuscript. The text is written in black ink on aged, yellowish paper. It consists of approximately 12 lines of text, with some red ink used for initials or corrections. The script is highly stylized and difficult to decipher without a key.

Handwritten text in a cursive script, continuing from the previous page. The text is written in black ink on aged, yellowish paper. It consists of approximately 12 lines of text, with some red ink used for initials or corrections. The script is highly stylized and difficult to decipher without a key.



Handwritten text in cursive script, likely a list or account, with several lines of text. The script is dense and flowing, with some red ink used for initials or corrections.

Handwritten text in cursive script, continuing the list or account from the previous page. The script is dense and flowing, with some red ink used for initials or corrections.



Handwritten musical notation on the left page, consisting of a single staff with a treble clef. The notation is written in black ink with red accents (accents) marking specific notes. The notes are connected by a continuous line, characteristic of early manuscript notation.

Handwritten musical notation on the right page, consisting of a single staff with a treble clef. The notation is written in black ink with red accents (accents) marking specific notes. The notes are connected by a continuous line, characteristic of early manuscript notation.







Handwritten text in a cursive script, likely a historical document or manuscript. The text is written in black ink on aged, yellowish paper. It consists of approximately 12 lines of text. Several characters are highlighted in red ink, possibly indicating specific names or important words. The script is dense and characteristic of early modern European handwriting.

Handwritten text in a cursive script, continuing from the previous page. The text is written in black ink on aged, yellowish paper. It consists of approximately 12 lines of text. Several characters are highlighted in red ink, possibly indicating specific names or important words. The script is dense and characteristic of early modern European handwriting.



Handwritten text in a cursive script, likely a historical document or manuscript. The text is written in black ink on aged, yellowish paper. It consists of approximately 15 lines of text, with some words or initials highlighted in red ink. The script is dense and characteristic of early modern European handwriting.

Handwritten text in a cursive script, continuing from the previous page. The text is written in black ink on aged, yellowish paper. It consists of approximately 15 lines of text, with some words or initials highlighted in red ink. The script is dense and characteristic of early modern European handwriting.



Handwritten text in a cursive script, likely a historical document or letter. The text is written in black ink on aged, yellowed paper. It begins with a large initial 'S' and continues with several lines of text. The script is highly stylized and characteristic of the 17th or 18th century.

Handwritten text in a cursive script, likely a historical document or letter. The text is written in black ink on aged, yellowed paper. It begins with a large initial 'S' and continues with several lines of text. The script is highly stylized and characteristic of the 17th or 18th century.











