

相成

己の... 又

の... 陰

子... 陰

知... 陰

の... 陰

の... 陰

の... 陰

の... 陰

の... 陰

の... 陰

の... 陰

清江のほとけ

名前のこと

とら

おとあ

い

あま

一

か

あ

あ

あ

あ

あ

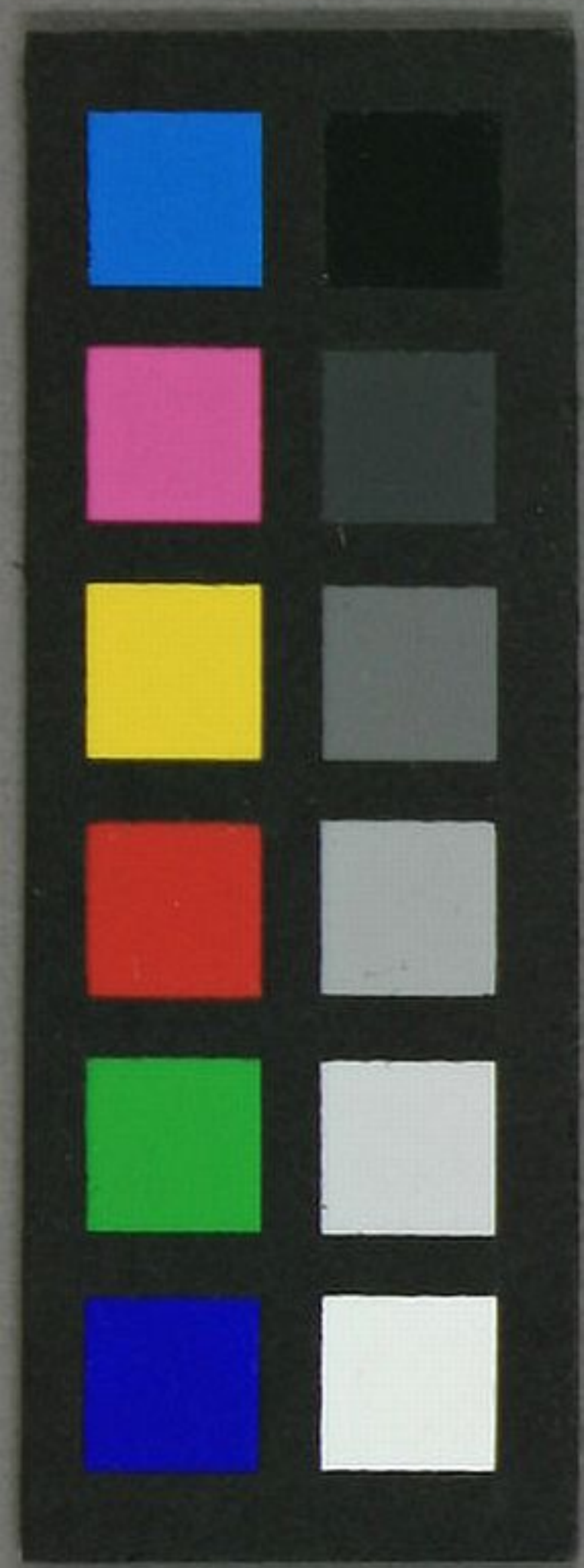
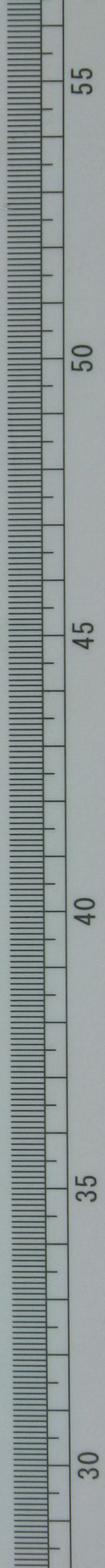
初下幼弟鵬可方字學解五五

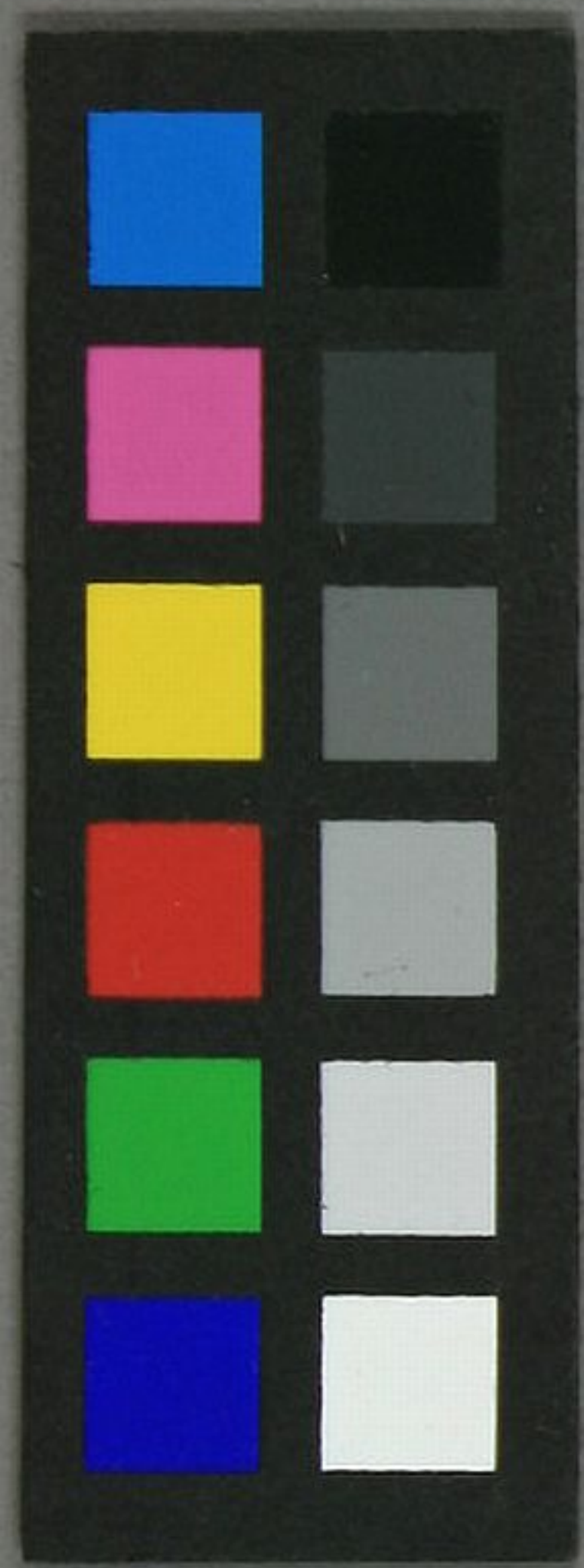
去
破
久
如
標
記
破



文庫
C431

<2004-1500>





Handwritten text in cursive script, likely Japanese, on a yellowish envelope. The text is arranged in two vertical columns. The right column contains the characters 切手 (Kisho) and 宛 (Okae). The left column contains the characters 切手 (Kisho) and 宛 (Okae). There are two circular postmarks on the envelope. The upper postmark is partially obscured by a diagonal line and contains the numbers 8, 7, 4. The lower postmark is also partially obscured and contains the numbers 8, 7, 4. The envelope is placed on a grey background with a ruler on the right side.

