

有部
有部

有部
有部

有部
有部

有部
有部

有部
有部

有部
有部

有部
有部

有部
有部

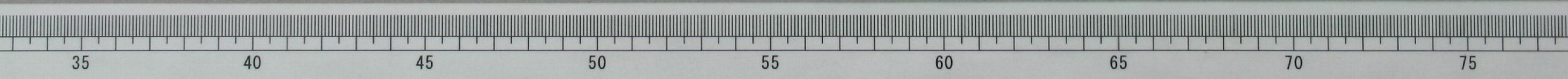
有部
有部

有部
有部

有部
有部

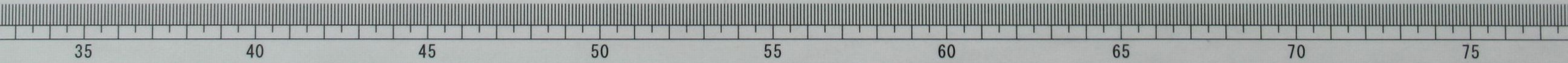
有部
有部

有部
有部



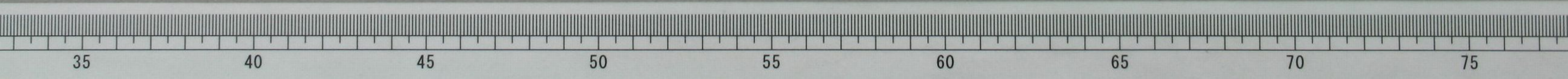


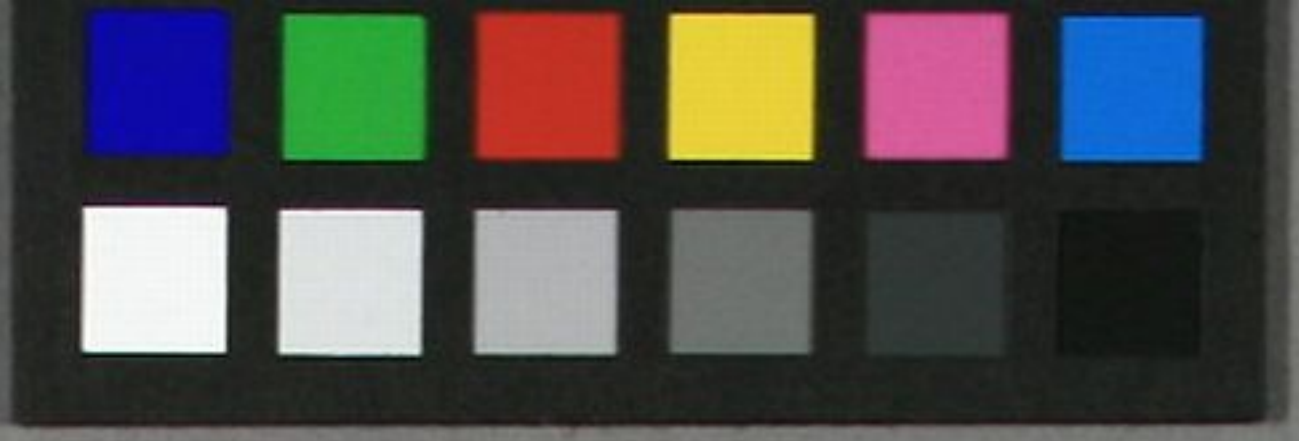
Handwritten Japanese calligraphy in cursive style (sōsho), written vertically on a strip of paper. The characters are highly stylized and fluid, typical of the cursive script. The text is arranged in a single column from right to left, with approximately 25-30 characters visible. The paper is aged and yellowed.



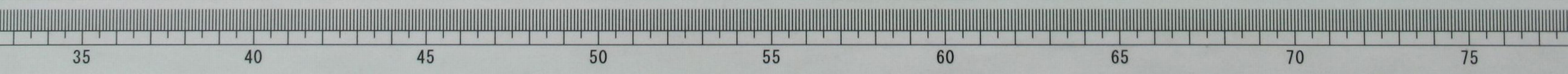


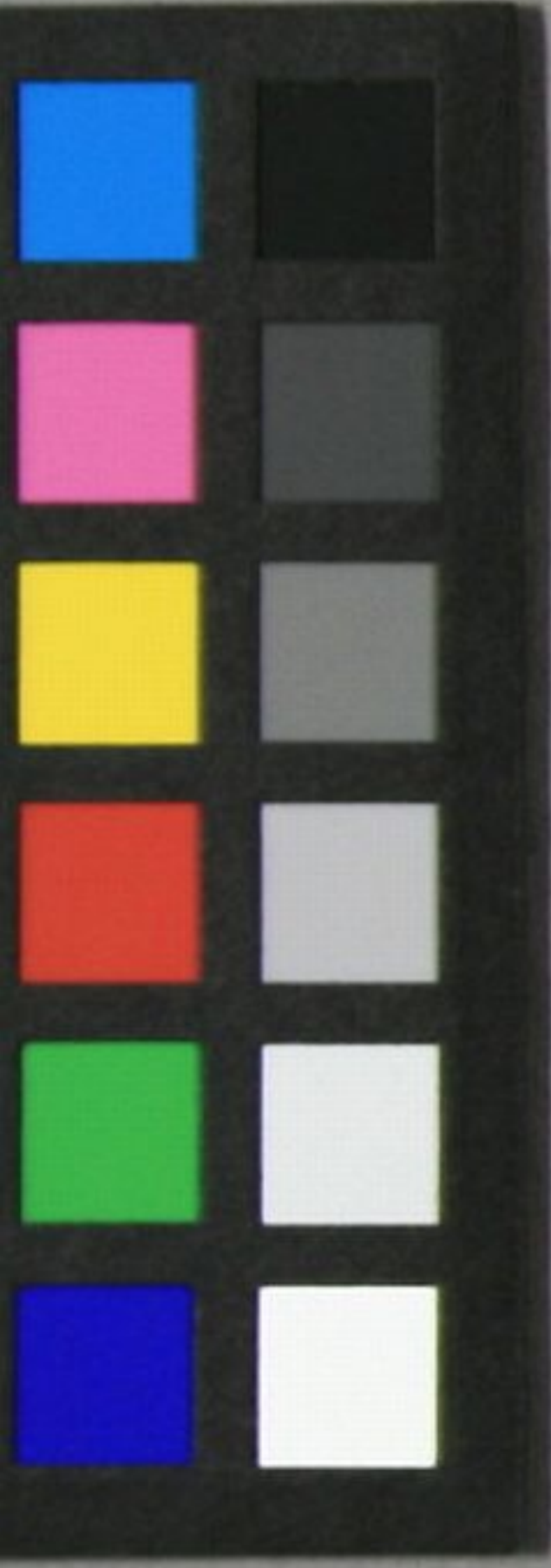
Handwritten Chinese calligraphy in cursive script (草书) on a scroll. The characters are arranged in vertical columns from right to left. The text is highly stylized and difficult to decipher without context. A small character '也' is written above the column starting at approximately x=550. A ruler at the bottom indicates the horizontal position of the columns.





春分之日
 陽氣漸長
 陰氣漸消
 天地交泰
 萬物萌生
 君子居則
 仁讓
 行則剛中
 以應天時
 之序

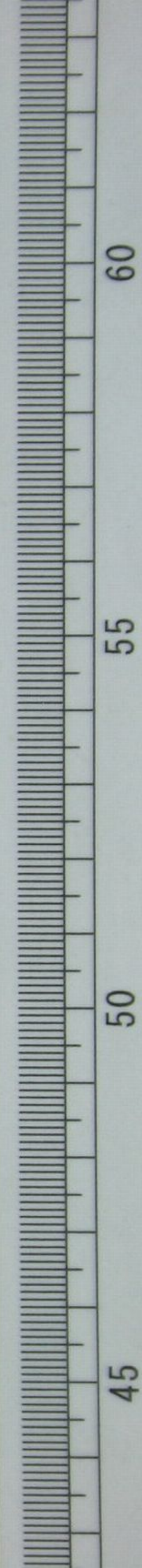


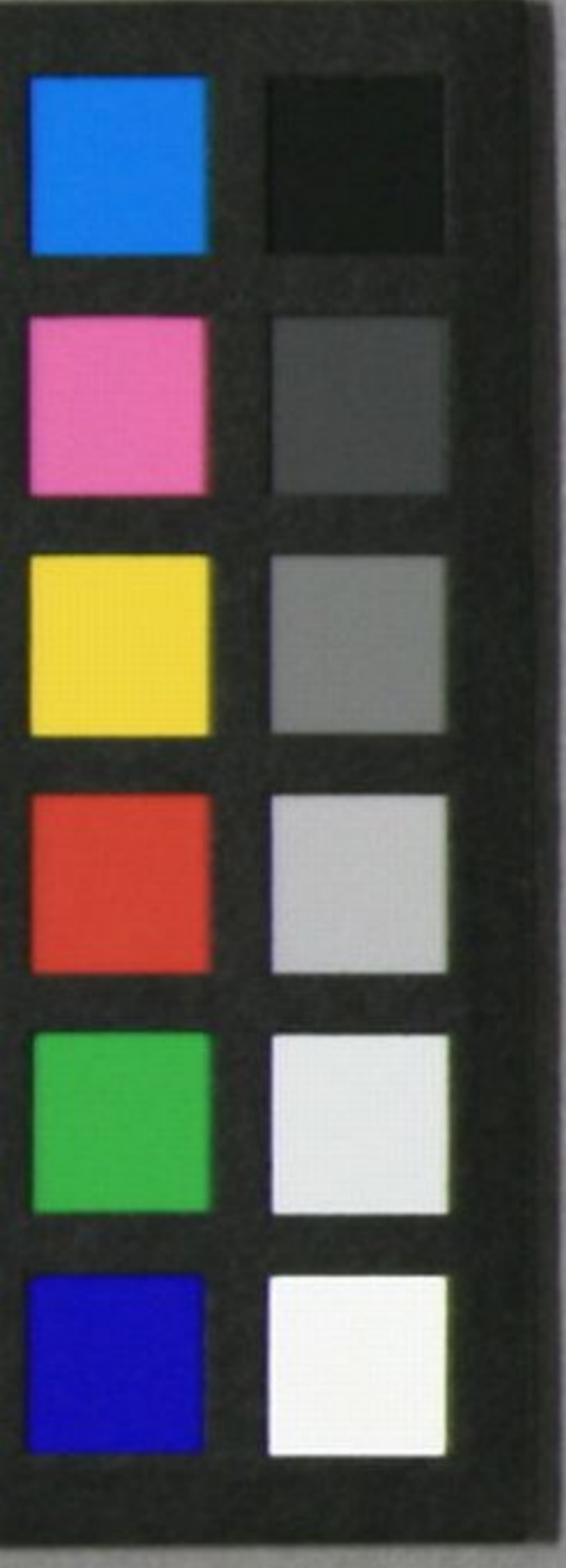


Handwritten text in cursive script (草書) on aged paper. The characters are arranged in two vertical columns, reading from right to left. The right column contains the characters 牙, 有, 回, 子, 念, 丸, 標. The left column contains the characters 一, 天, 公, 氏, 法, 寺, 之, 乙. The paper shows signs of age, including yellowing and some staining.

文庫14
C368

<2004-1437>





乙
 卯年
 正月
 廿八日
 卯時

