

郵便はかき

東京市小石川區  
高田老朽所十七  
本間久雄様

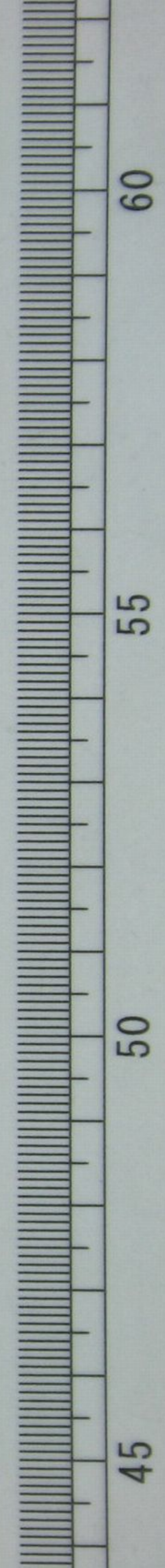


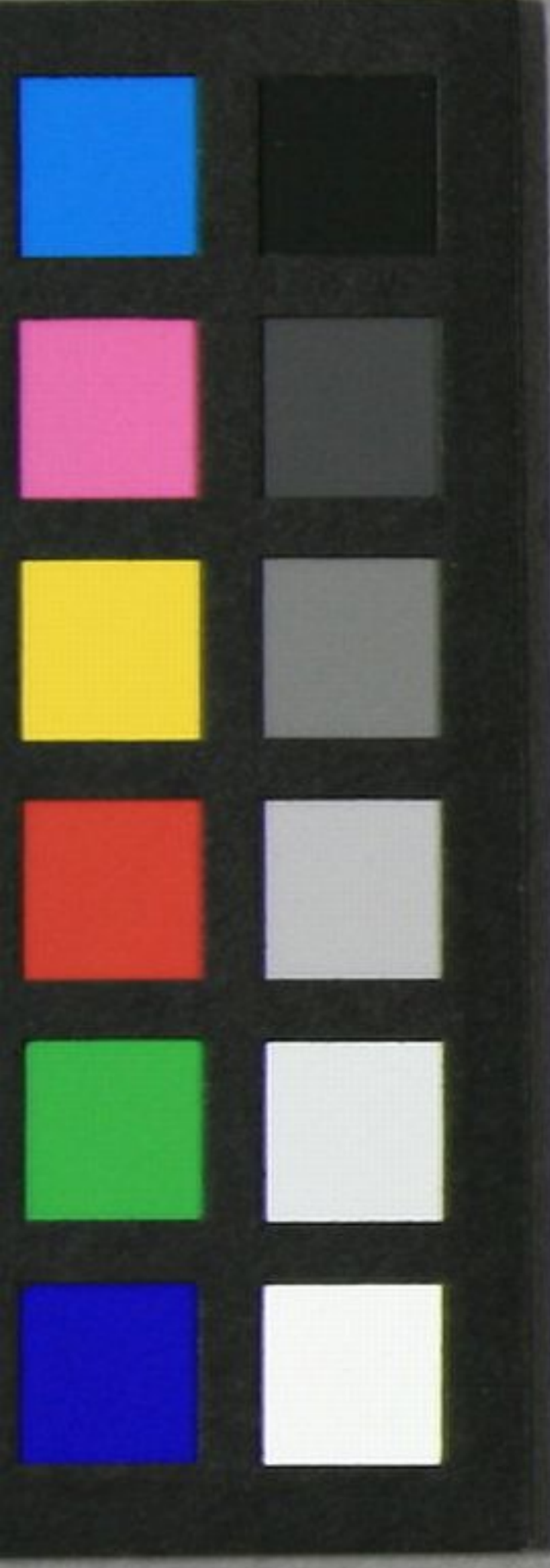
印刷局製

<2004-1372>

郵便省發行

第14号  
0303





Handwritten Japanese text in cursive (sōsho) style, written vertically on a rectangular piece of aged paper. The text is organized into several columns. The rightmost column contains the characters "軍部 文部 四部 文部 警務 部" (Army, Education, Fourth, Education, Police, Department). The middle column contains "は 色 入 用 家 西 部 部 部" (wa iro iri yō ka sei bu bu bu). The leftmost column contains "中 女 女 女 女" (naka me yo yo yo yo). There are also some vertical scribbles on the left side of the page.

