

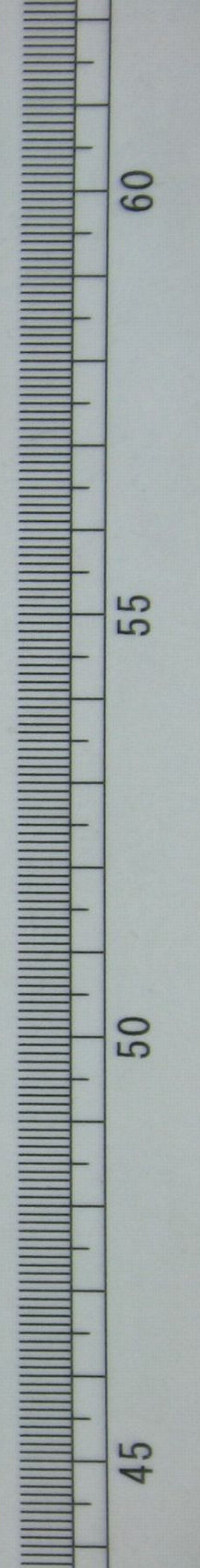
きかは便郵

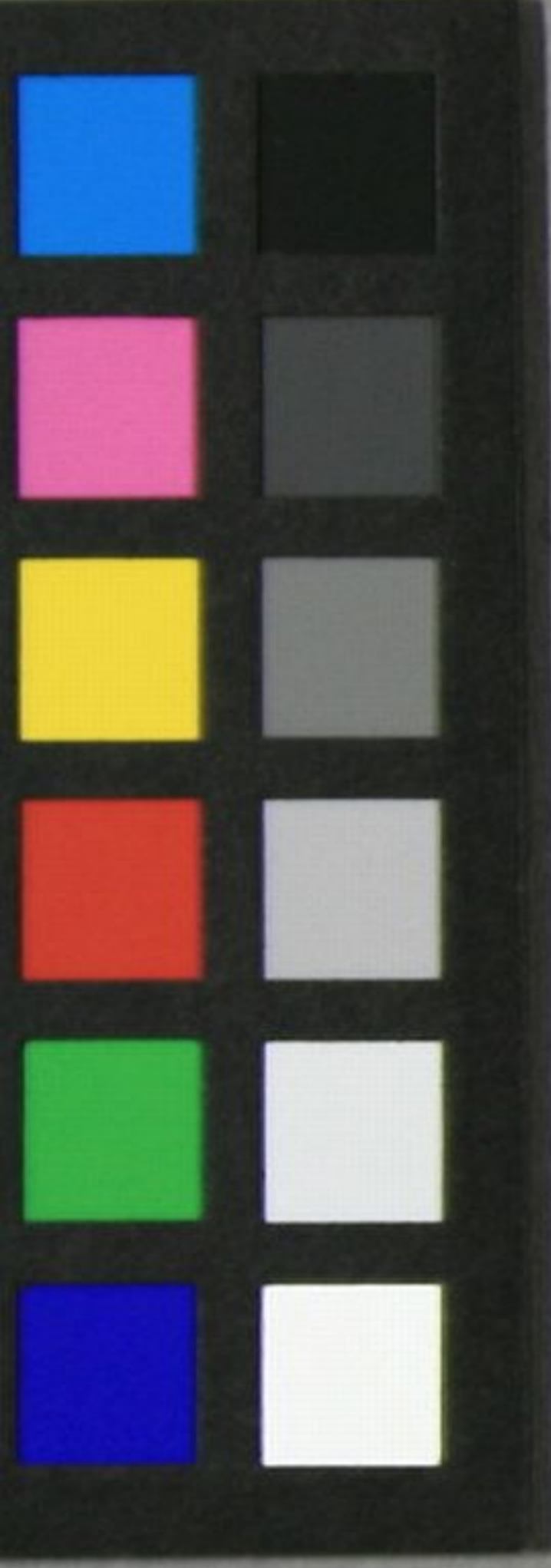
東京市五区
谷町一丁目
本島久雄



<2004-1367>

雄14
C298





Handwritten text in Chinese characters, including two red square seals. The text is written in a cursive style. The seals are red ink impressions of Chinese characters. The top seal is a square seal with a red border and contains the characters '王' (Wang) and '之' (Zhi). The bottom seal is a square seal with a red border and contains the characters '王' (Wang) and '之' (Zhi). The text is arranged in two columns, with the top seal on the left and the bottom seal on the right. The text is written in black ink on a light-colored paper.

