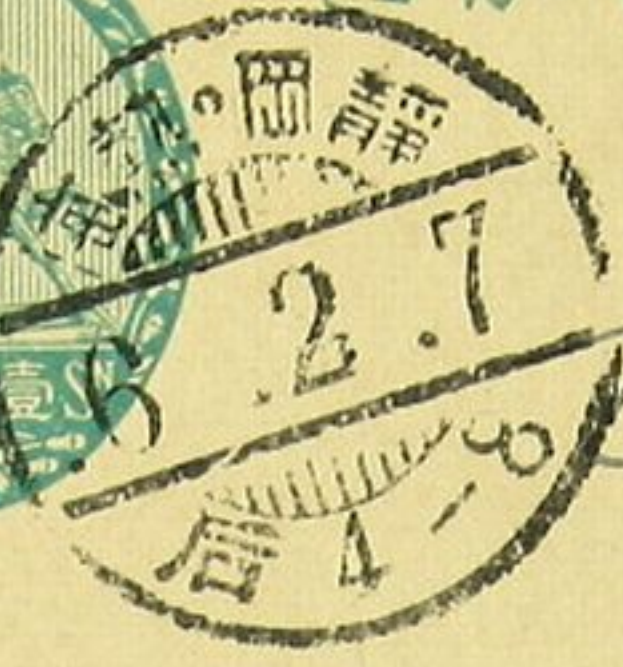


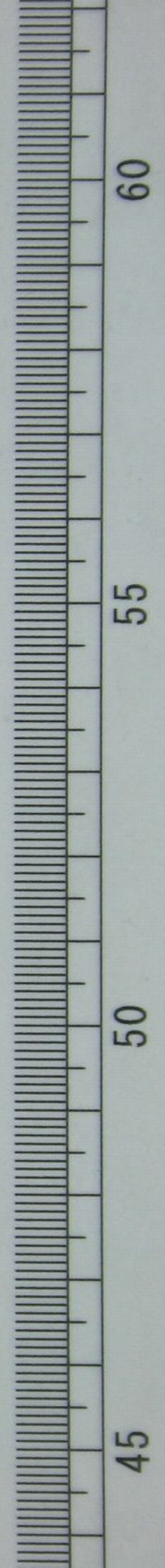
郵便はかま

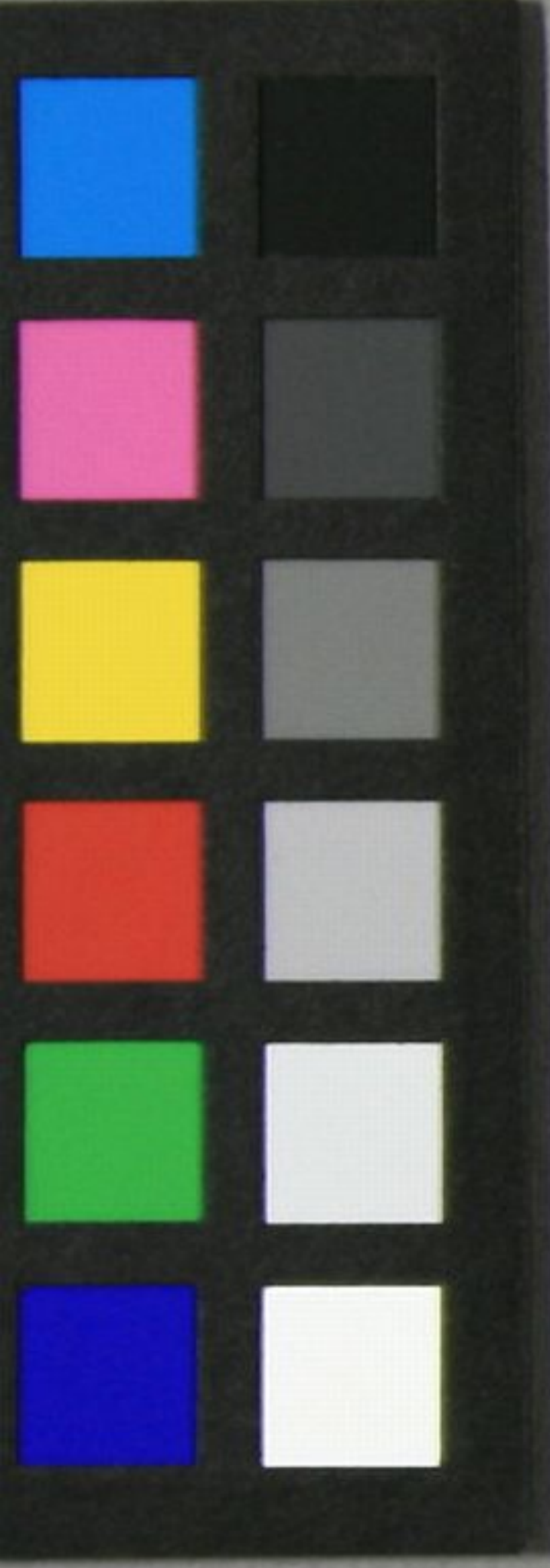


東京市山手区
神田区
川口
池袋
有楽町
丸の内
有明
有楽町線
丸の内線
山手線
有明線
有楽町線
丸の内線
山手線
有明線



文庫14
<2004-1358> C289





Tablet from the Chu state, with the characters 'Tablet' and 'Chu' written in seal script. The text is arranged in vertical columns, reading from right to left. The characters are highly stylized and cursive. The first column on the right contains the characters '表' (Tablet) and '楚' (Chu). The second column contains '一' (one) and '文' (text). The third column contains '子' (son) and '子' (son). The fourth column contains '子' (son) and '子' (son). The fifth column contains '子' (son) and '子' (son). The sixth column contains '子' (son) and '子' (son). The seventh column contains '子' (son) and '子' (son). The eighth column contains '子' (son) and '子' (son). The ninth column contains '子' (son) and '子' (son). The tenth column contains '子' (son) and '子' (son). The eleventh column contains '子' (son) and '子' (son). The twelfth column contains '子' (son) and '子' (son). The thirteenth column contains '子' (son) and '子' (son). The fourteenth column contains '子' (son) and '子' (son). The fifteenth column contains '子' (son) and '子' (son). The sixteenth column contains '子' (son) and '子' (son). The seventeenth column contains '子' (son) and '子' (son). The eighteenth column contains '子' (son) and '子' (son). The nineteenth column contains '子' (son) and '子' (son). The twentieth column contains '子' (son) and '子' (son). The twenty-first column contains '子' (son) and '子' (son). The twenty-second column contains '子' (son) and '子' (son). The twenty-third column contains '子' (son) and '子' (son). The twenty-fourth column contains '子' (son) and '子' (son). The twenty-fifth column contains '子' (son) and '子' (son). The twenty-sixth column contains '子' (son) and '子' (son). The twenty-seventh column contains '子' (son) and '子' (son). The twenty-eighth column contains '子' (son) and '子' (son). The twenty-ninth column contains '子' (son) and '子' (son). The thirtieth column contains '子' (son) and '子' (son). The thirty-first column contains '子' (son) and '子' (son). The thirty-second column contains '子' (son) and '子' (son). The thirty-third column contains '子' (son) and '子' (son). The thirty-fourth column contains '子' (son) and '子' (son). The thirty-fifth column contains '子' (son) and '子' (son). The thirty-sixth column contains '子' (son) and '子' (son). The thirty-seventh column contains '子' (son) and '子' (son). The thirty-eighth column contains '子' (son) and '子' (son). The thirty-ninth column contains '子' (son) and '子' (son). The fortieth column contains '子' (son) and '子' (son). The forty-first column contains '子' (son) and '子' (son). The forty-second column contains '子' (son) and '子' (son). The forty-third column contains '子' (son) and '子' (son). The forty-fourth column contains '子' (son) and '子' (son). The forty-fifth column contains '子' (son) and '子' (son). The forty-sixth column contains '子' (son) and '子' (son). The forty-seventh column contains '子' (son) and '子' (son). The forty-eighth column contains '子' (son) and '子' (son). The forty-ninth column contains '子' (son) and '子' (son). The fiftieth column contains '子' (son) and '子' (son). The fifty-first column contains '子' (son) and '子' (son). The fifty-second column contains '子' (son) and '子' (son). The fifty-third column contains '子' (son) and '子' (son). The fifty-fourth column contains '子' (son) and '子' (son). The fifty-fifth column contains '子' (son) and '子' (son). The fifty-sixth column contains '子' (son) and '子' (son). The fifty-seventh column contains '子' (son) and '子' (son). The fifty-eighth column contains '子' (son) and '子' (son). The fifty-ninth column contains '子' (son) and '子' (son). The sixtieth column contains '子' (son) and '子' (son). The sixty-first column contains '子' (son) and '子' (son). The sixty-second column contains '子' (son) and '子' (son). The sixty-third column contains '子' (son) and '子' (son). The sixty-fourth column contains '子' (son) and '子' (son). The sixty-fifth column contains '子' (son) and '子' (son). The sixty-sixth column contains '子' (son) and '子' (son). The sixty-seventh column contains '子' (son) and '子' (son). The sixty-eighth column contains '子' (son) and '子' (son). The sixty-ninth column contains '子' (son) and '子' (son). The seventieth column contains '子' (son) and '子' (son). The seventy-first column contains '子' (son) and '子' (son). The seventy-second column contains '子' (son) and '子' (son). The seventy-third column contains '子' (son) and '子' (son). The seventy-fourth column contains '子' (son) and '子' (son). The seventy-fifth column contains '子' (son) and '子' (son). The seventy-sixth column contains '子' (son) and '子' (son). The seventy-seventh column contains '子' (son) and '子' (son). The seventy-eighth column contains '子' (son) and '子' (son). The seventy-ninth column contains '子' (son) and '子' (son). The eightieth column contains '子' (son) and '子' (son). The eighty-first column contains '子' (son) and '子' (son). The eighty-second column contains '子' (son) and '子' (son). The eighty-third column contains '子' (son) and '子' (son). The eighty-fourth column contains '子' (son) and '子' (son). The eighty-fifth column contains '子' (son) and '子' (son). The eighty-sixth column contains '子' (son) and '子' (son). The eighty-seventh column contains '子' (son) and '子' (son). The eighty-eighth column contains '子' (son) and '子' (son). The eighty-ninth column contains '子' (son) and '子' (son). The ninetieth column contains '子' (son) and '子' (son). The hundredth column contains '子' (son) and '子' (son).

