

郵便はかき

京都府山科
南田老松所
本十乃久
破瓶



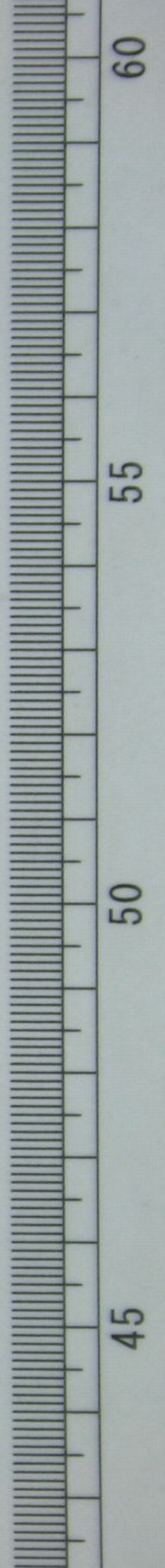
印刷局製

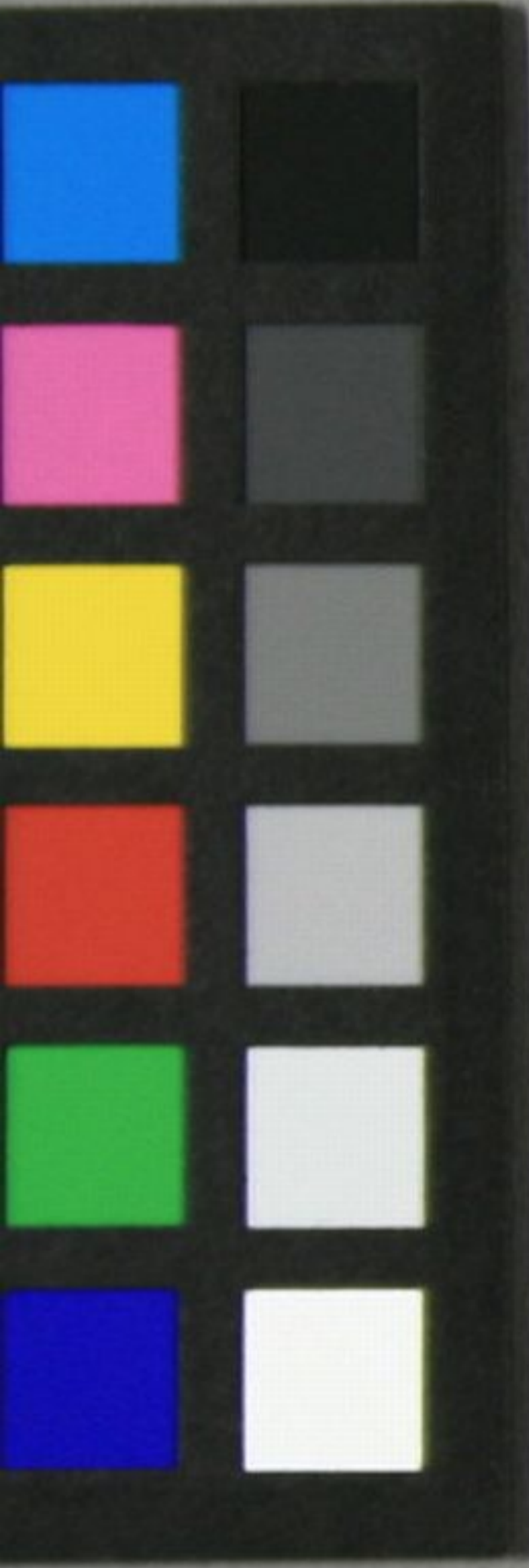
逓信省發行

<2004-1276>

文庫14

C207





Handwritten text in a cursive script, likely Chinese, arranged in vertical columns. The text is written on aged, yellowish paper. The characters are fluid and connected, characteristic of cursive calligraphy. The text is organized into several vertical columns, with some characters appearing to be part of a larger sequence or list. The overall appearance is that of a handwritten note or a page from a diary or journal.

