

郵便はかき

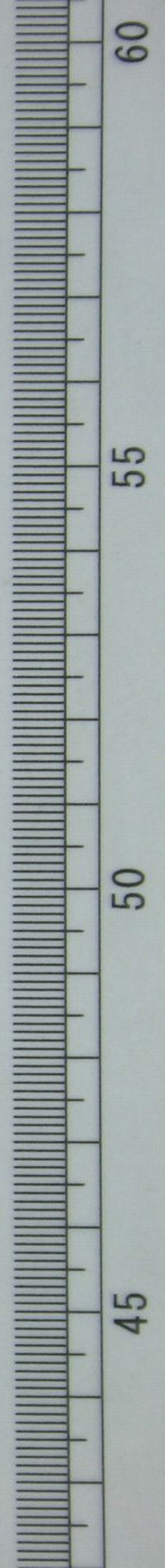
本間久雄様

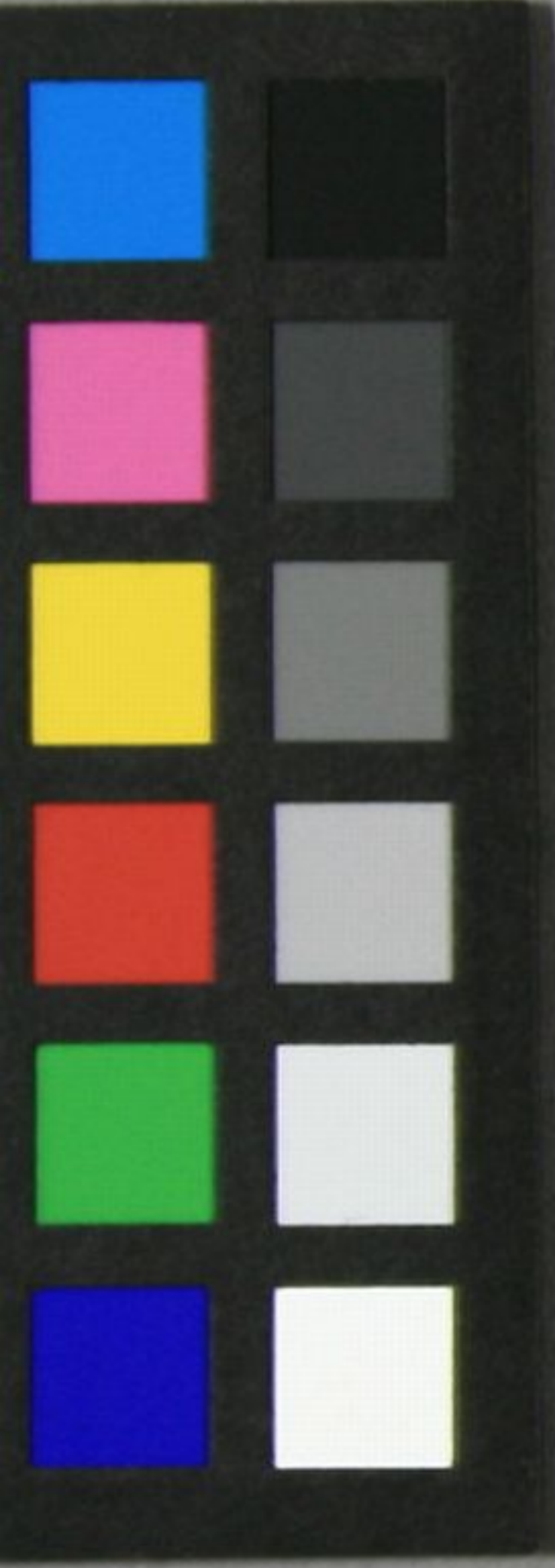
東京市山手区
高田花柳町十一



印刷局製

文庫14
C206
逓信省發行
<2009-1275>





Handwritten Japanese text in cursive style (sōsho). The text is arranged in approximately five vertical columns, reading from right to left. The characters are fluid and connected, typical of a personal note or a quick sketch of a letter. The text is written on a rectangular piece of aged paper.

