

さかは便郵

高田老松河十七
本間久雄様

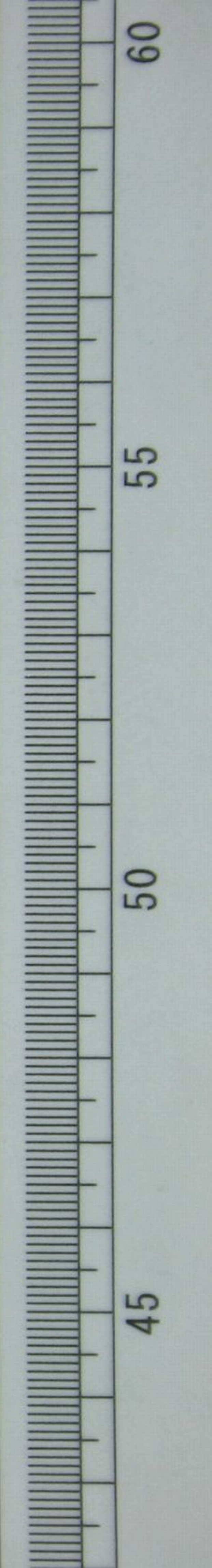


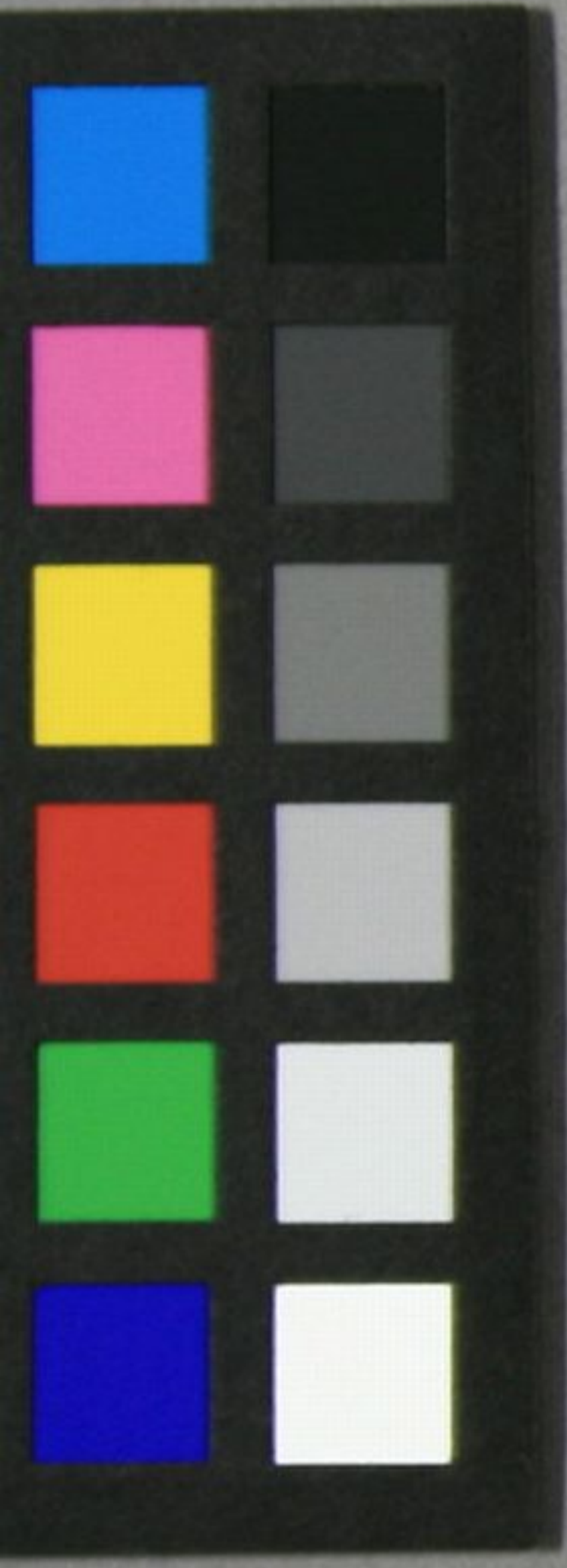
造製局刷印

行發省信通

<2004-1271>

文庫4
C202





Handwritten Japanese calligraphy in cursive style (sōsho). The text is organized into several columns, starting from the right side of the page. The characters are highly stylized and fluid. The visible text includes characters such as 三 (san), 楊 (yō), 裁 (sai), 枯 (ku), 稿 (kō), 何 (na), 器 (ki), 子 (shi), 石 (shi), 子 (shi), 石 (shi), 子 (shi), 石 (shi), 子 (shi), 石 (shi).

