

Handwritten text in a vertical column on the left side of the paper, possibly a library or collection number.





Handwritten text in cursive script, starting with a large initial character.

Handwritten text in cursive script, continuing the previous line.

Handwritten text in cursive script, continuing the previous line.

Handwritten text in cursive script, continuing the previous line.

Handwritten text in cursive script, continuing the previous line.

Handwritten text in cursive script, continuing the previous line.

Handwritten text in cursive script, continuing the previous line.

Handwritten text in cursive script, continuing the previous line.

Handwritten text in cursive script, continuing the previous line.

Handwritten text in cursive script, continuing the previous line.

Handwritten text in a cursive script, likely Persian or Urdu, on a rectangular piece of paper pasted onto the left page. The text is arranged in several lines, starting with a large initial letter.

Handwritten text in a cursive script, likely Persian or Urdu, on the right page. The text is arranged in several lines, starting with a large initial letter.

Handwritten text in a cursive script, likely Persian or Urdu, on a rectangular piece of paper pasted onto the right page. The text is arranged in several lines, starting with a large initial letter.

Handwritten notes in Arabic script, including a large initial letter 'س' and several lines of text.

Main body of handwritten text in Arabic script, consisting of approximately 15 lines of dense cursive writing.

Handwritten notes at the bottom of the page, including a large initial letter 'س' and several lines of text.

Handwritten text in Urdu script, partially cut off on the left edge of the page.

Handwritten Urdu text, possibly a title or a specific section header.

Handwritten Urdu text, appearing to be a list or a set of instructions.

Handwritten Urdu text, continuing the list or instructions.

Handwritten Urdu text, possibly a sub-section or a specific note.

Handwritten Urdu text, continuing the list or instructions.

Handwritten Urdu text, possibly a sub-section or a specific note.

Handwritten Urdu text, possibly a sub-section or a specific note.

Handwritten Urdu text, possibly a sub-section or a specific note.

Handwritten Urdu text, possibly a sub-section or a specific note.

Handwritten text in Urdu script, located on the right page of the document.

Handwritten text in a cursive script, likely a letter or document, covering the left side of the page.

Handwritten text in a cursive script, possibly a signature or a specific heading, located in the middle section of the page.

Handwritten text in a cursive script, appearing to be a name or a title, located in the middle section of the page.

Handwritten text in a cursive script, covering the right side of the page, possibly a continuation of the letter or document.

Handwritten text in a cursive script, located at the bottom right corner of the page.

Handwritten text in a cursive script, likely a continuation from the reverse side of the page. The text is dense and fills the right half of the page.

Handwritten text in a cursive script, continuing the narrative or list. It includes several lines of text with some larger, possibly decorative or significant words.

Handwritten text in a cursive script, appearing as a distinct section or entry within the larger text.

Handwritten text in a cursive script, continuing the main body of text on the page.

Handwritten text in a cursive script, possibly a concluding section or a specific note at the bottom of the page.

Handwritten text in a cursive script, enclosed within a rectangular border. This section appears to be a formal or structured part of the document, possibly a list or a set of instructions.

صاحب السیف و شمشیر
کمالی و شمشیر و شمشیر
کمالی و شمشیر و شمشیر

کمالی و شمشیر و شمشیر
کمالی و شمشیر و شمشیر
کمالی و شمشیر و شمشیر

کمالی و شمشیر و شمشیر
کمالی و شمشیر و شمشیر
کمالی و شمشیر و شمشیر

کمالی و شمشیر و شمشیر
کمالی و شمشیر و شمشیر
کمالی و شمشیر و شمشیر

کمالی و شمشیر و شمشیر
کمالی و شمشیر و شمشیر
کمالی و شمشیر و شمشیر

کمالی و شمشیر و شمشیر
کمالی و شمشیر و شمشیر
کمالی و شمشیر و شمشیر

کمالی و شمشیر و شمشیر
کمالی و شمشیر و شمشیر
کمالی و شمشیر و شمشیر

کمالی و شمشیر و شمشیر
کمالی و شمشیر و شمشیر
کمالی و شمشیر و شمشیر

کمالی و شمشیر و شمشیر
کمالی و شمشیر و شمشیر
کمالی و شمشیر و شمشیر

Handwritten text in a cursive script, likely a list or index, with several lines of text.

Handwritten text in a cursive script, appearing to be a title or introductory section.

Handwritten text in a cursive script, containing a large block of text with some bolded or emphasized words.

Handwritten text in a cursive script, continuing the main body of the document.

Handwritten text in a cursive script, appearing to be a concluding or summary section.

Handwritten text at the bottom of the page, possibly a signature or a reference.

Handwritten text in Arabic script, top right section.

Main body of handwritten text in Arabic script, middle section.

Handwritten text in Arabic script, bottom middle section.

Small handwritten notes or signatures on the left side of the bottom section.

Small handwritten notes or signatures on the right side of the bottom section.

Large handwritten text in Arabic script, top left section.

Handwritten text in a cursive script, likely a continuation from the reverse side of the page.

Handwritten text in a cursive script, possibly a signature or a specific note.

325
47

Handwritten text in a cursive script, possibly a signature or a specific note.

Handwritten text in a cursive script, possibly a signature or a specific note.

Handwritten text in a cursive script, possibly a signature or a specific note.

Handwritten text in a cursive script, likely a list or account. The text is written in a dark ink on aged paper. It begins with a large initial letter, possibly 'A', followed by several lines of text. The script is dense and characteristic of historical documents.

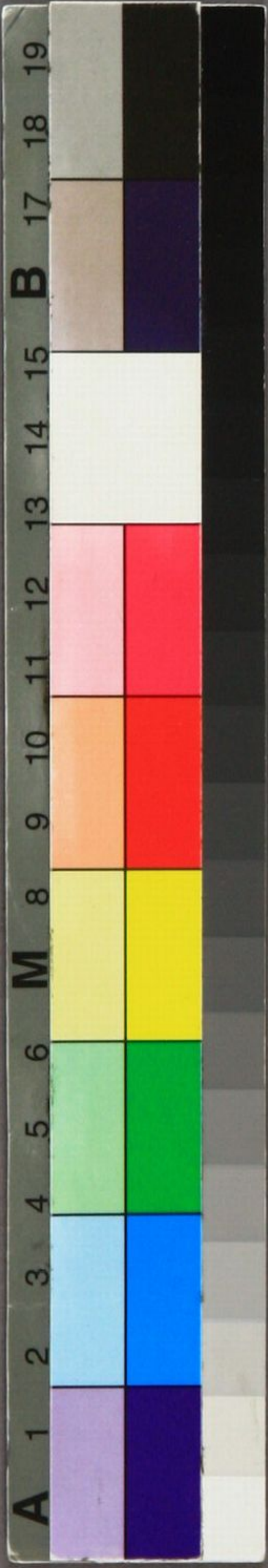
Handwritten text in a cursive script, continuing the list or account. It features several lines of text with varying lengths and some larger initial letters. The handwriting is consistent with the previous block.

Handwritten text in a cursive script, possibly a signature or a specific entry. It includes a large initial letter and a few lines of text. The script is highly stylized and characteristic of the period.

Handwritten text in a cursive script, likely a list or account. It begins with a large initial letter, possibly 'A', followed by several lines of text. The script is dense and characteristic of historical documents. A circled number '11' is visible at the bottom right of this section.

Handwritten text in black ink, likely a list or notes, located on the right side of the page. The text is written vertically and includes several lines of characters.

Handwritten text in red ink, likely a list or notes, located on the right side of the page. The text is written vertically and includes several lines of characters.



美妙晚年書目簡草稿



本問文庫
文庫 14
C137





美妙晚年書簡草稿



本間文庫
文庫 14
C137

