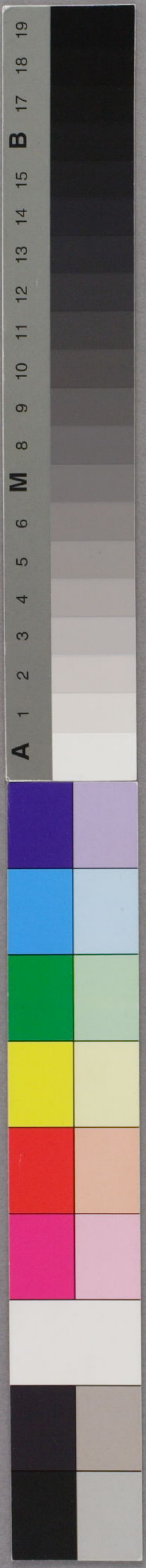


Handwritten Japanese text on a red grid background. The text is written in cursive (sōsho) style. The characters are arranged in two columns, with the right column being slightly higher. The text appears to be a signature or a name, possibly 'Shirayama' (白山) and 'Kōchō' (香蝶).









樋口一葉歌稿



特別  
文庫14  
B96



樋口一葉歌稿



わが著明治文學史下巻の収の原稿より一葉不造の  
蕪まの紙のそひ行てゆか有ひしり、妻共との好みあり

幸河人  
十

