



Handwritten Japanese calligraphy in cursive style (sōsho). The text is arranged in two columns, reading from right to left. The right column contains the characters 花 (flower) and 鳥 (bird). The left column contains the characters 山 (mountain) and 水 (water). The characters are written in a fluid, interconnected manner.



Handwritten cursive characters, likely the start of a signature or name.

Handwritten cursive characters, possibly a middle character or part of a name.

Handwritten cursive characters, possibly a middle character or part of a name.

Handwritten cursive characters, possibly a middle character or part of a name.

Handwritten cursive characters, possibly a middle character or part of a name.

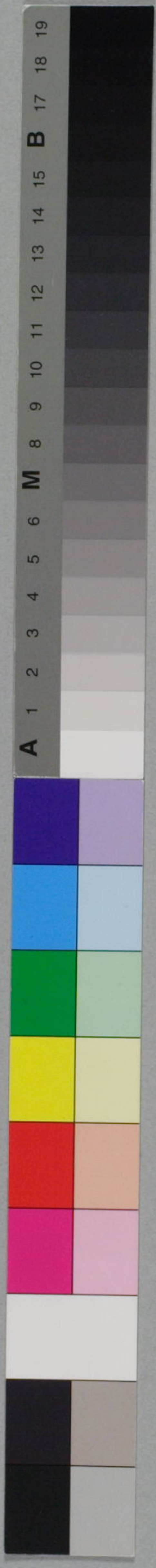
Handwritten cursive characters, possibly a middle character or part of a name.

Handwritten cursive characters, possibly a middle character or part of a name.

Handwritten cursive characters, possibly a middle character or part of a name.

Handwritten cursive characters, possibly a middle character or part of a name.

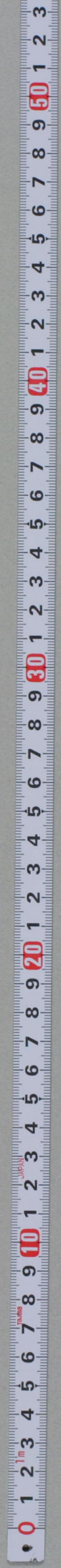
Handwritten cursive characters, possibly a middle character or part of a name.



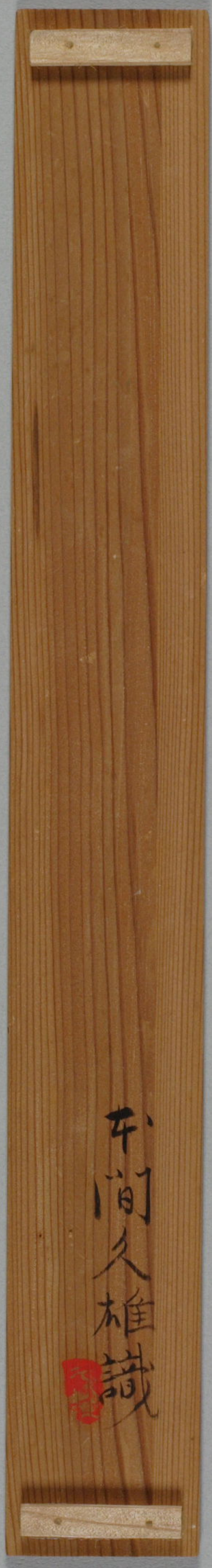
五十嵐力先生和歌(巻序)



本間文庫
文庫 14
B 59



五十嵐力先生
述懐の歌



車間久雄識

