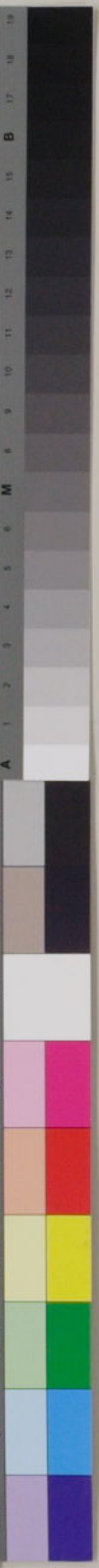


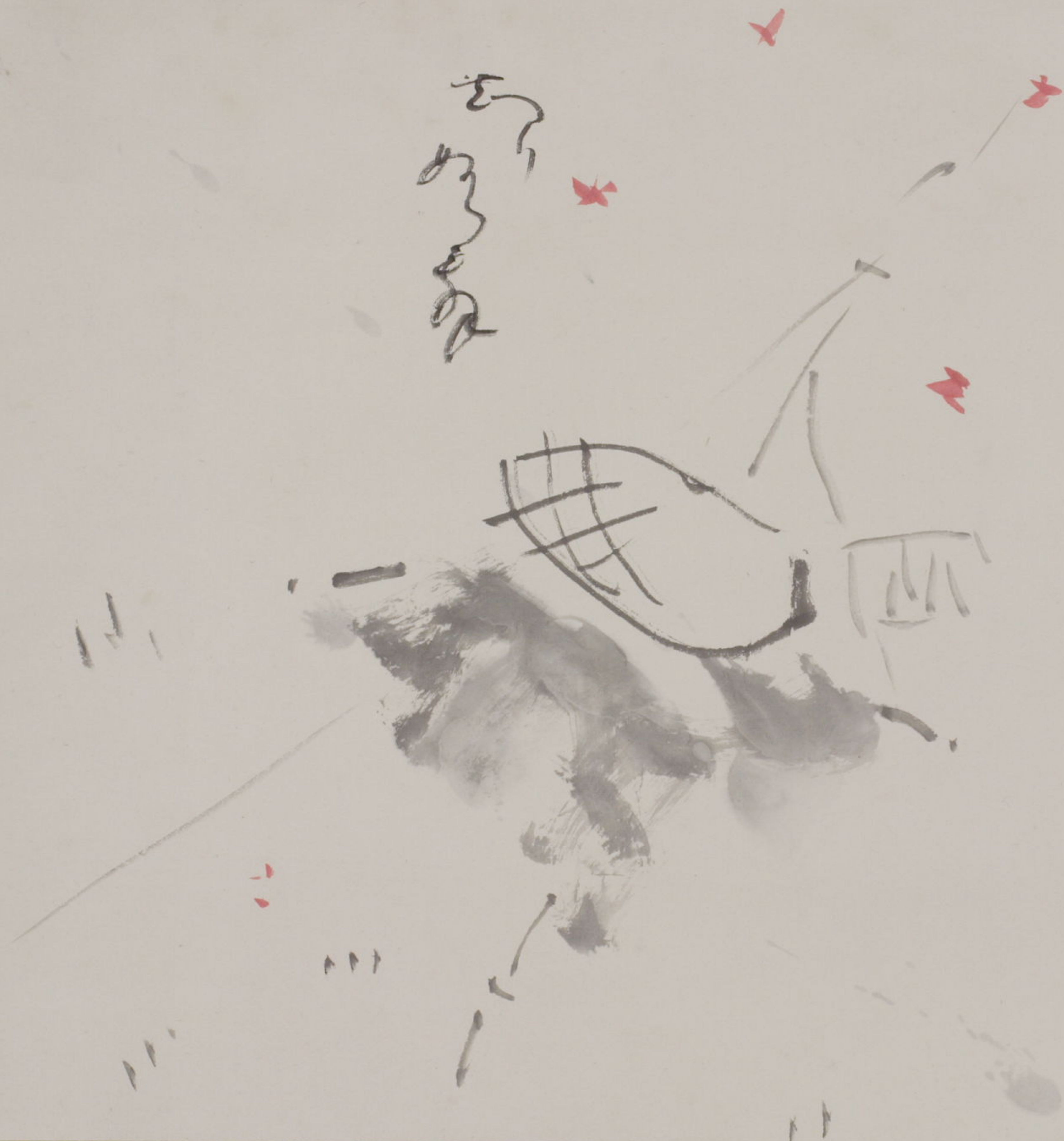
こころ  
又

えんじのこころ  
かろ  
かろ  
かろ  
かろ  
かろ

えんじ

970 1 2 3 4 5 6 7 8 9 10 11 12 13 14 15 16 17 18 19  
100 1 2 3 4 5 6 7 8 9 10 11 12 13 14 15 16 17 18 19  
110 1 2 3 4 5 6 7 8 9 10 11 12 13 14 15 16 17 18 19  
120 1 2 3 4 5 6 7 8 9 10 11 12 13 14 15 16 17 18 19  
130 1 2 3 4 5 6 7 8 9 10 11 12 13 14 15 16 17 18 19  
140 1 2 3 4 5 6 7 8 9 10 11 12 13 14 15 16 17 18 19  
150 1 2 3 4 5 6 7 8 9 10 11 12 13 14 15 16 17 18 19  
160 1 2 3 4 5 6 7 8 9 10 11 12 13 14 15 16 17 18 19  
170 1 2 3 4 5 6 7 8 9 10 11 12 13 14 15 16 17 18 19  
180 1 2 3 4 5 6 7 8 9 10 11 12 13 14 15 16 17 18 19  
190 1 2 3 4 5 6 7 8 9 10 11 12 13 14 15 16 17 18 19  
200 1 2 3 4 5 6 7 8 9 10 11 12 13 14 15 16 17 18 19  
210 1 2 3 4 5 6 7 8 9 10 11 12 13 14 15 16 17 18 19  
220 1 2 3 4 5 6 7 8 9 10 11 12 13 14 15 16 17 18 19  
230 1 2 3 4 5 6 7 8 9 10 11 12 13 14 15 16 17 18 19  
240 1 2 3 4 5 6 7 8 9 10 11 12 13 14 15 16 17 18 19  
250 1 2 3 4 5 6 7 8 9 10 11 12 13 14 15 16 17 18 19  
260 1 2 3 4 5 6 7 8 9 10 11 12 13 14 15 16 17 18 19  
270 1 2 3 4 5 6 7 8 9 10 11 12 13 14 15 16 17 18 19  
280 1 2 3 4 5 6 7 8 9 10 11 12 13 14 15 16 17 18 19  
290 1 2 3 4 5 6 7 8 9 10 11 12 13 14 15 16 17 18 19  
300 1 2 3 4 5 6 7 8 9 10 11 12 13 14 15 16 17 18 19





Handwritten Japanese calligraphy in cursive style (sōsho). The text is arranged in three vertical columns, reading from right to left. The characters are fluid and expressive, typical of a personal note or a signature.

Handwritten Japanese calligraphy in cursive style (sōsho), located at the bottom right of the page. It appears to be a signature or a short inscription.





道遠筆宗山子画讚



宗山文庫  
文庫 14  
B41



榎内道彦博士著

詞並書

桑山子



算水學人記



三藏