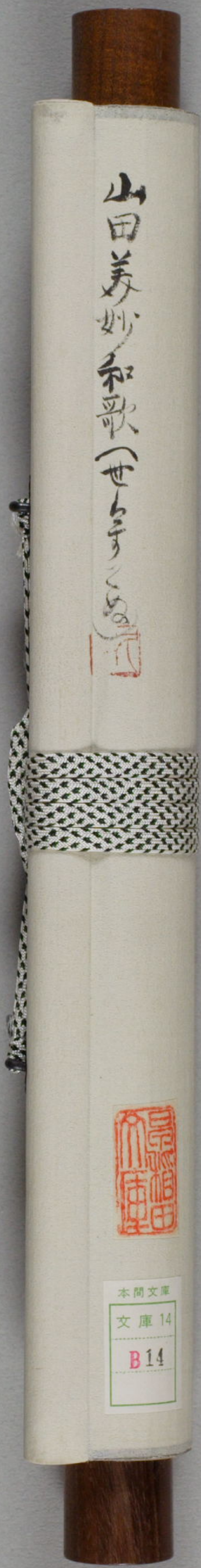
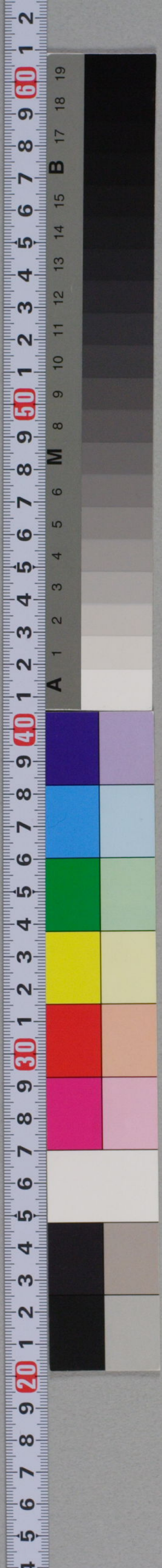




Handwritten text on a central paper label, likely in Arabic or Persian script. The text is arranged in several lines, with some characters appearing to be part of a title or a specific phrase. The script is cursive and well-defined.



山田美妙和歌(世々)
美妙



本間文庫
文庫 14
B14

山田美妙和歌

(世をすゑぬ)

中
間
久
雄
藏

