

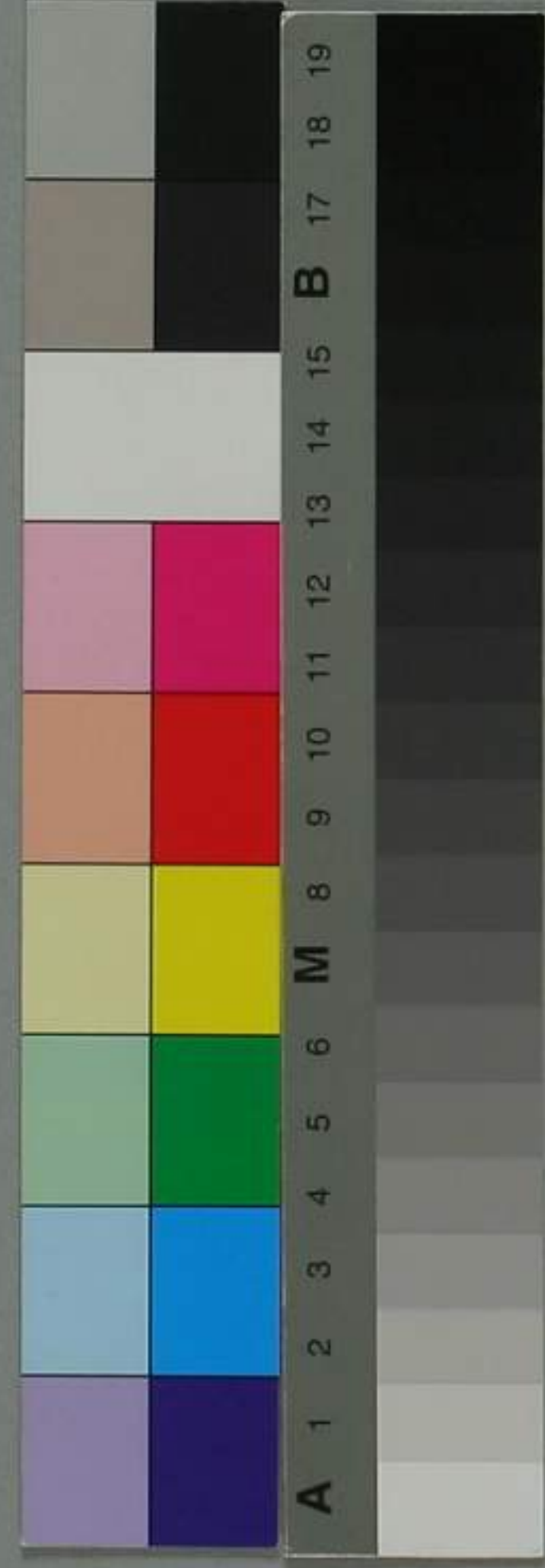


Handwritten Japanese text in a grid format, likely a ledger or account book. The text is written in a cursive style (sōsho) and is organized into columns and rows. The grid is divided into sections by vertical lines. The text is written in black ink on a light-colored paper. There are some red markings and a vertical line through the middle of the grid. The text is written in a vertical orientation, reading from right to left.









特別  
文庫14  
A81

紅葉金色夜叉原稿新本





尾崎紅葉金色夜叉原稿断片





金色夜叉續々巻四章の筋

中野 雄次郎

