

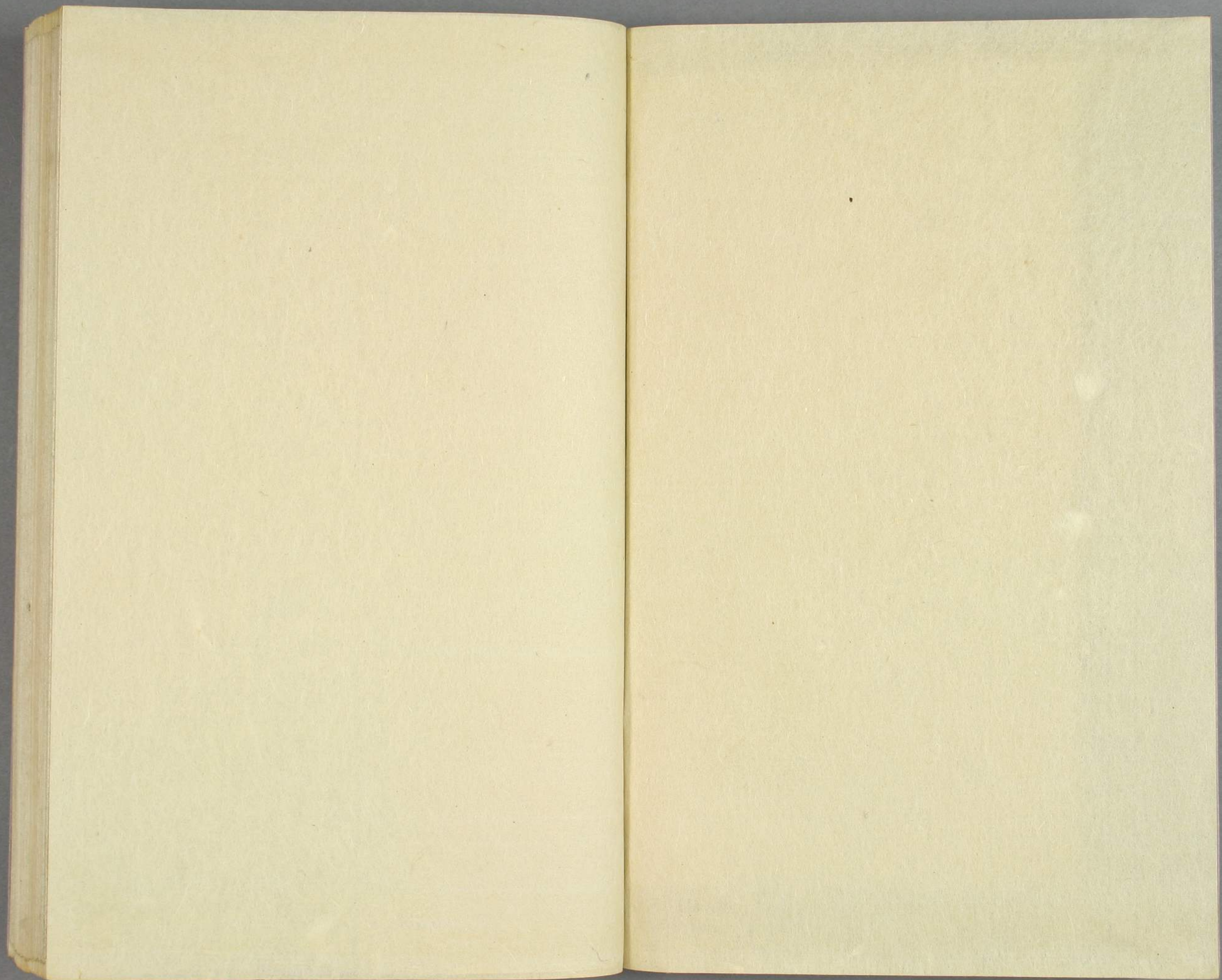


艳狩劔本地



本間文庫
文庫 14
A 73





地
在
河
南
省

の註釋(一)御惱——
敬語。もくろく。例。(二)有験の——
加功祈禱の効験有る。ちとぬ。了。了。了。
の徳の——
——祈禱の敬称。(三)五満——
泉苑——京都三條大宮通の西。今は護国寺
の布。地域。行。園の四称。桓武天皇の
方八町。時々御遊覧あり。後世に
乾臨園——
あふるを祈——

らふ——
らひ室藤——
羽の長針。(一)から——
らち埜の轉。カカハコム。カ九井ちた刀
——
と目的——
もたに——
裏、その——
ぬら。三内侍——
命婦——

Handwritten text in a cursive script, likely a letter or a journal entry. The text is written in a fluid, connected style across several lines.

Handwritten text in a cursive script, likely a letter or a journal entry. The text is written in a fluid, connected style across several lines.

歌、の目録、こゝにあり。

の註釋(一)三鳴弦——葦目の箭を放つ時の式、
魔を退け、こゝにあり、こゝにあり、こゝにあり、

「二三」よつと放す——しつゝ能くしつゝ

放す。「二四」こゝにあり、こゝにあり、こゝにあり、

飛ぶ行く音、はつた、こゝにあり、こゝにあり、

御殿の檜皮——葦裏の御殿の御座根の檜皮。

是等御座根、檜皮で葺いた。「二六」名にあり、剛

の右——名にあり、剛の右、こゝにあり、こゝにあり、

用ひ、こゝにあり、こゝにあり、こゝにあり、

主上、こゝにあり、こゝにあり、

〔本〕

出で、こゝにあり、こゝにあり、

こゝにあり、こゝにあり、こゝにあり、

こゝにあり、こゝにあり、こゝにあり、

こゝにあり、こゝにあり、こゝにあり、

こゝにあり、こゝにあり、こゝにあり、

こゝにあり、こゝにあり、こゝにあり、

こゝにあり、こゝにあり、こゝにあり、

こゝにあり、こゝにあり、こゝにあり、

کتابت شد در روز ۱۳۰۳ هجری قمری
در شهر تبریز در کتابخانه
مکتب خانوادگی حضرت آقا
محمد باقر خراسانی
محقق کتابت: آقا میرزا
محمد باقر خراسانی
تبریز ۱۳۰۳

کتابت شد در روز ۱۳۰۳ هجری قمری
در شهر تبریز در کتابخانه
مکتب خانوادگی حضرت آقا
محمد باقر خراسانی
محقق کتابت: آقا میرزا
محمد باقر خراسانی
تبریز ۱۳۰۳

Handwritten text in Arabic script, likely a list or index. The text is written in a cursive style and includes several entries, some of which are enclosed in brackets. The entries appear to be names or titles, possibly related to a collection or a specific subject. The text is arranged in a vertical column on the page.

Handwritten text in Arabic script, continuing the list or index from the previous page. The text is written in a cursive style and includes several entries, some of which are enclosed in brackets. The entries appear to be names or titles, possibly related to a collection or a specific subject. The text is arranged in a vertical column on the page.

Handwritten musical notation on the left page, consisting of several staves of notes and rests.

Handwritten musical notation on the right page, continuing the piece from the left page.

Handwritten text in Arabic script, likely a list or index. The text is written in a cursive style and includes several entries with numbers in parentheses. The entries are arranged in a vertical column, with some lines starting with a tilde (~) symbol. The text is written on the left page of an open book.

Handwritten text in Arabic script, likely a list or index. The text is written in a cursive style and includes several entries with numbers in parentheses. The entries are arranged in a vertical column, with some lines starting with a tilde (~) symbol. The text is written on the right page of an open book.

おんごころ。

（註釈）〔十二〕おんごころ — 心の奥の奥の奥

〜 形、心、*十三項。〔十三〕おんごころ —



おんごころ。解、おんごころ。おんごころおんごころ

おんごころおんごころおんごころおんごころおんごころ

おんごころおんごころおんごころおんごころおんごころ

おんごころおんごころおんごころおんごころおんごころ

おんごころおんごころおんごころおんごころおんごころ

おんごころおんごころおんごころおんごころおんごころ

おんごころおんごころおんごころおんごころおんごころ

おんごころおんごころおんごころおんごころおんごころ

おんごころおんごころおんごころおんごころおんごころ

おんごころおんごころおんごころおんごころおんごころ

おんごころおんごころおんごころおんごころおんごころ

おんごころおんごころおんごころおんごころおんごころ

おんごころおんごころおんごころおんごころおんごころ

おんごころおんごころおんごころおんごころおんごころ

おんごころおんごころおんごころおんごころおんごころ

おんごころおんごころおんごころおんごころおんごころ

Handwritten text in Arabic script, likely a religious or philosophical treatise. The text is written in a cursive style and spans the width of the page. It begins with a large initial letter, possibly 'Bismillah' or a similar invocation. The script is dense and fills most of the page.

Handwritten text in Arabic script, continuing the text from the previous page. It features a prominent, large, decorative initial letter, possibly 'Bismillah' or a similar invocation. The script is dense and fills most of the page.

Handwritten text in a cursive script, likely a mix of Latin and Japanese characters. The text is arranged in several lines, with some characters enclosed in brackets. The script is dense and fluid, characteristic of early modern Japanese handwriting.

Handwritten text in a cursive script, similar to the left page. It features a mix of Latin and Japanese characters, with some characters enclosed in brackets. The text is arranged in several lines, continuing the style of the previous page.

Handwritten text in a cursive script, likely a personal letter or diary entry. The text is written in a fluid, connected style across approximately 12 lines. The ink is dark and the paper shows signs of age.

【本文】
Handwritten text in a cursive script, starting with a bracketed header. The text is written in a fluid, connected style across approximately 12 lines. The ink is dark and the paper shows signs of age.

