

白川

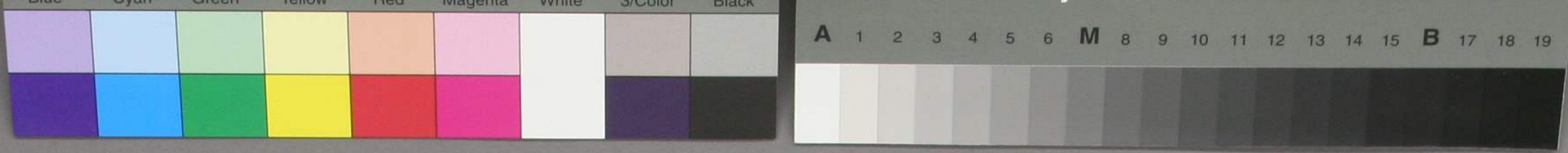
Large calligraphic character '山' (Mountain) in bold black ink, set within a faint circular seal impression.

Vertical calligraphic text in cursive script, including characters like '山', '川', and '水' (Water), with a faint circular seal impression behind it.

Large calligraphic character '水' (Water) in bold black ink, set within a faint circular seal impression.

白川





Calligraphy of the characters '茶' (Tea) in cursive style, written on a piece of paper with a circular orange seal impression. The characters are written in black ink with varying line thicknesses, characteristic of cursive calligraphy. The seal impression is faint and circular, located behind the characters.

茶

茶

茶

茶



特別
文庫12
76
2

