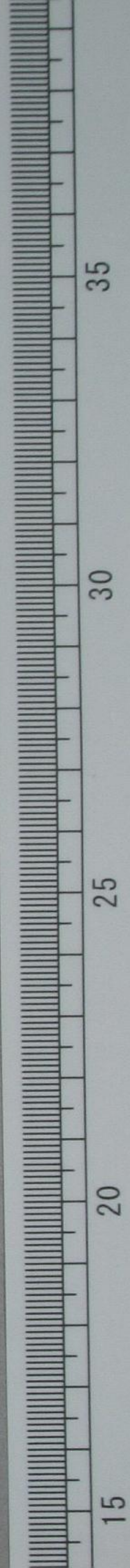


海山先生別編

卷之上

柳田文庫  
文庫11  
A1556



文庫11  
A 1556

48-8744

○ 下へまゝ部

○ 小学校教道すの説

○ 入字の説

○ 五感と教り説

○ 世奥の一口説

○ 筆術と教り説

○ 冊の子と教りつと譯とみる説

○ 朝顔と鶏頭の説

○ 帯と袴の説

○ 梅と柏と竹の説

○ 帯の巻と袴の巻

○ 下のまゝ部



西洋七字富理初編卷之二

南洋

瓜生政和編集

○十学校教導の記

西洋七字富理初編卷之二  
 南洋  
 瓜生政和編集  
 ○十学校教導の記  
 一、学校の目的  
 二、学校の種類  
 三、学校の設備  
 四、学校の運営  
 五、学校と社会との関係  
 六、学校と家庭との関係  
 七、学校と宗教との関係  
 八、学校と政治との関係  
 九、学校と経済との関係  
 十、学校と文化との関係



Handwritten text in a cursive style, possibly a letter or a journal entry. The text is dense and covers most of the page.

Handwritten text in a cursive style, continuing from the previous page or as a separate entry. It includes some distinct characters and symbols.

Handwritten text in a cursive style, likely a continuation of the previous page's content. The script is consistent with the other pages.







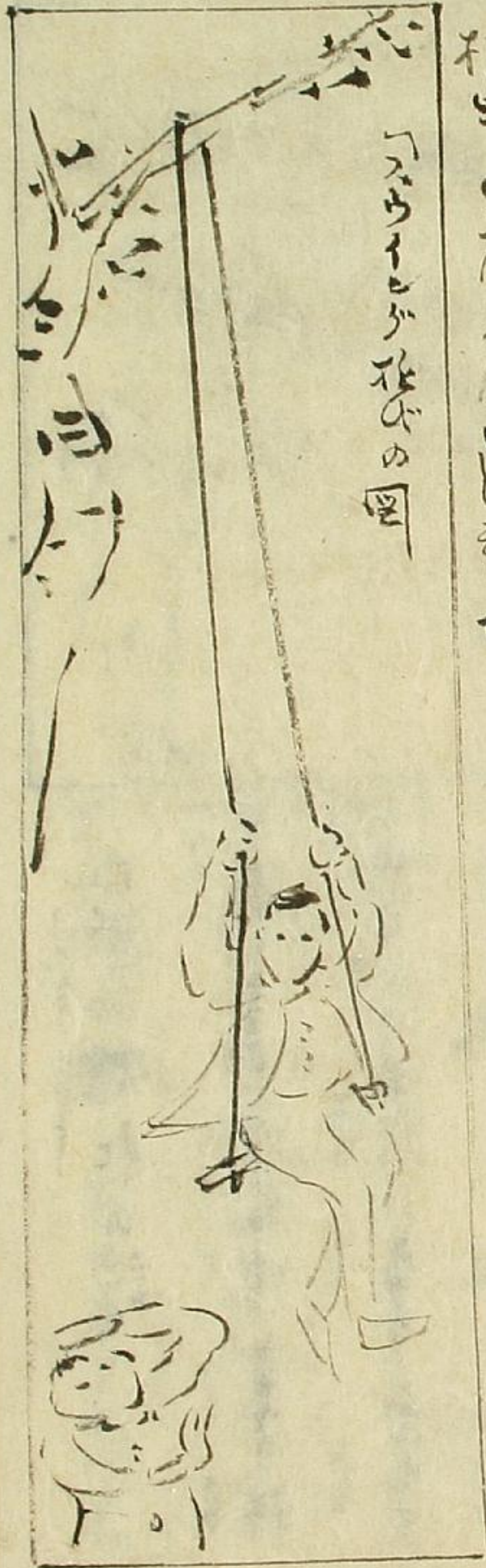






一、その教の心と實の感とを合一せしむる事  
 二、その教の心と實の感とを合一せしむる事  
 三、その教の心と實の感とを合一せしむる事  
 四、その教の心と實の感とを合一せしむる事  
 五、その教の心と實の感とを合一せしむる事  
 六、その教の心と實の感とを合一せしむる事  
 七、その教の心と實の感とを合一せしむる事  
 八、その教の心と實の感とを合一せしむる事  
 九、その教の心と實の感とを合一せしむる事  
 十、その教の心と實の感とを合一せしむる事

五感の心と實の感とを合一せしむる事  
 六、その教の心と實の感とを合一せしむる事  
 七、その教の心と實の感とを合一せしむる事  
 八、その教の心と實の感とを合一せしむる事  
 九、その教の心と實の感とを合一せしむる事  
 十、その教の心と實の感とを合一せしむる事













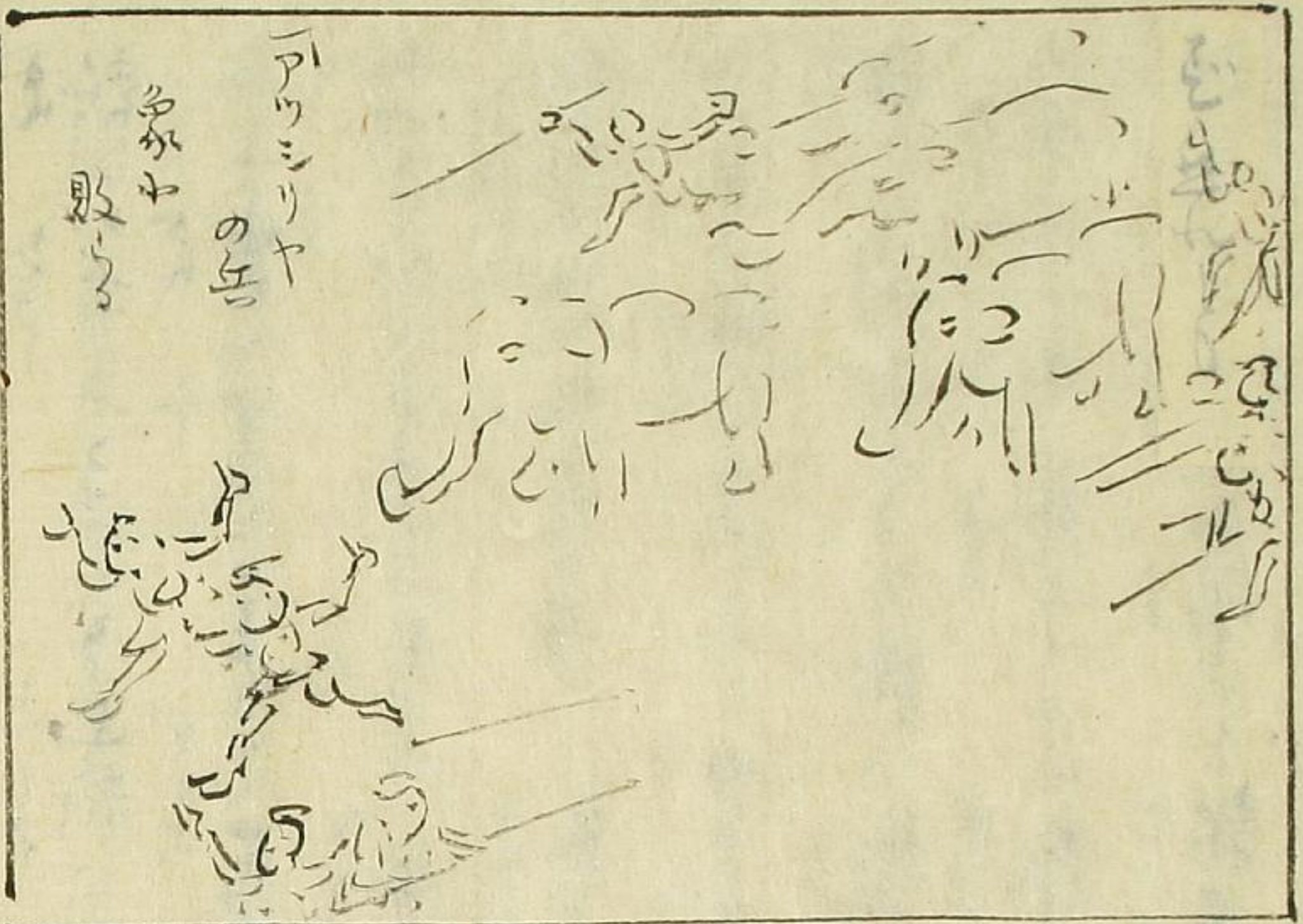


Handwritten text in a cursive script, likely a historical document or letter. The text is written in a dark ink on aged, yellowish paper. It consists of several lines of text, with some words appearing to be in a different language or dialect than the surrounding text. The script is fluid and somewhat slanted. The text is arranged in a single column on the right page of the open book.

Handwritten text in a cursive script, similar to the text on the right page. This text is written on the left page of the open book. It also consists of several lines of text, with some words appearing to be in a different language or dialect. The script is consistent with the one on the right page, suggesting they are part of the same document or a related one. The text is arranged in a single column on the left page.

Handwritten text in Arabic script, consisting of several lines of dense cursive writing.

Handwritten text in Arabic script, consisting of several lines of dense cursive writing.



Handwritten text in a cursive script, likely a form of Arabic or Persian, positioned below the drawing. The text is arranged in several lines, with some words appearing to be repeated or in a specific sequence.

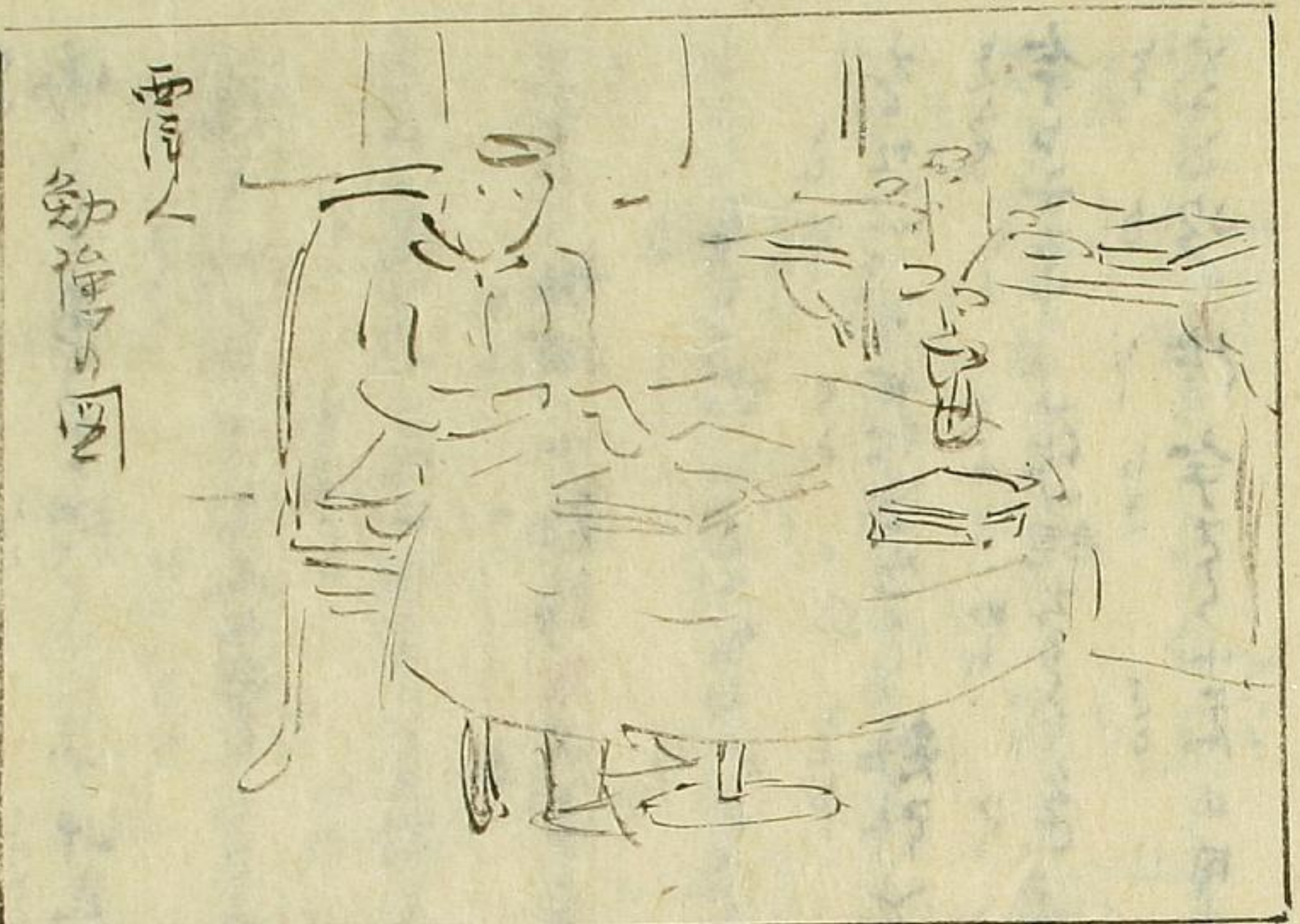
Large blocks of handwritten text in a cursive script, likely a form of Arabic or Persian, covering most of the left page. The text is arranged in several columns, with some words appearing to be repeated or in a specific sequence. There are some smaller annotations or corrections interspersed within the main text.

Handwritten text in Arabic script on the right page, with marginalia in Latin script. The text appears to be a list or a series of entries, possibly related to a collection or inventory. The Latin marginalia include words like "this", "the", "of", "in", "at", "on", "with", "without", "by", "for", "to", "from", "of", "in", "at", "on", "with", "without", "by", "for", "to", "from".

Handwritten text in Arabic script on the left page, with marginalia in Latin script. The text appears to be a list or a series of entries, possibly related to a collection or inventory. The Latin marginalia include words like "this", "the", "of", "in", "at", "on", "with", "without", "by", "for", "to", "from", "of", "in", "at", "on", "with", "without", "by", "for", "to", "from".



Handwritten text in Arabic script, likely a manuscript or a collection of poems. The text is arranged in several lines, with some words written in red ink (rubrication). The script is dense and cursive, typical of historical Arabic manuscripts.



Handwritten text in Arabic script, continuing from the top page. The text is arranged in several lines, with some words written in red ink. The script is dense and cursive, typical of historical Arabic manuscripts.

Handwritten text in Arabic script, consisting of approximately 12 lines. The script is dense and cursive, with some red ink used for emphasis or correction. The text appears to be a religious or scholarly passage.

Handwritten text in Arabic script, consisting of approximately 12 lines. The script is dense and cursive, similar to the text on the opposite page. It includes some red ink markings and appears to be a continuation of a religious or scholarly work.







Handwritten text in a cursive script, likely a historical document or manuscript. The text is arranged in several lines across the page, with some characters appearing to be in a different script or dialect. The ink is dark and the paper shows signs of age.

Handwritten text in a cursive script, similar to the page on the right. The text is arranged in several lines across the page, with some characters appearing to be in a different script or dialect. The ink is dark and the paper shows signs of age.



Handwritten text in Arabic script, likely a list or account. The text is arranged in several lines, with some words written vertically. The script is cursive and includes various diacritics. The text appears to be a record of transactions or a list of items, possibly related to a business or administrative matter. The words are difficult to decipher due to the cursive style and the lack of a key.

Handwritten text in Arabic script, similar to the text on the opposite page. It consists of several lines of cursive writing, with some words written vertically. The text is dense and appears to be a continuation of the record or list on the previous page. The script is consistent with the one on the other page, suggesting a single author or scribe.





Handwritten text in Arabic script, likely a religious or philosophical treatise. The text is arranged in several lines, with some words written in larger, bolder script (possibly indicating emphasis or specific terms). The ink is dark and the paper shows signs of age.

Handwritten text in Arabic script, continuing the text from the previous page. The script is dense and fills most of the page. There are some marginal notes or corrections visible on the left side of the page.

12  
 13  
 14  
 15  
 16  
 17  
 18  
 19  
 20  
 21  
 22  
 23  
 24  
 25  
 26  
 27  
 28  
 29  
 30  
 31  
 32  
 33  
 34  
 35  
 36  
 37  
 38  
 39  
 40  
 41  
 42  
 43  
 44  
 45  
 46  
 47  
 48  
 49  
 50  
 51  
 52  
 53  
 54  
 55  
 56  
 57  
 58  
 59  
 60  
 61  
 62  
 63  
 64  
 65  
 66  
 67  
 68  
 69  
 70  
 71  
 72  
 73  
 74  
 75  
 76  
 77  
 78  
 79  
 80  
 81  
 82  
 83  
 84  
 85  
 86  
 87  
 88  
 89  
 90  
 91  
 92  
 93  
 94  
 95  
 96  
 97  
 98  
 99  
 100

1  
 2  
 3  
 4  
 5  
 6  
 7  
 8  
 9  
 10  
 11  
 12  
 13  
 14  
 15  
 16  
 17  
 18  
 19  
 20  
 21  
 22  
 23  
 24  
 25  
 26  
 27  
 28  
 29  
 30  
 31  
 32  
 33  
 34  
 35  
 36  
 37  
 38  
 39  
 40  
 41  
 42  
 43  
 44  
 45  
 46  
 47  
 48  
 49  
 50  
 51  
 52  
 53  
 54  
 55  
 56  
 57  
 58  
 59  
 60  
 61  
 62  
 63  
 64  
 65  
 66  
 67  
 68  
 69  
 70  
 71  
 72  
 73  
 74  
 75  
 76  
 77  
 78  
 79  
 80  
 81  
 82  
 83  
 84  
 85  
 86  
 87  
 88  
 89  
 90  
 91  
 92  
 93  
 94  
 95  
 96  
 97  
 98  
 99  
 100





Handwritten text in a cursive script, likely a historical document or manuscript. The text is arranged in several lines across the page, with some words appearing to be in a different language or dialect than the surrounding text. The ink is dark and the paper shows signs of age.

Handwritten text in a cursive script, similar to the text on the opposite page. This page contains several lines of text, with some words appearing to be in a different language or dialect. The handwriting is consistent with the other page, suggesting a continuous document or a similar source.



Handwritten text in a cursive script, likely a historical document or manuscript. The text is arranged in several lines, with some words appearing to be in a different language or dialect. The script is dense and difficult to decipher without specialized knowledge.

Handwritten text in a cursive script, similar to the one on the opposite page. The text is arranged in several lines, with some words appearing to be in a different language or dialect. The script is dense and difficult to decipher without specialized knowledge.

えい 一いれ いん 勤 けん 固 こ 若 じやく 若 じやく 若 じやく 若 じやく 若 じやく  
えい いん けん こ じやく じやく じやく じやく じやく じやく  
志 いん 志 けん 志 こ 志 じやく 志 じやく 志 じやく 志 じやく 志 じやく  
志 いん けん こ じやく じやく じやく じやく じやく じやく  
一 いん けん こ じやく じやく じやく じやく じやく じやく

志 いん 志 けん 志 こ 志 じやく 志 じやく 志 じやく 志 じやく 志 じやく

