



魯文祿

芳樂画

榮楽堂梓

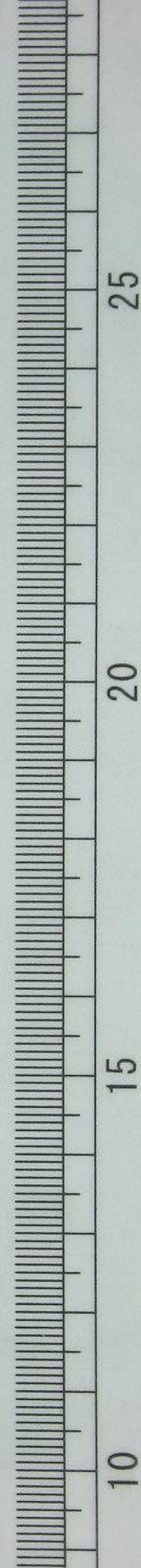
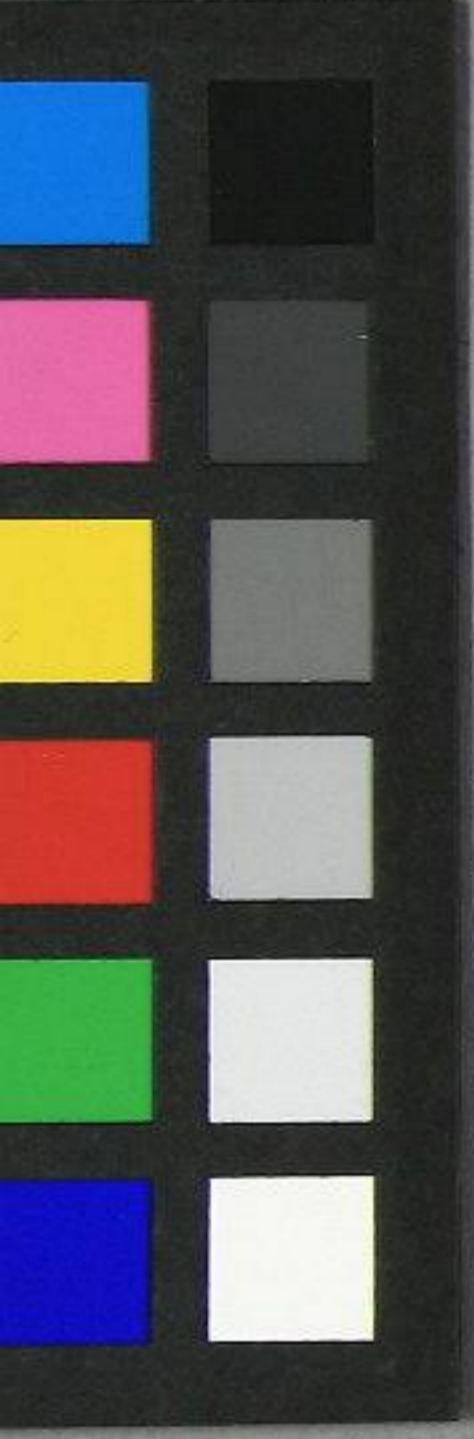
三十一編下



八世  
和形  
傳

三十一編上







A 388  
7



このまよきみ

ハチン傳

三十一一八上

る文録

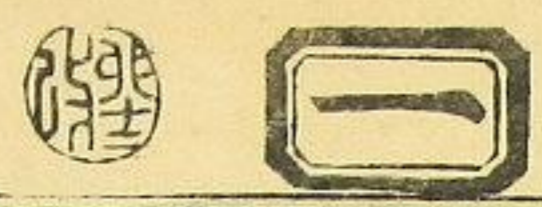
よきしき

舶來奇品水滸店

原書ハ唐山施耐庵翻案ハ皇國乃著作堂天剛地  
 魚の星員百と除きて八算の數ハ換て十露盤玉  
 二轉作二品乃一種生得水滸請賣を又取次の  
 八犬傳因む外題も讀と詞假名といふ名を賣物の  
 名聞名利蠅頭微利諸色の高價ゆひ死せんと鼻肌  
 低き見職の直段ハ志れと文人商人雷門の定店ハ飛  
 跋り変ツと轉宅告條めして序をいさるん  
 涅槃堂の  
 いろは長家の  
 假名垣魚目文戯誌

本朝魁種ハ志店

天專三十一



































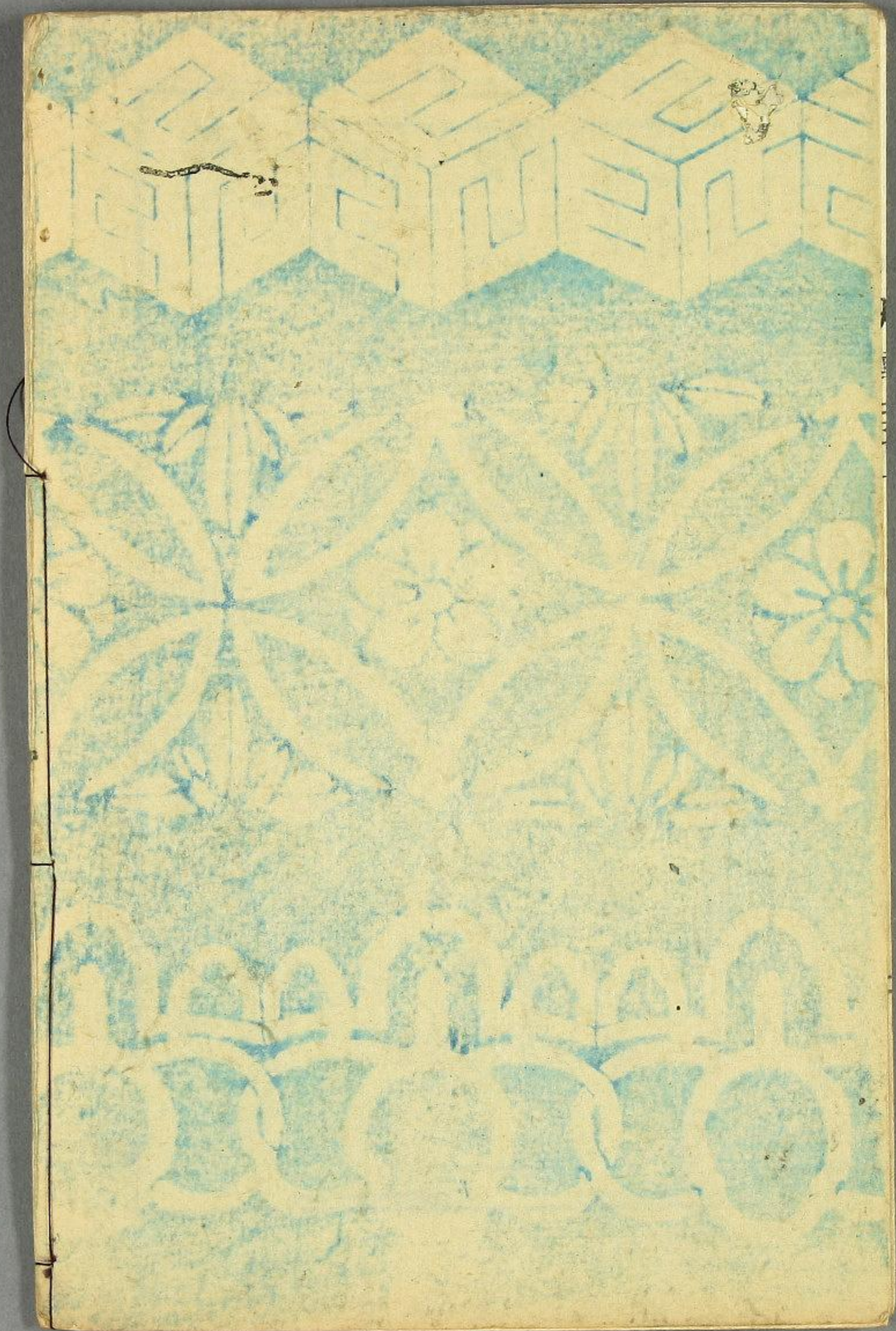








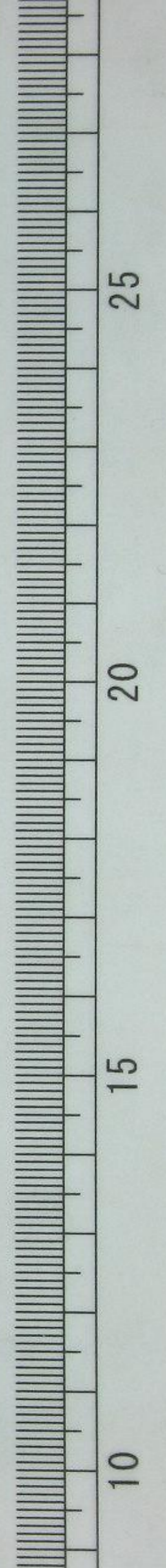






魯文祿  
芳樂画  
榮楽堂持

三十一編下











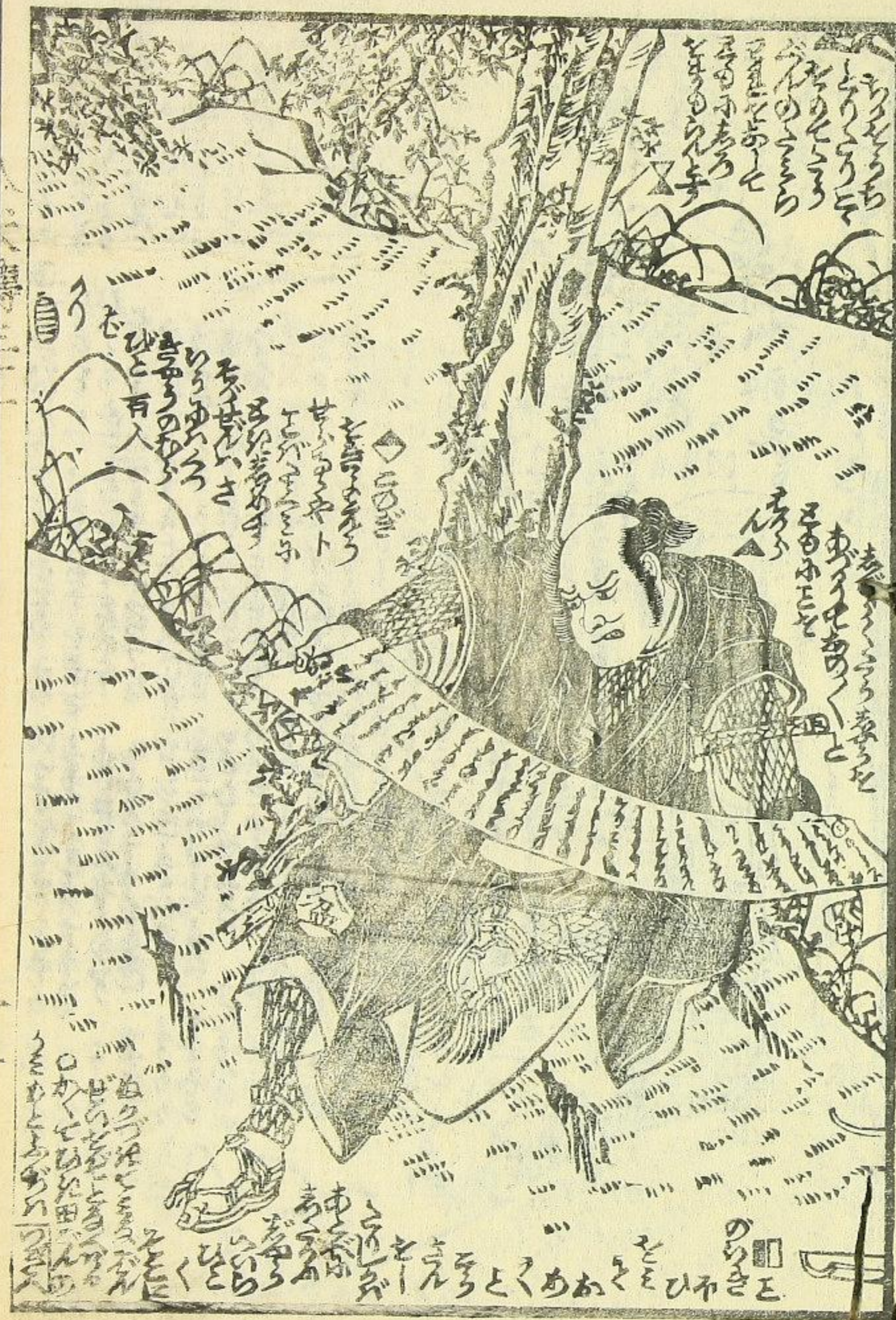




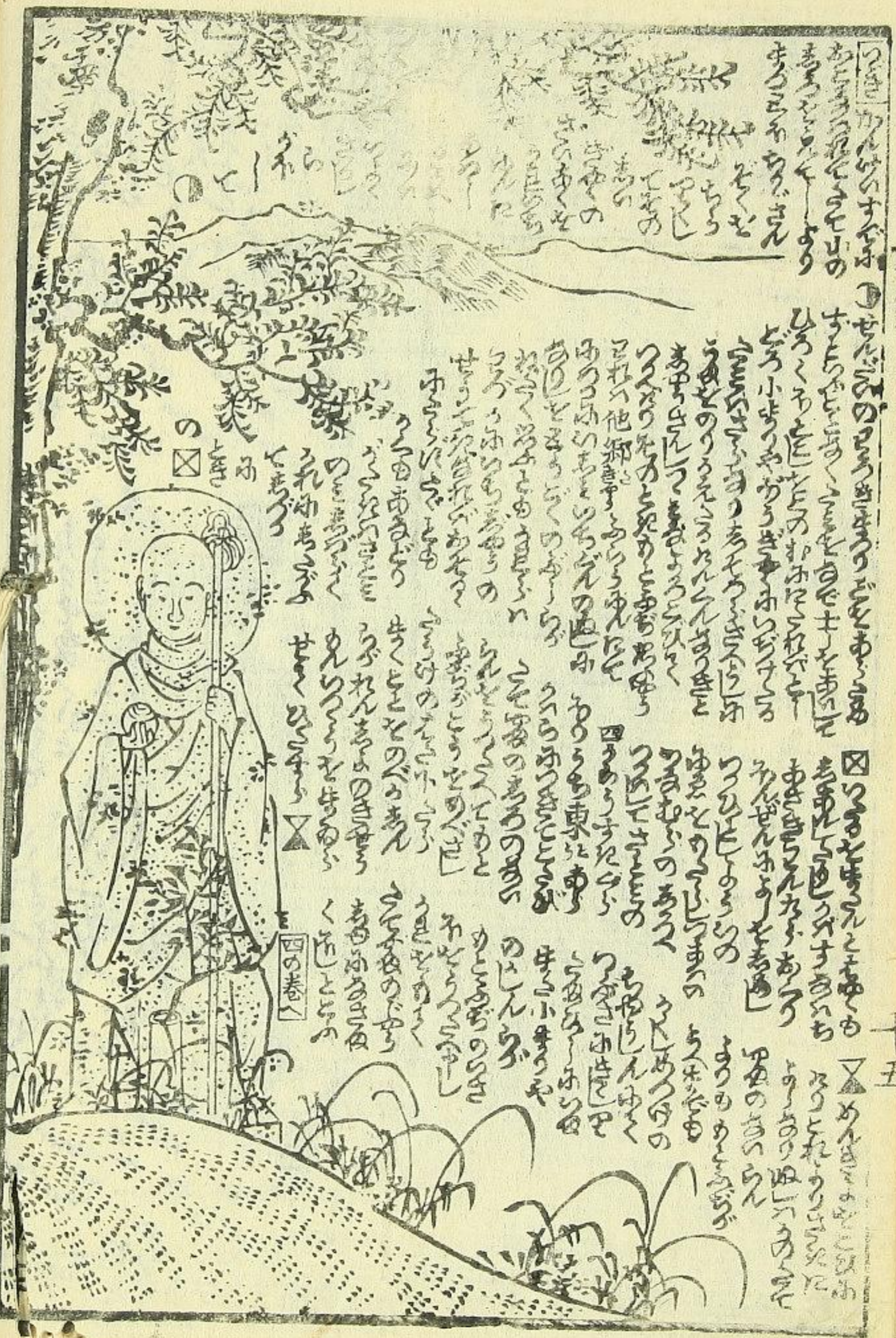












Handwritten text in a cursive script, likely Japanese, located above the illustration. The text is arranged in several vertical columns.

Handwritten text in a cursive script, likely Japanese, located to the left of the illustration. The text is arranged in several vertical columns.

Handwritten text in a cursive script, likely Japanese, located below the illustration. The text is arranged in several vertical columns.



Handwritten text in a cursive script, likely Japanese, located above the illustration. The text is arranged in several vertical columns.

Handwritten text in a cursive script, likely Japanese, located to the left of the illustration. The text is arranged in several vertical columns.

Handwritten text in a cursive script, likely Japanese, located below the illustration. The text is arranged in several vertical columns.



















此の如く... 朝霞樓... 浪輝黄金鮓... 假名垣魯文作... 朝霞樓芳幾画



假名垣魯文作 朝霞樓芳幾画

名譽の義殿  
神木金輔  
名譽の孝女  
桔豆於市

朝霞樓芳幾画  
浪輝黄金鮓

三編讀切

一 對男の縁小因の戯作劇場を二様ふ竹林多々軒人の回五葉を持さりの  
合作全備の三編冊 初編 五巻也 其水作同 有人作同 其水作同 其水作同 其水作同  
同 十一尾也 如泉作 二編 五巻也 其水作同 有人作同 其水作同 其水作同 其水作同  
三編 五巻也 其水作同 有人作同 其水作同 其水作同 其水作同 其水作同 其水作同  
定ぬ一豆小筆カを法くし写當藏板のあふぬ以同様御高評の布ふ

地草紙回屋

江戸深川佐賀町  
廣園強喜助様



