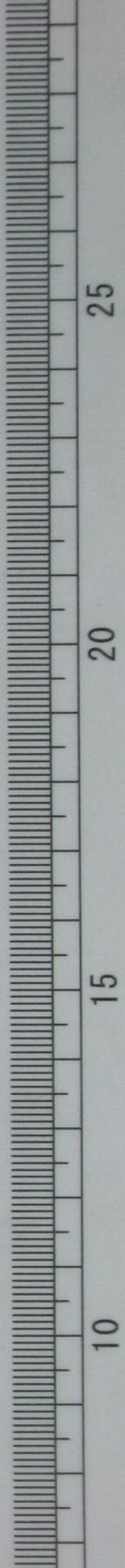


乙
子
山
竹
友
卜

柳田文庫
文庫11
A 371
2



紅印

紅印

文庫11
A371
2

48-8739

Handwritten text in a cursive script, likely a historical document or manuscript, spanning two pages. The text is written in a fluid, connected style characteristic of early modern European cursive. The ink is dark, and the paper shows signs of age, including slight discoloration and a central gutter where the pages meet. The script is dense and fills most of the page area.

Handwritten text in a cursive script, likely a historical document or manuscript. The text is written in a dark ink on aged paper. The script is highly stylized and difficult to decipher without a key. The lines of text are roughly horizontal and flow from right to left across the page.

Handwritten text in a cursive script, likely a historical document or manuscript. The text is written in a dark ink on aged paper. The script is highly stylized and difficult to decipher without a key. The lines of text are roughly horizontal and flow from right to left across the page.

Handwritten text in a cursive script, likely a letter or a page from a manuscript. The text is written in a fluid, connected style across approximately 12 lines.

Handwritten text in a cursive script, likely a letter or a page from a manuscript. The text is written in a fluid, connected style across approximately 12 lines. The name "天照太神" (Amaterasu no Mikoto) is visible in the lower portion of the text.

Handwritten text in a cursive script, likely a letter or a page from a manuscript. The text is written in dark ink on aged, yellowish paper. It consists of approximately 12 lines of text, starting with a large initial letter 'L' and ending with a signature or name.

Handwritten text in a cursive script, likely a letter or a page from a manuscript. The text is written in dark ink on aged, yellowish paper. It consists of approximately 12 lines of text, starting with a large initial letter 'L' and ending with a signature or name.

おらしきあせりてふれ
人しのあせりてふれ
にんあせりてふれ
おらしきあせりてふれ
にんあせりてふれ
おらしきあせりてふれ
にんあせりてふれ
おらしきあせりてふれ
にんあせりてふれ

おらしきあせりてふれ
にんあせりてふれ
おらしきあせりてふれ
にんあせりてふれ
おらしきあせりてふれ
にんあせりてふれ
おらしきあせりてふれ
にんあせりてふれ
おらしきあせりてふれ
にんあせりてふれ

おらしきあせりてふれ
にんあせりてふれ
おらしきあせりてふれ
にんあせりてふれ
おらしきあせりてふれ
にんあせりてふれ
おらしきあせりてふれ
にんあせりてふれ
おらしきあせりてふれ
にんあせりてふれ

千

中

カ

シ

シ

シ

シ

シ

シ

シ

シ

シ

シ

シ

シ

シ

シ

シ

シ

シ

シ

シ

シ

シ

シ

シ

Handwritten text in a cursive script, likely a historical document or manuscript. The text is written in a fluid, connected style across approximately 15 lines.

Handwritten text in a cursive script, likely a historical document or manuscript. The text is written in a fluid, connected style across approximately 15 lines.

Handwritten text in cursive script, likely a letter or document, written on the right page of an open book. The text is written in a fluid, connected style.

Handwritten text in cursive script, likely a letter or document, written on the left page of an open book. The text is written in a fluid, connected style.

Handwritten text in a cursive script, likely a historical document or letter. The text is written in a dark ink on aged, yellowish paper. It consists of approximately 15 lines of text, starting with a large initial letter. The script is highly stylized and characteristic of the Ottoman or Persian calligraphic tradition.

Handwritten text in a cursive script, continuing from the previous page. The text is written in a dark ink on aged, yellowish paper. It consists of approximately 15 lines of text, starting with a large initial letter. The script is highly stylized and characteristic of the Ottoman or Persian calligraphic tradition.

Handwritten text in a cursive script, likely a musical score or a list of notes, spanning the right page of the manuscript.

Handwritten text in a cursive script, likely a musical score or a list of notes, spanning the left page of the manuscript.

Handwritten text in a cursive script, likely a historical document or manuscript. The text is written in a dark ink on aged, yellowish paper. The script is highly stylized and difficult to decipher, but appears to be a continuous flow of characters across approximately 12 lines.

Handwritten text in a cursive script, likely a historical document or manuscript. The text is written in a dark ink on aged, yellowish paper. The script is highly stylized and difficult to decipher, but appears to be a continuous flow of characters across approximately 12 lines.

Handwritten text in cursive script on the left page of an open notebook. The text is written in dark ink on aged, yellowish paper. It consists of approximately 15 lines of continuous, flowing handwriting.

Handwritten text in cursive script on the right page of an open notebook. The text is written in dark ink on aged, yellowish paper. It consists of approximately 15 lines of continuous, flowing handwriting, mirroring the style of the left page.

Handwritten text in a cursive script, likely a historical or literary document. The text is arranged in approximately 15 horizontal lines across the page.

Handwritten text in a cursive script, likely a historical or literary document. The text is arranged in approximately 15 horizontal lines across the page.

Handwritten text in a cursive script, likely a letter or a page from a manuscript. The text is written in dark ink on aged, yellowish paper. The script is dense and flowing, with many loops and flourishes. The lines of text are roughly horizontal but follow the natural curve of the page. The ink is dark, and the paper shows signs of age and wear.

Handwritten text in a cursive script, continuing from the previous page. The text is written in dark ink on aged, yellowish paper. The script is dense and flowing, with many loops and flourishes. The lines of text are roughly horizontal but follow the natural curve of the page. The ink is dark, and the paper shows signs of age and wear.

Handwritten text in a cursive script, likely a personal letter or diary entry. The text is written in a fluid, connected style across approximately 12 lines on the left page.

Handwritten text in a cursive script, continuing from the previous page. The text is written in a fluid, connected style across approximately 12 lines on the right page.

Handwritten text in cursive script, likely a letter or a page from a manuscript. The text is written in a fluid, connected style across approximately 12 lines.

Handwritten text in cursive script, likely a letter or a page from a manuscript. The text is written in a fluid, connected style across approximately 12 lines.

Handwritten text in a cursive script, likely a musical score or a list of notes, spanning the left page of the manuscript.

Handwritten text in a cursive script, likely a musical score or a list of notes, spanning the right page of the manuscript.

Handwritten text in cursive script, likely a list or account, written on the right page of an open manuscript. The text is arranged in approximately 12 horizontal lines, starting from the top right and moving downwards. The ink is dark and the script is highly stylized and fluid.

Handwritten text in cursive script, likely a list or account, written on the left page of an open manuscript. The text is arranged in approximately 12 horizontal lines, starting from the top left and moving downwards. The ink is dark and the script is highly stylized and fluid.

Handwritten text in a cursive script, likely a historical document or manuscript. The text is written in dark ink on aged, yellowish paper. The script is dense and flowing, characteristic of a historical cursive style. The text is arranged in approximately 15 lines across the page. The first line on the left side of the page begins with the word "Handwritten". The text continues across the page, with some lines appearing to be part of a list or a series of entries. The handwriting is consistent throughout, suggesting a single scribe. The paper shows signs of age, including slight discoloration and a few small spots. The overall appearance is that of a well-preserved historical document.

Handwritten text in Arabic script, likely a religious or historical document, written in a cursive style. The text is arranged in approximately 15 horizontal lines across the page.

Handwritten text in Arabic script, continuing from the previous page. The text is arranged in approximately 15 horizontal lines across the page.

Handwritten text in a cursive script, likely a historical document or manuscript, written on the left page of an open book. The text is arranged in approximately 12 horizontal lines, starting from the top left and moving downwards. The ink is dark, and the paper shows signs of age and wear.

Handwritten text in a cursive script, likely a historical document or manuscript, written on the right page of an open book. The text is arranged in approximately 12 horizontal lines, starting from the top left of the page and moving downwards. The ink is dark, and the paper shows signs of age and wear.

Handwritten text in Arabic script, consisting of approximately 14 lines of cursive script.

Handwritten text in Arabic script, consisting of approximately 14 lines of cursive script.

Handwritten text in a cursive script, likely a historical document or manuscript. The text is written in a dark ink on aged, yellowish paper. It consists of approximately 15 lines of text, with some lines starting with a large, decorative initial letter. The script is highly stylized and characteristic of the Ottoman or Persian calligraphic tradition.

Handwritten text in a cursive script, likely a historical document or manuscript. The text is written in a dark ink on aged, yellowish paper. It consists of approximately 15 lines of text, with some lines starting with a large, decorative initial letter. The script is highly stylized and characteristic of the Ottoman or Persian calligraphic tradition.

Handwritten text in cursive script, likely a list or series of entries, spanning the left page of the manuscript.

Handwritten text in cursive script, continuing the list or series of entries from the left page, spanning the right page of the manuscript.

Handwritten text in a cursive script, likely a historical document or manuscript. The text is written in a dark ink on aged, yellowish paper. The script is dense and flowing, characteristic of a historical cursive style. The text is arranged in approximately 15 horizontal lines across the page.

Handwritten text in a cursive script, likely a historical document or manuscript. The text is written in a dark ink on aged, yellowish paper. The script is dense and flowing, characteristic of a historical cursive style. The text is arranged in approximately 15 horizontal lines across the page.

Handwritten text in a cursive script, likely a historical document or manuscript. The text is written in a dark ink on aged, yellowish paper. The script is dense and flowing, with many loops and flourishes. The lines of text are closely spaced and run horizontally across the page. The overall appearance is that of a well-preserved but aged piece of paper with a single column of text.

Handwritten text in a cursive script, likely a historical document or manuscript. The text is written in a dark ink on aged, yellowish paper. The script is dense and flowing, with many loops and flourishes. The lines of text are closely spaced and run horizontally across the page. The overall appearance is that of a well-preserved but aged piece of paper with a single column of text.

بسم الله الرحمن الرحيم
الحمد لله رب العالمين
والصلاة والسلام على
سيدنا محمد وآله الطيبين
الطاهرين
الذين هم خاتم النبيين
مؤتمرون بهم ولو كان
بينهم وبين ربهم
أرضاء
والله اعلم
بما يعلنون

بسم الله الرحمن الرحيم
الحمد لله رب العالمين
والصلاة والسلام على
سيدنا محمد وآله الطيبين
الطاهرين
الذين هم خاتم النبيين
مؤتمرون بهم ولو كان
بينهم وبين ربهم
أرضاء
والله اعلم
بما يعلنون

Handwritten musical notation on the right page, consisting of ten staves of music written in a cursive style.

Handwritten musical notation on the left page, consisting of ten staves of music written in a cursive style.

Handwritten text in cursive script, likely a list or series of entries, spanning the left page of the notebook. The text is written in dark ink on aged, yellowed paper.

Handwritten text in cursive script, continuing from the left page, spanning the right page of the notebook. The text is written in dark ink on aged, yellowed paper.

Handwritten musical notation on the right page, consisting of a single staff with a treble clef and a key signature of one flat. The notation includes various rhythmic values and rests, with some notes beamed together. The ink is dark and the paper shows signs of age.

Handwritten musical notation on the left page, consisting of a single staff with a treble clef and a key signature of one flat. The notation includes various rhythmic values and rests, with some notes beamed together. The ink is dark and the paper shows signs of age.

Handwritten text in cursive script, likely a list or account, consisting of approximately 15 lines of text.

Handwritten text in cursive script, likely a list or account, consisting of approximately 15 lines of text.

— 1 —
— 2 —
— 3 —
— 4 —
— 5 —
— 6 —
— 7 —
— 8 —
— 9 —
— 10 —
— 11 —
— 12 —
— 13 —
— 14 —
— 15 —
— 16 —
— 17 —
— 18 —
— 19 —
— 20 —
— 21 —
— 22 —
— 23 —
— 24 —
— 25 —
— 26 —
— 27 —
— 28 —
— 29 —
— 30 —
— 31 —
— 32 —
— 33 —
— 34 —
— 35 —
— 36 —
— 37 —
— 38 —
— 39 —
— 40 —
— 41 —
— 42 —
— 43 —
— 44 —
— 45 —
— 46 —
— 47 —
— 48 —
— 49 —
— 50 —
— 51 —
— 52 —
— 53 —
— 54 —
— 55 —
— 56 —
— 57 —
— 58 —
— 59 —
— 60 —
— 61 —
— 62 —
— 63 —
— 64 —
— 65 —
— 66 —
— 67 —
— 68 —
— 69 —
— 70 —
— 71 —
— 72 —
— 73 —
— 74 —
— 75 —
— 76 —
— 77 —
— 78 —
— 79 —
— 80 —
— 81 —
— 82 —
— 83 —
— 84 —
— 85 —
— 86 —
— 87 —
— 88 —
— 89 —
— 90 —
— 91 —
— 92 —
— 93 —
— 94 —
— 95 —
— 96 —
— 97 —
— 98 —
— 99 —
— 100 —

— 101 —
— 102 —
— 103 —
— 104 —
— 105 —
— 106 —
— 107 —
— 108 —
— 109 —
— 110 —
— 111 —
— 112 —
— 113 —
— 114 —
— 115 —
— 116 —
— 117 —
— 118 —
— 119 —
— 120 —
— 121 —
— 122 —
— 123 —
— 124 —
— 125 —
— 126 —
— 127 —
— 128 —
— 129 —
— 130 —
— 131 —
— 132 —
— 133 —
— 134 —
— 135 —
— 136 —
— 137 —
— 138 —
— 139 —
— 140 —
— 141 —
— 142 —
— 143 —
— 144 —
— 145 —
— 146 —
— 147 —
— 148 —
— 149 —
— 150 —
— 151 —
— 152 —
— 153 —
— 154 —
— 155 —
— 156 —
— 157 —
— 158 —
— 159 —
— 160 —
— 161 —
— 162 —
— 163 —
— 164 —
— 165 —
— 166 —
— 167 —
— 168 —
— 169 —
— 170 —
— 171 —
— 172 —
— 173 —
— 174 —
— 175 —
— 176 —
— 177 —
— 178 —
— 179 —
— 180 —
— 181 —
— 182 —
— 183 —
— 184 —
— 185 —
— 186 —
— 187 —
— 188 —
— 189 —
— 190 —
— 191 —
— 192 —
— 193 —
— 194 —
— 195 —
— 196 —
— 197 —
— 198 —
— 199 —
— 200 —

Handwritten musical notation on the right page, consisting of ten staves of music written in a cursive style.

Handwritten musical notation on the left page, consisting of ten staves of music written in a cursive style.

Handwritten text in cursive script, likely a list or account, consisting of approximately 15 lines of text.

Handwritten text in cursive script, likely a list or account, consisting of approximately 15 lines of text.

Handwritten text in cursive script, likely a letter or journal entry, covering the right page of the notebook. The text is written in dark ink on aged, yellowish paper. It consists of approximately 15 lines of text, starting with a capital letter that appears to be 'D'. The script is fluid and characteristic of the 18th or 19th century.

Handwritten text in cursive script, likely a letter or journal entry, covering the left page of the notebook. The text is written in dark ink on aged, yellowish paper. It consists of approximately 15 lines of text, starting with a capital letter that appears to be 'D'. The script is fluid and characteristic of the 18th or 19th century.

Handwritten text in a cursive script, likely a historical or religious document. The text is written in a dark ink on aged, yellowish paper. The script is dense and flowing, with many loops and flourishes. The lines are roughly horizontal but show some variation in alignment. The text appears to be a continuous passage, possibly a prayer or a record of events.

Handwritten text in a cursive script, continuing from the previous page. The script is consistent with the first page, showing a high level of fluency and skill. The lines are also roughly horizontal, with some decorative elements. The text is well-preserved and clearly legible, despite the age of the paper.

Handwritten text in a cursive script, likely a historical document or manuscript. The text is written in dark ink on aged, yellowish paper. It consists of approximately 14 lines of text, starting with a large initial letter 'S' on the first line. The script is highly stylized and difficult to decipher without a key.

Handwritten text in a cursive script, likely a historical document or manuscript. The text is written in dark ink on aged, yellowish paper. It consists of approximately 14 lines of text, starting with a large initial letter 'S' on the first line. The script is highly stylized and difficult to decipher without a key.

Handwritten text in cursive script, likely a list or account, written on the left page of an open manuscript. The text is arranged in approximately 15 horizontal lines, starting from the top left and moving downwards. The ink is dark, and the paper shows signs of age and wear.

Handwritten text in cursive script, likely a list or account, written on the right page of an open manuscript. The text is arranged in approximately 15 horizontal lines, starting from the top left of the page and moving downwards. The ink is dark, and the paper shows signs of age and wear.

Handwritten text in a cursive script, likely a historical document or manuscript. The text is written in dark ink on aged, yellowish paper. It consists of approximately 12 lines of text, with some lines starting with a small decorative flourish or initial. The script is highly stylized and difficult to decipher without a key.

Handwritten text in a cursive script, likely a historical document or manuscript. The text is written in dark ink on aged, yellowish paper. It consists of approximately 12 lines of text, with some lines starting with a small decorative flourish or initial. The script is highly stylized and difficult to decipher without a key.

Handwritten text in cursive script, likely a letter or a page from a manuscript. The text is written in a fluid, connected style across approximately 12 lines.

Handwritten text in cursive script, continuing from the previous page. The text is written in a fluid, connected style across approximately 12 lines.

Handwritten text in a cursive script, likely a historical document or manuscript, written on the left page of an open book. The text is arranged in approximately 12 horizontal lines, flowing from right to left across the page.

Handwritten text in a cursive script, likely a historical document or manuscript, written on the right page of an open book. The text is arranged in approximately 12 horizontal lines, flowing from right to left across the page.

Handwritten text in a cursive script, likely a historical document or manuscript, written on the left page of an open book. The text is arranged in approximately 15 horizontal lines, flowing from right to left across the page. The ink is dark, and the paper shows signs of age and wear.

Handwritten text in a cursive script, likely a historical document or manuscript, written on the right page of an open book. The text is arranged in approximately 15 horizontal lines, flowing from right to left across the page. The ink is dark, and the paper shows signs of age and wear.

Handwritten text in a cursive script, likely a historical document or manuscript, written on the right page of an open book. The text is arranged in approximately 15 horizontal lines, flowing from right to left across the page. The ink is dark and the paper shows signs of age.

Handwritten text in a cursive script, likely a historical document or manuscript, written on the left page of an open book. The text is arranged in approximately 15 horizontal lines, flowing from right to left across the page. The ink is dark and the paper shows signs of age.

Handwritten text in cursive script, likely a list or account, spanning the left page of the notebook. The text is written in dark ink on aged paper and includes various entries, some with numbers and some with what appear to be names or descriptions. The script is fluid and characteristic of the 17th or 18th century.

Handwritten text in cursive script, continuing from the left page, spanning the right page of the notebook. The text is written in dark ink on aged paper and includes various entries, some with numbers and some with what appear to be names or descriptions. The script is fluid and characteristic of the 17th or 18th century.

Handwritten text in cursive script, likely a letter or document, written on the left page of an open notebook. The text is arranged in approximately 12 horizontal lines, flowing from right to left across the page.

Handwritten text in cursive script, likely a letter or document, written on the right page of an open notebook. The text is arranged in approximately 12 horizontal lines, flowing from right to left across the page.

Handwritten text in cursive script, likely a letter or journal entry, covering the right page of the open book. The text is written in dark ink on aged, yellowish paper. It consists of approximately 12 lines of text, starting with a small mark that could be a letter or a symbol. The handwriting is fluid and characteristic of the late 18th or early 19th century.

Handwritten text in cursive script, likely a letter or journal entry, covering the left page of the open book. The text is written in dark ink on aged, yellowish paper. It consists of approximately 12 lines of text, continuing from the right page. The handwriting is consistent with the right page, showing a high level of fluency and speed.

— 1 —
— 2 —
— 3 —
— 4 —
— 5 —
— 6 —
— 7 —
— 8 —
— 9 —
— 10 —
— 11 —
— 12 —
— 13 —
— 14 —
— 15 —
— 16 —
— 17 —
— 18 —
— 19 —
— 20 —
— 21 —
— 22 —
— 23 —
— 24 —
— 25 —
— 26 —
— 27 —
— 28 —
— 29 —
— 30 —
— 31 —
— 32 —
— 33 —
— 34 —
— 35 —
— 36 —
— 37 —
— 38 —
— 39 —
— 40 —
— 41 —
— 42 —
— 43 —
— 44 —
— 45 —
— 46 —
— 47 —
— 48 —
— 49 —
— 50 —
— 51 —
— 52 —
— 53 —
— 54 —
— 55 —
— 56 —
— 57 —
— 58 —
— 59 —
— 60 —
— 61 —
— 62 —
— 63 —
— 64 —
— 65 —
— 66 —
— 67 —
— 68 —
— 69 —
— 70 —
— 71 —
— 72 —
— 73 —
— 74 —
— 75 —
— 76 —
— 77 —
— 78 —
— 79 —
— 80 —
— 81 —
— 82 —
— 83 —
— 84 —
— 85 —
— 86 —
— 87 —
— 88 —
— 89 —
— 90 —
— 91 —
— 92 —
— 93 —
— 94 —
— 95 —
— 96 —
— 97 —
— 98 —
— 99 —
— 100 —

— 101 —
— 102 —
— 103 —
— 104 —
— 105 —
— 106 —
— 107 —
— 108 —
— 109 —
— 110 —
— 111 —
— 112 —
— 113 —
— 114 —
— 115 —
— 116 —
— 117 —
— 118 —
— 119 —
— 120 —
— 121 —
— 122 —
— 123 —
— 124 —
— 125 —
— 126 —
— 127 —
— 128 —
— 129 —
— 130 —
— 131 —
— 132 —
— 133 —
— 134 —
— 135 —
— 136 —
— 137 —
— 138 —
— 139 —
— 140 —
— 141 —
— 142 —
— 143 —
— 144 —
— 145 —
— 146 —
— 147 —
— 148 —
— 149 —
— 150 —
— 151 —
— 152 —
— 153 —
— 154 —
— 155 —
— 156 —
— 157 —
— 158 —
— 159 —
— 160 —
— 161 —
— 162 —
— 163 —
— 164 —
— 165 —
— 166 —
— 167 —
— 168 —
— 169 —
— 170 —
— 171 —
— 172 —
— 173 —
— 174 —
— 175 —
— 176 —
— 177 —
— 178 —
— 179 —
— 180 —
— 181 —
— 182 —
— 183 —
— 184 —
— 185 —
— 186 —
— 187 —
— 188 —
— 189 —
— 190 —
— 191 —
— 192 —
— 193 —
— 194 —
— 195 —
— 196 —
— 197 —
— 198 —
— 199 —
— 200 —

Handwritten musical notation on the right page, consisting of ten staves of music written in a cursive style.

Handwritten musical notation on the left page, consisting of ten staves of music written in a cursive style.

Handwritten text in cursive script, likely a list or account, written on the right page of an open manuscript. The text is arranged in approximately 12 horizontal lines, starting from the top right and moving downwards. The ink is dark and the script is highly fluid and connected.

Handwritten text in cursive script, likely a list or account, written on the left page of an open manuscript. The text is arranged in approximately 12 horizontal lines, starting from the top left and moving downwards. The ink is dark and the script is highly fluid and connected.

Handwritten text in cursive script, likely a letter or a page from a diary. The text is written in a fluid, connected style across two pages. The right page contains approximately 12 lines of text, and the left page contains approximately 12 lines of text. The ink is dark, and the paper shows signs of age and wear.

Handwritten text in cursive script, likely a letter or a page from a diary. The text is written in a fluid, connected style across approximately 12 lines.

Handwritten text in cursive script, likely a letter or a page from a diary. The text is written in a fluid, connected style across approximately 12 lines.

わがはしきまのさしだるま
波の子里にまはるる
もみすのこしきま

まはるるまはるるまはるるま

まはるるまはるるまはるるま

まはるるまはるるまはるるま

まはるるまはるるまはるるま

まはるるまはるるまはるるま

まはるるまはるるまはるるま

まはるるまはるるまはるるま

まはるるまはるるまはるるま

まはるるまはるるまはるるま

まはるるまはるるまはるるま

まはるるまはるるまはるるま

まはるるまはるるまはるるま

まはるるまはるるまはるるま

まはるるまはるるまはるるま

まはるるまはるるまはるるま

まはるるまはるるまはるるま

まはるるまはるるまはるるま

まはるるまはるるまはるるま

まはるるまはるるまはるるま

まはるるまはるるまはるるま

まはるるまはるるまはるるま

まはるるまはるるまはるるま

Handwritten text in cursive script, consisting of approximately 10 lines of text.

Handwritten text in cursive script, consisting of approximately 10 lines of text.

Handwritten text in cursive script, consisting of approximately 10 lines of text.

Handwritten text in cursive script, likely a letter or document, written on the right page of an open book. The text is written in a fluid, connected style with some ink bleed-through from the reverse side.

Handwritten text in cursive script, likely a letter or document, written on the left page of an open book. The text is written in a fluid, connected style with some ink bleed-through from the reverse side.

Handwritten text in a cursive script, likely a letter or a personal note, spanning two pages of a notebook. The text is written in dark ink on aged, yellowish paper. The script is highly stylized and fluid, characteristic of a personal shorthand or a specific dialect. The text is arranged in approximately 15 horizontal lines across both pages, with some lines starting with a small mark that could be a paragraph indicator or a specific character. The overall appearance is that of a handwritten document, possibly a diary entry or a letter to a friend.

Handwritten text in cursive script, likely a letter or a page from a manuscript. The text is written in dark ink on aged, yellowish paper. It consists of approximately 12 lines of text, starting with a large initial letter 'L' and ending with a period. The script is highly stylized and characteristic of the 17th or 18th century.

Handwritten text in cursive script, likely a letter or a page from a manuscript. The text is written in dark ink on aged, yellowish paper. It consists of approximately 12 lines of text, starting with a large initial letter 'L' and ending with a period. The script is highly stylized and characteristic of the 17th or 18th century.

Handwritten text in cursive script, likely a letter or document, covering the left page of the open book. The text is written in dark ink on aged, yellowish paper.

Handwritten text in cursive script, likely a letter or document, covering the right page of the open book. The text is written in dark ink on aged, yellowish paper.

Handwritten text in a cursive script, likely a historical document or manuscript. The text is written in a dark ink on aged, yellowish paper. The script is dense and flowing, characteristic of a historical cursive style. The text is arranged in approximately 15 horizontal lines across the page.

Handwritten text in a cursive script, likely a historical document or manuscript. The text is written in a dark ink on aged, yellowish paper. The script is dense and flowing, characteristic of a historical cursive style. The text is arranged in approximately 15 horizontal lines across the page.

Handwritten text in Arabic script, likely a religious or historical document. The text is written in a cursive style and spans approximately 12 lines across the page.

Handwritten text in Arabic script, continuing from the previous page. The text is written in a cursive style and spans approximately 12 lines across the page.

Handwritten text in a cursive script, likely a historical or religious document. The text is written in dark ink on aged, yellowish paper. It consists of approximately 15 lines of text, with some lines starting with a large, decorative initial letter. The script is highly stylized and difficult to decipher without a key.

Handwritten text in a cursive script, continuing from the previous page. The text is written in dark ink on aged, yellowish paper. It consists of approximately 15 lines of text, with some lines starting with a large, decorative initial letter. The script is highly stylized and difficult to decipher without a key.

Handwritten text in cursive script on the right page of an open book. The text is written in a fluid, connected style across approximately 15 lines.

Handwritten text in cursive script on the left page of an open book. The text is written in a fluid, connected style across approximately 15 lines.

Handwritten text in cursive script, likely a list or account, written on the left page of an open notebook. The text is arranged in approximately 12 horizontal lines, starting from the top right and moving downwards. The ink is dark and the paper is aged and yellowed.

Handwritten text in cursive script, likely a list or account, written on the right page of an open notebook. The text is arranged in approximately 12 horizontal lines, starting from the top right and moving downwards. The ink is dark and the paper is aged and yellowed.

Handwritten text in cursive script, likely a letter or document, written on the left page of an open manuscript. The text is written in a fluid, connected style with various flourishes and ascenders. The ink is dark on a light-colored paper.

Handwritten text in cursive script, likely a letter or document, written on the right page of an open manuscript. The text continues from the left page, maintaining the same fluid, connected style. The ink is dark on a light-colored paper.

Handwritten text in cursive script on the left page of an open notebook. The text is written in dark ink on aged, yellowish paper. It consists of approximately 12 lines of text, starting with a capital letter that appears to be 'P'. The script is fluid and characteristic of the late 18th or early 19th century.

Handwritten text in cursive script on the right page of an open notebook. The text is written in dark ink on aged, yellowish paper. It consists of approximately 12 lines of text, starting with a capital letter that appears to be 'P'. The script is fluid and characteristic of the late 18th or early 19th century.

Handwritten text in a cursive script, likely a historical document or manuscript, spanning two pages. The text is written in dark ink on aged, yellowish paper. The script is highly stylized and difficult to decipher, but appears to be a form of early modern European cursive. The text is arranged in approximately 15 lines across both pages, with some lines starting with a large initial letter. The handwriting is consistent throughout, suggesting a single scribe.

Handwritten text in a cursive script, likely a historical document or manuscript. The text is written in a dark ink on aged, yellowish paper. It consists of approximately 14 lines of text, starting with a large initial letter 'S'.

Handwritten text in a cursive script, likely a historical document or manuscript. The text is written in a dark ink on aged, yellowish paper. It consists of approximately 14 lines of text, starting with a large initial letter 'S'.

Handwritten text in Arabic script, consisting of approximately 14 lines. The ink is dark and the script is cursive. The text is written on aged, yellowish paper.

Handwritten text in Arabic script, consisting of approximately 14 lines. The ink is dark and the script is cursive. The text is written on aged, yellowish paper.

— ۱۲۳۴

۱۲۳۴۵۶۷۸۹۱۰۱۱۲۱۳۱۴۱۵۱۶۱۷۱۸۱۹۲۰

۲۱۲۲۲۳۲۴۲۵۲۶۲۷۲۸۲۹۳۰۳۱۳۲۳۳۳۴۳۵۳۶۳۷۳۸۳۹۴۰

۴۱۴۲۴۳۴۴۴۵۴۶۴۷۴۸۴۹۵۰۵۱۵۲۵۳۵۴۵۵۵۶۵۷۵۸۵۹۶۰

۶۱۶۲۶۳۶۴۶۵۶۶۶۷۶۸۶۹۷۰۷۱۷۲۷۳۷۴۷۵۷۶۷۷۷۸۷۹۸۰

۸۱۸۲۸۳۸۴۸۵۸۶۸۷۸۸۸۹۹۰۹۱۹۲۹۳۹۴۹۵۹۶۹۷۹۸۹۹۱۰۰

۱۰۱۱۰۲۱۰۳۱۰۴۱۰۵۱۰۶۱۰۷۱۰۸۱۰۹۱۱۰۱۱۱۱۲۱۱۳۱۱۴۱۱۵۱۱۶۱۱۷۱۱۸۱۱۹۱۲۰

۱۲۱۲۱۳۱۲۴۱۲۵۱۲۶۱۲۷۱۲۸۱۲۹۱۳۰۱۳۱۳۲۱۳۳۱۳۴۱۳۵۱۳۶۱۳۷۱۳۸۱۳۹۱۴۰

۱۴۱۴۱۵۱۴۱۶۱۴۱۷۱۴۱۸۱۴۱۹۱۴۲۰۱۴۲۱۴۲۲۱۴۲۳۱۴۲۴۱۴۲۵۱۴۲۶۱۴۲۷۱۴۲۸۱۴۲۹۱۴۳۰

۱۴۳۱۴۳۲۱۴۳۳۱۴۳۴۱۴۳۵۱۴۳۶۱۴۳۷۱۴۳۸۱۴۳۹۱۴۴۰۱۴۴۱۴۴۲۱۴۴۳۱۴۴۴۱۴۴۵۱۴۴۶۱۴۴۷۱۴۴۸۱۴۴۹۱۴۵۰

۱۴۵۱۴۵۲۱۴۵۳۱۴۵۴۱۴۵۵۱۴۵۶۱۴۵۷۱۴۵۸۱۴۵۹۱۴۶۰۱۴۶۱۴۶۲۱۴۶۳۱۴۶۴۱۴۶۵۱۴۶۶۱۴۶۷۱۴۶۸۱۴۶۹۱۴۷۰

۱۴۷۱۴۷۲۱۴۷۳۱۴۷۴۱۴۷۵۱۴۷۶۱۴۷۷۱۴۷۸۱۴۷۹۱۴۸۰۱۴۸۱۴۸۲۱۴۸۳۱۴۸۴۱۴۸۵۱۴۸۶۱۴۸۷۱۴۸۸۱۴۸۹۱۴۹۰

۱۴۹۱۴۹۲۱۴۹۳۱۴۹۴۱۴۹۵۱۴۹۶۱۴۹۷۱۴۹۸۱۴۹۹۱۵۰۰

۱۵۰۱۵۰۲۱۵۰۳۱۵۰۴۱۵۰۵۱۵۰۶۱۵۰۷۱۵۰۸۱۵۰۹۱۵۱۰۱۵۱۱۱۵۱۲۱۵۱۳۱۵۱۴۱۵۱۵۱۵۱۶۱۵۱۷۱۵۱۸۱۵۱۹۱۵۲۰

۱۵۲۱۵۲۲۱۵۲۳۱۵۲۴۱۵۲۵۱۵۲۶۱۵۲۷۱۵۲۸۱۵۲۹۱۵۳۰۱۵۳۱۵۳۲۱۵۳۳۱۵۳۴۱۵۳۵۱۵۳۶۱۵۳۷۱۵۳۸۱۵۳۹۱۵۴۰

۱۵۴۱۵۴۲۱۵۴۳۱۵۴۴۱۵۴۵۱۵۴۶۱۵۴۷۱۵۴۸۱۵۴۹۱۵۵۰۱۵۵۱۵۵۲۱۵۵۳۱۵۵۴۱۵۵۵۱۵۵۶۱۵۵۷۱۵۵۸۱۵۵۹۱۵۶۰

۱۵۶۱۵۶۲۱۵۶۳۱۵۶۴۱۵۶۵۱۵۶۶۱۵۶۷۱۵۶۸۱۵۶۹۱۵۷۰۱۵۷۱۵۷۲۱۵۷۳۱۵۷۴۱۵۷۵۱۵۷۶۱۵۷۷۱۵۷۸۱۵۷۹۱۵۸۰

۱۵۸۱۵۸۲۱۵۸۳۱۵۸۴۱۵۸۵۱۵۸۶۱۵۸۷۱۵۸۸۱۵۸۹۱۵۹۰

۱۵۹۱۵۹۲۱۵۹۳۱۵۹۴۱۵۹۵۱۵۹۶۱۵۹۷۱۵۹۸۱۵۹۹۱۶۰۰

۱۶۰۱۶۰۲۱۶۰۳۱۶۰۴۱۶۰۵۱۶۰۶۱۶۰۷۱۶۰۸۱۶۰۹۱۶۱۰۱۶۱۱۱۶۱۲۱۶۱۳۱۶۱۴۱۶۱۵۱۶۱۶۱۶۱۷۱۶۱۸۱۶۱۹۱۶۲۰

۱۶۳۱۶۳۲۱۶۳۳۱۶۳۴۱۶۳۵۱۶۳۶۱۶۳۷۱۶۳۸۱۶۳۹۱۶۴۰۱۶۴۱۶۴۲۱۶۴۳۱۶۴۴۱۶۴۵۱۶۴۶۱۶۴۷۱۶۴۸۱۶۴۹۱۶۵۰

۱۶۶۱۶۶۲۱۶۶۳۱۶۶۴۱۶۶۵۱۶۶۶۱۶۶۷۱۶۶۸۱۶۶۹۱۶۷۰۱۶۷۱۶۷۲۱۶۷۳۱۶۷۴۱۶۷۵۱۶۷۶۱۶۷۷۱۶۷۸۱۶۷۹۱۶۸۰

۱۶۹۱۶۹۲۱۶۹۳۱۶۹۴۱۶۹۵۱۶۹۶۱۶۹۷۱۶۹۸۱۶۹۹۱۷۰۰

۱۷۰۱۷۰۲۱۷۰۳۱۷۰۴۱۷۰۵۱۷۰۶۱۷۰۷۱۷۰۸۱۷۰۹۱۷۱۰۱۷۱۱۱۷۱۲۱۷۱۳۱۷۱۴۱۷۱۵۱۷۱۶۱۷۱۷۱۷۱۸۱۷۱۹۱۷۲۰

Handwritten text in cursive script, likely a list or account, written on the left page of an open book. The text is arranged in approximately 12 horizontal lines, starting from the top left and moving downwards. The ink is dark, and the paper shows signs of age and wear.

Handwritten text in cursive script, likely a list or account, written on the right page of an open book. The text is arranged in approximately 12 horizontal lines, starting from the top left of the page and moving downwards. The ink is dark, and the paper shows signs of age and wear.

Handwritten text in cursive script, consisting of approximately 10 lines of text.

Handwritten text in cursive script, consisting of approximately 10 lines of text.

Handwritten text in cursive script, consisting of approximately 15 lines of text.

Handwritten text in Arabic script, likely a religious or historical document. The text is written in a cursive style and spans approximately 12 lines across the page.

Handwritten text in Arabic script, continuing from the previous page. The text is written in a cursive style and spans approximately 12 lines across the page.

Handwritten text in cursive script, likely a letter or document, written on the left page of an open book. The text is written in a fluid, connected style with some ink bleed-through from the reverse side.

Handwritten text in cursive script, likely a letter or document, written on the right page of an open book. The text is written in a fluid, connected style with some ink bleed-through from the reverse side.

Handwritten text in cursive script, likely a list or account, written on the left page of an open manuscript. The text is arranged in approximately 12 horizontal lines, starting from the top left and moving downwards. The script is dense and characteristic of early modern European handwriting.

Handwritten text in cursive script, likely a list or account, written on the right page of an open manuscript. The text is arranged in approximately 12 horizontal lines, starting from the top left of the page and moving downwards. The script is dense and characteristic of early modern European handwriting.

Handwritten text in cursive script on the left page of an open notebook. The text is written in dark ink on aged, yellowish paper. It consists of approximately 12 lines of text, starting with a large initial letter 'G' and ending with a period. The script is fluid and characteristic of the 18th or 19th century.

Handwritten text in cursive script on the right page of an open notebook. The text is written in dark ink on aged, yellowish paper. It consists of approximately 12 lines of text, starting with a large initial letter 'G' and ending with a period. The script is fluid and characteristic of the 18th or 19th century.

Handwritten text in cursive script, likely a list or account, written on the left page of an open manuscript. The text is arranged in approximately 12 horizontal lines, starting from the top left and moving downwards. The script is dense and fluid, characteristic of historical cursive handwriting.

Handwritten text in cursive script, likely a list or account, written on the right page of an open manuscript. The text is arranged in approximately 12 horizontal lines, starting from the top left of the page and moving downwards. The script is dense and fluid, characteristic of historical cursive handwriting.

Handwritten cursive text, likely a signature or name.

Handwritten cursive text, possibly a date or location.

Handwritten cursive text, possibly a name or title.

Handwritten cursive text, possibly a name or title.

Handwritten cursive text, possibly a name or title.

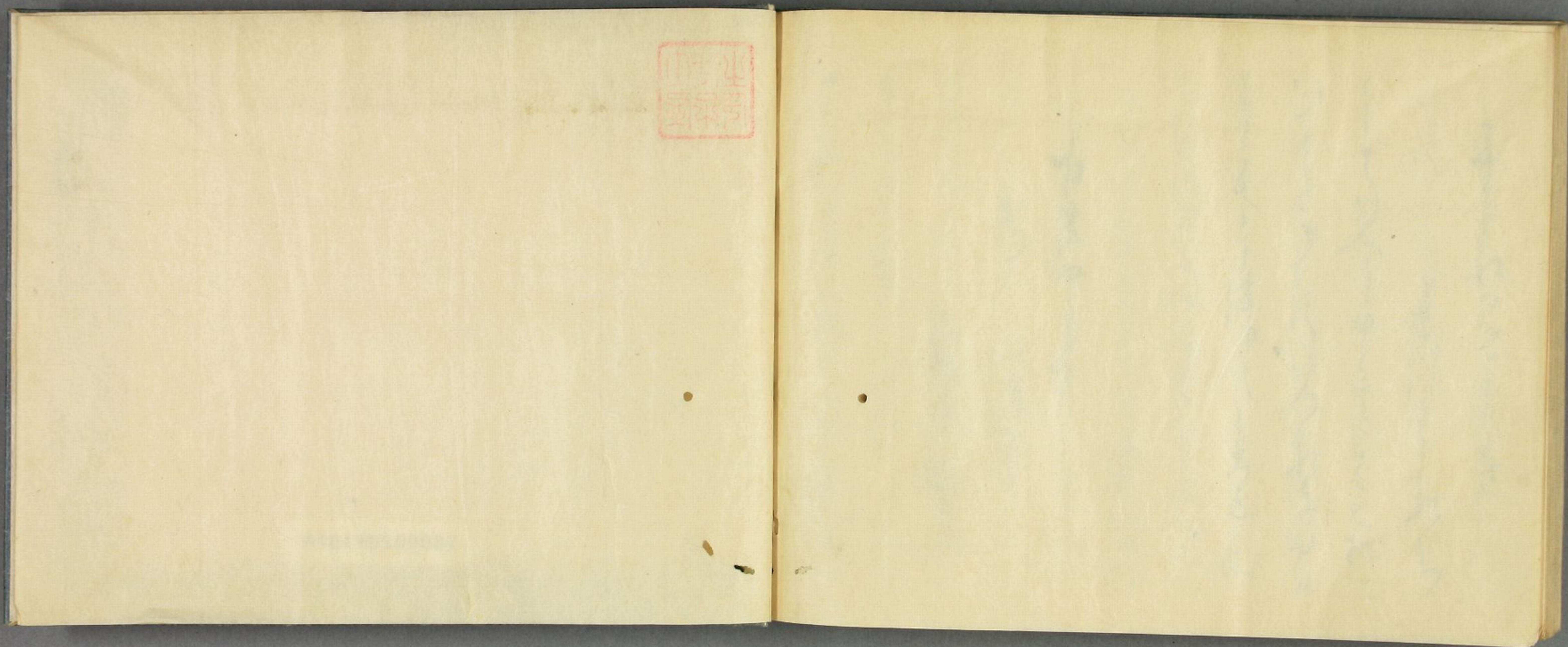
Handwritten cursive text, possibly a name or title.

Handwritten cursive text, possibly a name or title.

Handwritten cursive text, possibly a name or title.

Handwritten cursive text, possibly a name or title.

Handwritten cursive text, possibly a name or title.



010190509082



