

寶曆二年五月廿一日
 此母
 有友
 友



西垣文庫
 文庫10
 6833



Handwritten text at the top of the right page, possibly a title or address.

Official seal and text block on the right page, containing a circular emblem and vertical characters.

Large rectangular seal or stamp on the right page, containing multiple lines of faint, illegible text.

和 (Wa) - Character for 'Japan' or 'Harmony'.

Handwritten text on the left page, including characters like 二月 (February) and 於 (at).

Handwritten text on the left page, including characters like 二月 (February) and 五 (five).

Handwritten text on the left page, possibly a signature or name.

Handwritten vertical text in cursive script, possibly a signature or name, with a horizontal line above it.



Handwritten characters, possibly a signature or name, written vertically.

A series of handwritten characters in cursive script, arranged in a slightly curved line across the page.

後 (After)

後

中

一

臨

一

一

一

一

一

七

桂

五

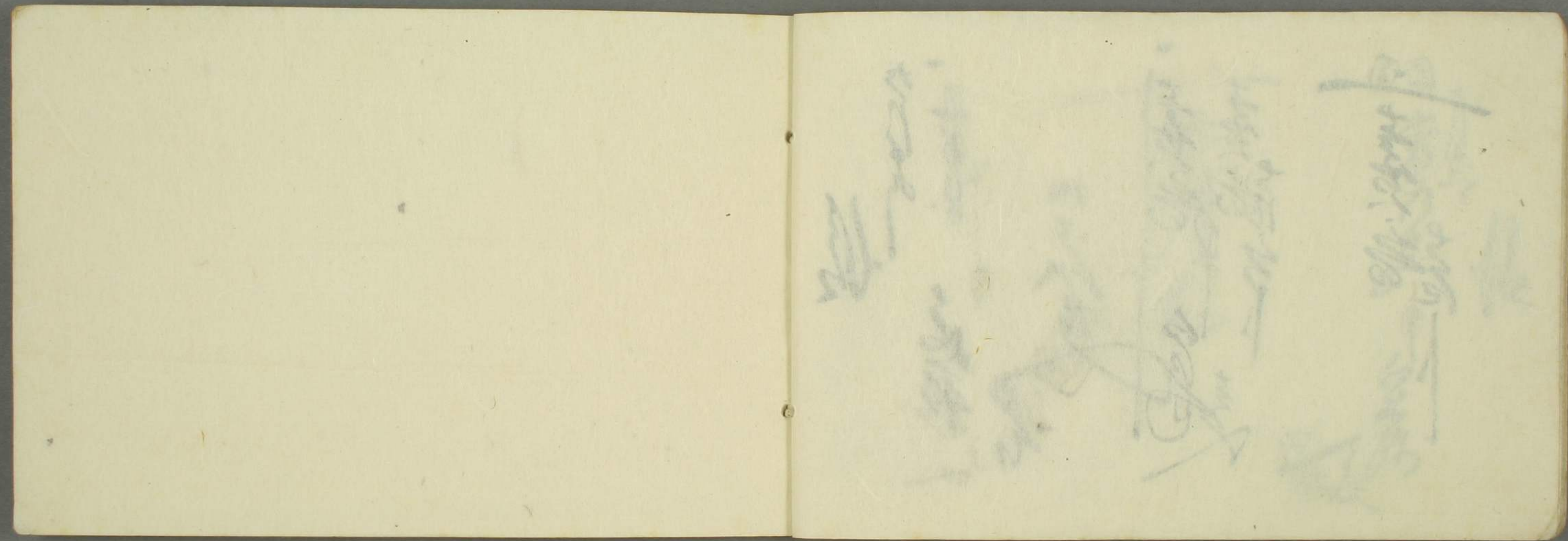
一

改

一

長

一



[Faint, illegible handwriting, likely bleed-through from the reverse side of the page]

以下全て
白紙



氣屋
庄森探

山
東
堂
印

早稲田大学図書館
011688990655