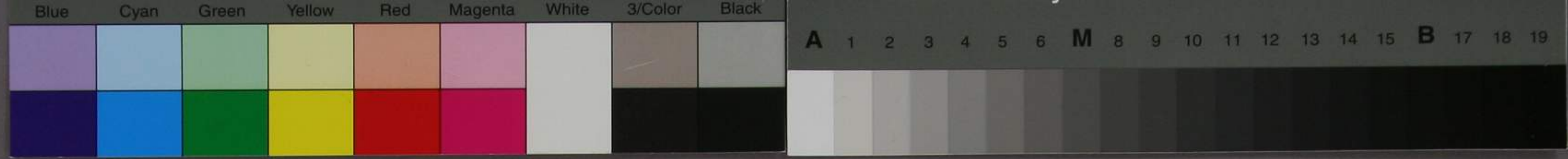


Handwritten Japanese text in cursive style (sōsho) on a light-colored paper strip. The text is arranged in approximately 10 horizontal lines, reading from right to left. The characters are fluid and connected. A red square seal is stamped on the left side of the strip, near the bottom edge. Below the seal is a small white label with the text '洋学文庫 文庫8 J121 8'.







二白  
 林  
 伊  
 学  
 市  
 了

