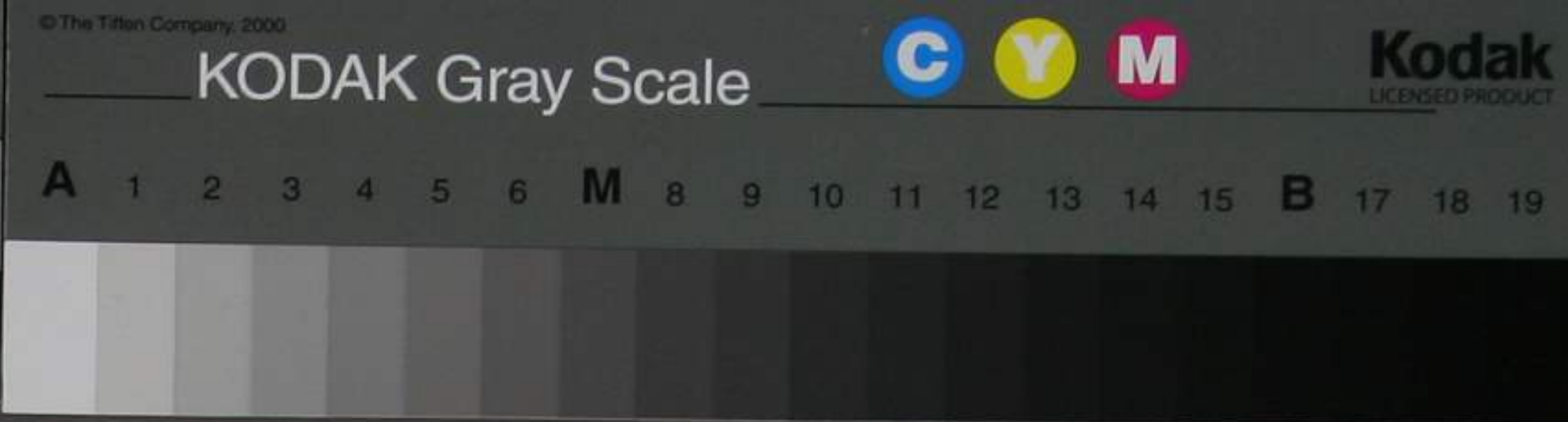


Handwritten text in a cursive script, likely Japanese. The text is arranged in several lines, with some characters circled. The paper is aged and yellowed.





与乃

浮於江流在彼
 昔之福人種
 多之書玉珠
 王阿一之
 新江由斜
 子
 子中苦隨造化
 鄉山
 二有
 子
 唐小
 中
 白
 之
 乃

