

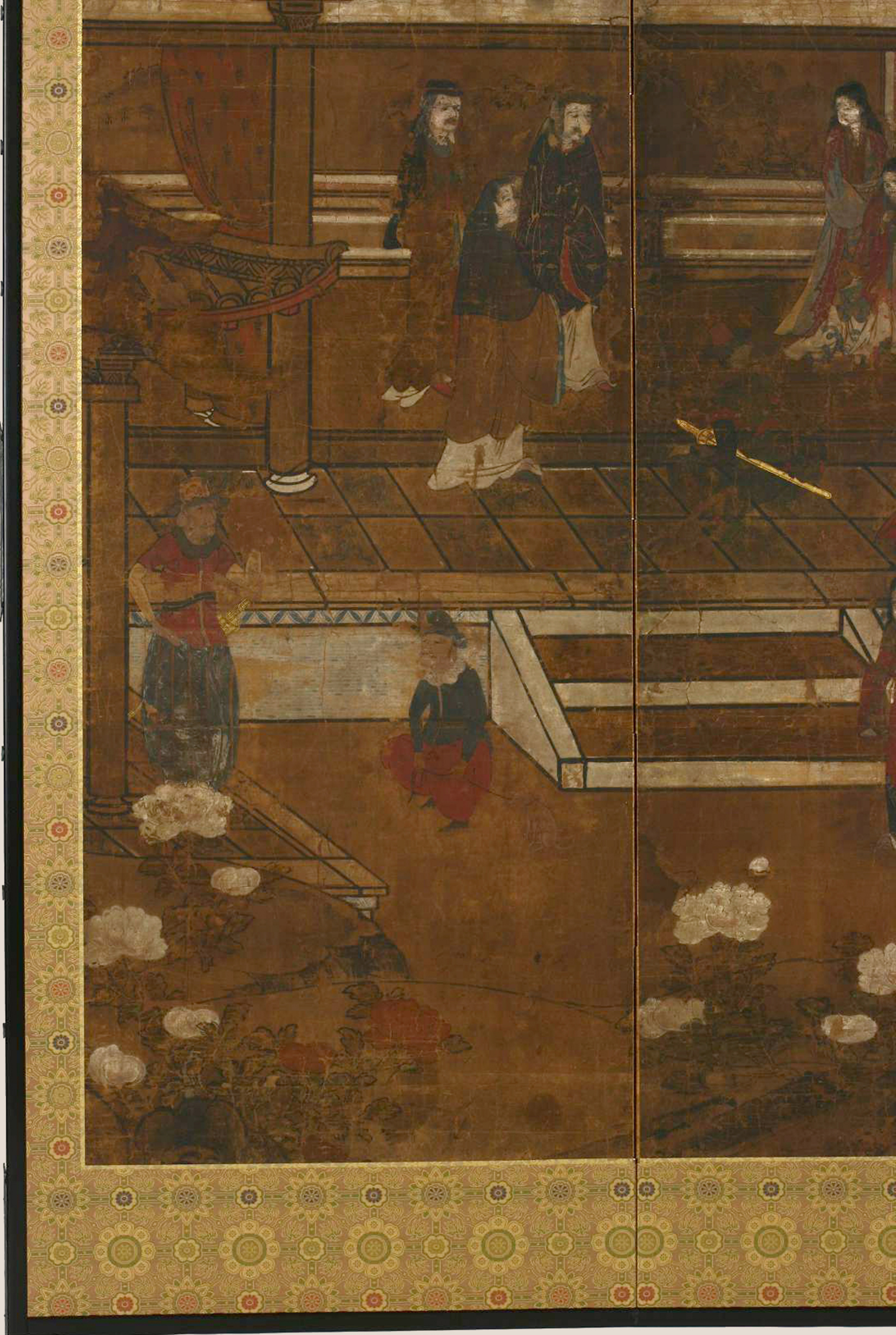
0 10 20 30 40 50 60 70 80 90 100 110 120 130 140 150 160 170 180 190 200 210 220 230 240 250 260 270 280 290 300 310 320 330 340 350 360 370 380 390 400 410 420 430 440 450 460 470 480 490 500 510 520 530 540 550 560 570 580 590 600 610 620 630 640 650 660 670 680 690 700 710 720 730 740 750 760 770 780 790 800 810 820 830 840 850 860 870 880 890 900 910 920 930 940 950 960 970 980 990 1000



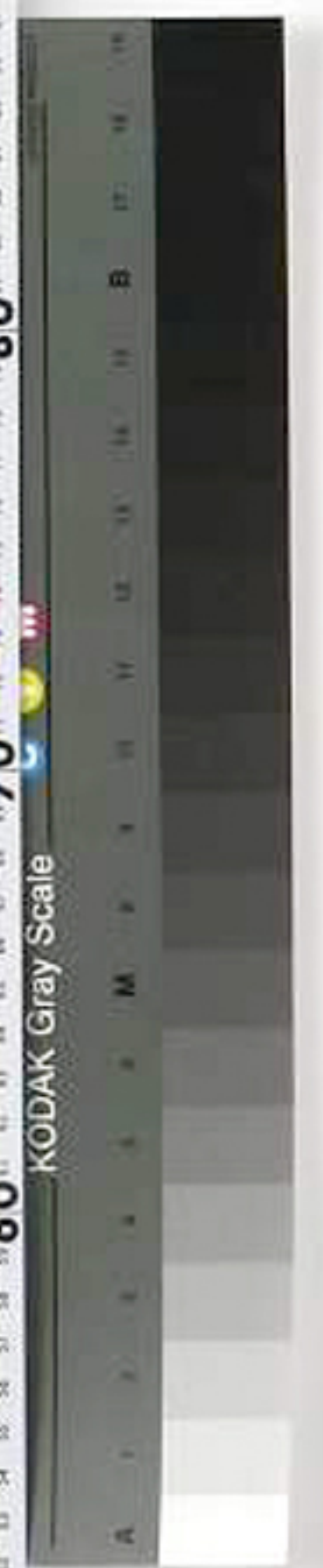








20 30 40 50 60 70 80 90 100 110 120 130 140 150 160 170 180 190 200 210 220 230 240 250 260 270 280 290 300 310 320 330 340 350 360 370 380 390 400 410 420 430 440 450 460 470 480 490 500



Handwritten Japanese text in a cursive style (sōsho) on a grid of paper. The text is arranged in approximately 10 columns and 15 rows. The characters are dark ink on aged, yellowish paper. The writing is dense and fills most of the grid cells. Some characters are larger and more prominent than others, possibly indicating specific words or names. The overall appearance is that of a historical document or a collection of calligraphic samples.

Handwritten Japanese text in a grid format, likely a calligraphy practice sheet or a collection of short pieces. The text is written in various styles, including cursive (sōsho) and semi-cursive (shōsho). Each cell contains a few characters, often accompanied by a circular seal (hanko) or a square seal. The paper is aged and yellowed.

Handwritten text in a cursive script, likely a historical document or manuscript, organized into a grid of approximately 10 columns and 10 rows. The text is written in black ink on aged, yellowish paper. The script is highly stylized and difficult to decipher. Numerous circular and square seals or stamps are visible throughout the document, interspersed with the handwritten characters. The overall appearance is that of an ancient or early modern manuscript.



20 30 40 50 60 70 80 90 100 110 120 130 140 150 160 170 180 190 200 210 220 230 240 250 260 270 280 290 300 310 320 330 340 350 360 370 380 390 400 410 420 430 440 450 460 470 480 490 500

Handwritten text in a grid format on aged paper, likely a ledger or account book. The text is written in a cursive script, possibly Japanese or Chinese, and is organized into columns and rows. The paper shows signs of wear, including stains and discoloration. The text is arranged in a grid with approximately 10 columns and 15 rows. The characters are densely packed and difficult to read due to the cursive style and fading. Some characters appear to be numbers or specific terms, but they are not clearly legible. The overall appearance is that of an old, well-used document.

Handwritten Japanese text in a dense grid format, likely a manuscript or ledger. The text is written in a cursive style (sōsho) and includes various characters, some of which are circled or boxed. The document is organized into columns and rows, with some sections appearing more densely packed than others. The paper is aged and yellowed.

20 30 40 50 60 70 80 90 100 110 120 130 140 150 160 170 180 190 200 210 220 230 240 250 260 270 280 290 300 310 320 330 340 350 360 370 380 390 400 410 420 430 440 450 460 470 480 490 500 510 520 530 540 550 560 570 580 590 600 610 620 630 640 650 660 670 680 690 700 710 720 730 740 750 760 770 780 790 800 810 820 830 840 850 860 870 880 890 900 910 920 930 940 950 960 970 980 990 1000



Handwritten text in cursive style, arranged in approximately 10 columns. The characters are fluid and connected, typical of the 'sōsho' style. Some characters are circled or have small annotations next to them.

A central section of the document, possibly a list or a specific record. It features several columns of text with circular stamps or seals interspersed. The text is more organized than the surrounding sections, with some characters appearing to be in a different script or dialect.

The bottom section of the document, continuing the handwritten text. It shows a continuation of the cursive style with various characters and some circular stamps. The overall appearance is that of a long, continuous record or document.

Fragment of a document with dense handwritten text in a cursive script, likely from a historical manuscript.

Fragment of a document with dense handwritten text in a cursive script, likely from a historical manuscript.

Fragment of a document with dense handwritten text in a cursive script, likely from a historical manuscript.

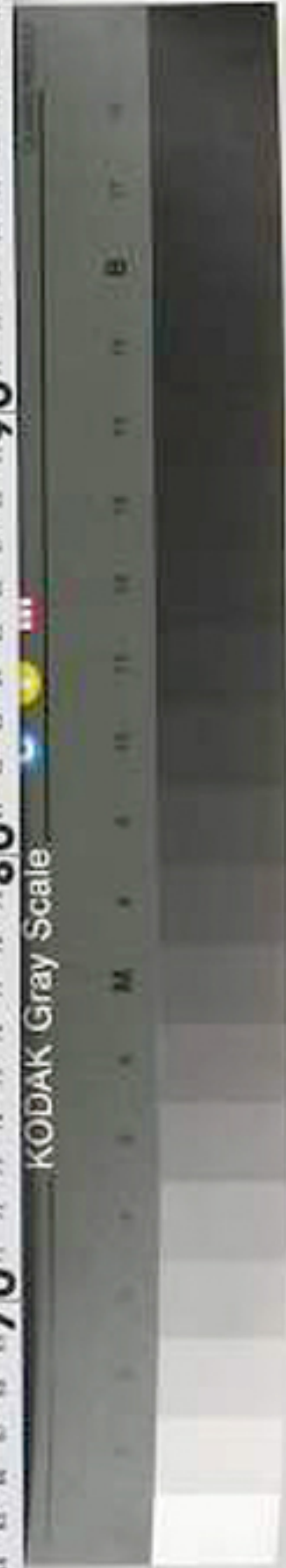
Fragment of a document with dense handwritten text in a cursive script, likely from a historical manuscript.

Fragment of a document with dense handwritten text in a cursive script, likely from a historical manuscript.

Fragment of a document with dense handwritten text in a cursive script, likely from a historical manuscript.

Fragment of a document with dense handwritten text in a cursive script, likely from a historical manuscript.

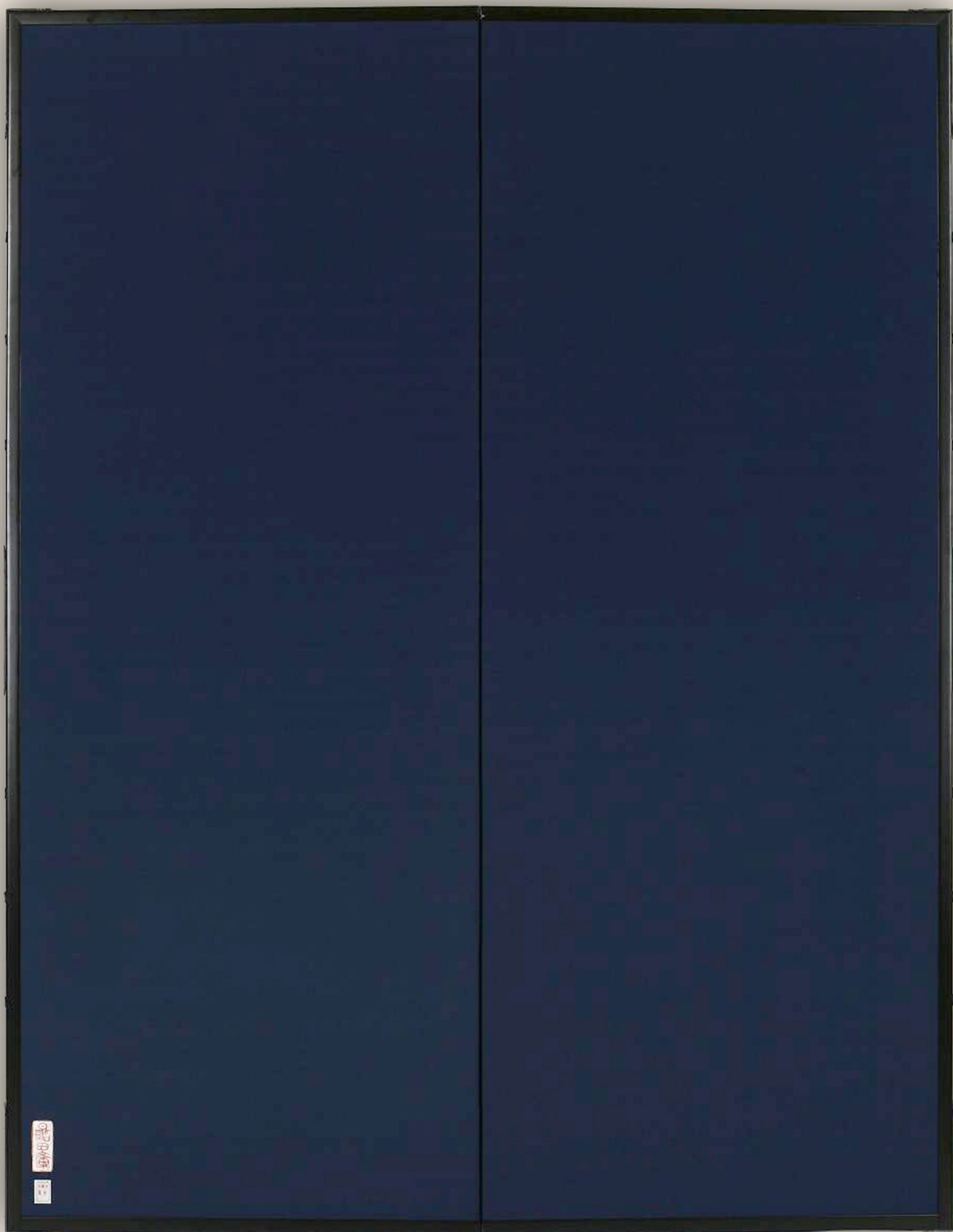
Fragment of a document with dense handwritten text in a cursive script, likely from a historical manuscript.



Handwritten text in a cursive script, likely a historical document or manuscript. The text is arranged in approximately 10 columns and 15 rows. The script is dense and difficult to decipher, but some words and symbols are visible. The document shows signs of age, including discoloration and some dark smudges or ink bleed-through in the center. The text appears to be a list or a series of entries, possibly related to a collection or inventory.

Handwritten text in a cursive script, likely a historical document or manuscript. The text is written on aged, yellowed paper and is organized into several columns. The script is dense and difficult to decipher, but appears to be a form of shorthand or a specific dialect. There are several circular stamps or seals interspersed throughout the text, some of which are partially obscured by ink or damage. The overall appearance is that of an old, well-used document.

Handwritten text in a cursive script, likely a historical document or manuscript. The text is arranged in multiple columns and rows, with some sections appearing to be organized into a grid or table. The script is dense and difficult to decipher, but includes various characters and symbols, possibly representing a specific dialect or a form of shorthand. There are several circular stamps or seals interspersed throughout the text, which may indicate official authentication or ownership. The paper is aged and shows signs of wear, including discoloration and some staining.



100

10