

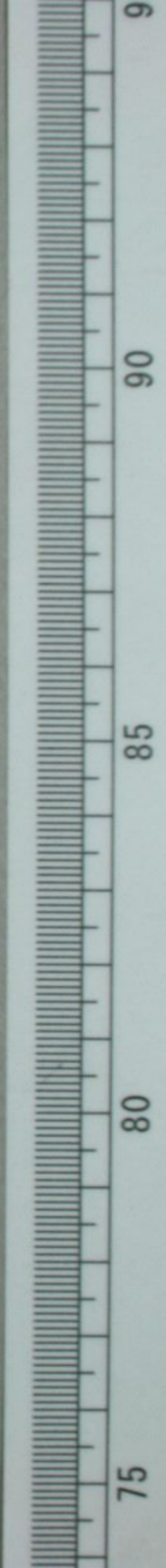


七變人笑余真竹

文能十四
七
山
壽
信

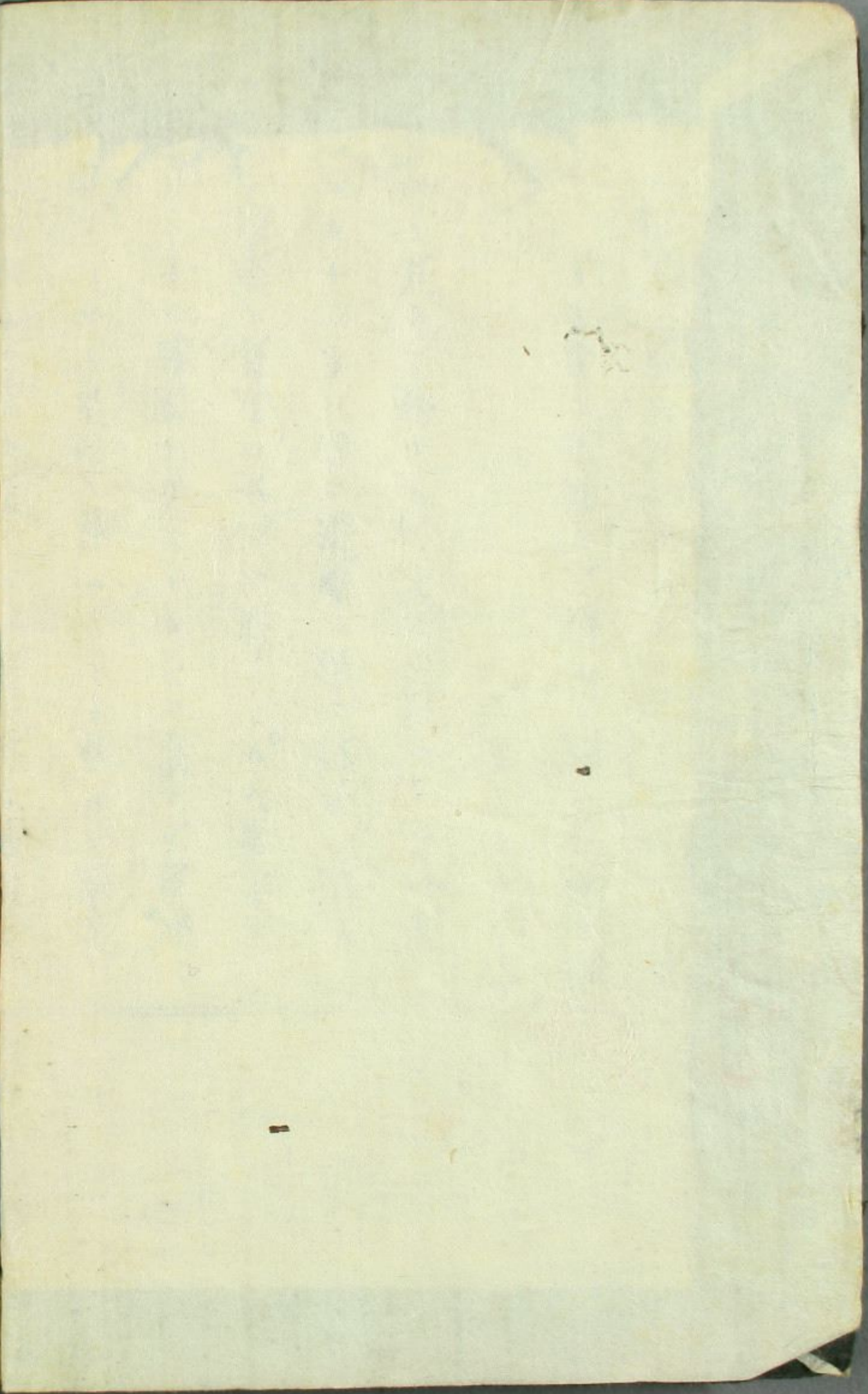
~~D~~
1069

逍遙文庫
文庫 6
987



七
卷
八
人

河
源
流





文庫6
987

ルヲ聽キ。又、那ノ人無キ。寒^カ琳^{リン}ノ中ニハ。憐^レムベキ老狗ノ飢^イエテ、顧^カ眄^ミシ居ルヲ看ルノミナリキ。此時叔父ハ病家ヨリ歸宅シテ、前夜看護ノ為ノニ我家ニ宿シタル孟^{モウ}撒^サト共ニ。頗ル愉快ノ顔色ニテ。火酒ヲ傾ケ居タリ。

〔董孟撒ヨ〕然ラバ昨夜ハ安全ニ過ギシヤ。

〔孟〕然リ。甚ダ安全ニ過ギタリ。婦人ハ病床ニ眠リ。余ハ其傍ラニ卧シ。犬ハ帳外ニ睡リテ。最モ平穩ニ一夜ヲ明カシタリ。而シテ今朝起出テ看レバ。恰カモ粉屋ノ神ガ粉

十二。反^テ從^リ孟中^ニ寫^シ來^ル。



七賢有真為人克老轉壯周か意味を待て名利

を謝寂を愛し塵寰の喧を避て常の竹林の遊を

夫の平日書の七賢人は近所の七變人阮成か似て秋風

客在ハ阮藉か似て醉放左山濤めきる任使あれハ魯康めきる

のそれいそ老予とのバ養子のとら心得壯子とのハ齒波と累

無学文育木訥者夫ハ貪婪各畜家優長性急肝癖言

鈍癖漢漢標輕人千万差別の人の形勢其中僅を足ふ言

州童の御一笑御悦目小梅あり而已

文化十三丙子春三月稿成同

文化十四丁丑正月新繪草紙

三才梨ヶ屋守居

陽齋南山誌



富澤町河内屋原七郎



徳康

晋七賢

遊竹林圖

花と世を竹よ
とやるる存多

撫花

竹の底を

おやまや
五月雨

其角

王我

山久

秀向



春の氣

竹の奥

馬口

松箱

茂盛

多角

劉伶

由秋

劇場七
藝人

土の多々

古舞をよめる

竹をよめる

巴山

茂木の本

中か久由

桐の空



茂木の本

林折

大石

寒葉や
何とあり

若社



葉の

志下

十出

喜の

雄飛

顯藤屋伊左衛門
豪客耽情妓一具
遂坎壞不知沈病
久如恨愛丹心

雄飛

あはれい
定良



題 三日月夜仙
 儂 曼為情序仮成
 夜 渡痕勿值秋風
 客 意氣示副腸
 豫章



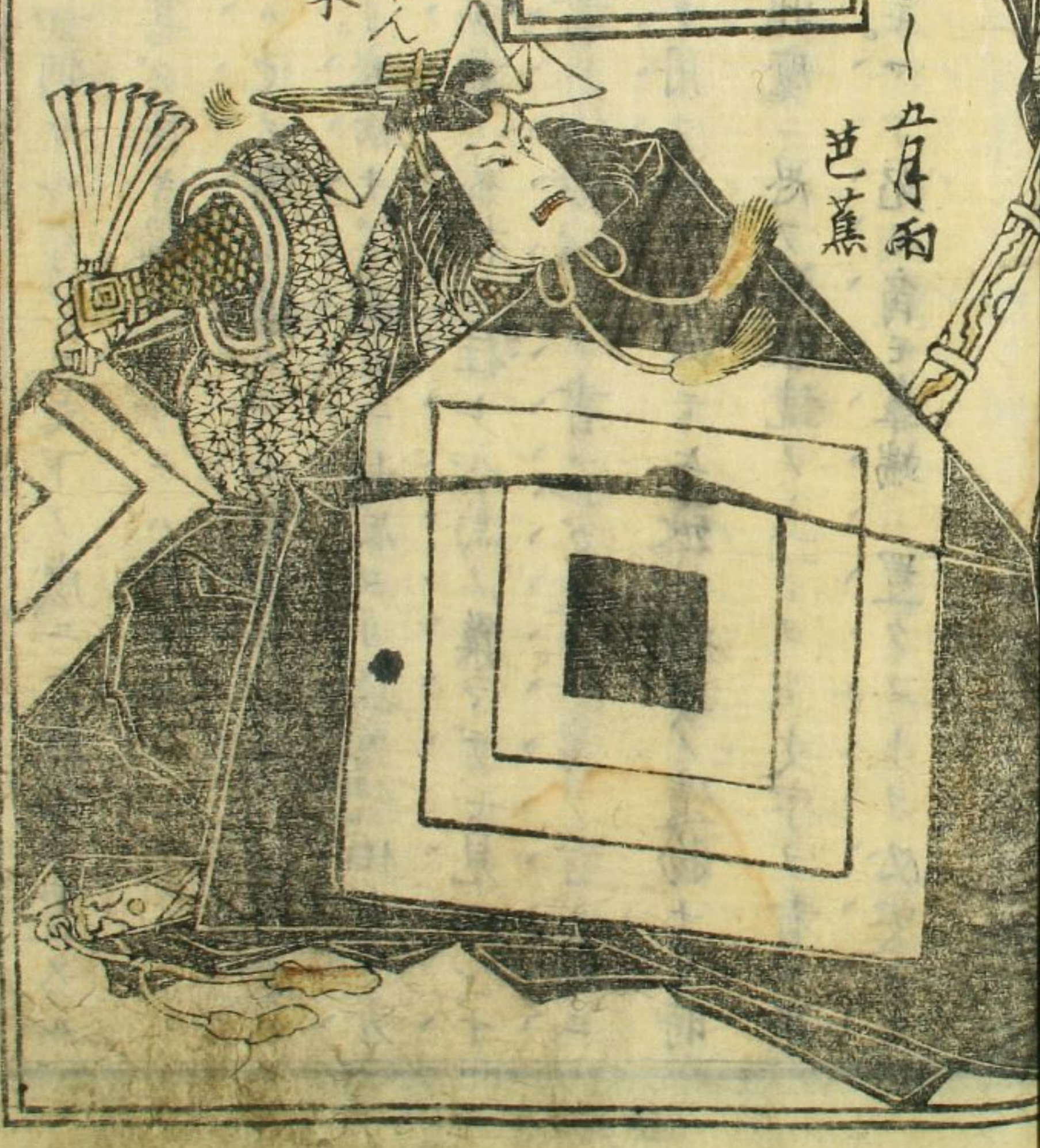
三日月夜凍了了
 七端居り
 溪石

髪とえり
 客新
 昔一五月雨
 芭蕉

題 仁木禪正
 賊 臣主家乱悍愚
 飽 深重時至及頭
 露 夫夫不動胸
 南山

元日や家小
 ありの太刀帯人
 玄来

右は二つうふりきあふんま
 七けの人のあんからいあふん
 うりのうりやいあふんま
 作はあうむんねいあふんま
 牛のうはふんまあふんま
 一ふんまあふんまあふんま
 ふんまあふんまあふんま





七人

十



七人

九

巻の四

Handwritten text in the top left section of the left page, consisting of several lines of cursive script.

Handwritten text in the bottom left section of the left page, continuing the cursive script.

春信画

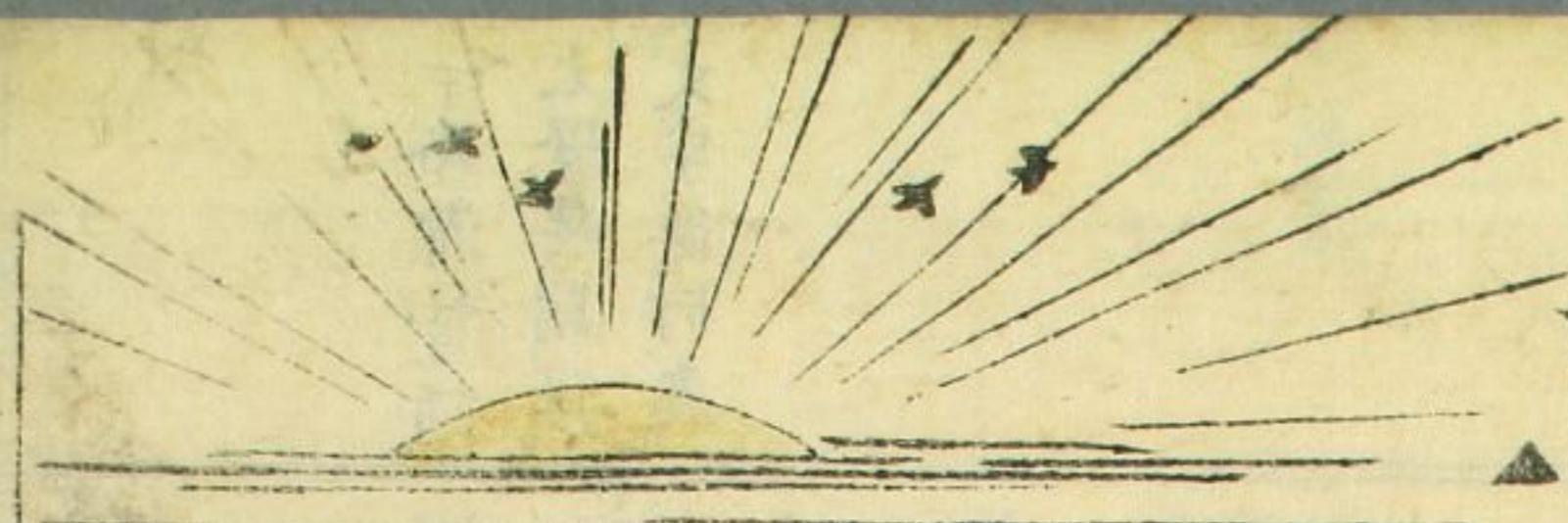
南山人作

Handwritten text in the top right section of the right page, above the illustration.



Handwritten text in the middle right section of the right page, below the top text and above the illustration.

Handwritten text in the bottom right section of the right page, below the illustration.



Handwritten text in the upper left section of the left page.

Handwritten text in the lower left section of the left page.



Handwritten text to the right of the man's head.

Handwritten text to the right of the man's feet.

Large block of handwritten text at the top of the right page.

Large block of handwritten text at the bottom of the right page.



Small handwritten text at the bottom of the right page, below the woman's feet.

Handwritten text in the top left corner of the left page, including the characters "Sente" and "Sente".



Handwritten text in the bottom left corner of the left page, including the characters "Sente" and "Sente".

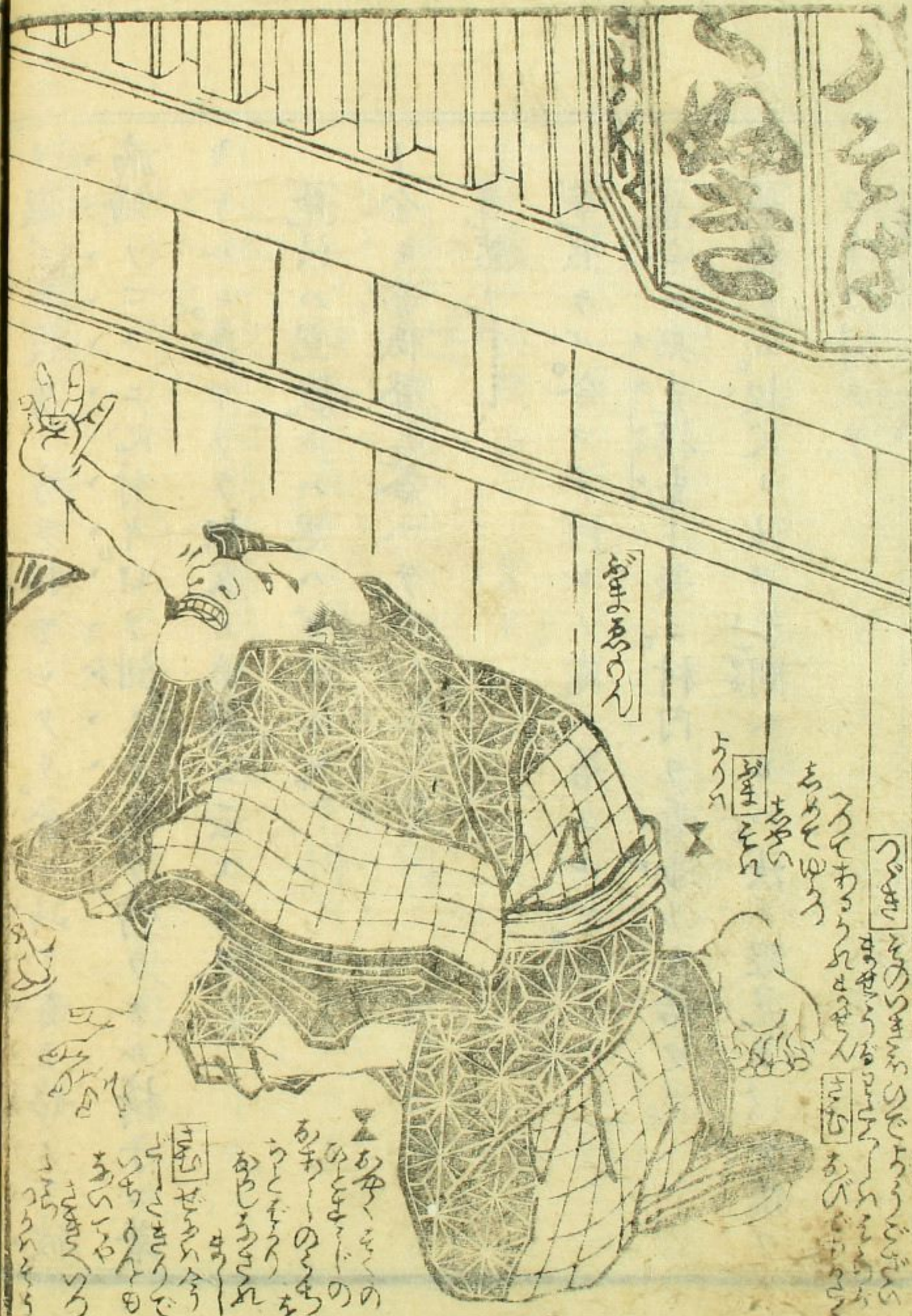


Handwritten text in the bottom right corner of the right page, including the characters "Sente" and "Sente".

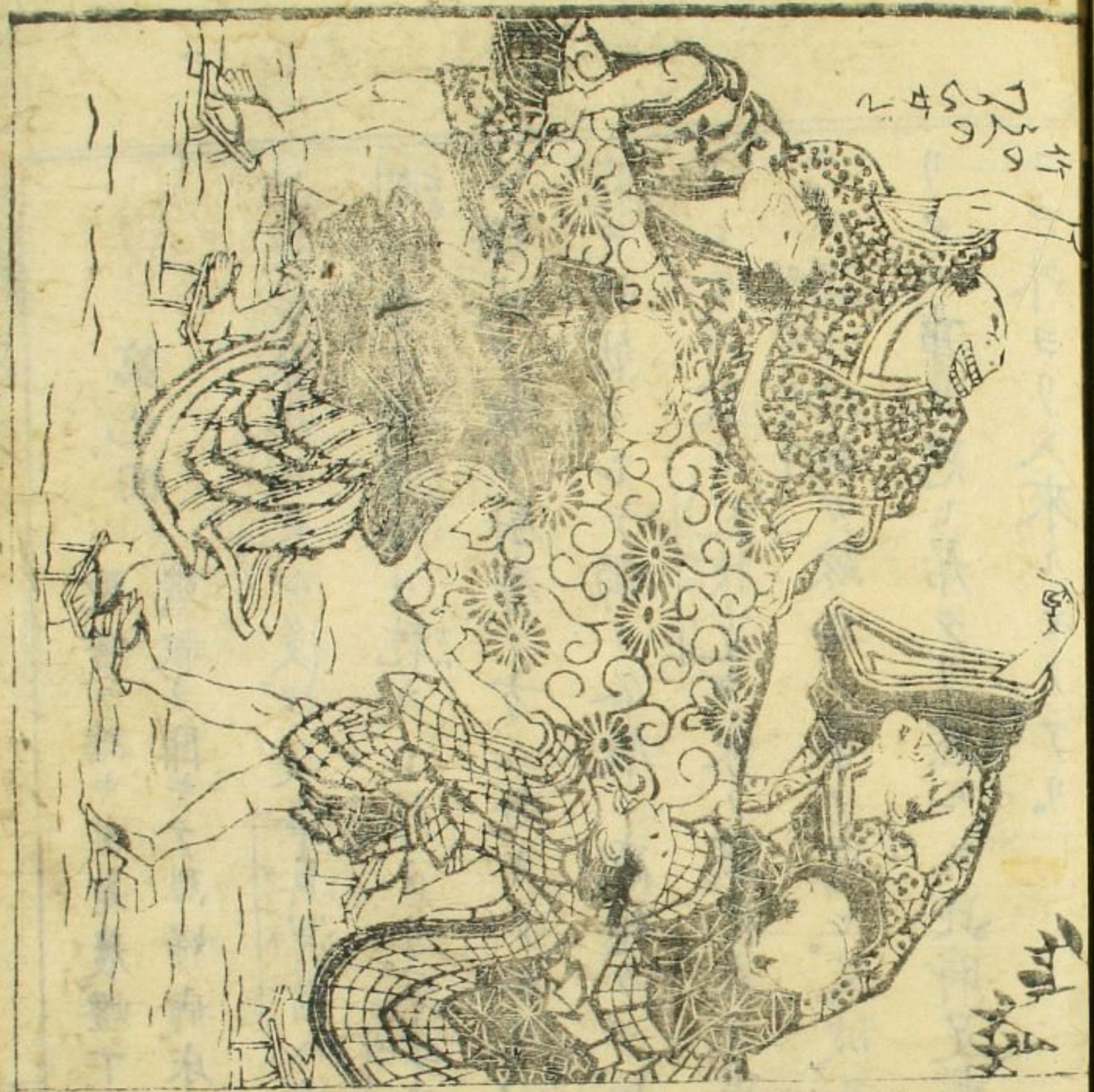


七ノハシ

二十四



二二二



11
226
254

Handwritten text in a cursive script, likely a description or list of items related to the illustration above. The text is arranged in several lines, with some words appearing to be in a non-Latin script.



Handwritten text in a cursive script, possibly a label or description for the illustration above.

Handwritten text in a cursive script, possibly a label or description for the illustration above.

Handwritten text in a cursive script, possibly a label or description for the illustration above.

Handwritten text in a cursive script, arranged in several lines. It appears to be a detailed description or list of items, possibly related to the illustration above.

早稲田大学図書館

011688991562