





一 飛柳 若乃乎 乃乃 乃乃 乃乃  
乃乃 乃乃 乃乃 乃乃 乃乃 乃乃  
乃乃 乃乃 乃乃 乃乃 乃乃 乃乃  
乃乃 乃乃 乃乃 乃乃 乃乃 乃乃  
乃乃 乃乃 乃乃 乃乃 乃乃 乃乃  
乃乃 乃乃 乃乃 乃乃 乃乃 乃乃  
乃乃 乃乃 乃乃 乃乃 乃乃 乃乃  
乃乃 乃乃 乃乃 乃乃 乃乃 乃乃  
乃乃 乃乃 乃乃 乃乃 乃乃 乃乃  
乃乃 乃乃 乃乃 乃乃 乃乃 乃乃

十月十五日

海邊の風景

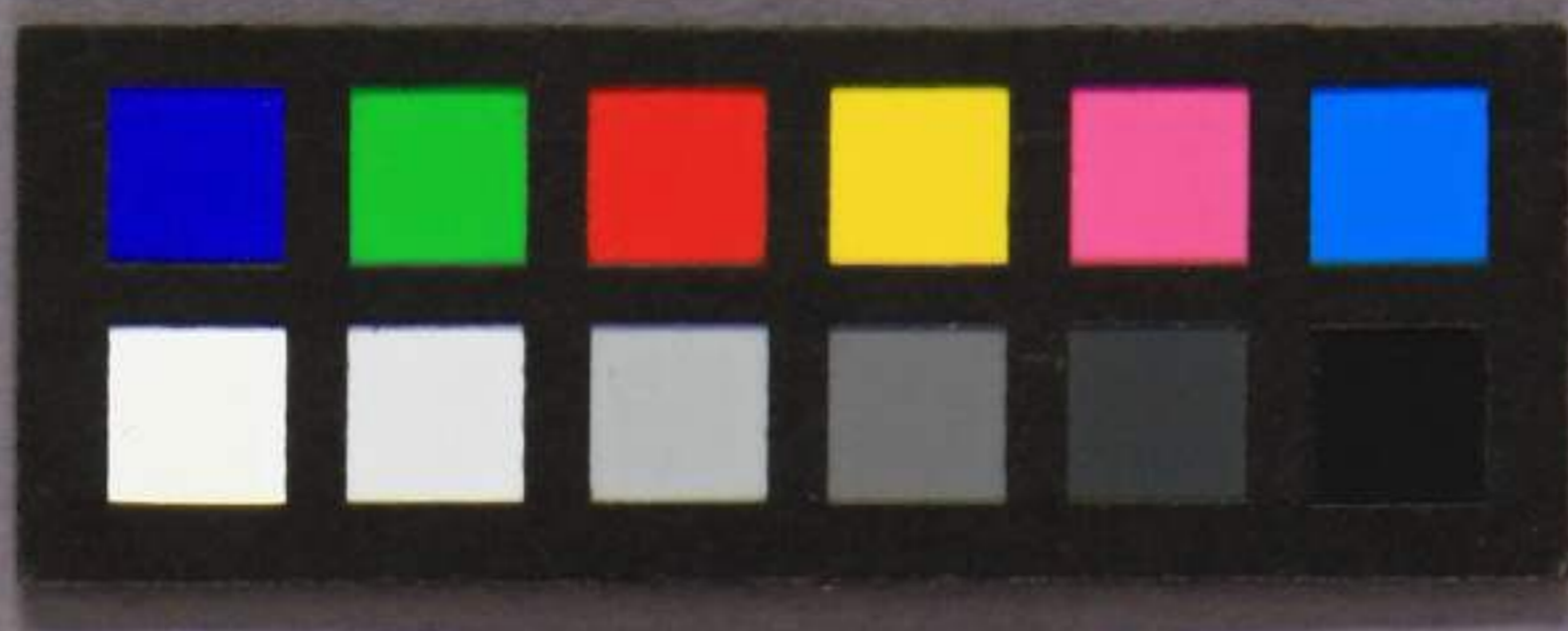
通和齋

録本海邊様



遊歴のついでに老達系公任殿  
お尋ねの飛石の飛石の飛石の飛石  
山ありてはみねの山ありてはみねの  
金枝のついでに老達系公任殿  
海邊の風景のついでに老達系公任殿





增裁 後井 享保十巳年

伴近孫惣云清孫也

新親也依此在在也

元荒川上巳惣所是史

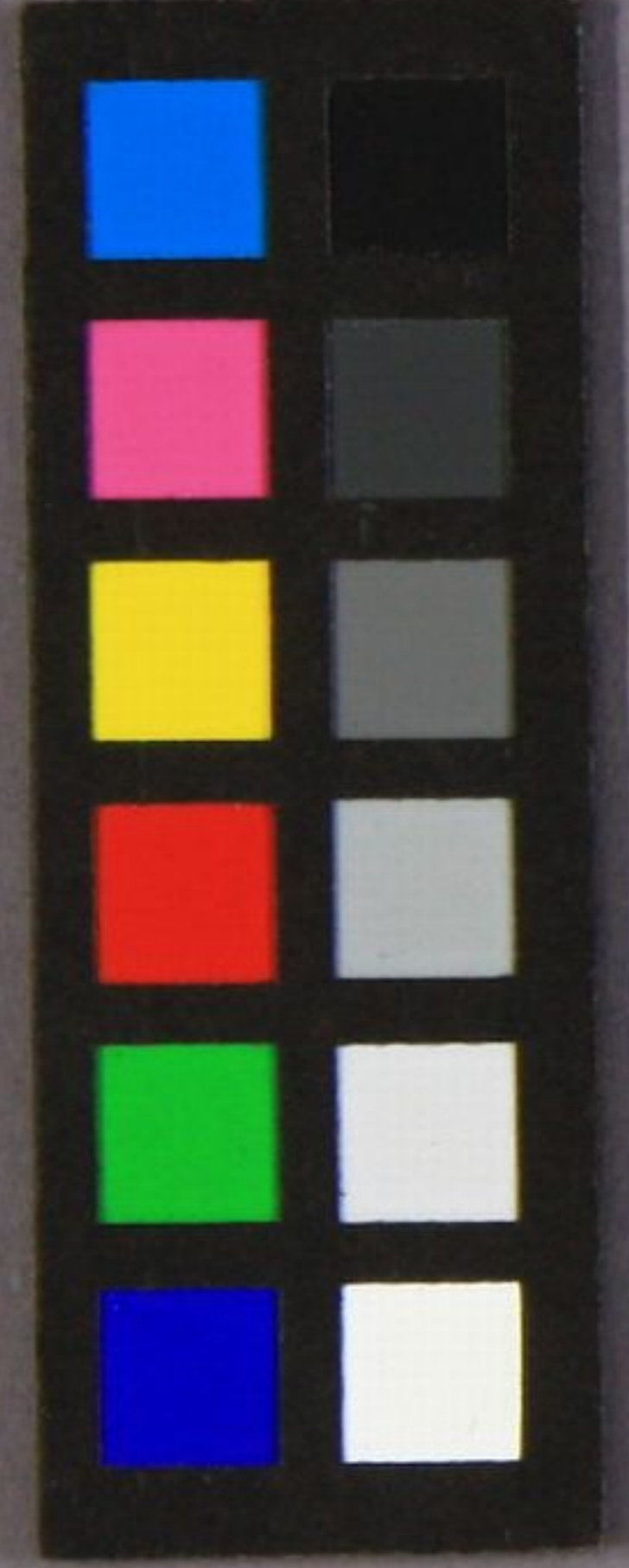
一同依越榎也

享保十巳年

享保十巳年







Handwritten text in cursive style, possibly a signature or address, located on the left side of the page.



Handwritten text in cursive style, located below the circular seal.

Handwritten text in cursive style, located in the middle left area of the page.

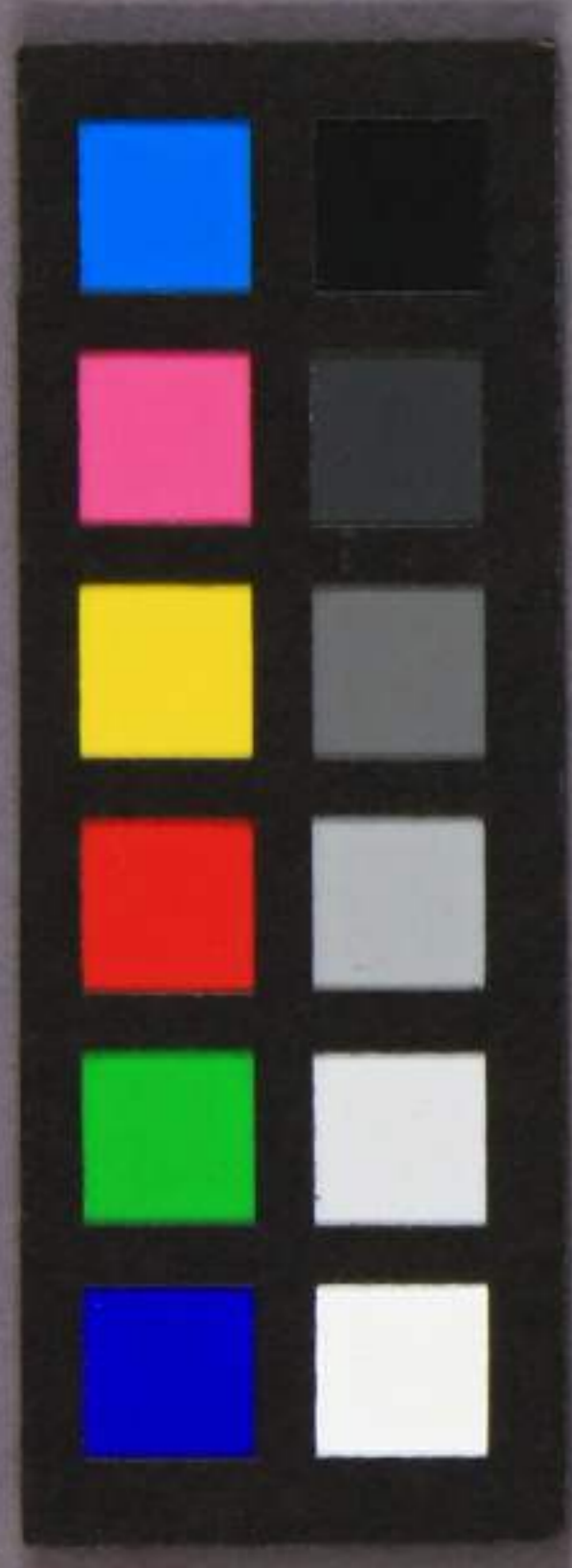
Main body of handwritten text in cursive style, consisting of several vertical columns of characters.

A single vertical line of handwritten text in cursive style, positioned to the right of the main body of text.

Handwritten text in cursive style, located on the right side of the page.







Handwritten text in cursive script on aged, yellowed paper. The text is arranged in vertical columns, likely representing a list or a continuous record. The characters are dark and somewhat faded, typical of old ink on paper. The paper shows signs of wear, including creases and discoloration.

