



名人墨
和名玉川
清分四

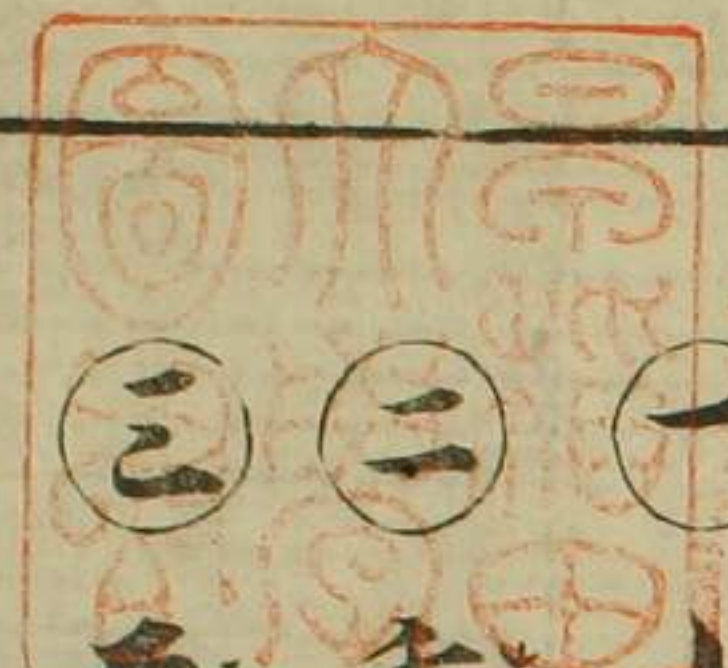
又 5
366
4



門 266
號 4
卷

和名及人かつくはる事目録

- ① 小室相府こむろあいのり之事 長和号
- ② 重衡しげひら之事 日永号
- ③ 平大納言たいらのり之事 日永号
- ④ 丹後たにがは府之事 日永号



卷八

和名

Handwritten text in a cursive script, likely a historical document or manuscript. The text is arranged in approximately 12 horizontal lines within a rectangular border. The script is dense and characteristic of early modern European cursive.

Handwritten text in a cursive script, likely a historical document or manuscript. The text is arranged in approximately 12 horizontal lines within a rectangular border. The script is dense and characteristic of early modern European cursive.

Handwritten text in a cursive script, likely a historical document or manuscript. The text is arranged in approximately 12 horizontal lines within a rectangular border. The script is dense and characteristic of early modern European cursive.

Handwritten text in a cursive script, likely a historical document or manuscript. The text is arranged in approximately 12 horizontal lines within a rectangular border. The script is dense and characteristic of early modern European cursive.

Handwritten text in a cursive script, likely Arabic or Persian, filling the right page of the manuscript. The text is arranged in approximately 15 horizontal lines, with some variations in line length and spacing. There are some small annotations or corrections written above certain words.

Handwritten text in a cursive script, likely Arabic or Persian, filling the left page of the manuscript. The text is arranged in approximately 15 horizontal lines, with some variations in line length and spacing. There are some small annotations or corrections written above certain words.

Small vertical text or marginalia on the left edge of the page.

Small vertical text or marginalia on the left edge of the page.

Handwritten text in a cursive script, likely Arabic or Persian, filling the right page of the manuscript. The text is written in a single column and is enclosed within a rectangular border.

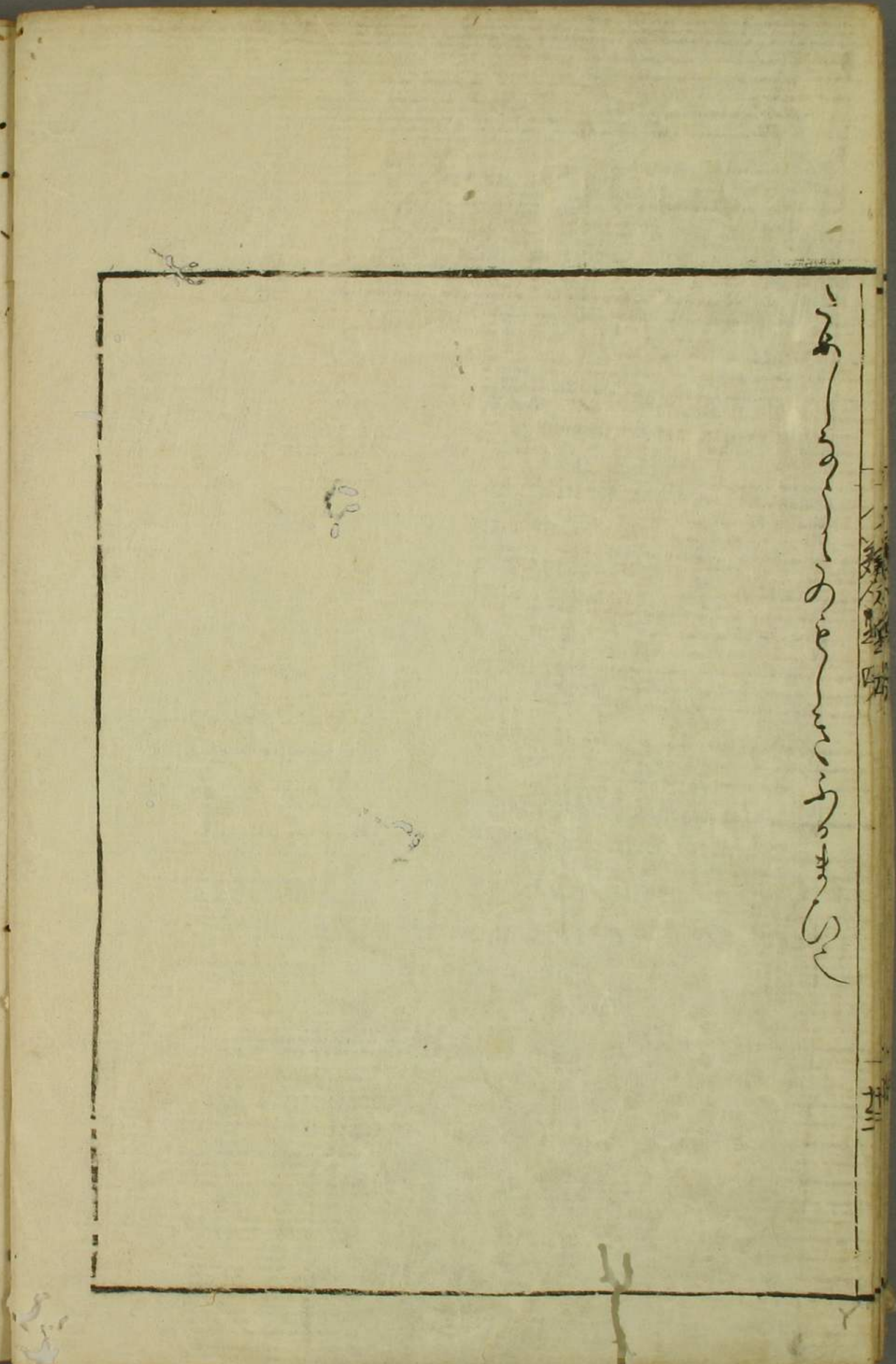
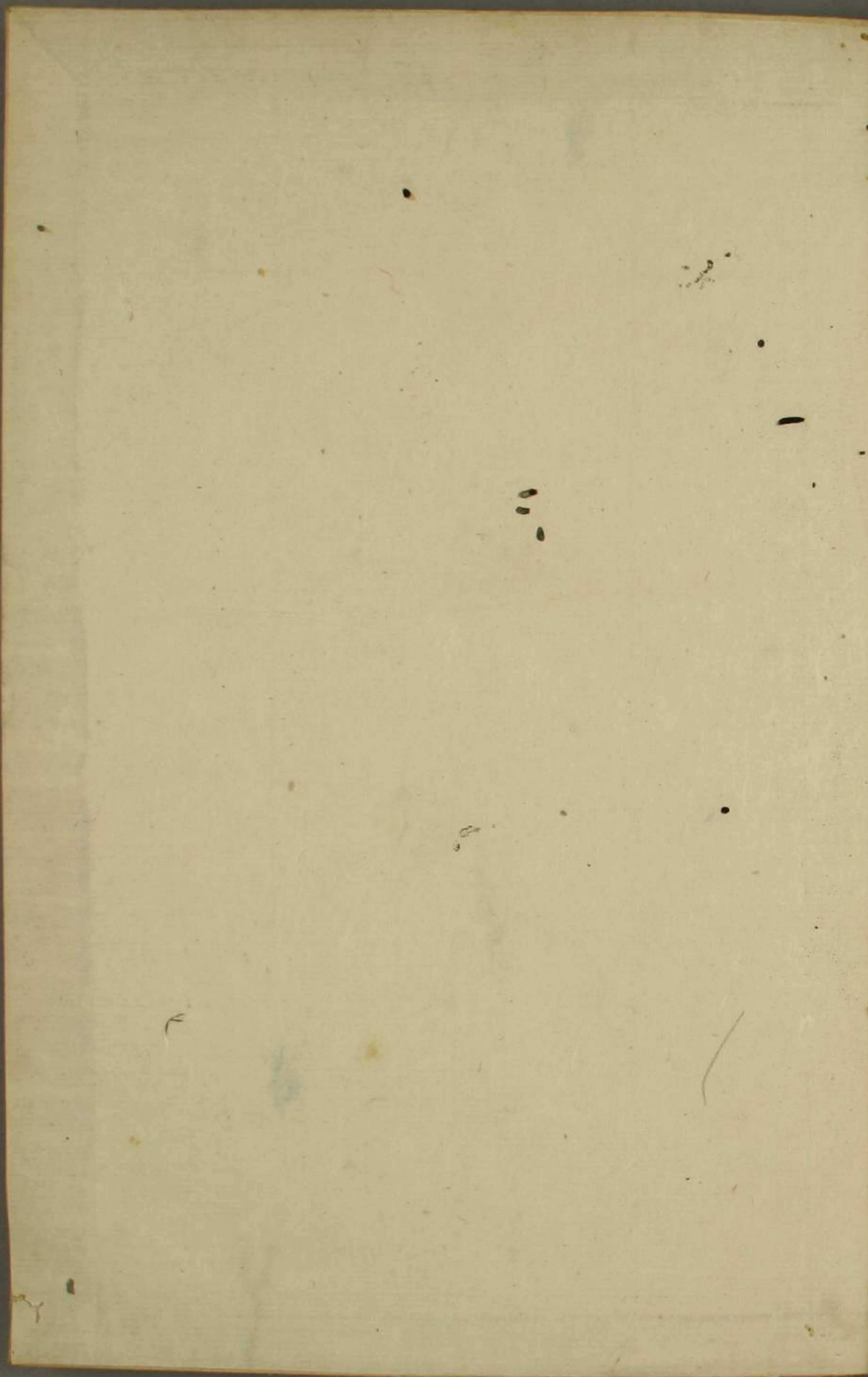
Handwritten text in a cursive script, likely Arabic or Persian, filling the left page of the manuscript. The text is written in a single column and is enclosed within a rectangular border.

Handwritten text in a cursive script, likely a historical document or manuscript. The text is written in a dark ink on aged, yellowed paper. It consists of approximately 15 lines of text, with some words written in a larger, more decorative hand. The script is dense and flowing, characteristic of a cursive style. There are some small annotations or corrections written above certain words.

Handwritten text in a cursive script, likely a historical document or manuscript. The text is written in a dark ink on aged, yellowed paper. It consists of approximately 15 lines of text, with some words written in a larger, more decorative hand. The script is dense and flowing, characteristic of a cursive style. There are some small annotations or corrections written above certain words.

Handwritten text in a cursive script, likely a historical document or manuscript. The text is written in a single column on the right page of an open book. The script is dense and flowing, with many loops and flourishes. There are some small annotations or corrections written above certain lines of text. The paper shows signs of age, including some staining and wear at the edges.

Handwritten text in a cursive script, likely a historical document or manuscript. The text is written in a single column on the left page of an open book. The script is dense and flowing, with many loops and flourishes. There are some small annotations or corrections written above certain lines of text. The paper shows signs of age, including some staining and wear at the edges.



The ... of ...

