



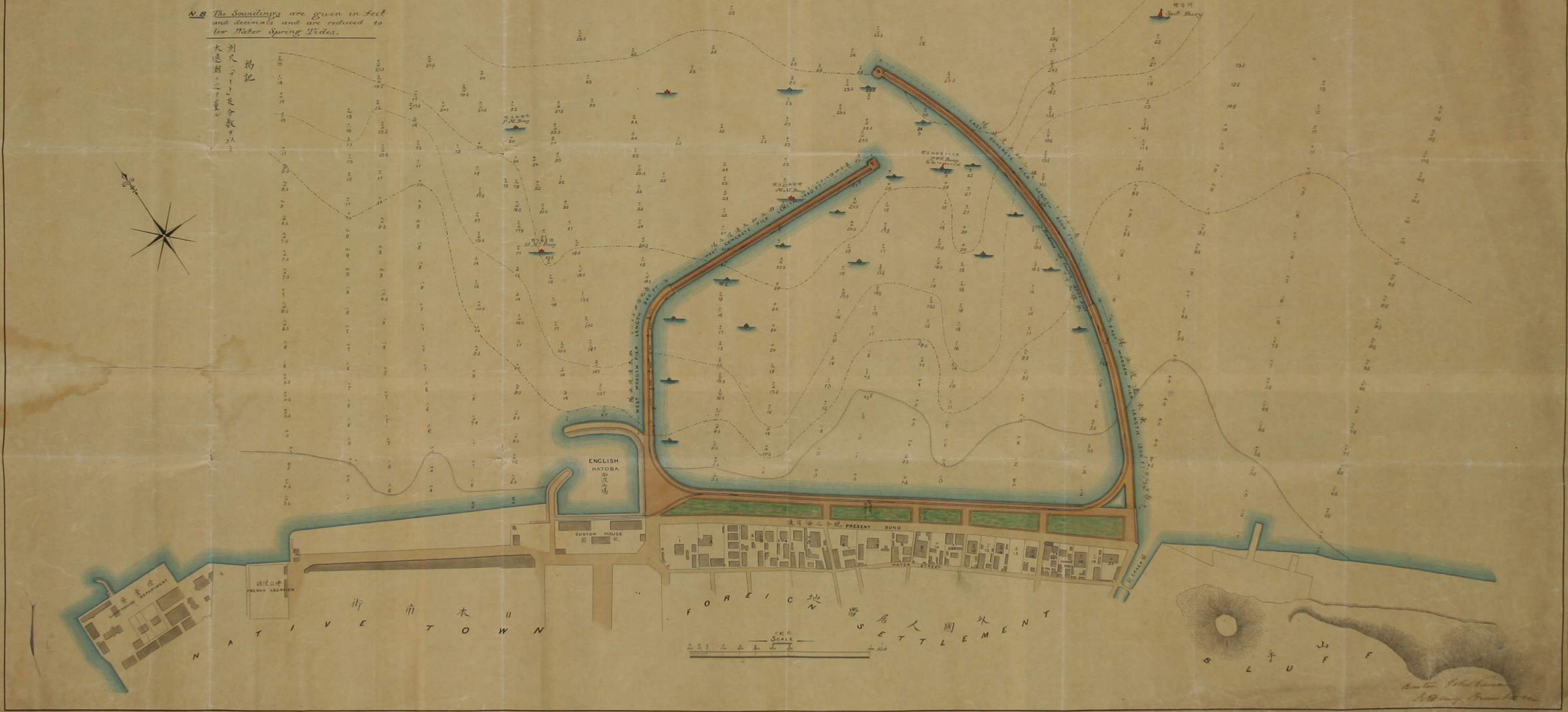
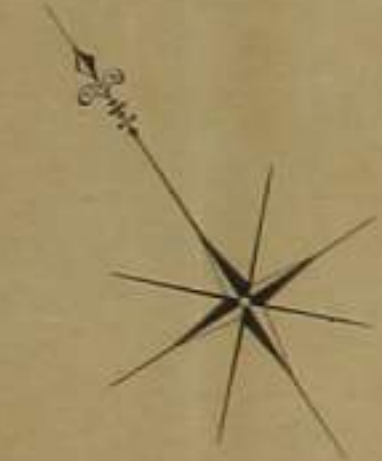
414
3003
1

圖畫第
DRAWING No 1.

橫 港
YOKOHAMA HARBOUR
GENERAL PLAN

N.B. The Soundings are given in feet and decimals and are reduced to low Water Spring Tides.

揚記
測尺一丁一丁是各教以寸
大港前一二寸量也



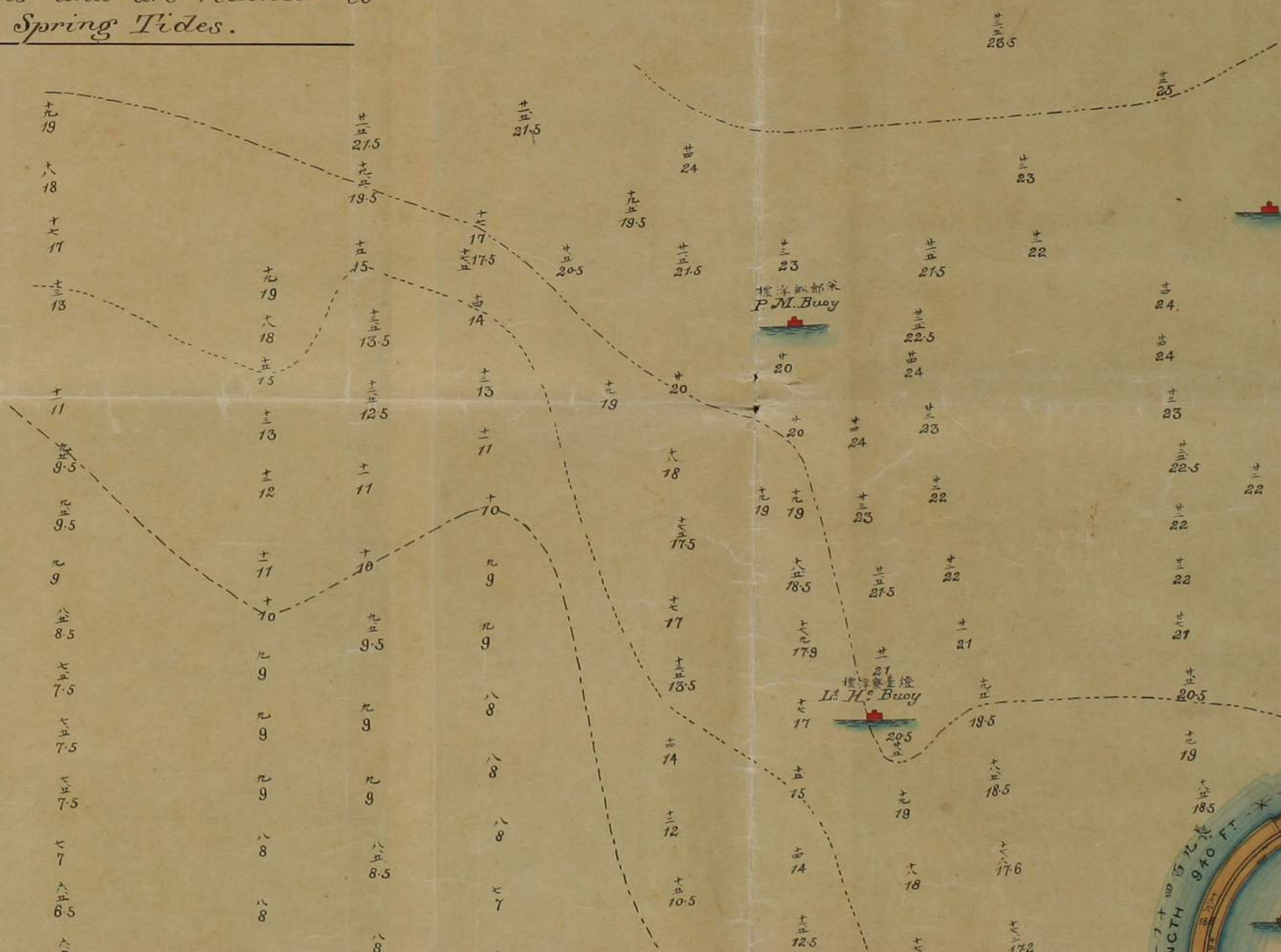
大正十一年一月一日
A. H. ...
...

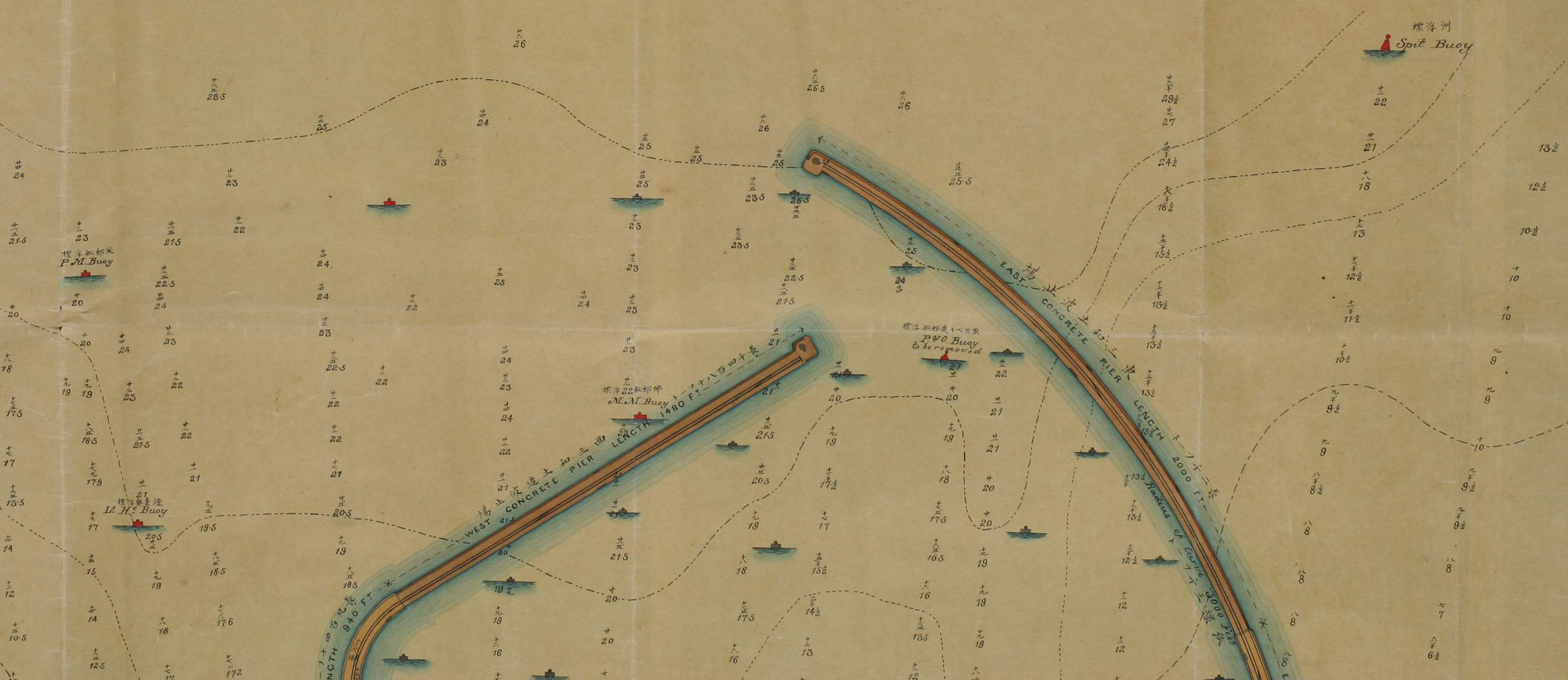


港 濱 横
YOKOHAMA HARBOUR
圖 林 惣
GENERAL PLAN

N.B. The Soundings are given in feet and decimals and are reduced to low Water Spring Tides.

揚記
 測尺ハブトト及分數ヲ以テ
 大退潮ニシテ之ヲ量ル





標浮部米
P.M. Buoy

標浮部米
M.M. Buoy
1480 FT. LENGTH

標浮部米
P.W. Buoy
to be removed

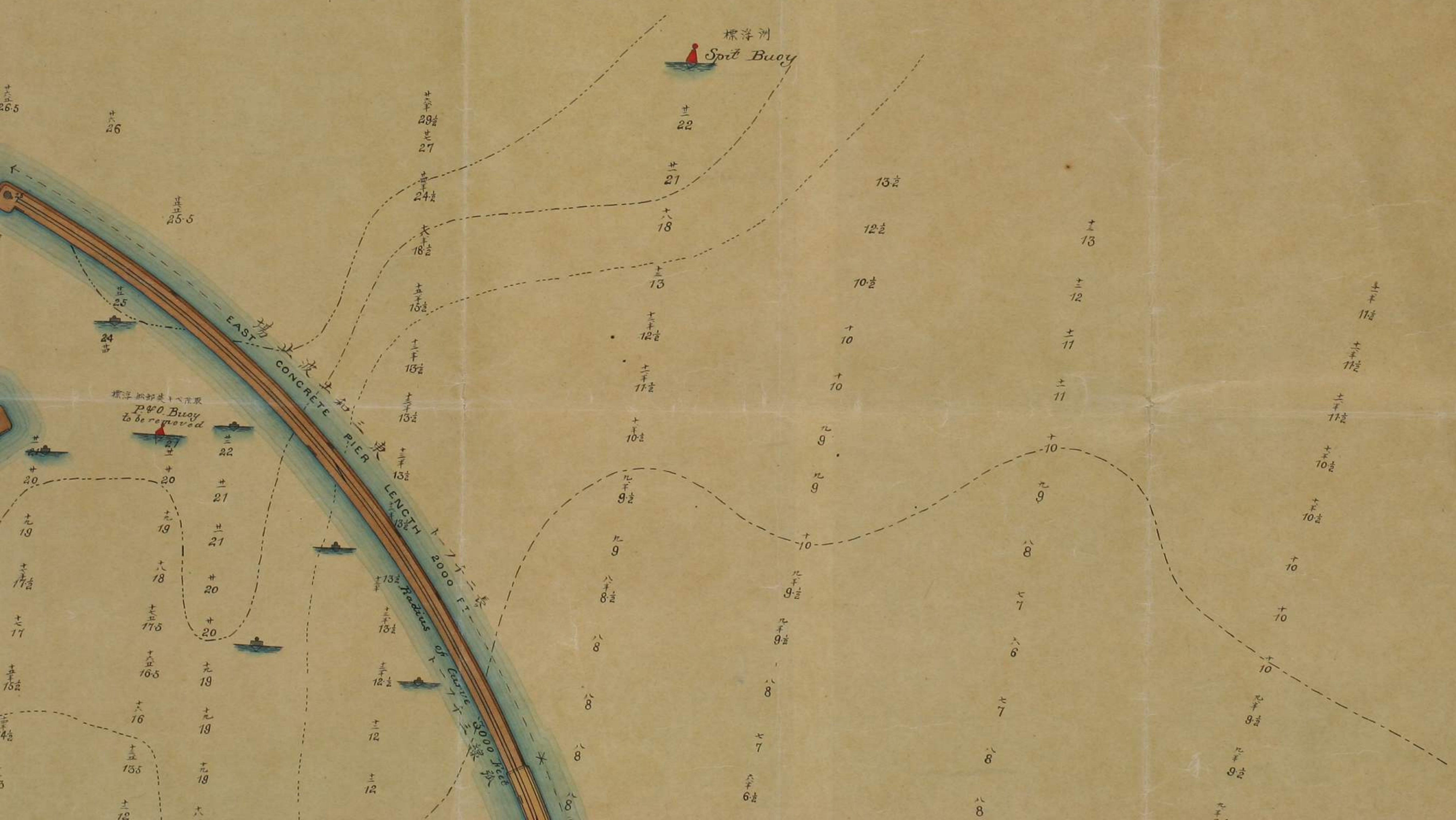
標浮列
Spirit Buoy

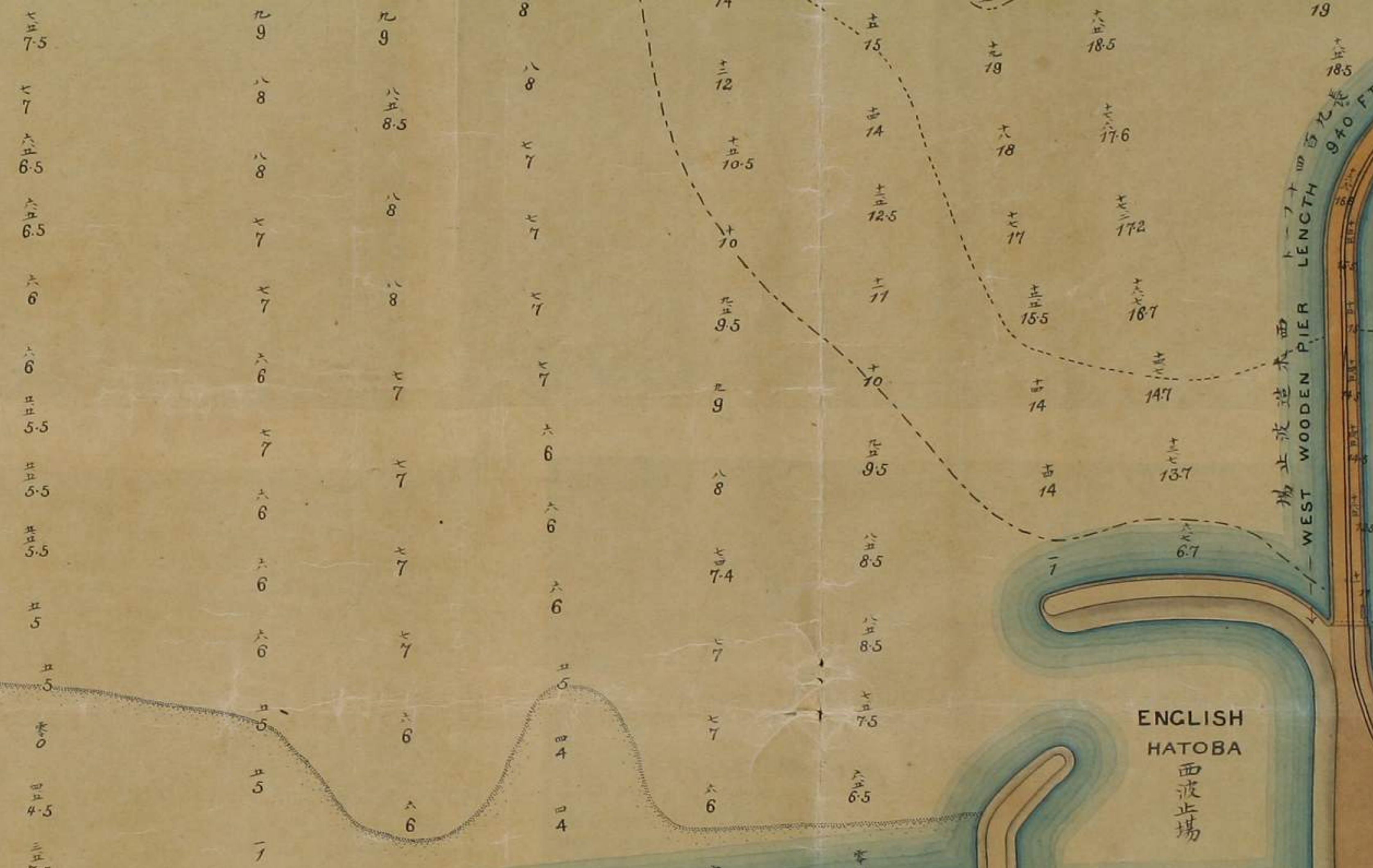
場止波造土和三四
WEST CONCRETE PIER
1480 FT. LENGTH

場止波土和二
EAST CONCRETE PIER
2000 FT. LENGTH

Radius of Curve 600 Feet

圖壹第
DRAWING No 1.





西波止場 西側碼頭 940 FT. 長

ENGLISH HATOBA
西波止場

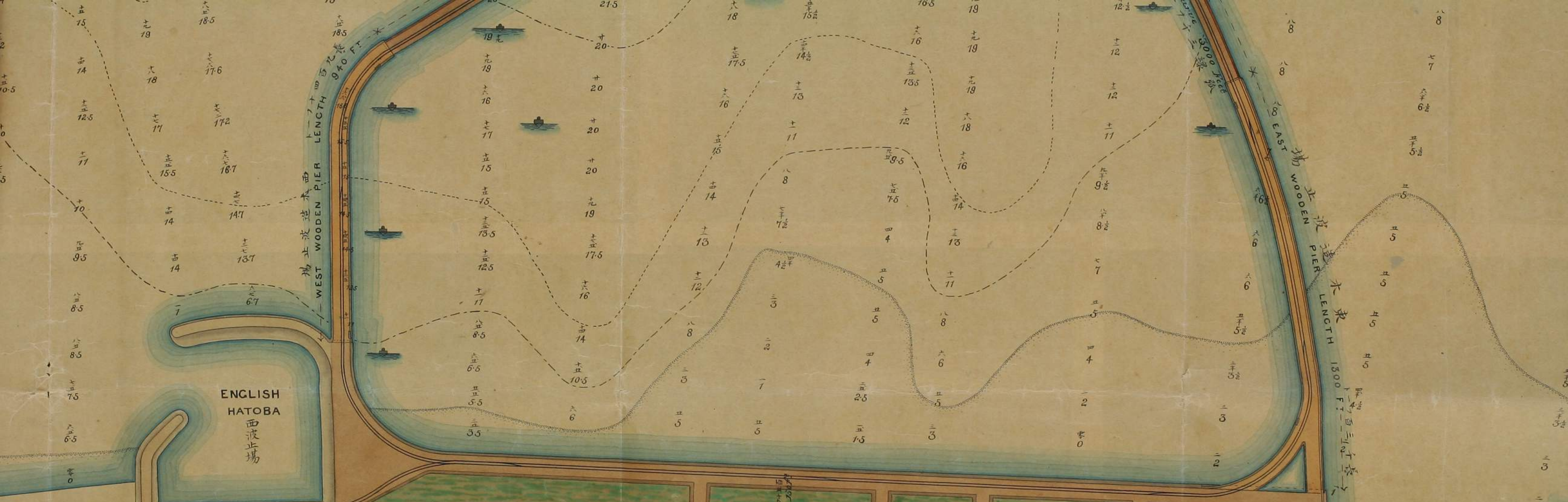
CUSTOM HOUSE
關 稅

館使公佛
FRENCH LEGATION

燈臺部
Lighthouse DEPARTMENT

街 市 本 日
N A T I V E T O W N

N



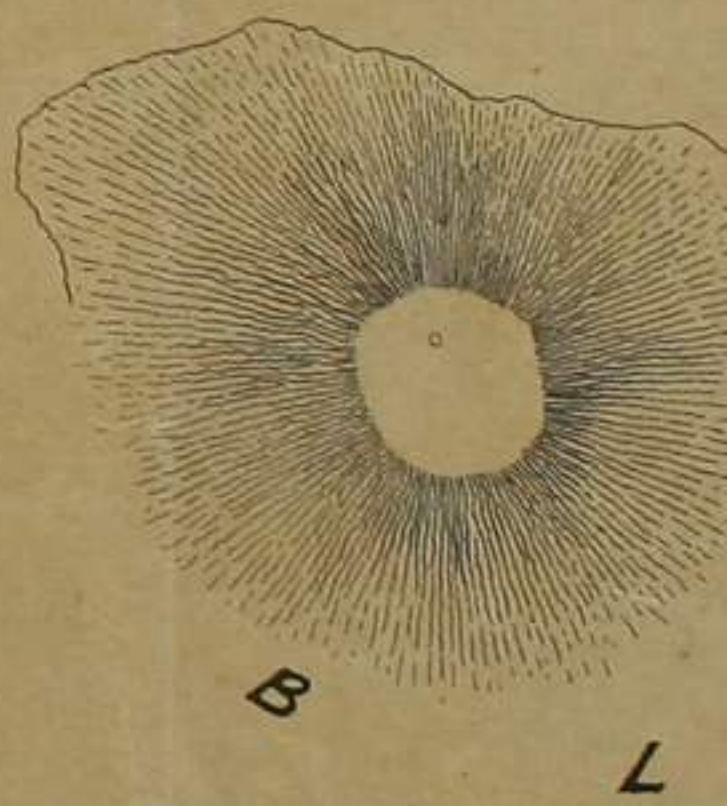
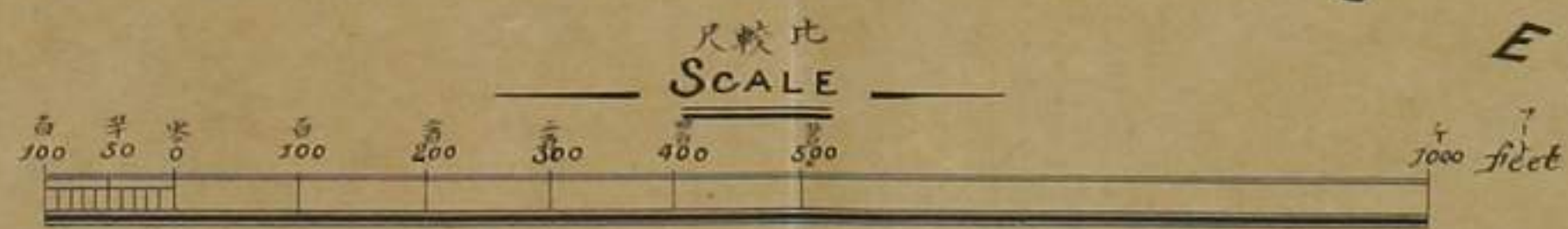
ENGLISH HATOBA
西波止場

CUSTOM HOUSE
關 稅

通岸海之今現 PRESENT BUND

WATER STREET

F O R E I G N
雷 居 人 國 外
S E T T L E M E N T





居人國外
 SETTLEMENT



Sketch of Yokohama
 William Brewster

大正十一年四月
 限侯爵邸寄贈