



傾城ノ清傳

武松

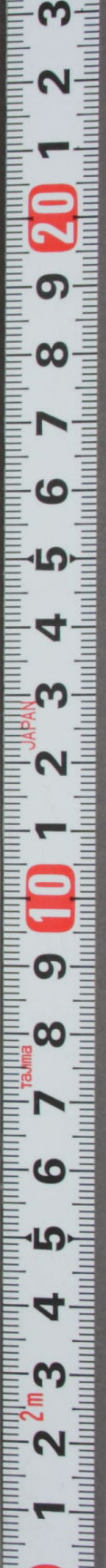
第五編

馬琴著

國安画

上帙

へ13
3019
4



第五編

傾城水滸傳年々市評判宜浦板元製衣本敏忌昌仕具加至極大其
在好以後之作者曲亭公利相頼當年志四編五編引續也板依其
別の紙骨打以妙他之者公利是之並合卷仕以有表紙紙損小易く
退之由未活所指と遊以所為意極方由為之或不宜と由及取以好當仕
上本仕表紙仕之未格別念入中後之後と並合卷同格下也仕賣上以
むけに編五編志及中毎編上かよの仕後々とも並合卷仕仕の間

曲亭馬琴著

傾城水滸 傳第五編

歌川國安画
上帙卷之上

特
へ13
3019
4

傾城水滸集

紛悖逆兼久間。一旦雲開
復見天草木百年新雨露車
書萬里舊江山尋常巷陌陳
羅綺幾處樓臺奏管絃人樂
太平無事日鶯花無限日高
眠 文政戊子春錄并刊行
曲亭馬琴著
書肆仙鶴堂梓
歌川國安畫

壹

著述の勞の看官あり。壁田翁苦辛の粒米饑。雛狗の五里山へ
投ぐ者さる。嗚呼書作。名才子も漫。摸擬するもの皆等類。免。胎換骨の段。造化の巧。欺。接
木の花は異なる。彼桃。櫻。丹楓。看官の臺を
忘れるの。根。他木。花を。實を
補。胎換骨の妙。傾城水滸の二書。亦その
一段。接木。羅氏の水滸を其。作者の趣向。接合。兔園冊
子の小盆。栽。書齋の室。養食。是。五編の花の。日
同。安。骨折。甲斐。仙鶴堂。春袋の上。本
老。何処。融。包。評。啼。東。久。作者。木
今。二十八年。休。續。筆。實。如。商。賣。實。利。板。元。の。耳。ふ。く。溢。る
ま。敬。あ。れ。と。書。序。を。

文政十一年春正月吉日新版

曲亭馬琴撰



女行者竹世

虎

兄

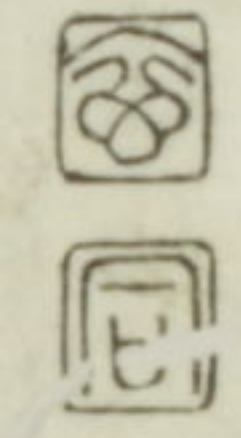
石

たのび

あまのこ

十の鐵門

あまのこ



後家持

西門屋阿啓



雨雲乃ある

のびくち

のら月も

あまのこ

ん

と

ん

ん

餅師
一寸星代

餅造
食則
冬品

関防人
金運助





のりぬの
 矢立平
 祖を重んずる
 牡鹿やのりぬ
 まみつる及宿

天野判官遠光

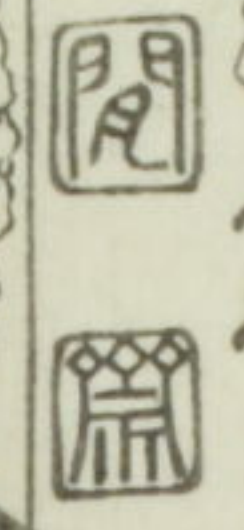
夏毛屋
卯亥藏



世に
 風流客の
 金持志ある

水菓子
 商人
 野二

煎茶店 阿温





おれこ
大葉子
妙子
母

大葉子母



寒く
解が誰
野あも
耳や
鈴菜
播む
丁海

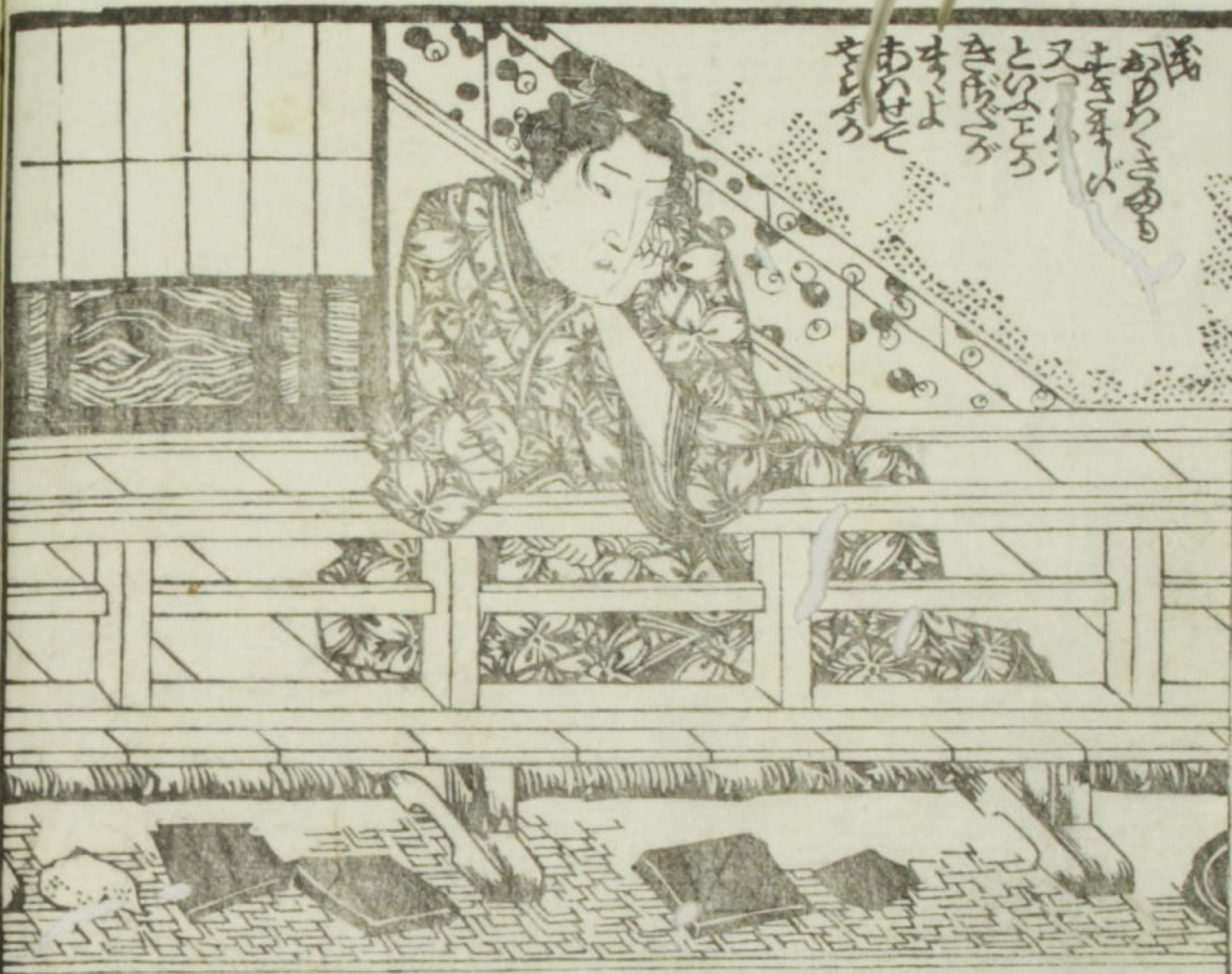
四
高

舞扇
園喜代

僧
茶毘
久念

大葉子母

三



Vertical columns of Japanese text, likely a transcription of the scene's dialogue or a commentary. The text is written in a cursive style, typical of Edo-period woodblock prints. It appears to be a continuation of the narrative from the illustration above.



五平の女

今更なれば...
 月々の...
 あはれ...
 五平...



五平...
 茶...
 五平...



五平...

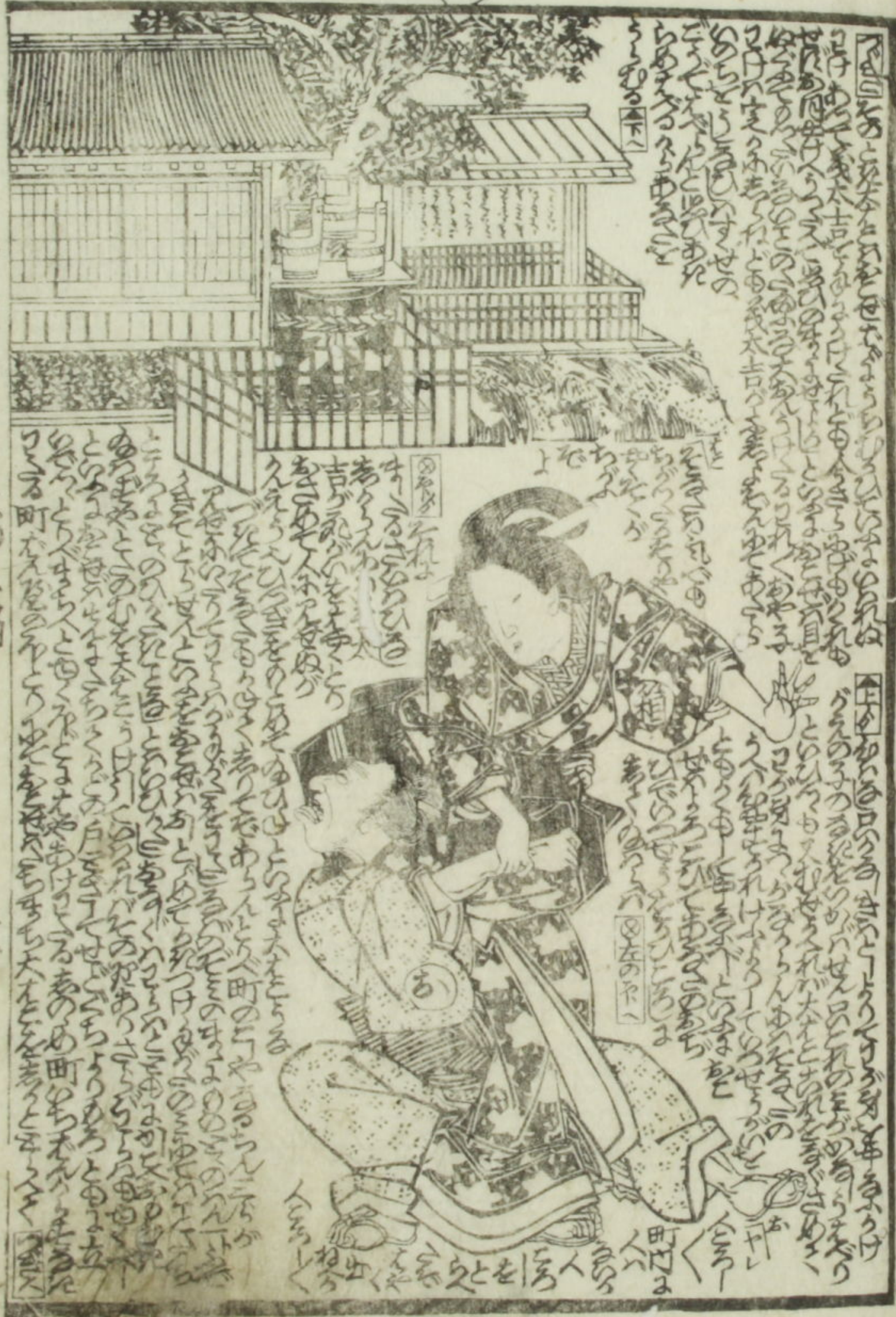
曲亭馬琴著

傾城水滸
傳第五編

歌川國安画
上帙卷之下

大正八年一月一日

大正八年一月一日



馬琴翻按
國安寫真



星を戴岩根踏之精杵米白水の山残踏る宵月小
猛虎を仆せ巖の森獵戸殿計の賽華衣冠若忠道の
曾待態も時よあゝ勇婦竹世一妹嫁の叔徒彌

傾城水滸傳第五編之三

難を避福鬼を脱せ八百日也越の長濱うち過く
佐渡は横天の河牽牛織女の恨小袖の折瀧の若葉柴が
東道儲も殊ゆらふ 春雨大箱胞姉妹の旅の隠宅
けいせいすいすいごんごのへんのい

この世の世間は... 浮世草子の物語... 江戸の町... 浮世草子の物語... 江戸の町... 浮世草子の物語... 江戸の町...



この世の世間は... 浮世草子の物語... 江戸の町... 浮世草子の物語... 江戸の町... 浮世草子の物語... 江戸の町...





しんせいのせいとせし五編

十一

還魂紙料 古画八二冊出来 柳亭種彦隨筆

藏筆 遊言画手本 一名鳥羽繪早

廣見画 懷中早割大全 小本あり

新形漆彩目 挿花手引 前編出来

芝居似顔早椿古 後編 全一冊

役者似顔早椿古 後編 全一冊

懷寶 花乃都路全 法大人の夜敷

傾城水許傳 曲亭馬琴作

三國天殺書 五柳亭徳外作

喜怨哀樂堪忍囊 六冊

市川三州作

突佃天綱嶋 六冊

忠臣藏 伊長御節用 上冊

外傳 伊長御節用 上冊

道外武者六年樂 一三冊

有喜世諺草 同二冊

継子立波の濡衣 同三冊

金々歌夢之世話 同三冊

美艶仙香 同三冊

隅田川兩岸 同三冊

江名所東鑑 同三冊

江名所物見 同三冊

右之巻 同三冊

内之巻 同三冊

傾城水滸傳年々由評判宜浦板元製本致其冒位其加至極其多
其好以後之他者曲亭公翁と相頼當年と四編五編引續出板休其
別を其骨朽以妙他より其処是と並合卷仕有表紙紙亦損下易く
退々出未其指と遊以少其振方也其成不宜と由及取以手當年分
上本仕表紙仕立未格別念入中修之後と並合卷同格下直其賣上の
心以四編五編と其及中毎編上本よの仕後々との並合卷と仕同

曲亭馬琴著

傾城水滸

傳第五編

歌川國安画

下帙卷之上

サハシツノ...

七



Handwritten text in vertical columns, likely a commentary or a list of items related to the illustration. The text is written in a cursive style.

Handwritten text in vertical columns, continuing the commentary or list. The text is written in a cursive style.

Handwritten text in vertical columns, continuing the commentary or list. The text is written in a cursive style.



Handwritten text in vertical columns, likely a commentary or a list of items related to the illustration. The text is written in a cursive style.

Handwritten text in vertical columns, continuing the commentary or list. The text is written in a cursive style.

Handwritten text in vertical columns, continuing the commentary or list. The text is written in a cursive style.

Handwritten text in vertical columns, continuing the commentary or list. The text is written in a cursive style.

Handwritten text in vertical columns, likely a commentary or translation of the scene depicted in the illustration. The text is written in a cursive style, typical of Edo-period Japanese manuscripts.

Handwritten text in vertical columns, continuing the commentary or translation from the right page. The text is written in a cursive style, typical of Edo-period Japanese manuscripts.





十

下



Vertical Japanese text columns on the right page, continuing the narrative or providing commentary on the illustrations above.

Vertical text on the right edge of the page, possibly a page number or chapter indicator.

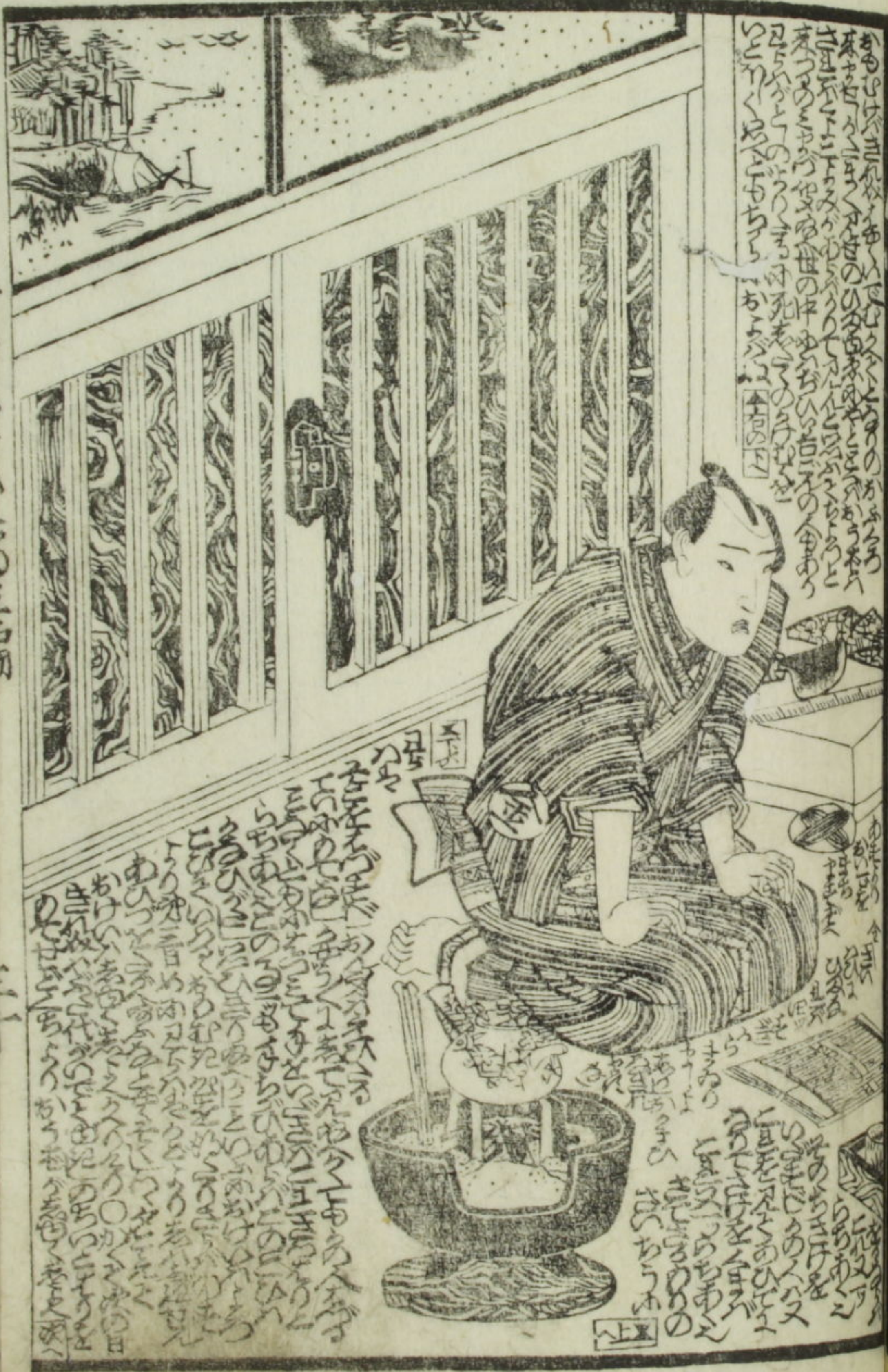


Handwritten text in a cursive script, likely a play script, surrounding the illustration of the elderly woman. The text is arranged in vertical columns, with some lines appearing to be dialogue or stage directions.



Handwritten text in a cursive script, likely a play script, surrounding the illustration of the kneeling woman. The text is arranged in vertical columns, with some lines appearing to be dialogue or stage directions.





Vertical text on the left margin of the left page, likely a chapter title or page number.

Vertical text on the right margin of the right page, likely a chapter title or page number.

Vertical text block located above the man's head in the left illustration.

Vertical text block located above the woman's head in the right illustration.

Vertical text block located below the man's head in the left illustration.

Vertical text block located below the woman's head in the right illustration.

馬琴作

東の国は... 西の国は... 南の国は... 北の国は... 東の国は... 西の国は... 南の国は... 北の国は... 東の国は... 西の国は... 南の国は... 北の国は...

傾城大雙六 初編 狂舟入

江戸名物 雙六 日本橋より振出

風流三升 雙六

晴雨両天傘 大形代領七代目

黒油美玄香 軍八綱 妙業

蘭傳 靈應丹功録 素々

賣弘所 同 通油町 河内屋長兵衛 鶴屋喜右衛門

はれはま... 大双六... 有る... 二編目... 乃ち... 何れ... 出...



曲亭馬琴著

傾城水滸

傳第五編

歌川國安画

下帙卷之下

力
廿
八
二
五
七
冊

廿
五

曲亭馬琴著 川國安畫

この編人心を愉快とせ

松枝の竹世が仇撃手

傾城水滸傳第五編之四

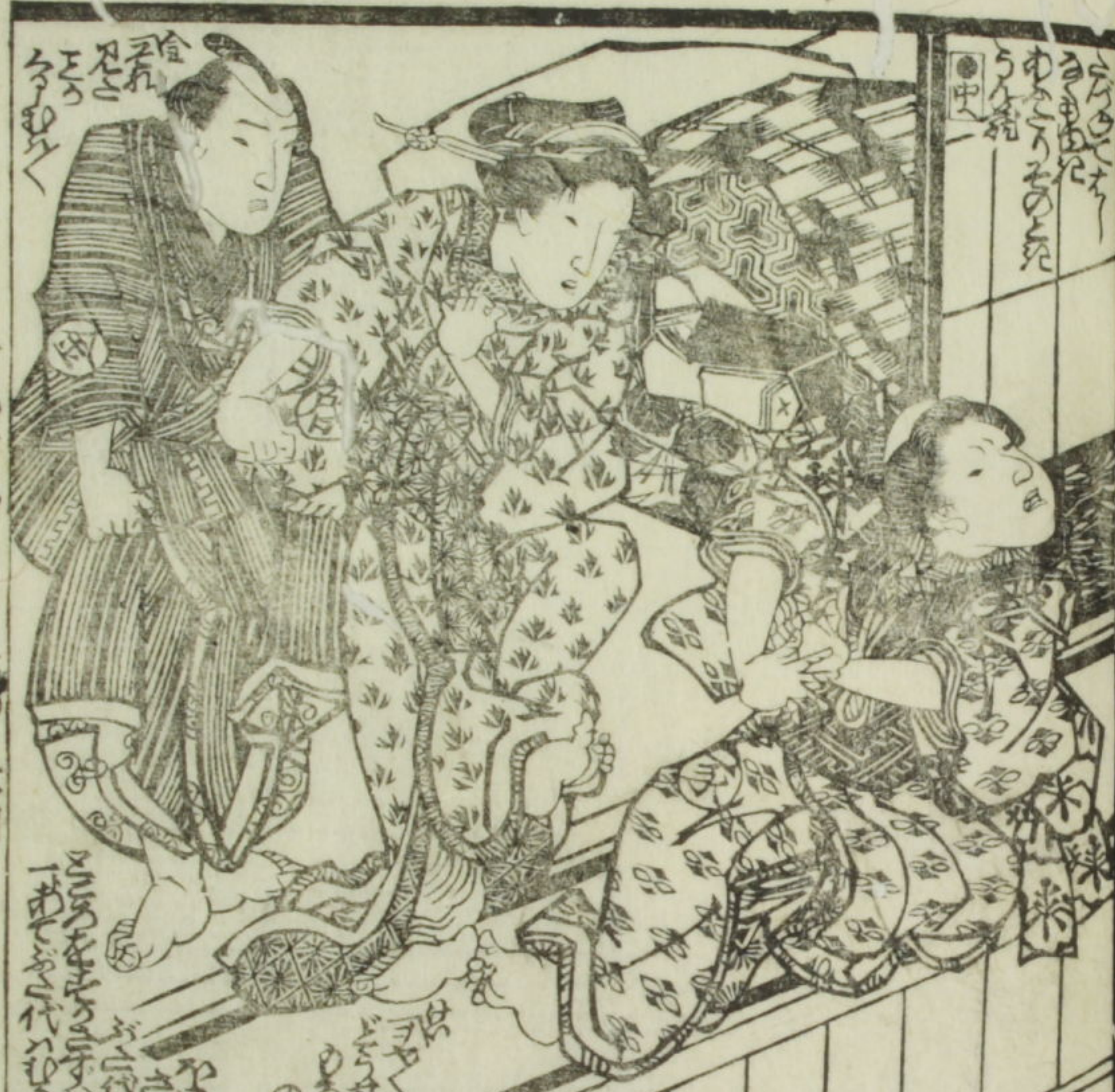
とやりのあぶら丁はる屋板

盡んとくく又起休

一百八勇婦の列傳







Handwritten text in a cursive script, likely a dialogue or narrative, surrounding the illustration of the three women.

Handwritten text in a cursive script, likely a dialogue or narrative, located at the top of the right page.



Handwritten text in a cursive script, likely a dialogue or narrative, surrounding the illustration of the two men.



Handwritten text in the upper left corner of the page, including the characters '九七五'.

Large blocks of handwritten Japanese text surrounding the illustration, including the characters '九七五' and '世田'.



Handwritten text in the upper right corner of the page.

Large blocks of handwritten Japanese text surrounding the illustration.

Handwritten text in the top margin of the left page, including the characters "諸" and "勿".



Vertical text on the left side of the page: 廿八廿九二巻五編

廿五

Handwritten text in the top margin of the right page.



Vertical text on the right side of the page.

廿五

Vertical columns of handwritten Japanese text, likely a narrative or commentary, surrounding the illustration on the left page.



Vertical columns of handwritten Japanese text, likely a narrative or commentary, surrounding the illustration on the right page.

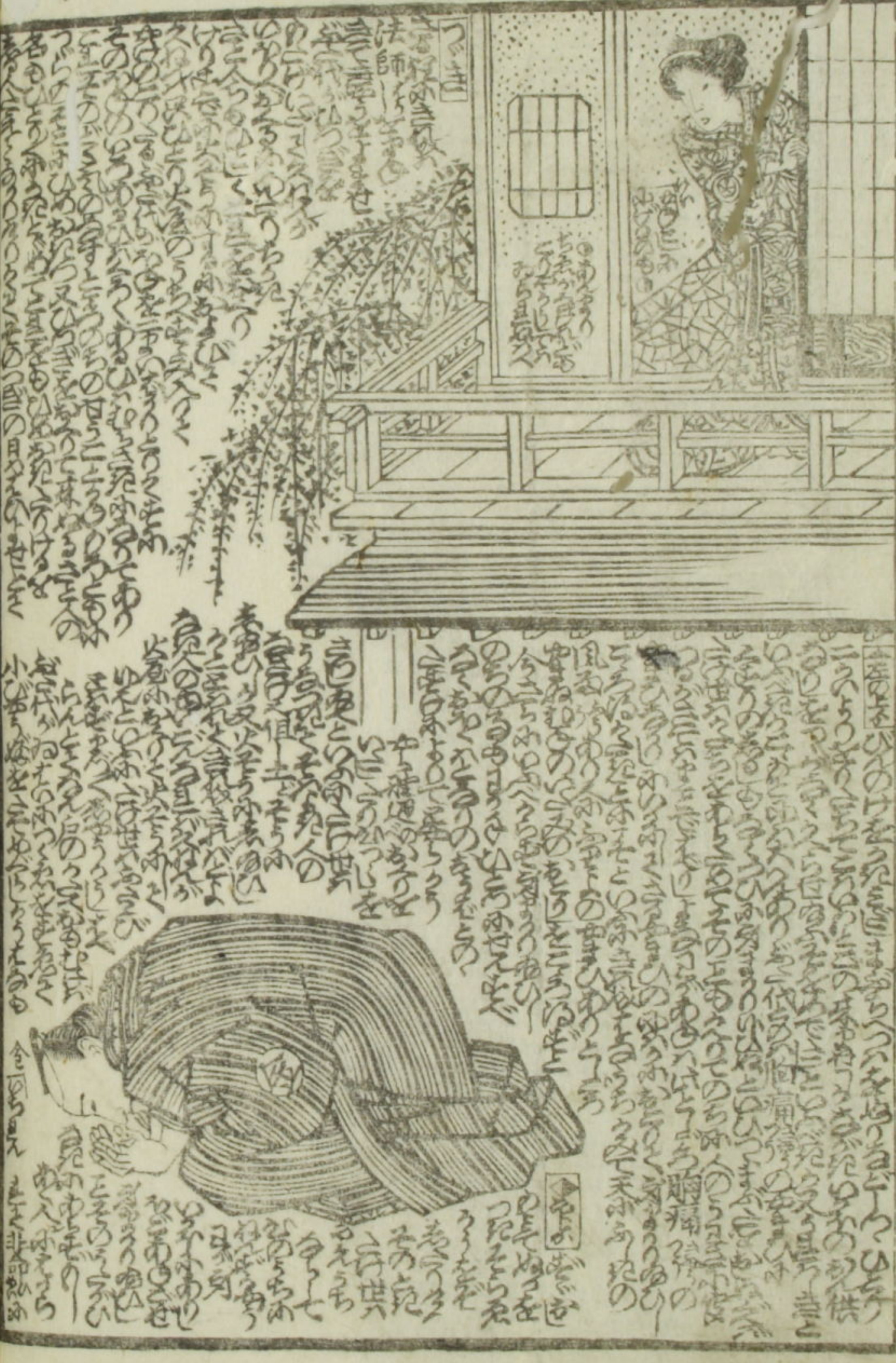
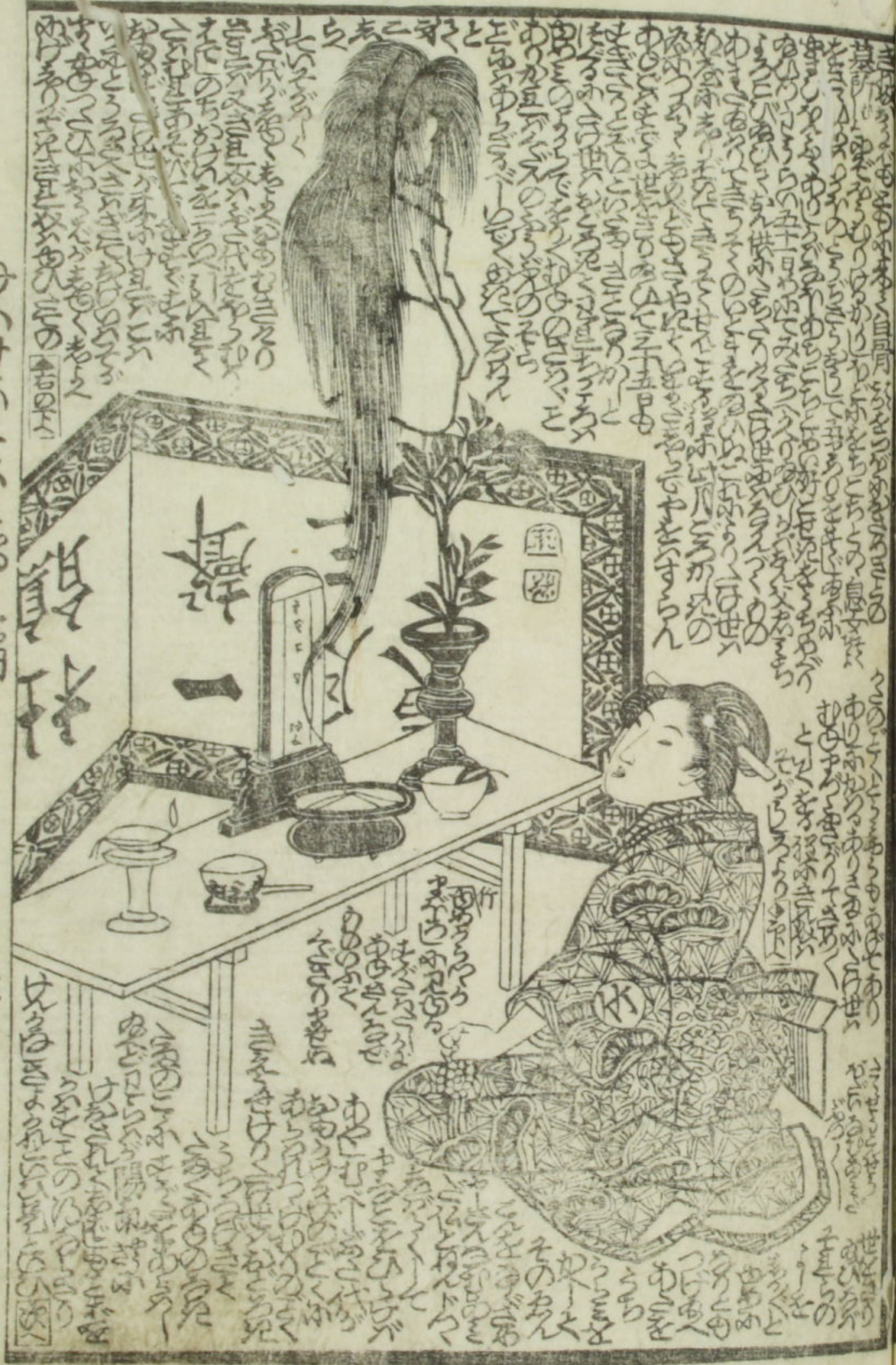


Vertical text on the left margin of the left page.

Vertical text on the left margin of the left page.

Vertical text on the right margin of the right page.

Vertical text on the right margin of the right page.



Handwritten text in a cursive script, likely a form of shorthand or a specific dialect, filling the left page of the manuscript.

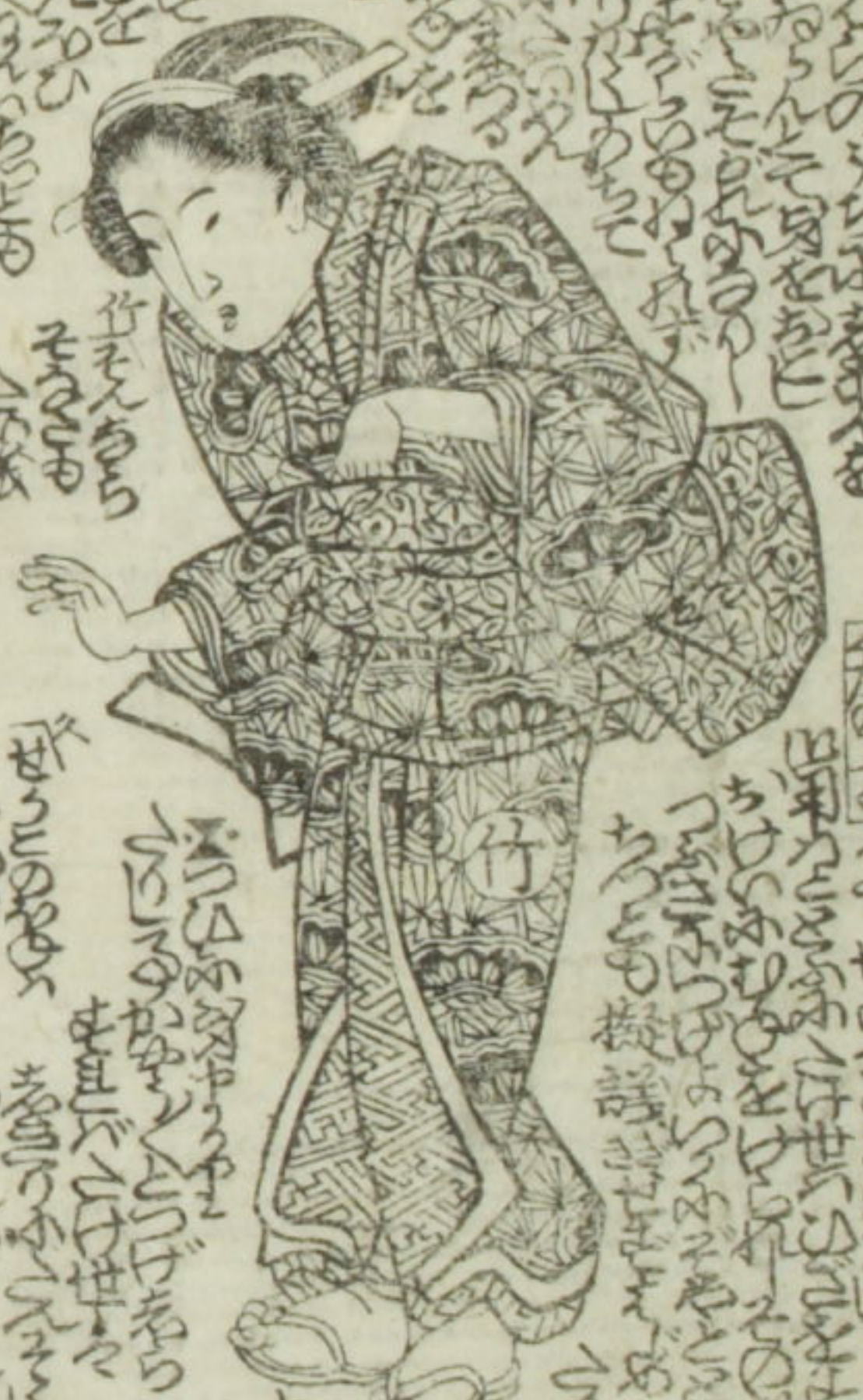


Vertical text on the left margin of the left page.

Vertical text on the left margin of the left page.

Handwritten text in a cursive script, likely a form of shorthand or a specific dialect, filling the right page of the manuscript.

Text block at the top of the right page, above the first illustration.



Text block at the bottom of the right page, below the second illustration.

Vertical text on the right margin of the right page.

Vertical text on the right margin of the right page.

Vertical columns of handwritten Japanese text, likely a play script, surrounding the illustration on the left page.



Vertical columns of handwritten Japanese text, likely a play script, surrounding the illustration on the right page.



馬琴作
國安画



筆畔
仙橋
淨書

御免江戸曆開板所 每年一月下旬頃より賣切あり

載陽帖全一冊 南山陣師書 四季和文章

新撰日本名所之繪 唐紙摺一枚 惠齋鐵形 銘真筆

新撰女古状揃園生竹 大紙 西品 中東 高井蘭山編撰

三國一夜談全五冊 画入讀本 曲阜馬琴作

即考百籤全一冊 以美備ハ一ノ邊帝親と傳て孔明劉雲を以て

隨筆 女同放言 初編二編共 七巻

右ノ三編三冊ハ若月の初め迄の物語を以て編みし事あり

