

女形はなめ



上編

馬喰町二丁目  
西村屋與八開場

特別  
A13  
2378  
382

文政十年  
孟春新編



遠  
2378  
88

# 牽牛織女願絲竹上編

## 曲亭馬琴

### 著 歌川國貞 畫

文政九年丙申  
春正月吉日  
取全六冊合局  
江戸馬喰町貳  
町目書林地本  
問屋永壽堂  
西村屋謹啓

壹



みかたなむしりく若く散る浪速津に挽くといふのほり親挽の護と受く  
 重箱の家富深なるまにけ挽のまゝ成知として知らざるを四とせよの教に  
 抱を敷く事多し重の研みらのまゝを末の舟にせよの松山小橋に通ひ流る  
 因果中舟に中宿の井もまて腰高のかくを疎ゆま海にかけ子四八の目と  
 焼物よのまゝの女房さすの得りた著ゆもかたは流るを流して本膳は善  
 こり先ひり浅黄本地耀の浅黄挽黒の瀬海きくく廓かひ盆のまの物  
 程いと世小唄の頼ひといふ二よりも銚子がえろ一極向本はく所勧善  
 二の膳三乃善悪邪正乃法身と分る献を所席料理の急務に賜り盆  
 目もゆめ戯作も名は天ひの附生名も只假名つれ思ひはき音訓交湯桶と  
 さひてもく心筆研みも丸の盆で三本の三冊合て六冊時体も丸の盆  
 たの有り肯く食言新きの振舞の外に酸くを雲時札の大胡を夢れ世の中寝  
 居るまの秋らははむ切溜のわん附は善成聲をく挽の草紙と云津  
 頼もなるにえん

文政十丁亥孟春新版 馬琴戲述

糸十

壹

まんじり  
 女はつれかど  
 泣きつれかど  
 泣きつれかど

信天公羽



家具町の  
 膳介

膳介の妻  
 平嫁

ひのき  
 何れん  
 愚山人



浪速の  
 枕久

休  
 休  
 休



傾城  
 松山



鞍轡  
駱大夫

人か  
かゝるや海速の  
うらめしき  
たしらの  
まみし乃松

笠置屋隠居

椀屋の老管  
血七



椀屋玖右衛門が妻  
高塚

あゝあゝの果  
奈子波乃  
泣むり解  
あゝのほ  
やまぐ  
閑齋

椀屋  
玖右  
衛門  
白  
著



春の巻  
おのれんは  
心でもおの  
たのめらぬ  
著作堂

奴隷  
助

穴鞍  
駱九郎



あつめあつめと教む  
めまも小判の  
ありとさげや  
狂齋

椀屋の手代  
宇留四郎

浮金  
盆太



五月の初日  
 わりきりておぼろの月  
 月夜にけしきさかしく  
 五更のつらき夜本は  
 徳和坊とておぼろの月  
 りたりておぼろの月  
 りたりておぼろの月  
 りたりておぼろの月  
 りたりておぼろの月  
 りたりておぼろの月



五月の初日  
 わりきりておぼろの月  
 月夜にけしきさかしく  
 五更のつらき夜本は  
 徳和坊とておぼろの月  
 りたりておぼろの月  
 りたりておぼろの月  
 りたりておぼろの月  
 りたりておぼろの月  
 りたりておぼろの月

Handwritten text in a cursive script, likely Japanese, surrounding the illustration on the right page. The text is arranged in vertical columns, with some lines written horizontally above and below the figures. It appears to be a commentary or a narrative related to the scene depicted.



Handwritten text in a cursive script, likely Japanese, surrounding the illustration on the left page. The text is arranged in vertical columns, with some lines written horizontally above and below the figures. It appears to be a commentary or a narrative related to the scene depicted.



Handwritten text in vertical columns, likely a commentary or dialogue, surrounding the illustration. The text is written in a cursive style, typical of Edo-period Japanese manuscripts.



Handwritten text in vertical columns, likely a commentary or dialogue, surrounding the illustration. The text is written in a cursive style, typical of Edo-period Japanese manuscripts.





Handwritten text in a cursive script, likely a form of shorthand or a specific dialect. The text is arranged in vertical columns, with some sections interspersed with small diagrams or sketches. At the top left, there is a small illustration of a person sitting at a table. In the middle, there are several rectangular boxes or containers. At the bottom, there is a large, detailed drawing of a human figure, possibly a deity or a person of significance, with a halo or aura around their head. The text appears to be a detailed description or a set of instructions related to these illustrations.

Handwritten text in a cursive script, similar to the left page. The text is arranged in vertical columns. At the top, there is a small illustration of a person sitting at a table, similar to the one on the left page. Below this, there is a large, detailed drawing of a human figure, possibly a deity or a person of significance, with a halo or aura around their head. The text appears to be a detailed description or a set of instructions related to these illustrations.

Handwritten text in a cursive script, likely a historical account or a list of events, located at the top of the right page.



Handwritten text in a cursive script, continuing the narrative or list from the top of the page, located at the bottom of the right page.

Handwritten text in a cursive script, likely a historical account or a list of events, located at the top of the left page.



Handwritten text in a cursive script, continuing the narrative or list from the top of the page, located at the bottom of the left page.

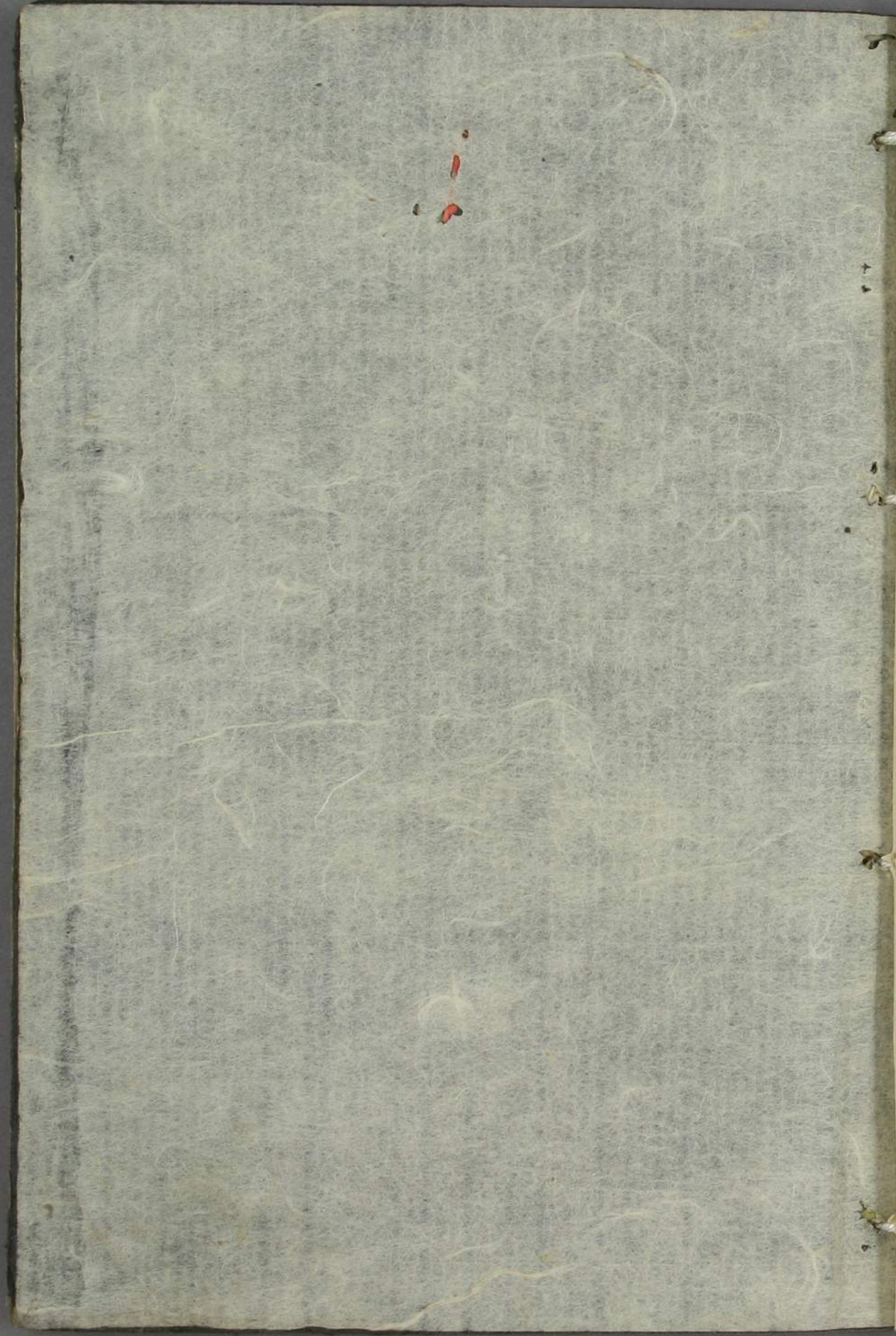
Handwritten text in a cursive style, likely a play script or commentary, surrounding the illustration on the right page.



Handwritten text in a cursive style, likely a play script or commentary, surrounding the illustration on the left page.



Handwritten text in vertical columns, likely a play script or commentary, surrounding the illustration. The text is written in a cursive style (kuzushiji) and includes various characters and symbols.



國貞画



福の  
心乃  
中編



村永壽堂版

曲亭馬琴戲編

全六弓中編

牽牛織女

願  
竹  
絲

五渡亭國貞画 西村屋新版



天竺の僧侶の物語...  
 その僧侶は...  
 天竺の僧侶の物語...  
 その僧侶は...  
 天竺の僧侶の物語...  
 その僧侶は...



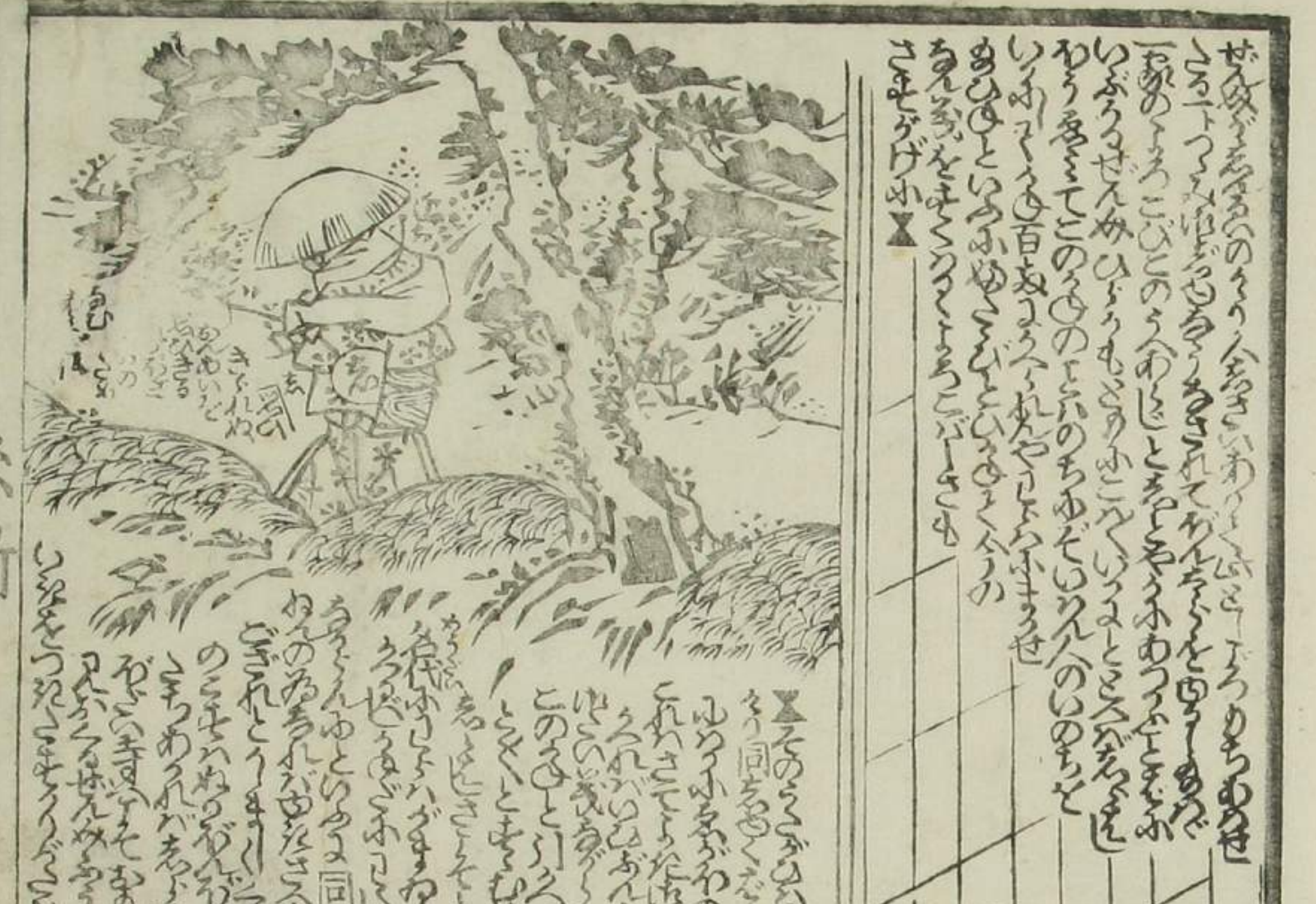
天竺の僧侶の物語...  
 その僧侶は...  
 天竺の僧侶の物語...  
 その僧侶は...  
 天竺の僧侶の物語...  
 その僧侶は...



Handwritten text in vertical columns, likely a play script or commentary, surrounding the illustration on the right page.



Handwritten text in vertical columns, likely a play script or commentary, surrounding the illustration on the left page.







Handwritten text in a cursive script, likely a commentary or description of the scene. The text is arranged in vertical columns, starting from the top left and moving towards the right.

Handwritten text in a cursive script, continuing the commentary or description. The text is arranged in vertical columns, starting from the top right and moving towards the bottom.



Handwritten text in a cursive script, likely a commentary or description of the scene. The text is arranged in vertical columns, starting from the top left and moving towards the right.

Handwritten text in a cursive script, continuing the commentary or description. The text is arranged in vertical columns, starting from the top right and moving towards the bottom.

Handwritten text in vertical columns, likely a commentary or a list of items, surrounding the illustration. The text is written in a cursive style.



Handwritten text in vertical columns, likely a commentary or a list of items, surrounding the illustration. The text is written in a cursive style.



Vertical text on the left margin of the left page.

Vertical text on the left margin of the left page.

Handwritten text in vertical columns, likely a preface or introductory text.



Handwritten text in vertical columns, continuing the narrative or commentary.



Vertical text on the left margin.

Vertical text on the left margin.

Main body of handwritten text in vertical columns, including a large section on the right side.



馬琴作 (Utagawa Kōchō)





Vertical text columns on the left side of the illustration, likely providing a narrative or commentary on the scene.

Vertical text columns on the right side of the illustration, continuing the narrative or commentary.



Vertical text columns on the left side of the illustration, likely providing a narrative or commentary on the scene.

Vertical text columns on the right side of the illustration, continuing the narrative or commentary.

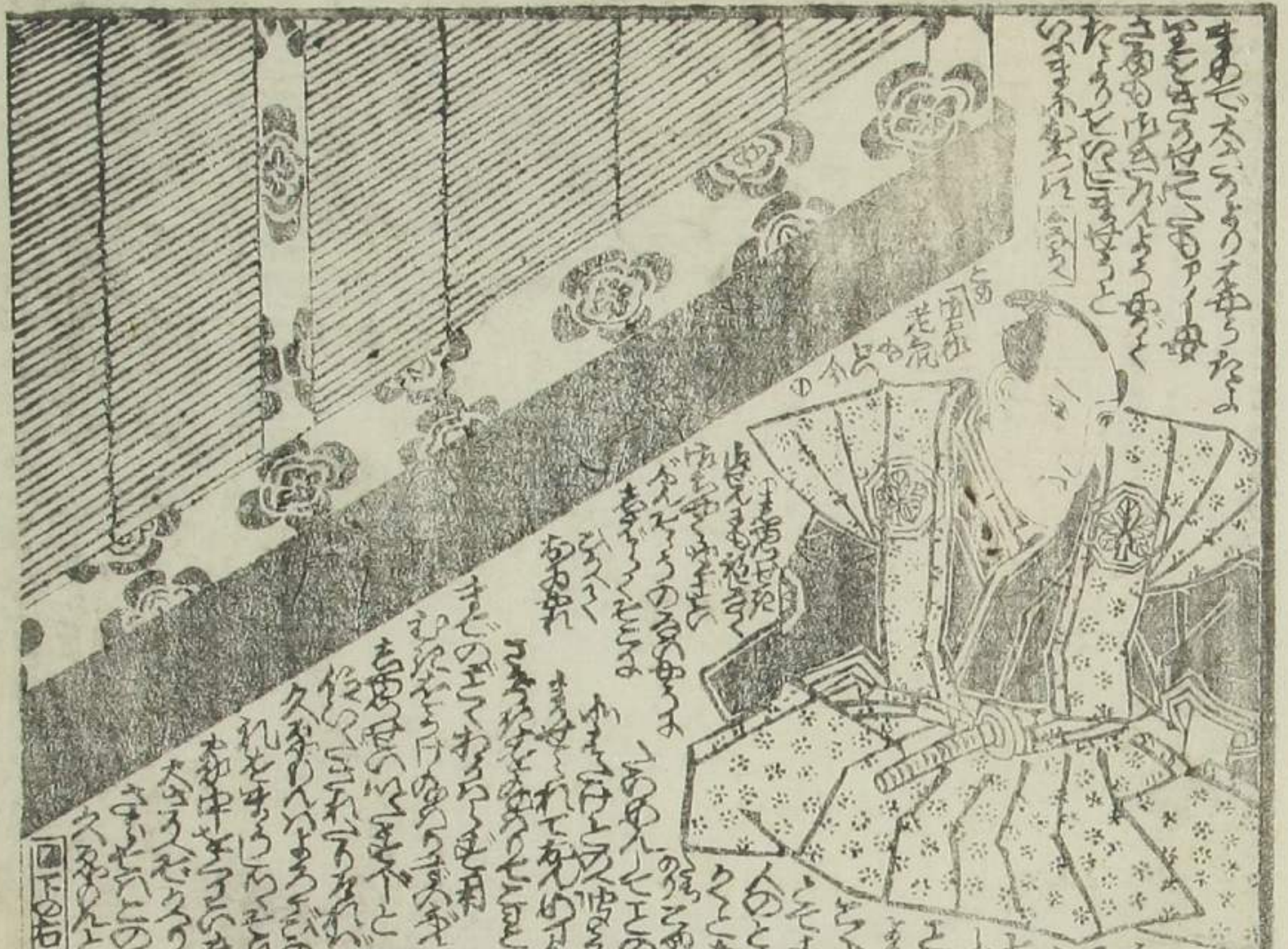


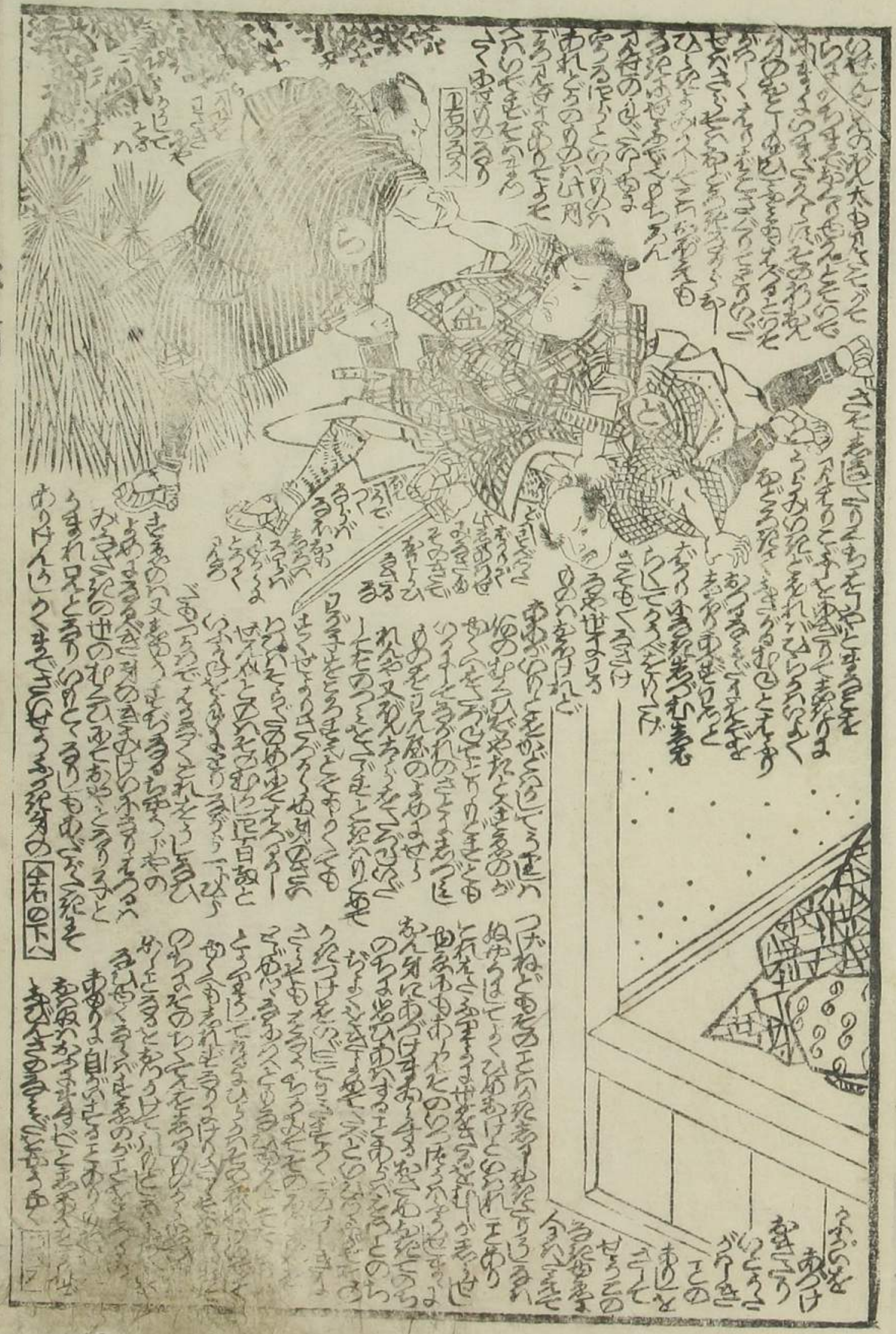
糸竹

Handwritten text in a vertical column on the right side of the page, likely a commentary or a list of items. The text is dense and covers most of the right margin.



Handwritten text in a vertical column on the left side of the page, continuing the commentary or list from the right page. The text is dense and covers most of the left margin.





Handwritten Japanese text in vertical columns, located above the illustration. The text is dense and appears to be a commentary or a list of items related to the scene.

Handwritten Japanese text in vertical columns, located below the illustration. This section continues the commentary or list from the top section.

Handwritten Japanese text in vertical columns, located at the bottom of the page. This section concludes the commentary or list.



Handwritten Japanese text in vertical columns, located above the illustration. The text is dense and appears to be a commentary or a list of items related to the scene.

Handwritten Japanese text in vertical columns, located below the illustration. This section continues the commentary or list from the top section.

Handwritten Japanese text in vertical columns, located below the illustration. This section continues the commentary or list from the top section.

Handwritten Japanese text in vertical columns, located at the bottom of the page. This section concludes the commentary or list.

Handwritten Japanese text, possibly a page number or a section title, located on the right edge of the page.

此竹之類也其葉如松葉而厚其節如竹節而密其根如竹根而深其花如竹花而白其果如竹果而黑其味如竹味而甜其氣如竹氣而清香其性如竹性而剛柔其用如竹用而廣遠其功如竹功而神速其德如竹德而高尚其節如竹節而正直其心如竹心而虛靜其志如竹志而堅固其行如竹行而謙遜其言如竹言而簡潔其貌如竹貌而樸素其聲如竹聲而淅淅其色如竹色而蒼翠其質如竹質而堅韌其理如竹理而通達其氣如竹氣而流通其味如竹味而甘香其性如竹性而剛柔其用如竹用而廣遠其功如竹功而神速其德如竹德而高尚其節如竹節而正直其心如竹心而虛靜其志如竹志而堅固其行如竹行而謙遜其言如竹言而簡潔其貌如竹貌而樸素其聲如竹聲而淅淅其色如竹色而蒼翠其質如竹質而堅韌其理如竹理而通達其氣如竹氣而流通其味如竹味而甘香



此竹之類也其葉如松葉而厚其節如竹節而密其根如竹根而深其花如竹花而白其果如竹果而黑其味如竹味而甜其氣如竹氣而清香其性如竹性而剛柔其用如竹用而廣遠其功如竹功而神速其德如竹德而高尚其節如竹節而正直其心如竹心而虛靜其志如竹志而堅固其行如竹行而謙遜其言如竹言而簡潔其貌如竹貌而樸素其聲如竹聲而淅淅其色如竹色而蒼翠其質如竹質而堅韌其理如竹理而通達其氣如竹氣而流通其味如竹味而甘香其性如竹性而剛柔其用如竹用而廣遠其功如竹功而神速其德如竹德而高尚其節如竹節而正直其心如竹心而虛靜其志如竹志而堅固其行如竹行而謙遜其言如竹言而簡潔其貌如竹貌而樸素其聲如竹聲而淅淅其色如竹色而蒼翠其質如竹質而堅韌其理如竹理而通達其氣如竹氣而流通其味如竹味而甘香



國貞画



下編  
以  
休

馬喰町永壽堂  
西與

全六合身



糸竹

十一

願

福のひの

糸竹

52

55



編 永壽  
堂 版



久遠の昔に...

松

中世

右の正倉院の...

...

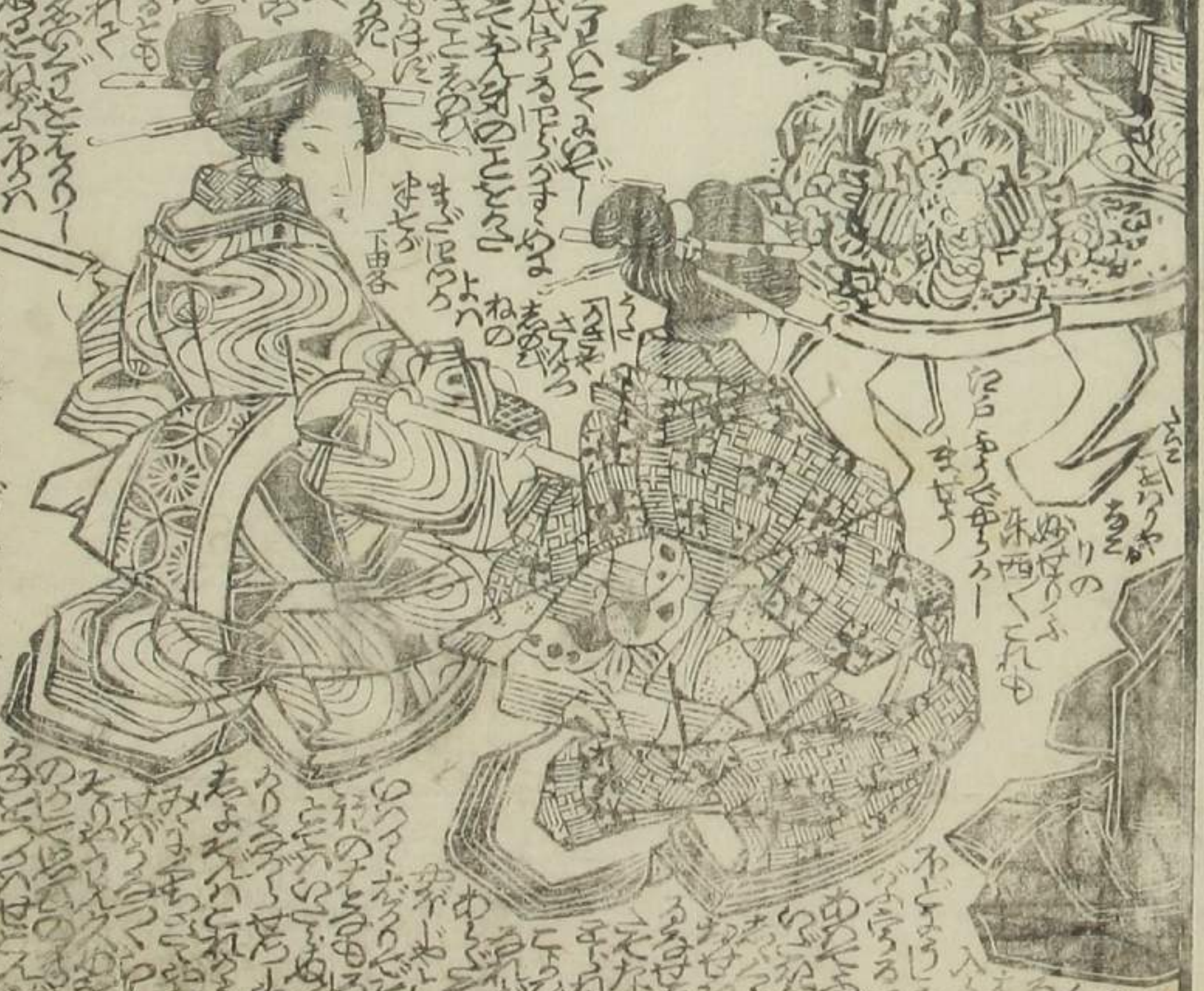


久遠の昔に...

...



Handwritten text in a cursive script, likely Japanese, surrounding the illustration on the left page. The text is arranged in vertical columns, with some lines crossing the illustration's border.



Handwritten text located to the left of the illustration on the left page.

Handwritten text located below the illustration on the left page.

Handwritten text in a cursive script, likely Japanese, surrounding the illustration on the right page. The text is arranged in vertical columns, with some lines crossing the illustration's border.



Handwritten text in a vertical column on the right side of the page, likely a list of items or descriptions. The text is dense and written in a cursive style.

Handwritten text at the top left of the page, possibly a title or introductory text.



Handwritten text below the small object illustration, likely a label or description.

Handwritten text at the bottom left of the page, possibly a title or introductory text.



Handwritten text in a vertical column on the right side of the page, likely a list of items or descriptions. The text is dense and written in a cursive style.

Handwritten text at the top left of the page, possibly a title or introductory text.



Handwritten text below the circular object illustration, likely a label or description.

Handwritten text at the bottom left of the page, possibly a title or introductory text.



Handwritten text on the left side of the page, possibly a title or introductory text.

Handwritten text at the bottom left of the page, possibly a title or introductory text.



Handwritten text in a vertical column on the left side of the page, written in a cursive style.

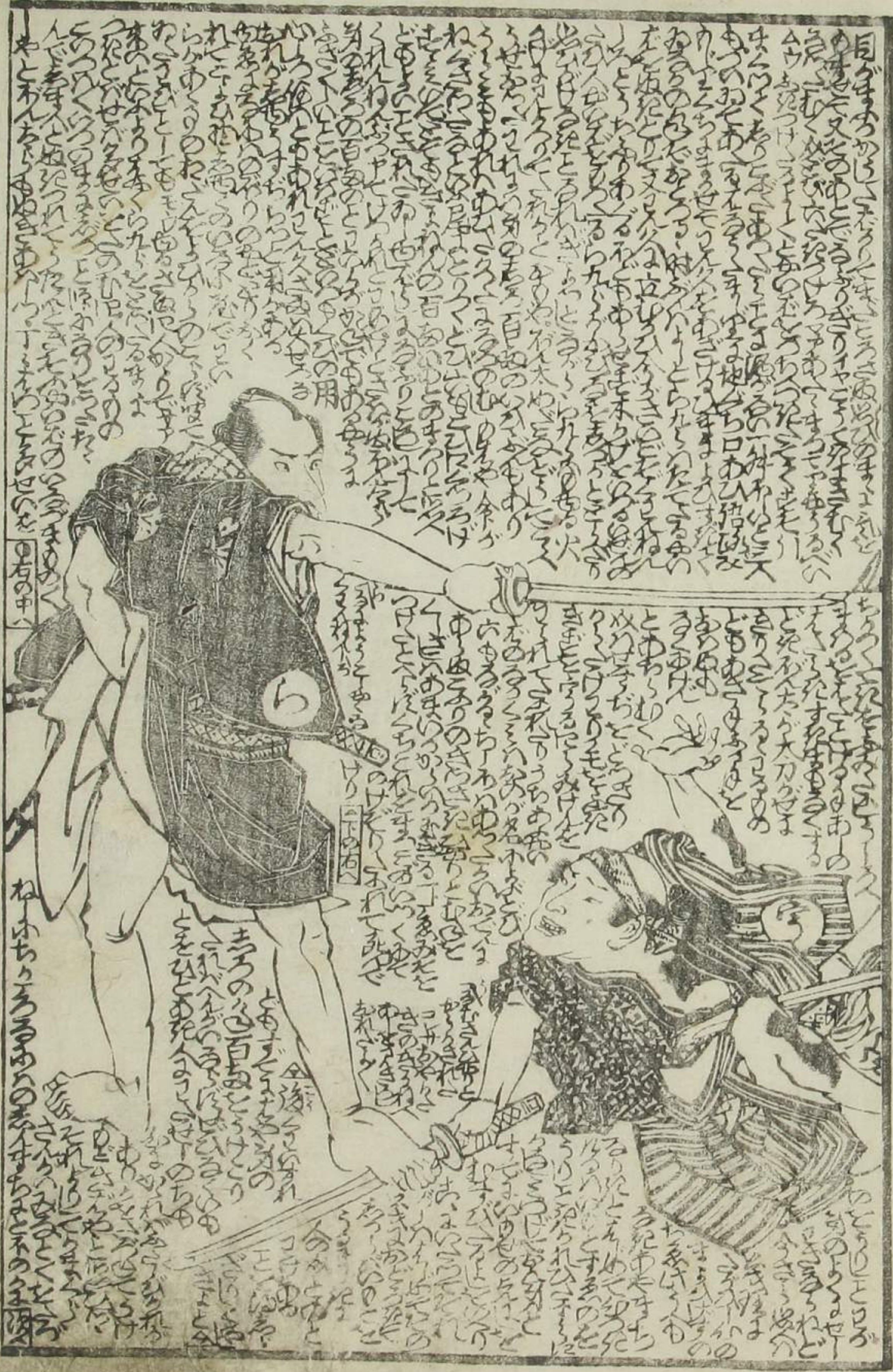


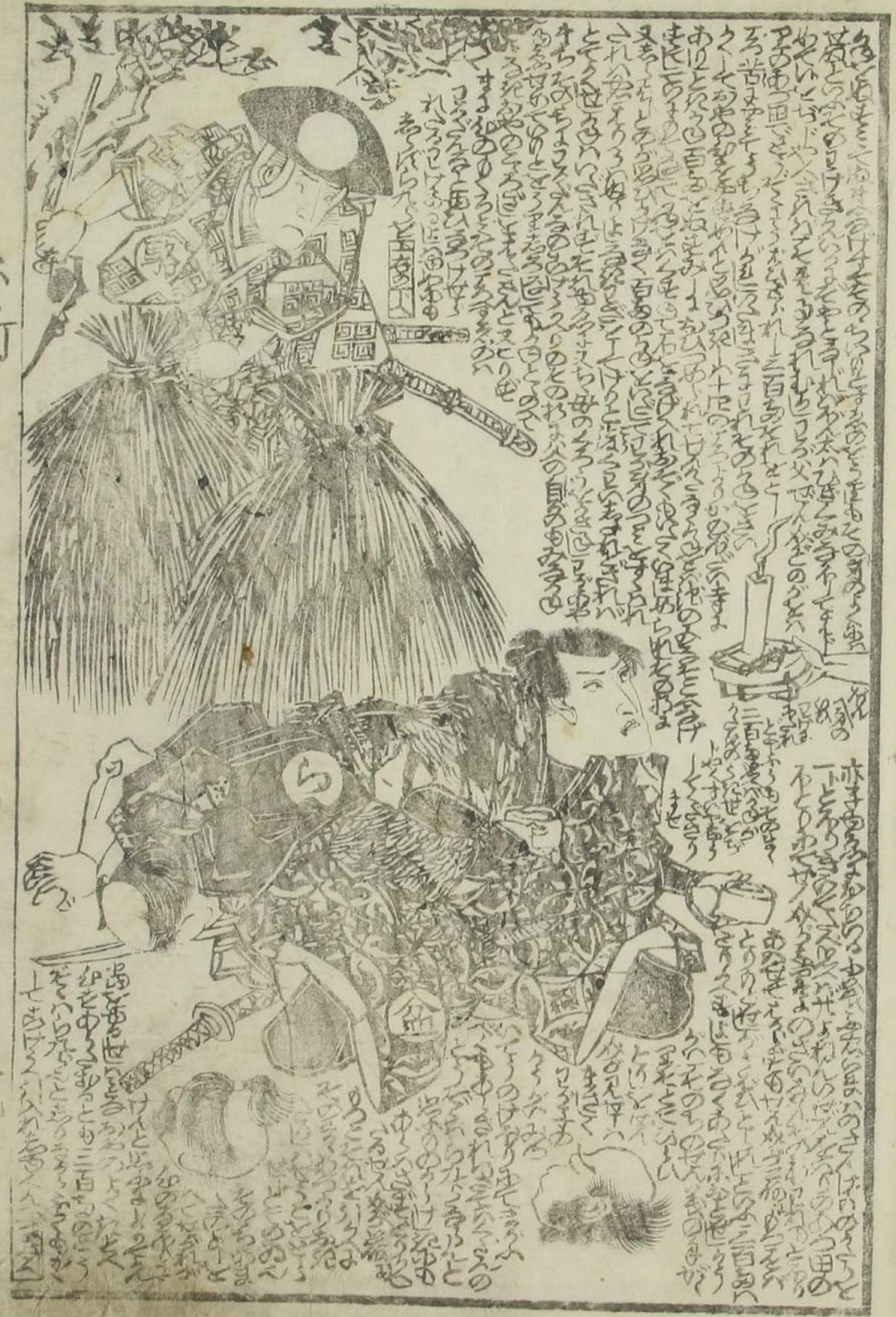
Handwritten text in a vertical column on the right side of the page, written in a cursive style.













三十一

三十一



**牽牛織女願系竹** 曲亭馬琴作 全六冊  
 五渡亭國貞画

**代夜待白女辻占** 全六冊  
 歌川國貞画

**繫馬七勇婦傳** 全六冊  
 南仙笑楚滿人作

**正本製九編** 柳亭種彦作 全六冊  
 五渡亭國貞画

**花角力戀乃百草** 志満山人作 全六冊  
 哥川國信画

**手鞠唄幼稚繪説** 全六冊  
 楚満人作

**笑話** 全八冊  
 江戸馬喰町二丁目角 永壽寺堂

**團扇地紙錦繪** 全六冊  
 西村屋與八

**譬諭州心結種本** 全六冊  
 春齋英笑画

**今昔虛實録** 全六冊  
 歌川豊國画

家傳神鳥... 精製奇應... 直方熊胆黒丸... 婦人秘妙... 本家神田... 弘明... 取...



國貞画

馬琴作

後編筆谷金川彫工 鈴木栄次郎

