





11





おれは...
うらな...
おれは...
うらな...

おれは...
うらな...
おれは...
うらな...



おれは...
うらな...
おれは...
うらな...



おれは...
うらな...
おれは...
うらな...

おれは...

おれは...





Handwritten Japanese text in vertical columns, likely a commentary or a list of items related to the illustration. The text is written in a cursive style.



Handwritten Japanese text in vertical columns, likely a commentary or a list of items related to the illustration. The text is written in a cursive style.

Small vertical text on the right edge of the page, possibly a page number or a reference.

Small vertical text on the right edge of the page, possibly a page number or a reference.



いふまじらふが
まのちとくし
さうめんちんあ
あまのふらふら
こも井のふらふら
のりものさうさう
ちんちんちんちん
くわいめいそめい
まのりちんちんちん

あまのふらふら
こも井のふらふら
のりものさうさう
ちんちんちんちん

あまのふらふら
こも井のふらふら
のりものさうさう
ちんちんちんちん



あまのふらふら
こも井のふらふら
のりものさうさう
ちんちんちんちん

あまのふらふら
こも井のふらふら
のりものさうさう
ちんちんちんちん

國貞画立川正馬馬校



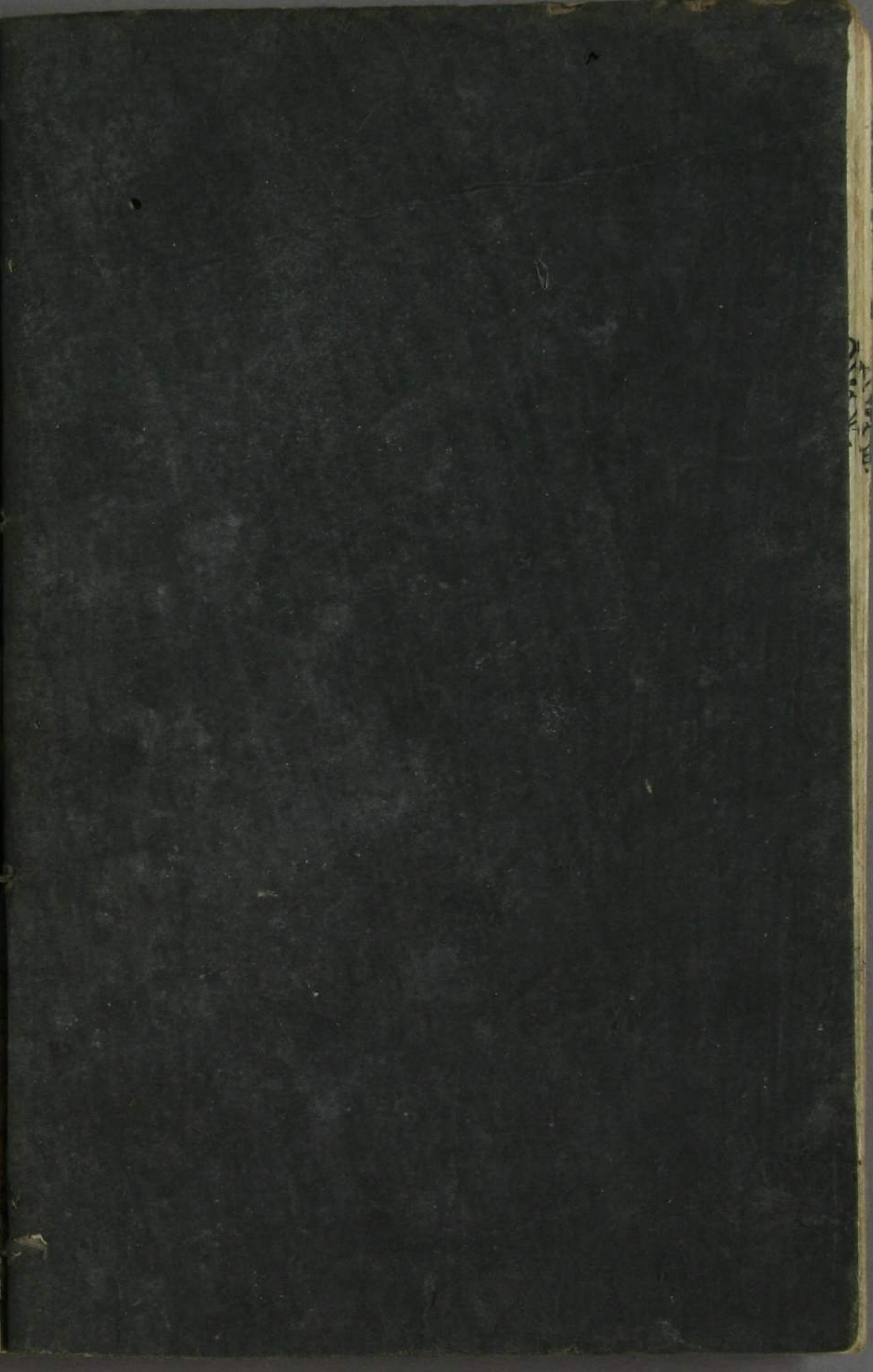
精製白妙

一包包代三十二匁

此の志ろくくはいつはと趣の思き方めての男女ふかき
 らも男もまひ又いふろふ入とさうらもわつらふまじふぬ
 ちろの舟へがしつる入し月れがきとるるのちい
 老得を白妙のどくふ十きあをバこあうち一幸あても
 ちやけののをせけらぬを付せてきまひ小国さの神妙
 石削のちるあしが月して功社をわげぬ

本家綱合所

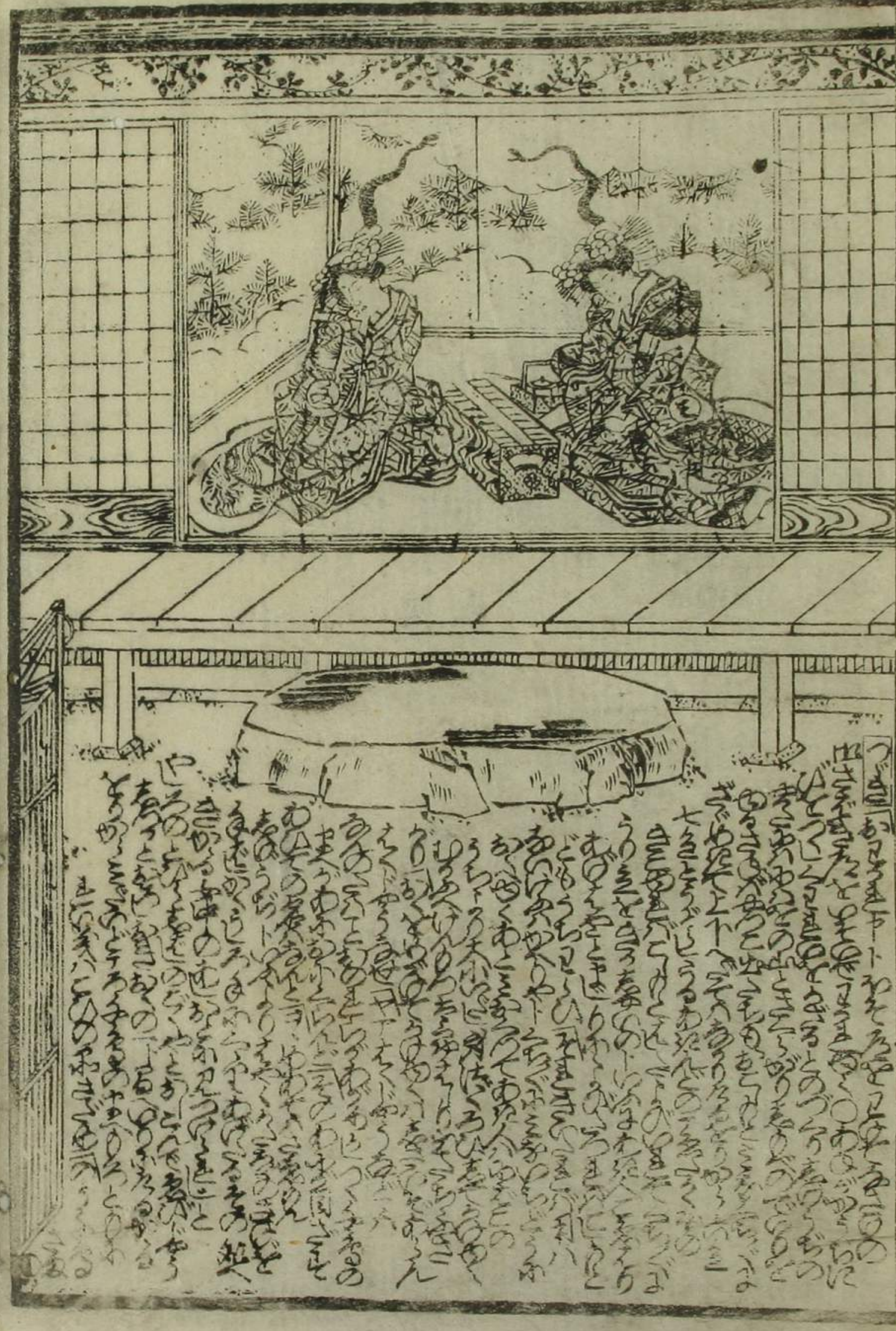
書物屋 北林堂 西宮 弥生橋





Handwritten Japanese text in the upper left corner, including the characters '下' (shimo) and '上' (ue).

Handwritten Japanese text in the lower left corner, including the characters '下' (shimo) and '上' (ue).



Handwritten Japanese text in the lower right corner, including the characters '下' (shimo) and '上' (ue).



Handwritten text in a cursive script, likely a play script or commentary, surrounding the illustration. The text is arranged in vertical columns, with some lines following the contours of the figures. The script is dense and fills the space around the central image.



Handwritten text in a cursive script, likely a play script or commentary, surrounding the illustration. The text is arranged in vertical columns, with some lines following the contours of the figure. The script is dense and fills the space around the central image.



Page 1

14



Page 2

15





Handwritten text in vertical columns, likely a commentary or a list of items related to the illustration. The text is written in a cursive style (sōsho).

Additional handwritten text at the bottom of the page, continuing the commentary or list.



Handwritten text in vertical columns, providing commentary or a list for the illustration. The text is written in a cursive style.

Additional handwritten text at the bottom of the page, continuing the commentary or list.





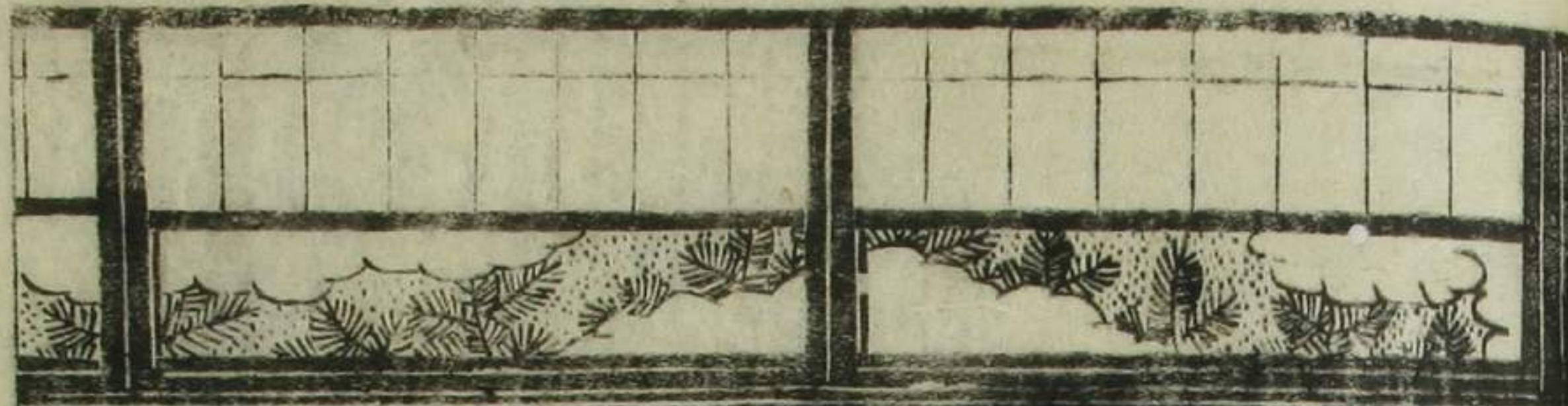
Handwritten Japanese text in vertical columns, located above and to the left of the man's illustration.

Handwritten Japanese text in vertical columns, located below and to the right of the man's illustration.



Handwritten Japanese text in vertical columns, located above the woman's illustration.

Handwritten Japanese text in vertical columns, located below and to the right of the woman's illustration.



Vertical Japanese text on the left side of the page, likely a stage direction or dialogue.

Vertical Japanese text at the bottom of the left page, continuing the scene's description.



Vertical Japanese text at the bottom of the right page, providing further context for the scene.

Vertical Japanese text on the right edge of the page, possibly a page number or title.



精製 白妙

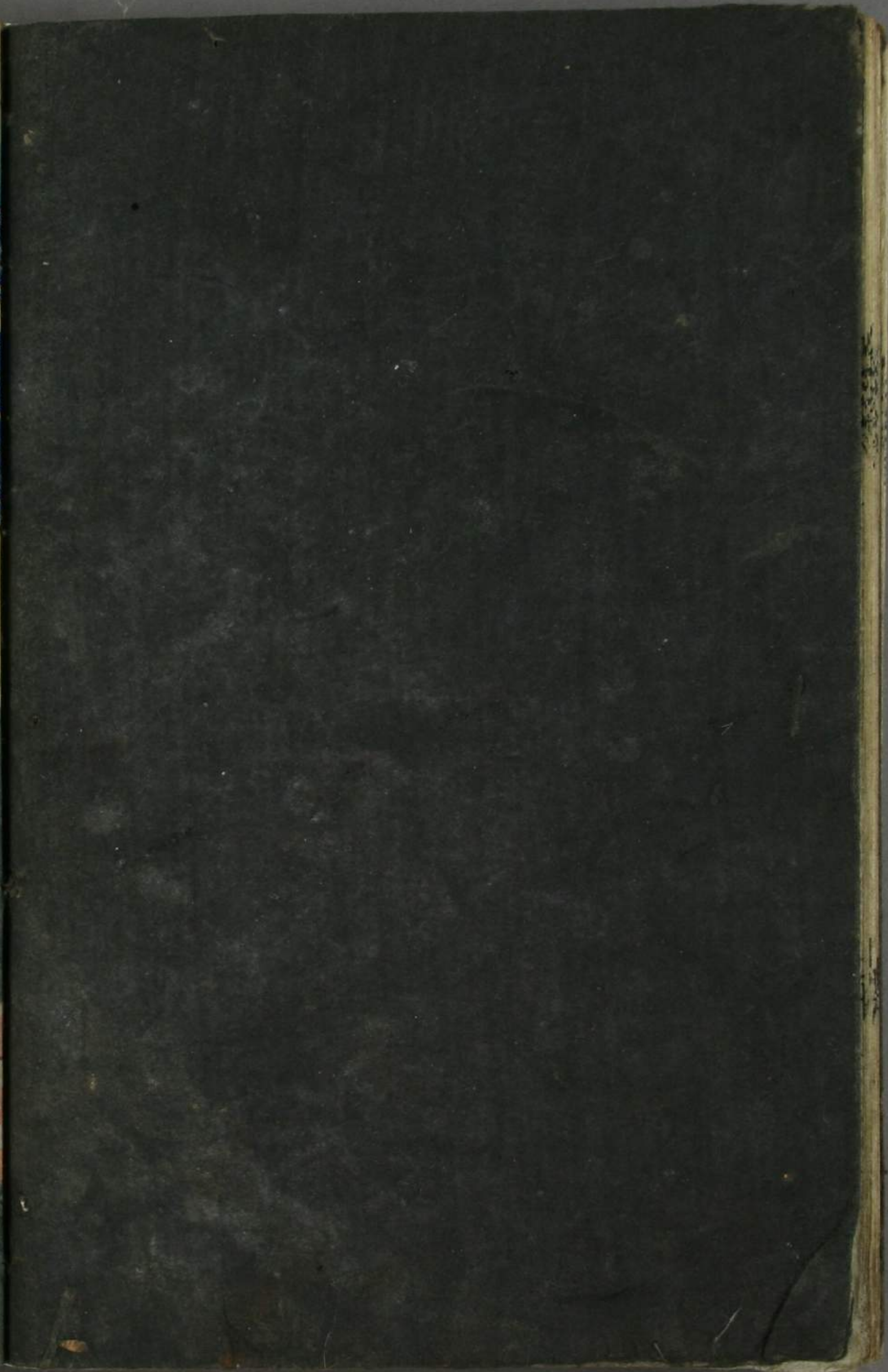
一包代三十二匁

此の... 白妙の... 精製... 包代三十二匁... 男女小... 女之助... 女之助... 女之助...

本家調合所

北林堂西宮弥生坊

立川為馬校
歌川國貞画





のめやたらん
 下卷
 字を
 馬校
 閑上見画
 葛吉板
 卯の妻





110

111



112

113



Vertical text on the left side of the illustration, likely a chapter heading or descriptive text.

Vertical text on the left side of the illustration, likely a chapter heading or descriptive text.

Vertical text on the right side of the illustration, likely a chapter heading or descriptive text.



賽銭宮 (Saisen-kyo)

Vertical text on the right side of the illustration, likely a chapter heading or descriptive text.

Vertical text on the right side of the illustration, likely a chapter heading or descriptive text.



Handwritten Japanese text in vertical columns, likely a play script or commentary. The text is written in a cursive style and is interspersed with the illustration. It appears to be a dialogue or a narrative description of the scene.

88

111



Handwritten Japanese text in vertical columns, likely a play script or commentary. The text is written in a cursive style and is interspersed with the illustration. It appears to be a dialogue or a narrative description of the scene.

89

112





たつた

上

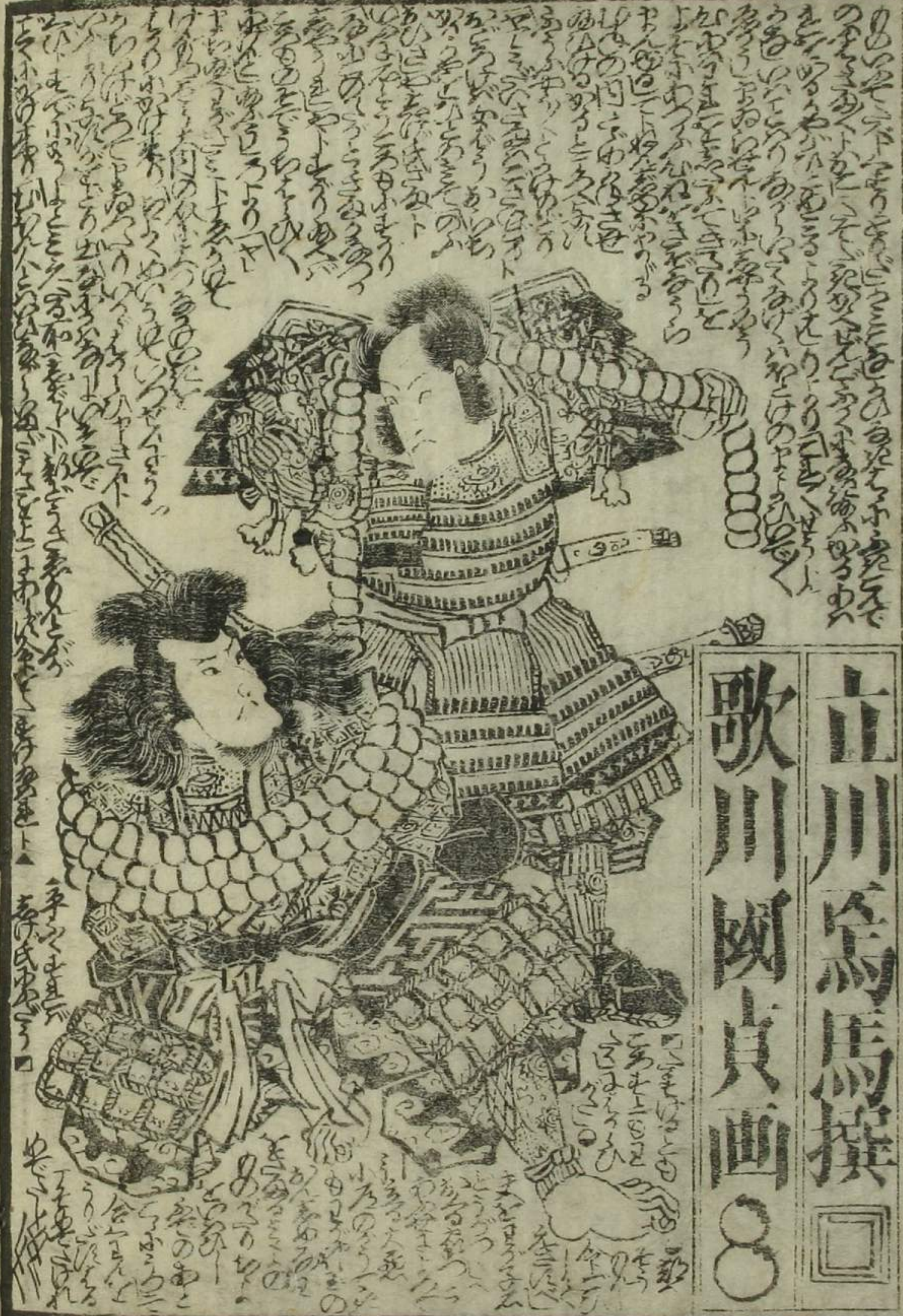


たつた

九八



立川為馬撰
歌川國貞画



富士裾の蝶衛 全四册 柳亭種彦作 溪齋英泉画

本朝合影樓 全六册 柳亭種彦校 厚田仙果作 歌川國貞画

二十四孝稚教訓 全四册 松亭金水作 貞齋泉晁画

荊釐竹玳紫の寫繪 全六册 立川為馬校 歌川國貞画

美艷仙女香 色四十八枚 江戸系橋本屋吉右衛門同角 坂本氏装 黒油美玄香 色四十八枚 右吉本おる

地木錦繪問屋 京橋南傳馬町一丁目 紅英堂 葛屋吉右衛門藏版

