

曲亭馬琴著

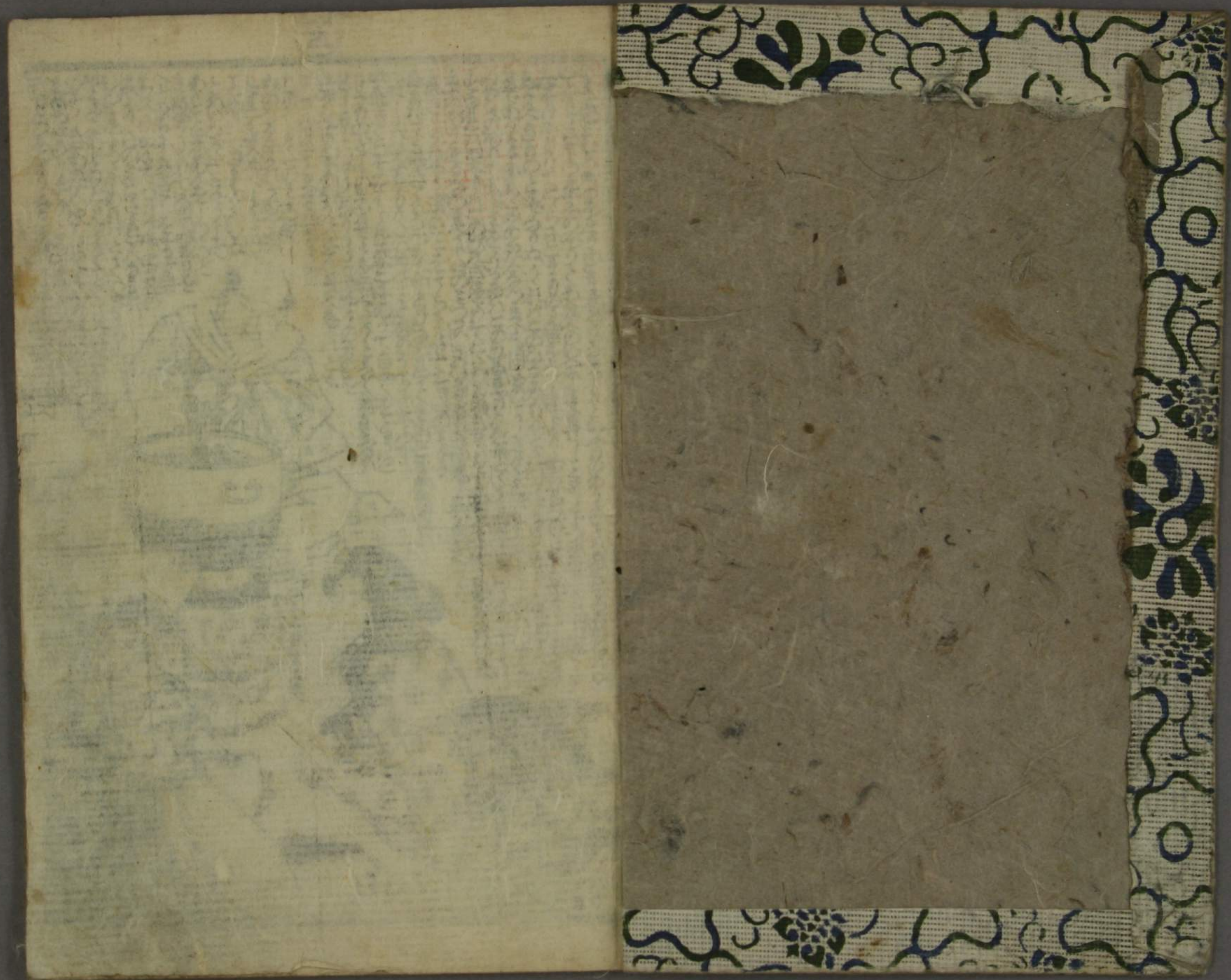
傾城水滸

傳第初編

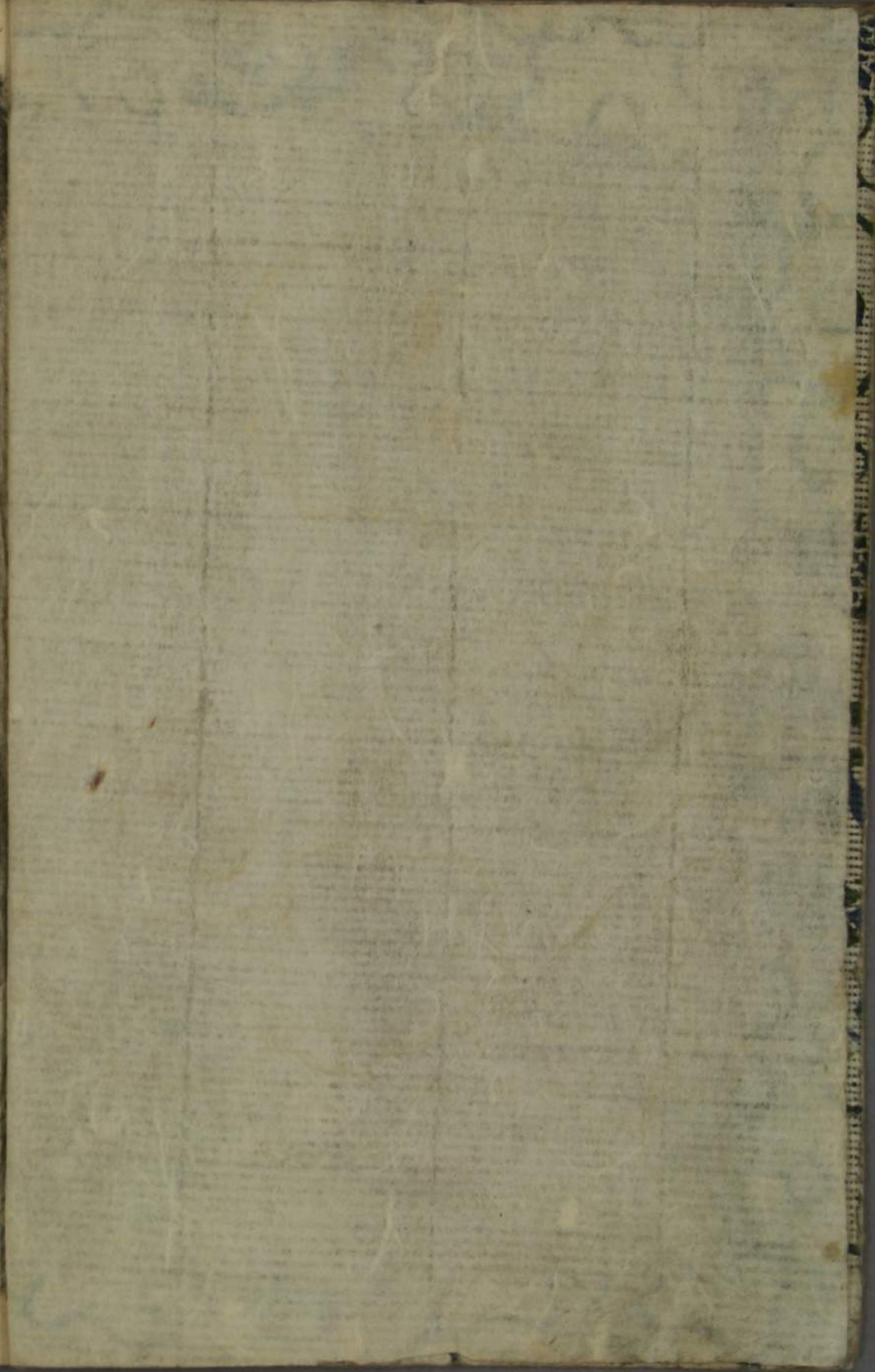
歌川國安画
上帙卷之下

13
1964
2





The illustration depicts a scene with several figures in traditional attire. A central figure is seated and appears to be engaged in a task involving a large, round, decorated vessel or pot. To the left, another figure is seated, looking towards the central activity. To the right, a third figure is seated, also observing. The background shows architectural elements, possibly a building or a courtyard. The entire scene is surrounded by dense handwritten text in a cursive script, likely a form of shorthand or a specific dialect. The text is arranged in columns, with some lines written vertically and others horizontally. The overall style is characteristic of a manuscript or a historical record.





左の上手七と七の...
この日...
...

右の上手七と七の...
この日...
...

この日...
...



Vertical text on the far left edge of the page.





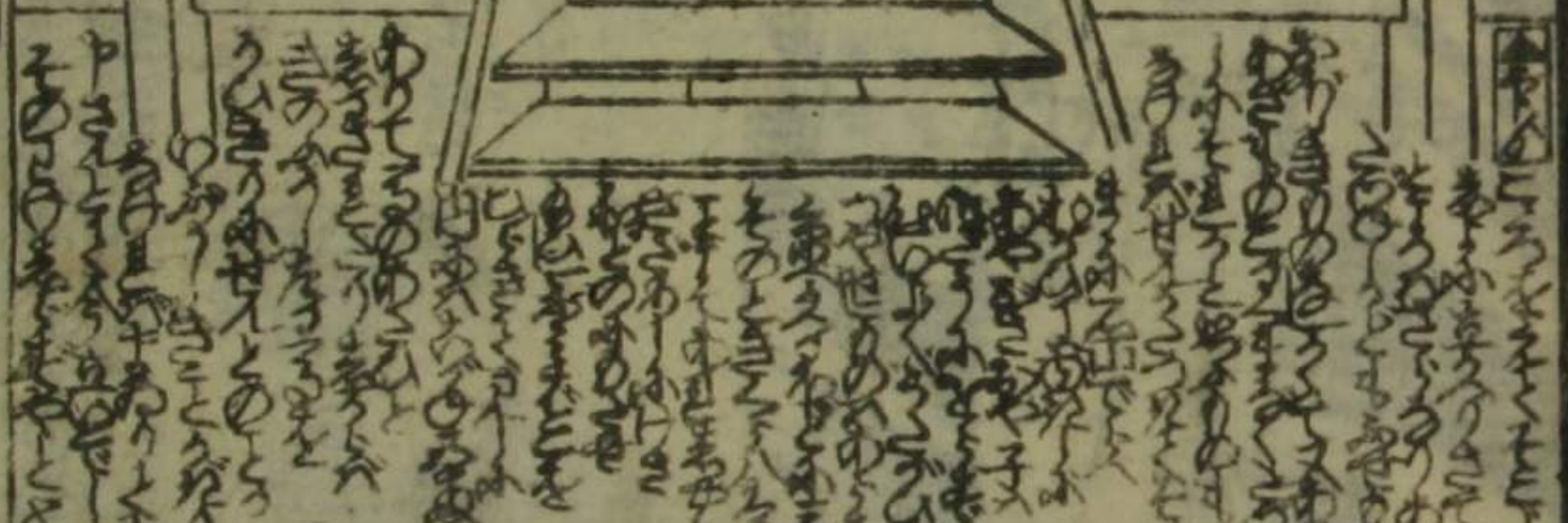
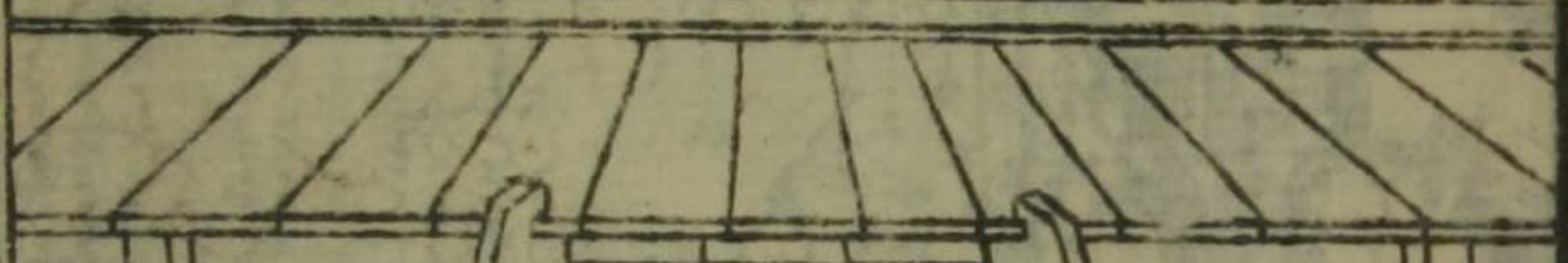
Handwritten Japanese text at the top left of the page, including the characters '尾の目' (Oinomado).

Handwritten Japanese text at the top right of the page.

Handwritten Japanese text at the bottom left of the page.

Handwritten Japanese text at the bottom right of the page.





Handwritten text in a cursive script, likely Japanese, surrounding the top illustration.

Handwritten text in a cursive script, likely Japanese, surrounding the middle illustration.

Handwritten text in a cursive script, likely Japanese, surrounding the bottom-left illustration.

Handwritten text in a cursive script, likely Japanese, surrounding the bottom-right illustration.

Handwritten text in a cursive script, likely Japanese, at the top of the right page.



Handwritten text in a cursive script, likely Japanese, surrounding the bottom illustration on the right page.

Handwritten text in vertical columns, likely a narrative or dialogue, surrounding the illustration on the left page.



Handwritten text in vertical columns, likely a narrative or dialogue, surrounding the illustration on the right page.







川中... 御免江戸... 載陽帖... 日本名所之繪... 新撰古状揃園生竹... 還魂紙料... 田喜喜編輯... 葛葉翁... 右才三編... 初編... 二編... 三編...



豊国画

馬琴今作

御免江戸曆開板所 每年十月一日... 載陽帖 南山禅師書東海道法早算用道中記一校撮 四季和文章右指木曾海道 唐紙摺一枚 蕙齋鐵形紹真筆 日本名所之繪 新撰古状揃園生竹 大木兩品出来 高井蘭山編撰 還魂紙料 柳亭種彦隨筆 古画入二册 田喜喜編輯 葛葉翁 右才三編三冊 初編 二編 三編

川中... 御免江戸... 載陽帖... 日本名所之繪... 新撰古状揃園生竹... 還魂紙料... 田喜喜編輯... 葛葉翁... 右才三編... 初編... 二編... 三編...

