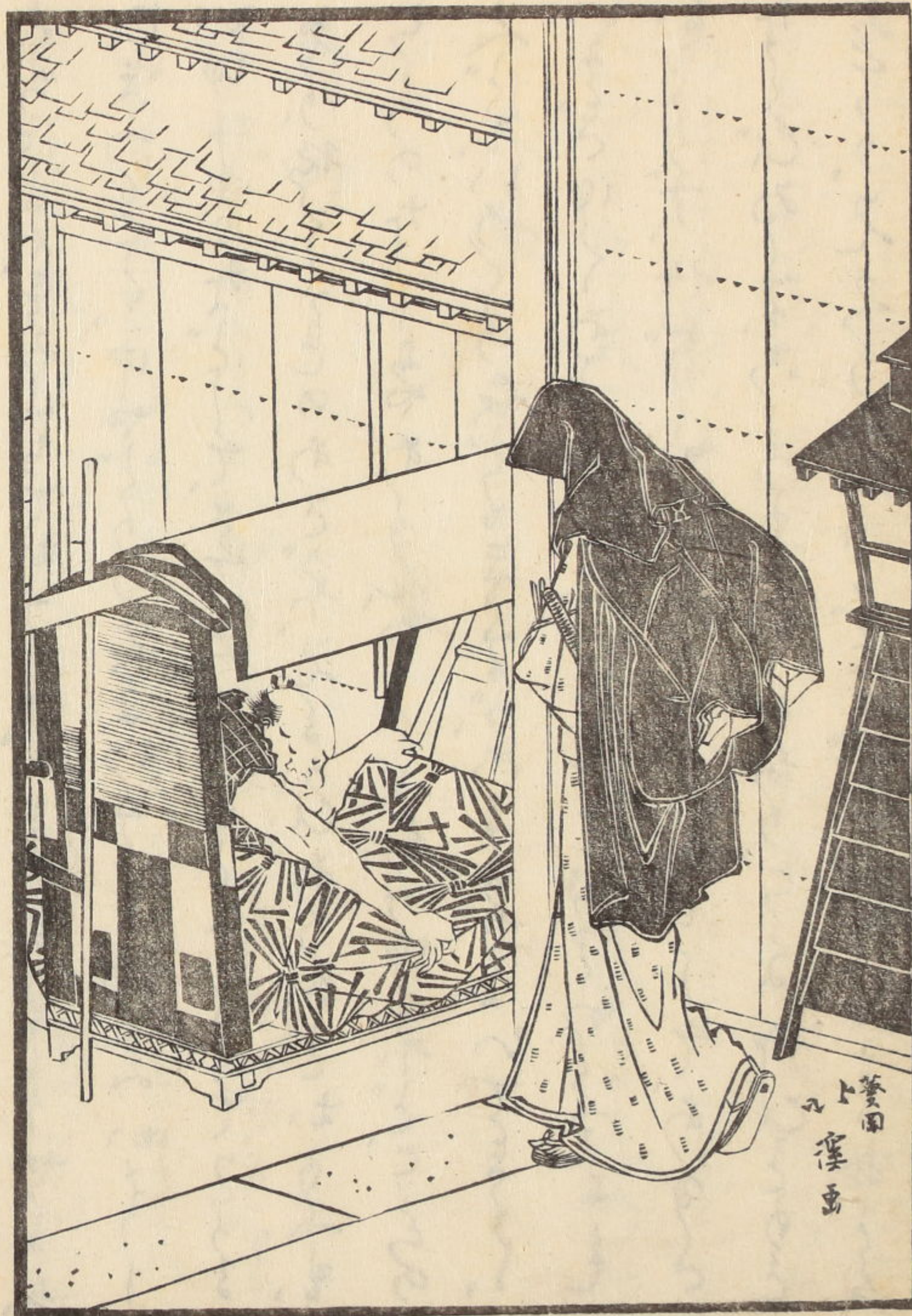




坊屋十三時
全

1333
^ 13



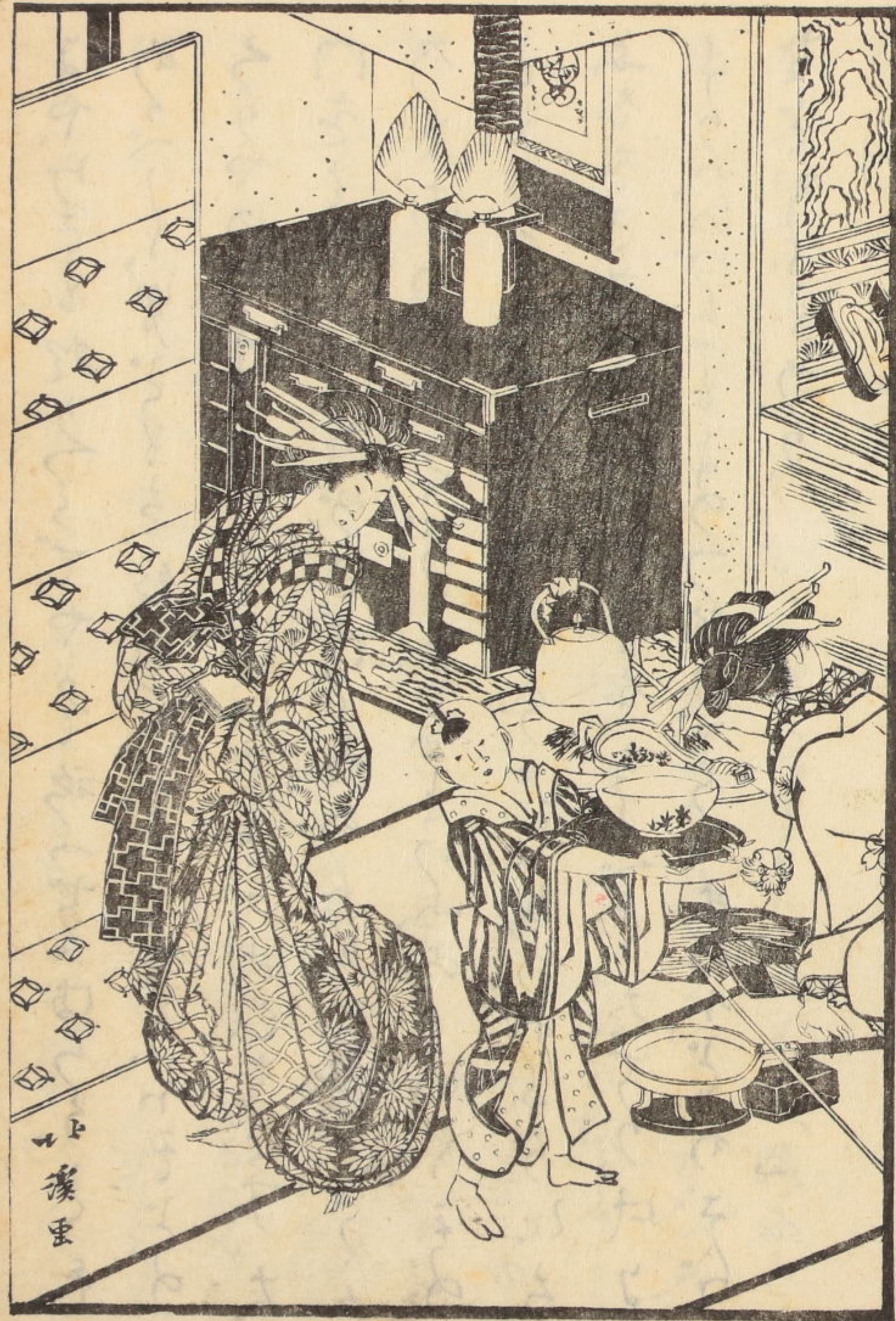


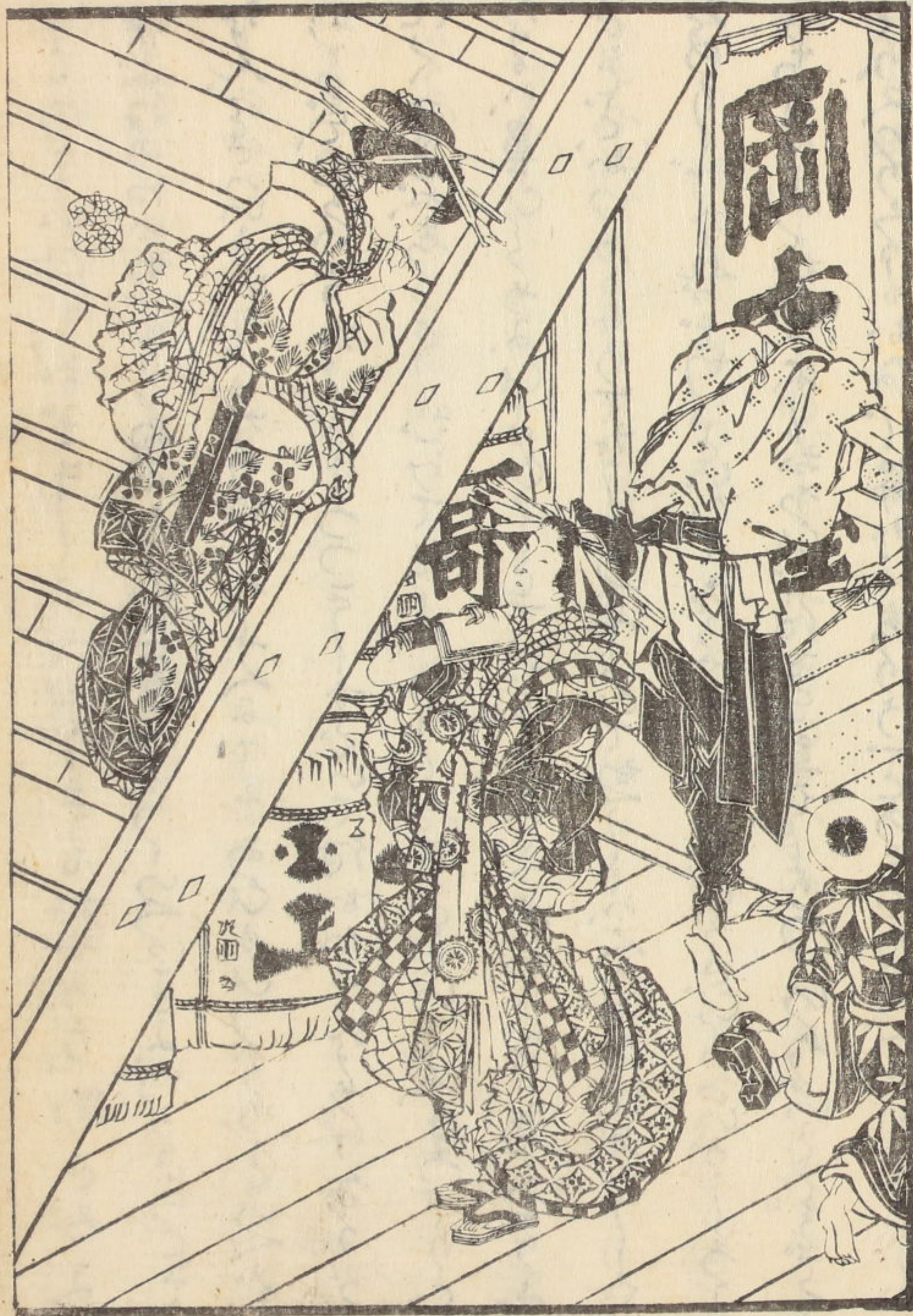
上
漢
島

Handwritten text in a cursive script, likely a form of Arabic or Persian, enclosed in a decorative rectangular border. The text is arranged in approximately 12 horizontal lines.

辰時

Handwritten text in a cursive script, likely a form of Arabic or Persian, located below the section header. The text is arranged in approximately 12 horizontal lines.

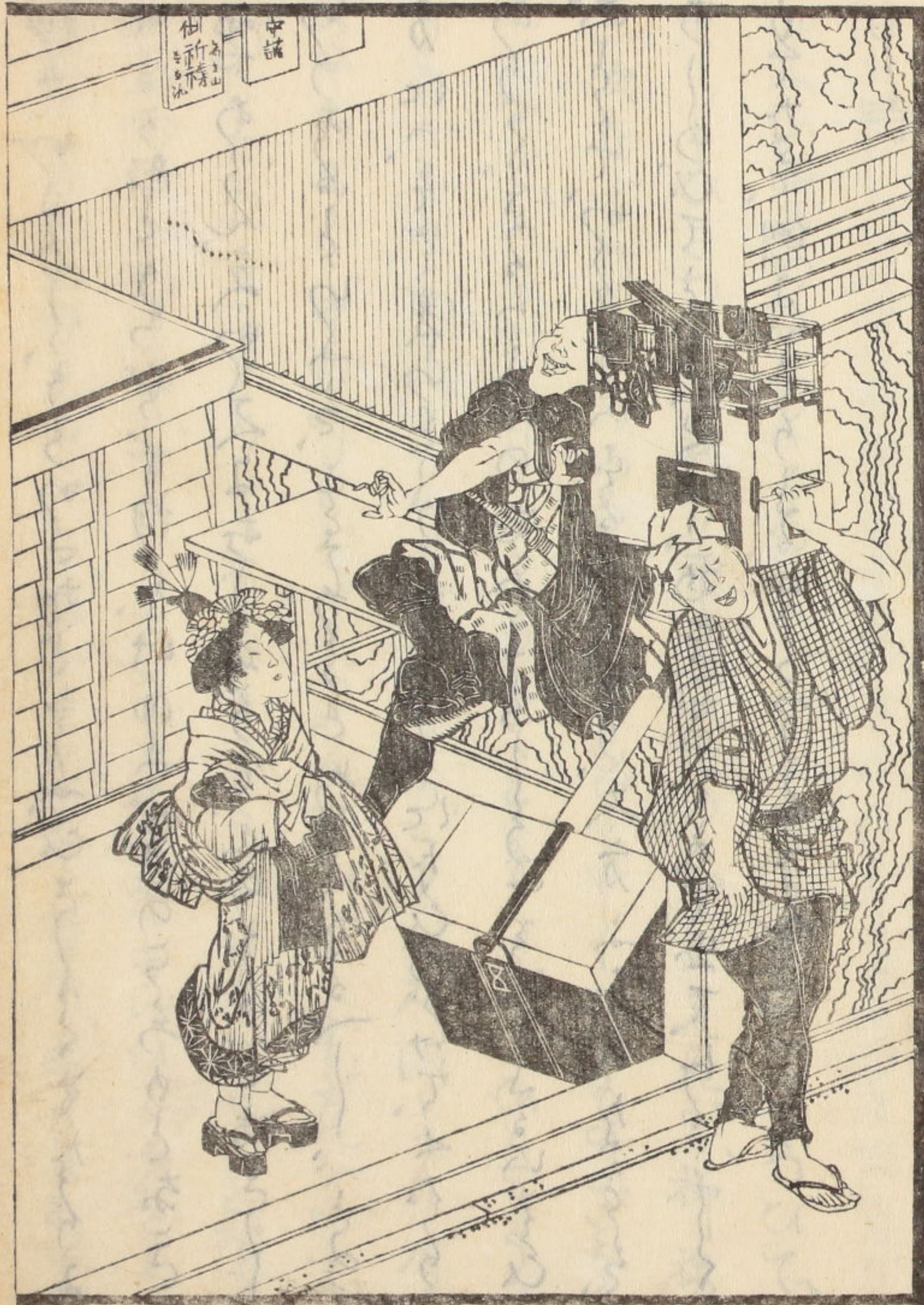




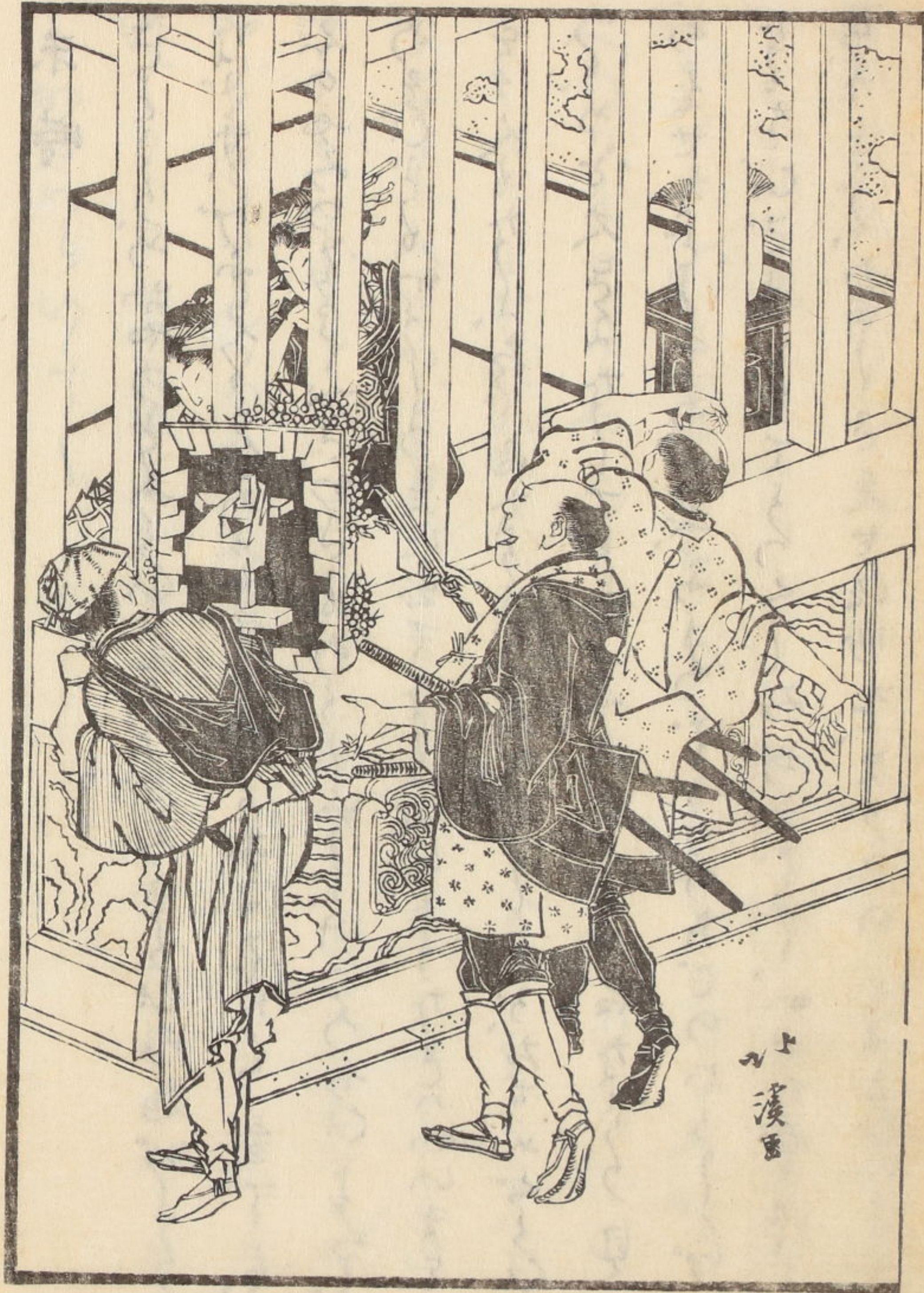
夕子所

上
漢
虫



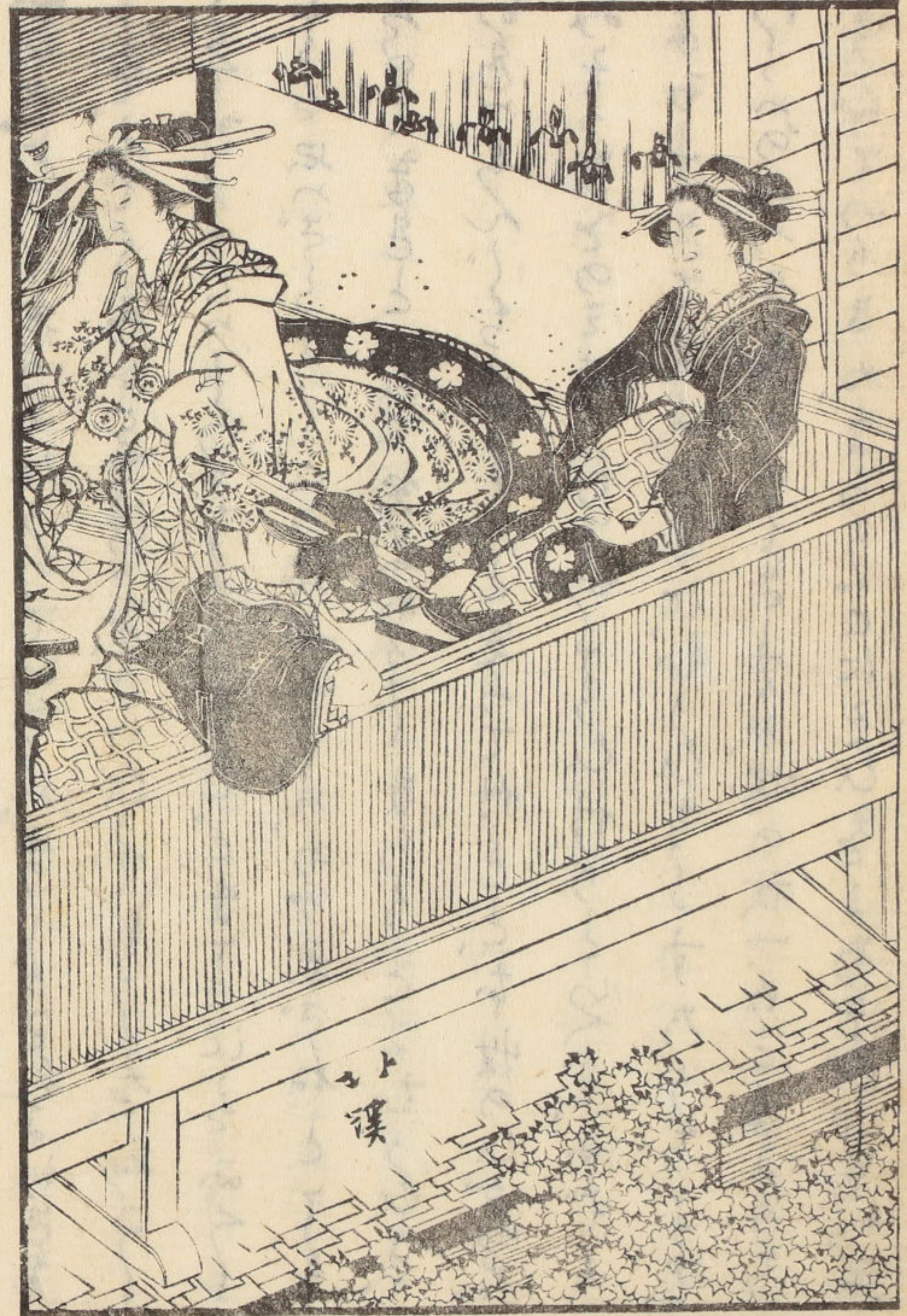
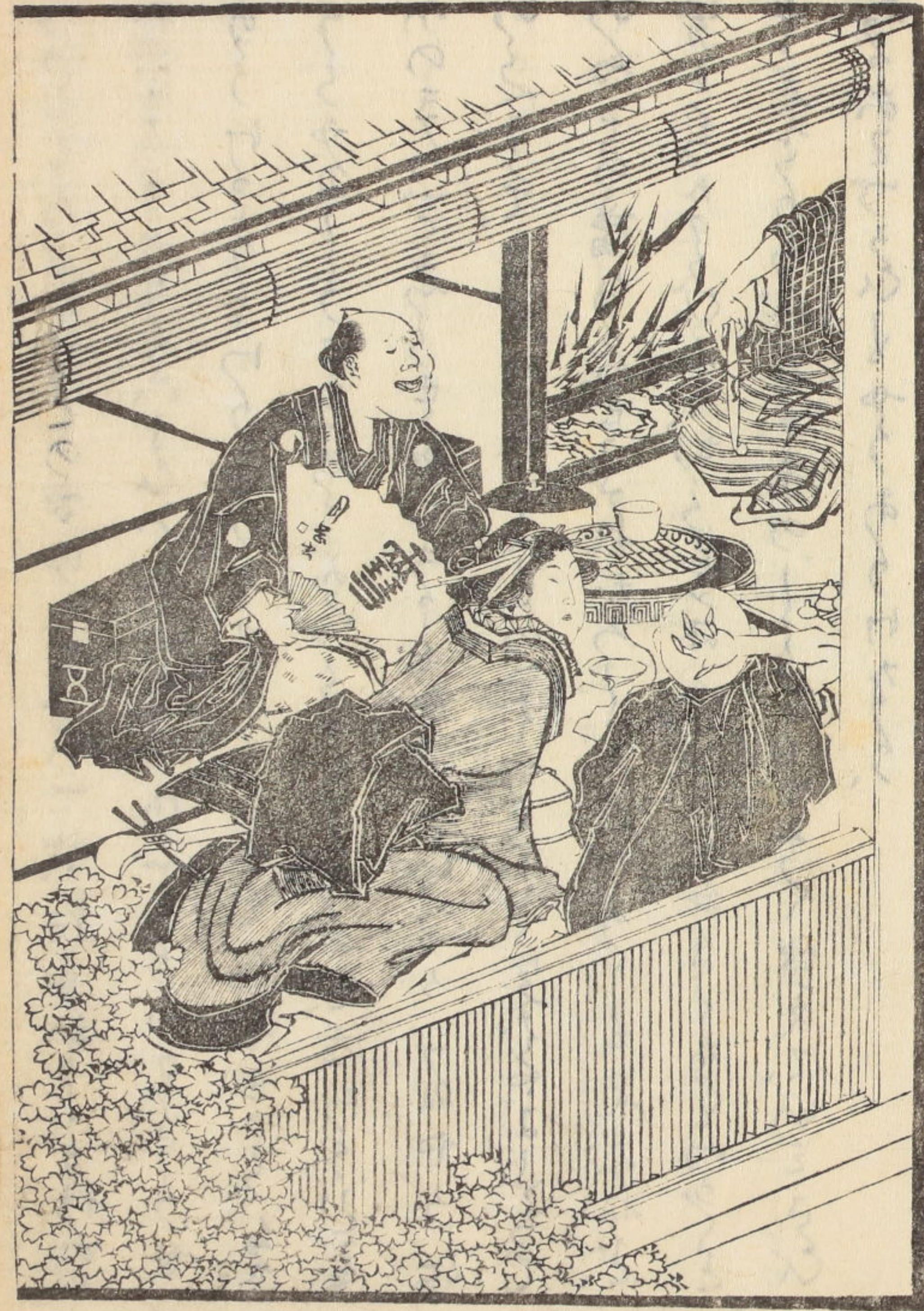


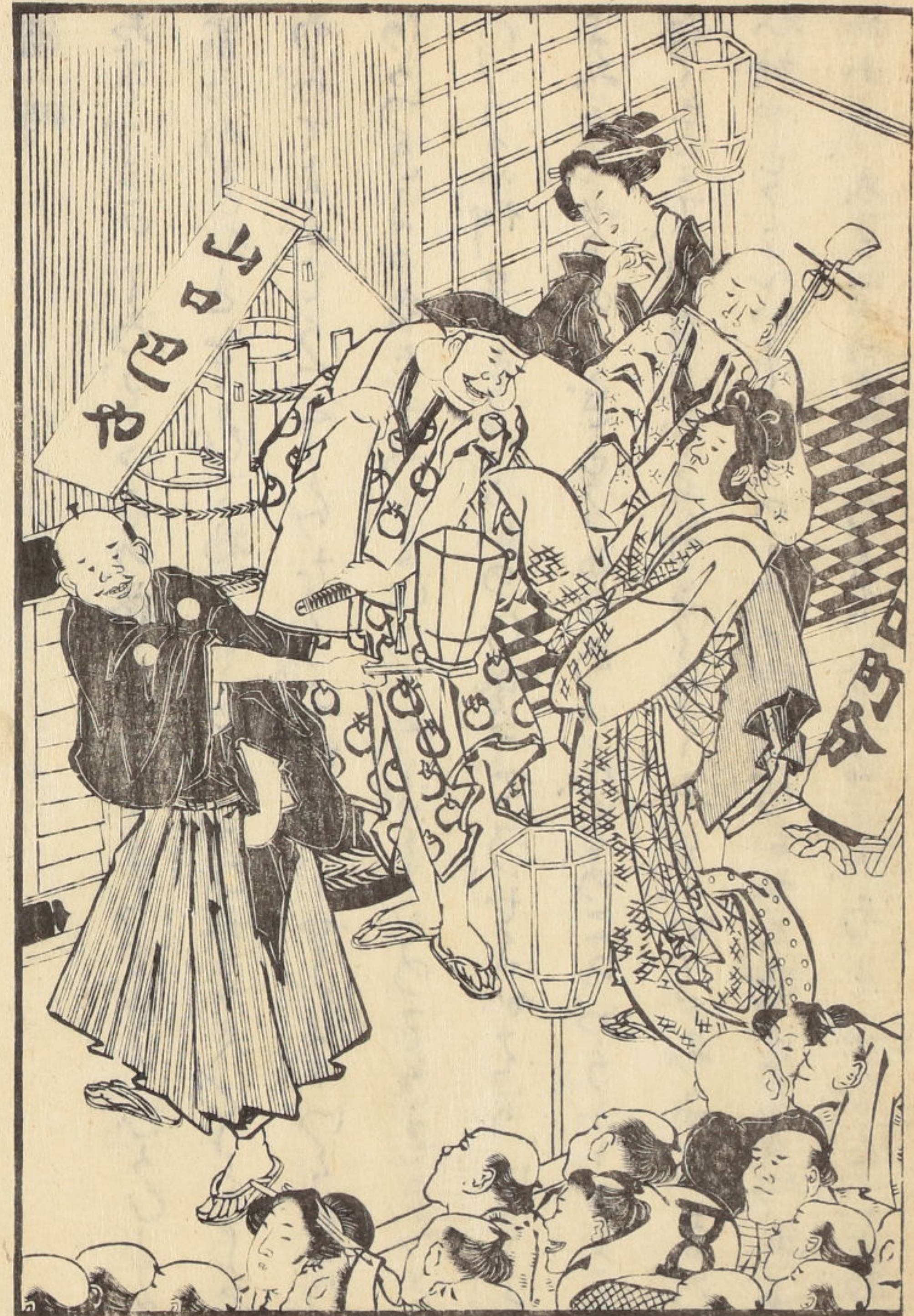
仙山
中議



上
漢

+











小
漢
里

