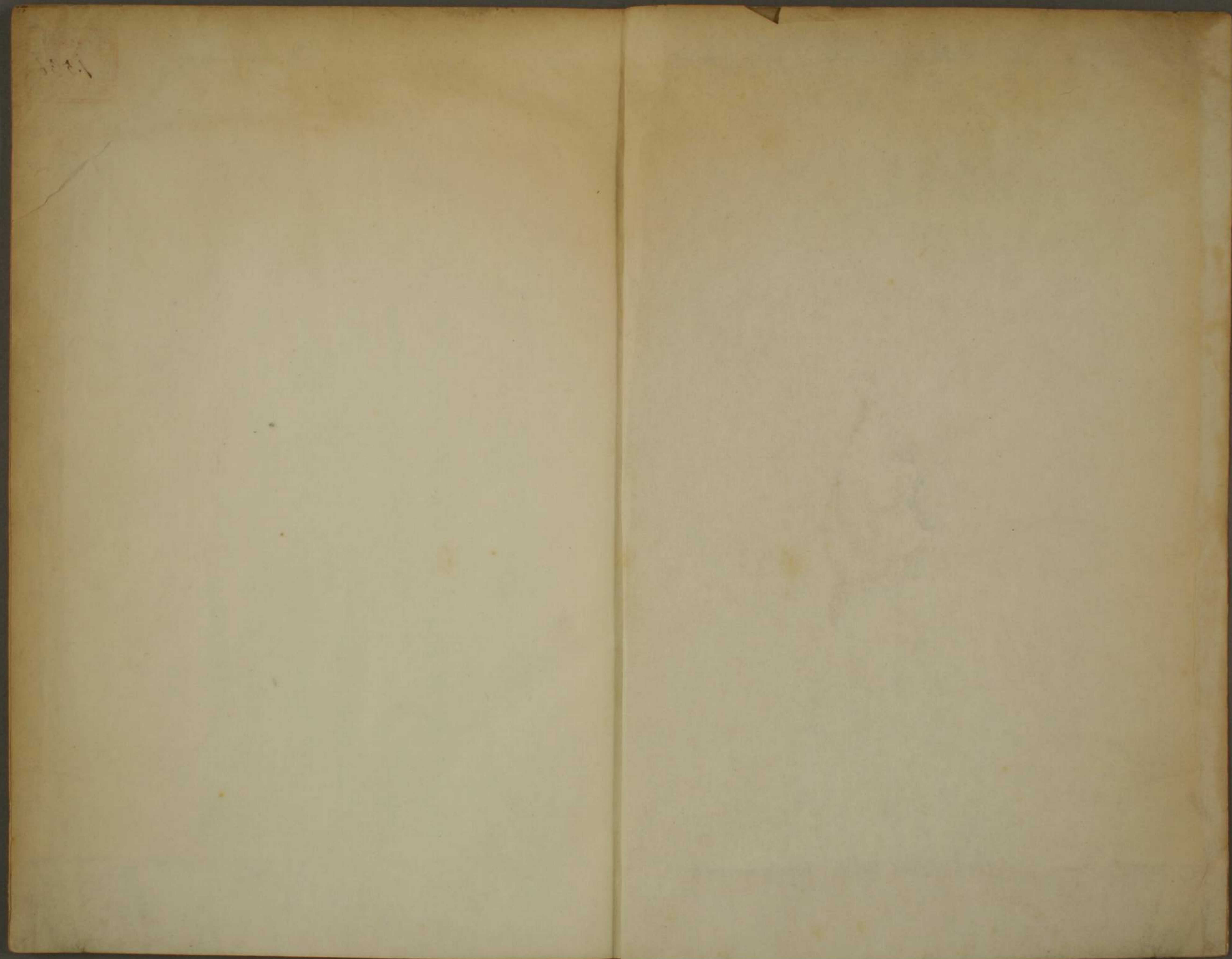


特別  
~8  
1536





~ 8

門へ連珠  
巻 1.536



Handwritten text in a cursive script, likely a historical or administrative document. The text is densely packed and covers most of the page.

Handwritten text in a cursive script, likely a historical or administrative document. The text is densely packed and covers most of the page.

Handwritten text in a cursive script, likely a historical or administrative document. The text is arranged in approximately 15 horizontal lines across the page.

Handwritten text in a cursive script, likely a historical or administrative document. The text is arranged in approximately 15 horizontal lines across the page.

Handwritten text in a cursive script, likely a historical or administrative document. The text is arranged in approximately 15 horizontal lines across the page.

Handwritten text in a cursive script, likely a historical or administrative document. The text is arranged in approximately 15 horizontal lines across the page.

Handwritten text in a cursive script, likely a historical document or manuscript. The text is arranged in approximately 15 horizontal lines across the page. The script is dense and characteristic of early modern European handwriting.

Handwritten text in a cursive script, likely a historical document or manuscript. The text is arranged in approximately 15 horizontal lines across the page. The script is dense and characteristic of early modern European handwriting.



Handwritten text in a cursive script, likely a historical or administrative document. The text is arranged in approximately 15 horizontal lines across the page.

Handwritten text in a cursive script, likely a historical or administrative document. The text is arranged in approximately 15 horizontal lines across the page.

Handwritten text in Arabic script, likely a religious or philosophical treatise. The text is densely packed and covers most of the page.

Handwritten text in Arabic script, likely a religious or philosophical treatise. The text is densely packed and covers most of the page.

Handwritten text in a cursive script, likely a historical document or manuscript. The text is arranged in approximately 15 horizontal lines across the page. The script is dense and characteristic of early modern European handwriting.

Handwritten text in a cursive script, likely a historical document or manuscript. The text is arranged in approximately 15 horizontal lines across the page. The script is dense and characteristic of early modern European handwriting.

Handwritten text in a cursive script, likely Arabic or Persian, filling the page.

Handwritten text in a cursive script, likely Arabic or Persian, filling the page.

Handwritten text in a cursive script, likely a historical document or manuscript. The text is arranged in a single column and appears to be a continuous passage of prose. The script is dense and characteristic of early modern European handwriting.

Handwritten text in a cursive script, likely a historical document or manuscript. The text is arranged in a single column and appears to be a continuous passage of prose. The script is dense and characteristic of early modern European handwriting.

Handwritten text in a cursive script, likely a historical or administrative document. The text is arranged in approximately 15 horizontal lines across the page. The script is dense and characteristic of early modern European cursive.

Handwritten text in a cursive script, likely a historical or administrative document. The text is arranged in approximately 15 horizontal lines across the page. The script is dense and characteristic of early modern European cursive.

Handwritten text in a cursive script, likely a historical document or manuscript. The text is arranged in a single column and appears to be a formal record or a list of entries. The script is dense and characteristic of early modern European handwriting.

Handwritten text in a cursive script, likely a historical document or manuscript. The text is arranged in a single column and appears to be a formal record or a list of entries. The script is dense and characteristic of early modern European handwriting.

Handwritten text in a cursive script, likely a historical or administrative document. The text is densely packed and spans the width of the page.

Handwritten text in a cursive script, likely a historical or administrative document. The text is densely packed and spans the width of the page.



Handwritten text in a cursive script, likely a historical document or manuscript. The text is arranged in approximately 15 horizontal lines. It contains various words and phrases, some of which are written in a larger, bolder hand, possibly indicating emphasis or specific terms. The script is dense and fills most of the page.

Handwritten text in a cursive script, likely a historical document or manuscript. The text is arranged in approximately 15 horizontal lines. It contains various words and phrases, some of which are written in a larger, bolder hand, possibly indicating emphasis or specific terms. The script is dense and fills most of the page.

Handwritten text in a cursive script, likely a historical document or manuscript, written on a single page of aged paper. The text is arranged in a single column and appears to be a continuous passage of prose. The script is dense and characteristic of early modern European handwriting. The page shows signs of age, including yellowing and some staining.

Handwritten text in a rectangular frame, likely bleed-through from the reverse side of the page. The text is written in a cursive style and is mostly illegible due to fading and bleed-through.

